

12TH EDITION

# Doing Business 2015

## Going Beyond Efficiency

### Economy Profile 2015

### Ecuador



COMPARING BUSINESS REGULATIONS FOR DOMESTIC FIRMS IN **189** ECONOMIES

*A World Bank Group Flagship Report*

© 2014 The International Bank for Reconstruction and Development /  
The World Bank  
1818 H Street NW, Washington, DC 20433  
Telephone: 202-473-1000; Internet: [www.worldbank.org](http://www.worldbank.org)

All rights reserved.  
1 2 3 4 17 16 15 14

This work is a product of the staff of The World Bank with external contributions. The findings, interpretations, and conclusions expressed in this work do not necessarily reflect the views of The World Bank, its Board of Executive Directors, or the governments they represent. The World Bank does not guarantee the accuracy of the data included in this work. The boundaries, colors, denominations, and other information shown on any map in this work do not imply any judgment on the part of The World Bank concerning the legal status of any territory or the endorsement or acceptance of such boundaries.

Nothing herein shall constitute or be considered to be a limitation upon or waiver of the privileges and immunities of The World Bank, all of which are specifically reserved.



This work is available under the Creative Commons Attribution 3.0 Unported license (CC BY 3.0) <http://creativecommons.org/licenses/by/3.0/igo>. Under the Creative Commons Attribution license, you are free to copy, distribute, transmit, and adapt this work,

including for commercial purposes, under the following conditions:

**Attribution**—Please cite the work as follows: World Bank. 2014. *Doing Business 2015: Going Beyond Efficiency*. Washington, DC: World Bank Group. DOI: 10.1596/978-1-4648-0351-2. License: Creative Commons Attribution CC BY 3.0 IGO

**Translations**—If you create a translation of this work, please add the following disclaimer along with the attribution: *This translation was not created by The World Bank and should not be considered an official World Bank translation. The World Bank shall not be liable for any content or error in this translation.*

**Adaptations**—If you create an adaptation of this work, please add the following disclaimer along with the attribution: *This is an adaptation of an original work by The World Bank. Views and opinions expressed in the adaptation are the sole responsibility of the author or authors of the adaptation and are not endorsed by The World Bank.*

**Third-party content**—The World Bank does not necessarily own each component of the content contained within the work. The World Bank therefore does not warrant that the use of any third-party-owned individual component or part contained in the work will not infringe on the rights of those third parties. The risk of claims resulting from such infringement rests solely with you. If you wish to re-use a component of the work, it is your responsibility to determine whether permission is needed for that re-use and to obtain permission from the copyright owner. Examples of components can include, but are not limited to, tables, figures or images.

All queries on rights and licenses should be addressed to the Publishing and Knowledge Division, The World Bank, 1818 H Street NW, Washington, DC 20433, USA; fax: 202-522-2625; e-mail: [pubrights@worldbank.org](mailto:pubrights@worldbank.org).

ISBN (paper): 978-1-4648-0351-2  
ISBN (electronic): 978-1-4648-0352-9  
DOI: 10.1596/978-1-4648-0351-2  
ISSN: 1729-2638

Cover design: Corporate Visions, Inc.

## CONTENTS

<b>Introduction</b> .....	<b>4</b>
<b>The business environment</b> .....	<b>6</b>
<b>Starting a business</b> .....	<b>16</b>
<b>Dealing with construction permits</b> .....	<b>25</b>
<b>Getting electricity</b> .....	<b>34</b>
<b>Registering property</b> .....	<b>42</b>
<b>Getting credit</b> .....	<b>50</b>
<b>Protecting minority investors</b> .....	<b>57</b>
<b>Paying taxes</b> .....	<b>66</b>
<b>Trading across borders</b> .....	<b>69</b>
<b>Enforcing contracts</b> .....	<b>74</b>
<b>Resolving insolvency</b> .....	<b>81</b>
<b>Labor market regulation</b> .....	<b>84</b>
<b>Distance to frontier and ease of doing business ranking</b> .....	<b>91</b>
<b>Resources on the <i>Doing Business</i> website</b> .....	<b>94</b>

## INTRODUCTION

*Doing Business* sheds light on how easy or difficult it is for a local entrepreneur to open and run a small to medium-size business when complying with relevant regulations. It measures and tracks changes in regulations affecting 11 areas in the life cycle of a business: starting a business, dealing with construction permits, getting electricity, registering property, getting credit, protecting minority investors, paying taxes, trading across borders, enforcing contracts, resolving insolvency and labor market regulation.

In a series of annual reports *Doing Business* presents quantitative indicators on business regulations and the protection of property rights that can be compared across 189 economies, from Afghanistan to Zimbabwe, over time. The data set covers 47 economies in Sub-Saharan Africa, 32 in Latin America and the Caribbean, 25 in East Asia and the Pacific, 26 in Eastern Europe and Central Asia, 20 in the Middle East and North Africa and 8 in South Asia, as well as 31 OECD high-income economies. The indicators are used to analyze economic outcomes and identify what reforms have worked, where and why.

This economy profile presents the *Doing Business* indicators for Ecuador. To allow useful comparison, it also provides data for other selected economies (comparator economies) for each indicator. The data in this report are current as of June

1, 2014 (except for the paying taxes indicators, which cover the period January–December 2013).

The *Doing Business* methodology has limitations. Other areas important to business—such as an economy's proximity to large markets, the quality of its infrastructure services (other than those related to trading across borders and getting electricity), the security of property from theft and looting, the transparency of government procurement, macroeconomic conditions or the underlying strength of institutions—are not directly studied by *Doing Business*. The indicators refer to a specific type of business, generally a local limited liability company operating in the largest business city. Because standard assumptions are used in the data collection, comparisons and benchmarks are valid across economies. The data not only highlight the extent of obstacles to doing business; they also help identify the source of those obstacles, supporting policy makers in designing regulatory reform.

More information is available in the full report. *Doing Business 2015* presents the indicators, analyzes their relationship with economic outcomes and presents business regulatory reforms. The data, along with information on ordering *Doing Business 2015*, are available on the *Doing Business* website at <http://www.doingbusiness.org>.

## CHANGES IN *DOING BUSINESS 2015*

As part of a 2-year update in methodology, *Doing Business 2015* incorporates 7 important changes. First, the ease of doing business ranking as well as all topic-level rankings are now computed on the basis of distance to frontier scores (see the chapter on the distance to frontier and ease of doing business ranking). Second, for the 11 economies with a population of more than 100 million, data for a second city have been added to the data set and the ranking calculation. These economies are Bangladesh, Brazil, China, India, Indonesia, Japan, Mexico, Nigeria, Pakistan, the Russian Federation and the United States. Third, for getting credit, the methodology has been revised for both the strength of legal rights index and the depth of credit information index. The number of points has been increased in both indices, from 10 to 12 for the strength of legal rights index and from 6 to 8 for the depth of credit information index. In addition, only credit bureaus and registries that cover at least 5% of the adult population can receive a score on the depth of credit information index.

Fourth, the name of the protecting investors indicator set has been changed to protecting minority investors to better reflect its scope—and the scope of the indicator set has been expanded to include shareholders' rights in corporate governance beyond related-party transactions. Fifth, the resolving insolvency indicator set has been expanded to include an index measuring the strength of the legal framework for insolvency. Sixth, the calculation of the distance to frontier score for paying taxes has been changed. The total tax rate component now enters the score in a nonlinear fashion, in an approach different from that used for all other indicators (see the chapter on the distance to frontier and ease of doing business ranking).

Finally, the name of the employing workers indicator set has been changed to labor market regulation, and the scope of this indicator set has also been changed. The indicators now focus on labor market regulation applying to the retail sector rather than the manufacturing sector, and their coverage has been expanded to include regulations on labor disputes and on benefits provided to workers. The labor market regulation indicators continue to be excluded from the aggregate distance to frontier score and ranking on the ease of doing business.

Beyond these changes there are 3 other updates in methodology. For paying taxes, the financial statement variables have been updated to be proportional to 2012 income per capita; previously they were proportional to 2005 income per capita. For enforcing contracts, the value of the claim is now set at twice the income per capita or \$5,000, whichever is greater. For dealing with construction permits, the cost of construction is now set at 50 times income per capita (before, the cost was assessed by the *Doing Business* respondents). In addition, this indicator set no longer includes the procedures for obtaining a landline telephone connection.

For more details on the changes, see the "What is changing in *Doing Business*?" chapter starting on page 24 of the *Doing Business 2015* report. For more details on the data and methodology, please see the "Data Notes" chapter starting on page 114 of the *Doing Business 2015* report. For more details on the distance to frontier metric, please see the "Distance to frontier and ease of doing business ranking" chapter in this profile.

## THE BUSINESS ENVIRONMENT

For policy makers trying to improve their economy's regulatory environment for business, a good place to start is to find out how it compares with the regulatory environment in other economies. *Doing Business* provides an aggregate ranking on the ease of doing business based on indicator sets that measure and benchmark regulations applying to domestic small to medium-size businesses through their life cycle. Economies are ranked from 1 to 189 by the ease of doing business ranking. This year's report presents results for 2 aggregate measures: the distance to frontier score and the ease of doing business ranking. The ranking of economies is determined by sorting the aggregate distance to frontier (DTF) scores. The distance to frontier score benchmarks economies with respect to regulatory practice, showing the absolute distance to the best performance in each *Doing Business* indicator. An economy's distance to frontier score is indicated on a scale from 0 to 100, where 0 represents the worst performance and 100 the frontier. (See the chapter on the distance to frontier and ease of doing business). The 10 topics included in the ranking in *Doing Business 2015*: starting a business, dealing with construction permits, getting electricity, registering property, getting credit, protecting minority investors, paying taxes, trading across borders, enforcing contracts and resolving insolvency. The labor market regulation indicators (formerly employing workers) are not included in this year's aggregate ease of doing business ranking, but the data are presented in this year's economy profile.

The aggregate ranking on the ease of doing business benchmarks each economy's performance on the indicators against that of all other economies in the *Doing Business* sample (figure 1.1). While this ranking tells much about the business environment in an economy, it does not tell the whole story. The ranking on the ease of doing business, and the underlying indicators, do not measure all aspects of the business environment that matter to firms and investors or that affect the competitiveness of the economy. Still, a high ranking does mean that the government has created a regulatory environment conducive to operating a business.

### ECONOMY OVERVIEW

Region: Latin America & Caribbean

Income category: Upper middle income

Population: 15,737,878

GNI per capita (US\$): 5,510

DB2015 rank: 115

DB2014 rank: 115\*

Change in rank: 0

DB 2015 DTF: 58.9

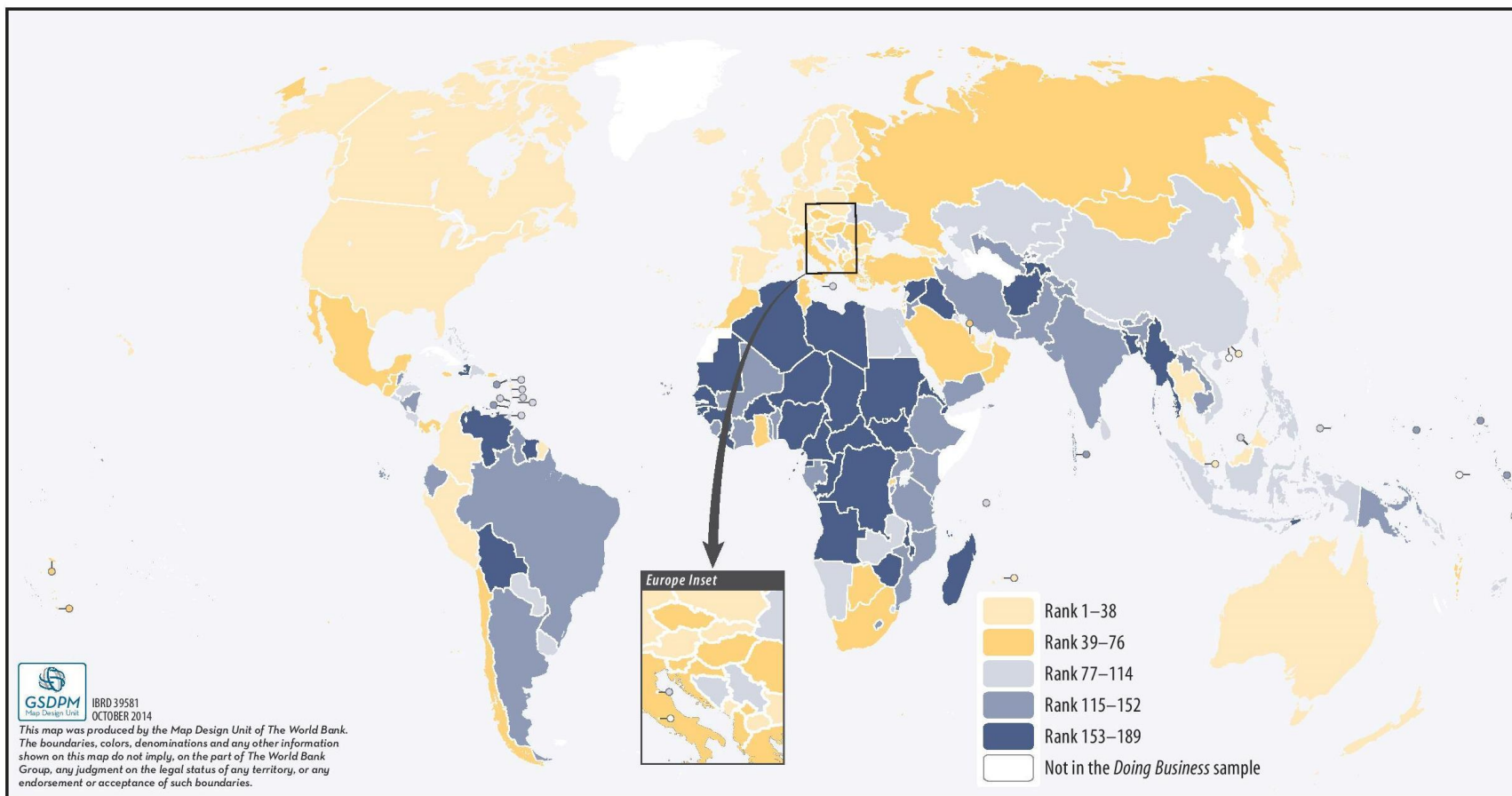
DB 2014 DTF: 58.3

Change in DTF: 0.6

\* DB2014 ranking shown is not last year's published ranking but a comparable ranking for DB2014 that captures the effects of such factors as data corrections and the changes in methodology. See the data notes starting on page 114 of the *Doing Business 2015* report for sources and definitions.

## THE BUSINESS ENVIRONMENT

Figure 1.1 Where economies stand in the global ranking on the ease of doing business



Source: *Doing Business* database.

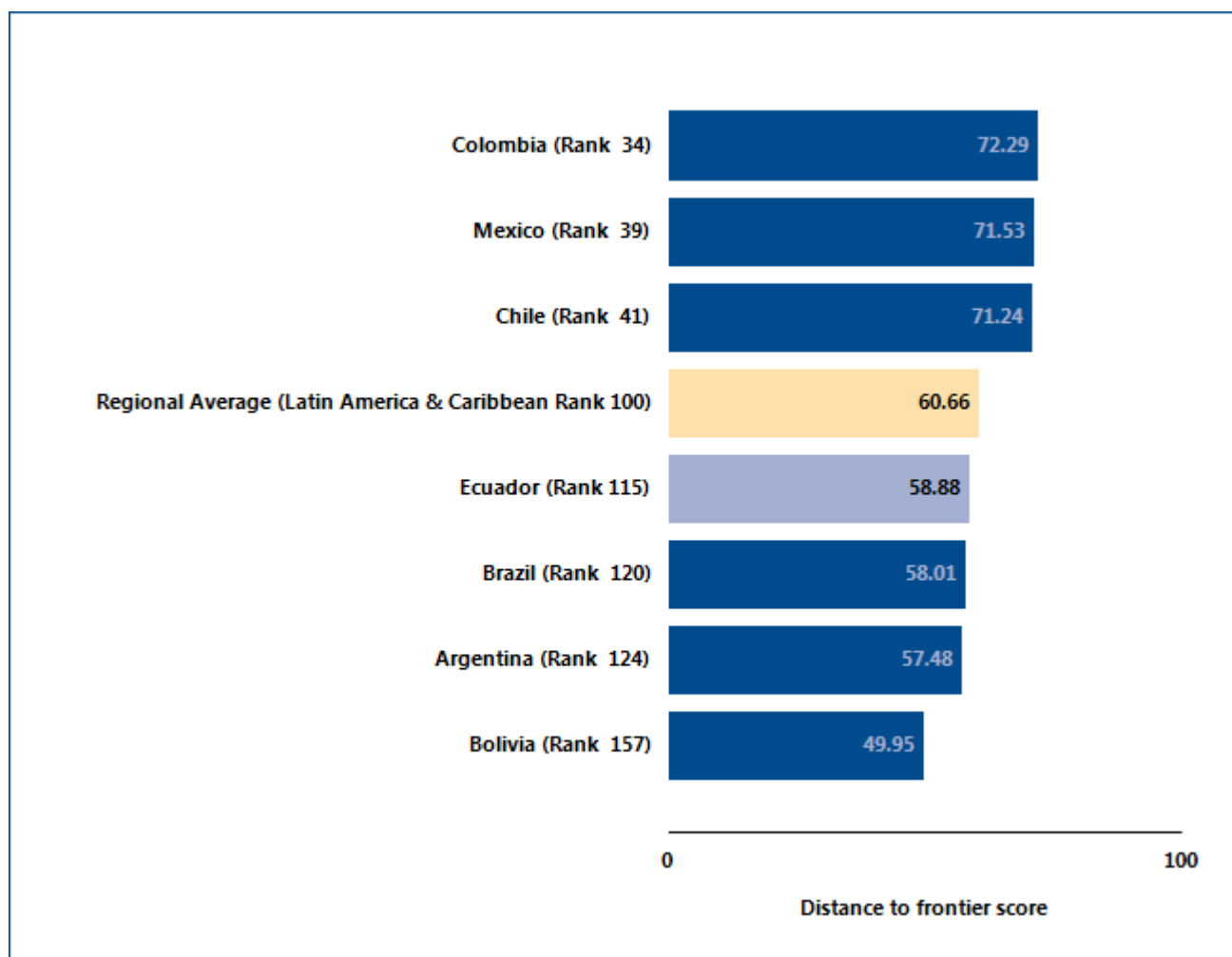


## THE BUSINESS ENVIRONMENT

For policy makers, knowing where their economy stands in the aggregate ranking on the ease of doing business is useful. Also useful is to know how it ranks relative to comparator economies and relative to the

regional average (figure 1.2). The economy's rankings (figure 1.3) and distance to frontier scores (figure 1.4) on the topics included in the ease of doing business ranking provide another perspective.

Figure 1.2 How Ecuador and comparator economies rank on the ease of doing business



Note: The rankings are benchmarked to June 2014 and based on the average of each economy's distance to frontier (DTF) scores for the 10 topics included in this year's aggregate ranking. The distance to frontier score benchmarks economies with respect to regulatory practice, showing the absolute distance to the best performance in each *Doing Business* indicator. An economy's distance to frontier score is indicated on a scale from 0 to 100, where 0 represents the worst performance and 100 the frontier. For the economies for which the data cover 2 cities, scores are a population-weighted average for the 2 cities.

Source: *Doing Business* database.



## THE BUSINESS ENVIRONMENT

Figure 1.3 Rankings on *Doing Business* topics - Ecuador  
 (Scale: Rank 189 center, Rank 1 outer edge)

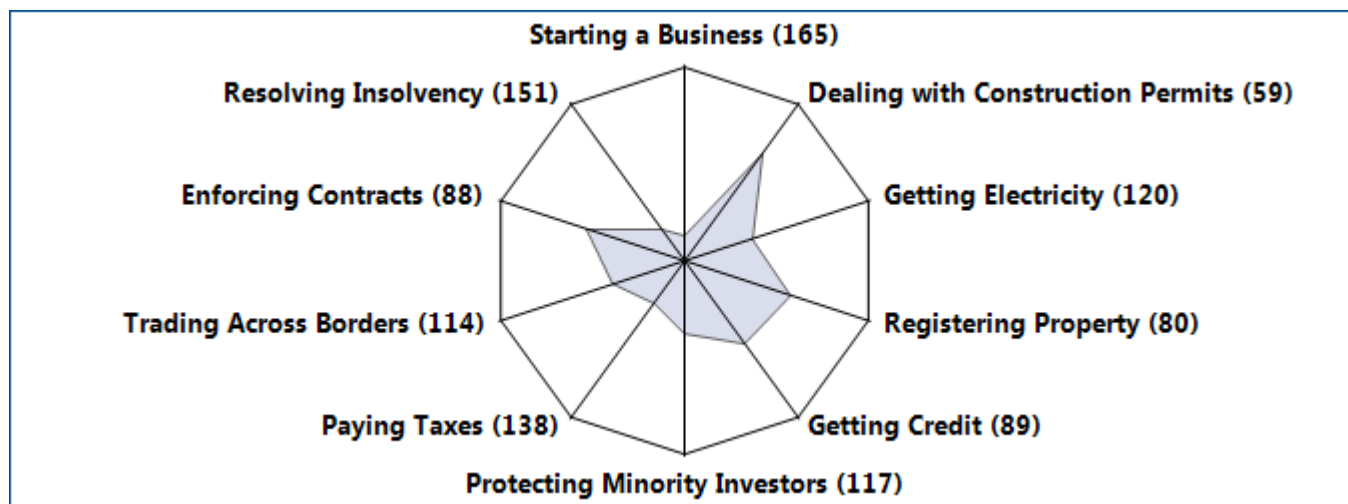
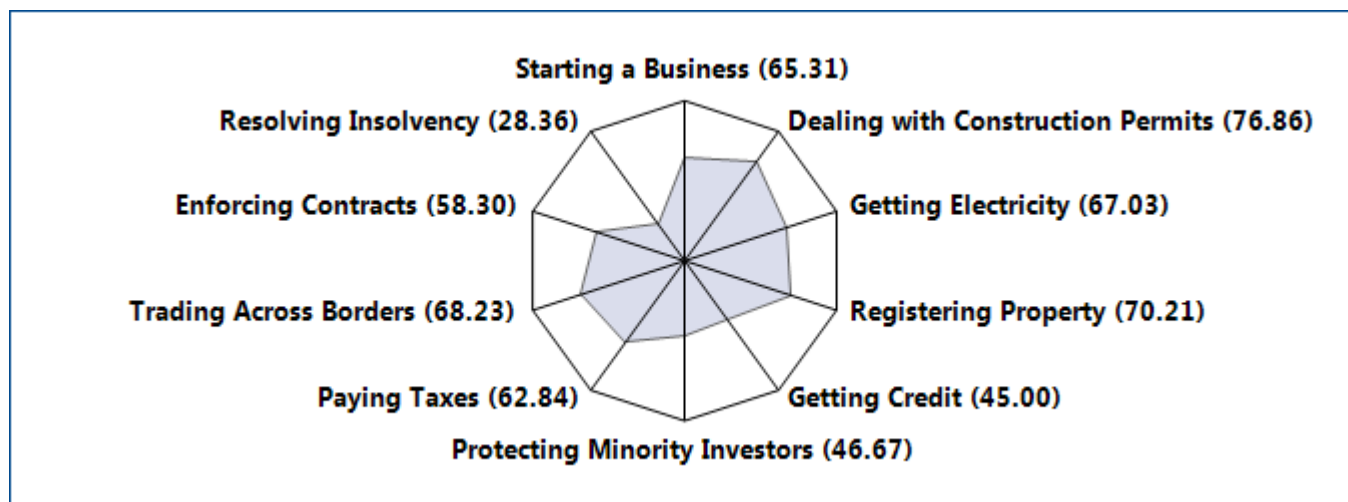


Figure 1.4 Distance to frontier scores on *Doing Business* topics - Ecuador  
 (Scale: Score 0 center, Score 100 outer edge)



*Note:* The rankings are benchmarked to June 2014 and based on the average of each economy’s distance to frontier (DTF) scores for the 10 topics included in this year’s aggregate ranking. The distance to frontier score benchmarks economies with respect to regulatory practice, showing the absolute distance to the best performance in each *Doing Business* indicator. An economy’s distance to frontier score is indicated on a scale from 0 to 100, where 0 represents the worst performance and 100 the frontier. For the economies for which the data cover 2 cities, scores are a population-weighted average for the 2 cities.  
*Source:* *Doing Business* database.

## THE BUSINESS ENVIRONMENT

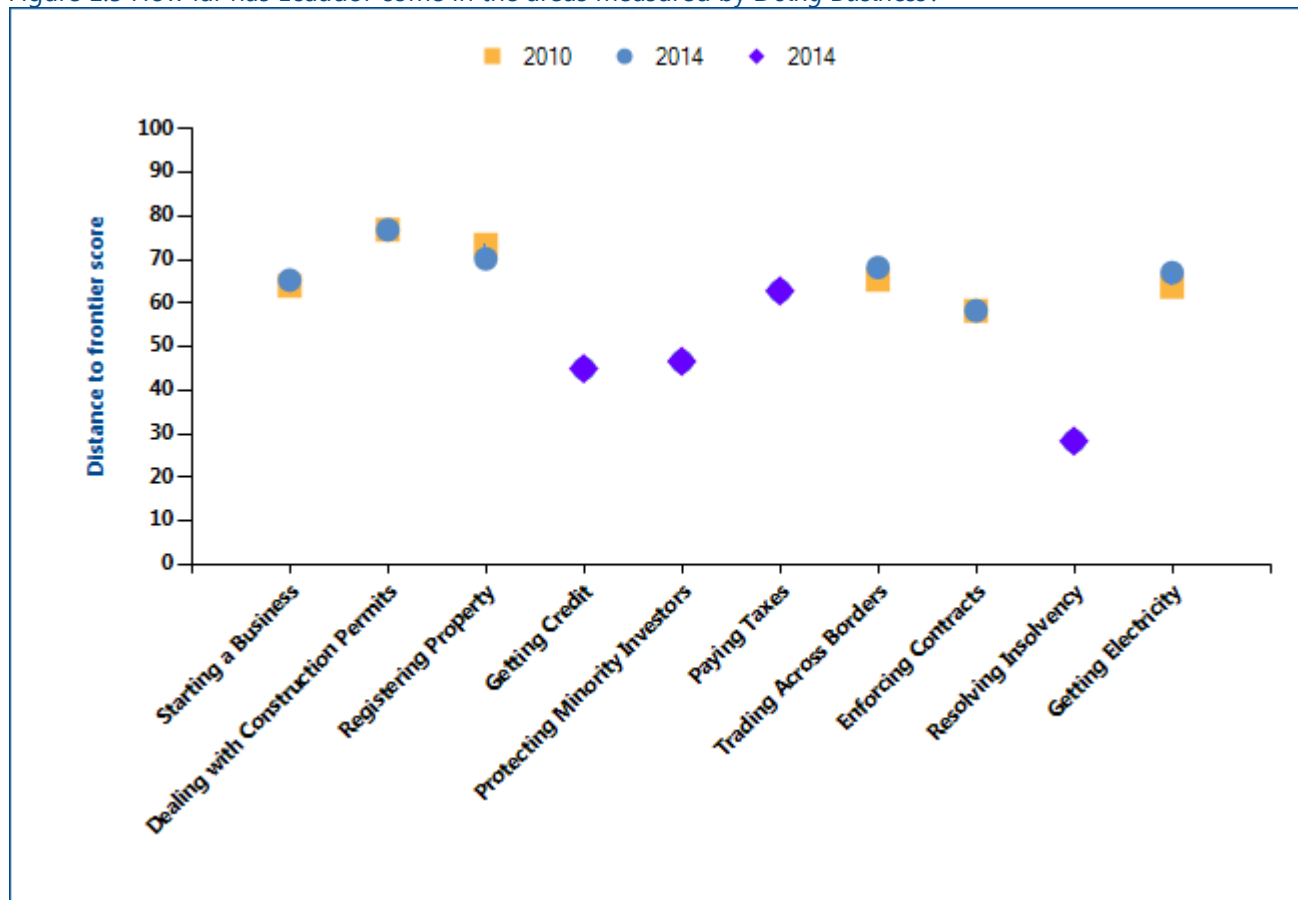
Just as the overall ranking on the ease of doing business tells only part of the story, so do changes in that ranking. Yearly movements in rankings can provide some indication of changes in an economy’s regulatory environment for firms, but they are always relative.

Moreover, year-to-year changes in the overall rankings do not reflect how the business regulatory environment in an economy has changed over time—or how it has changed in different areas. To aid in assessing such changes,

*Doing Business* introduced the distance to frontier score. This measure shows how far on average an economy is from the best performance achieved by any economy on each *Doing Business* indicator.

Comparing the measure for an economy at 2 points in time allows users to assess how much the economy’s regulatory environment as measured by *Doing Business* has changed over time—how far it has moved toward (or away from) the most efficient practices and strongest regulations in areas covered by *Doing Business* (figure 1.5).

Figure 1.5 How far has Ecuador come in the areas measured by *Doing Business*?



Note: The distance to frontier score shows how far on average an economy is from the best performance achieved by any economy on each *Doing Business* indicator since 2010, except for getting credit, paying taxes, protecting minority investors and resolving insolvency which had methodology changes in 2014 and thus are only comparable to 2013. The measure is normalized to range between 0 and 100, with 100 representing the best performance (the frontier). See the data notes starting on page 114 of the *Doing Business 2015* report for more details on the distance to frontier score.

Source: *Doing Business* database.

## THE BUSINESS ENVIRONMENT

The absolute values of the indicators tell another part of the story (table 1.1). The indicators, on their own or in comparison with the indicators of a good practice economy or those of comparator economies in the region, may reveal bottlenecks reflected in large numbers of procedures, long delays or high costs. Or they may reveal unexpected strengths in an area of business

regulation—such as a regulatory process that can be completed with a small number of procedures in a few days and at a low cost. Comparison of the economy's indicators today with those in the previous year may show where substantial bottlenecks persist—and where they are diminishing.

Table 1.1 Summary of *Doing Business* indicators for Ecuador

Indicator	Ecuador DB2015	Ecuador DB2014	Argentina DB2015	Bolivia DB2015	Brazil DB2015	Chile DB2015	Colombia DB2015	Mexico DB2015	Best performer globally DB2015
<b>Starting a Business (rank)</b>	165	157	146	171	167	59	84	67	New Zealand (1)
<b>Starting a Business (DTF Score)</b>	65.31	65.15	72.58	59.07	63.37	89.83	86.13	88.85	New Zealand (99.96)
<b>Procedures (number)</b>	13.0	13.0	14.0	15.0	11.6	7.0	8.0	6.0	New Zealand (1.0)*
<b>Time (days)</b>	55.5	55.5	25.0	49.0	83.6	5.5	11.0	6.3	New Zealand (0.5)
<b>Cost (% of income per capita)</b>	24.0	25.2	15.2	64.4	4.3	0.7	7.5	18.6	Slovenia (0.0)
<b>Paid-in min. capital (% of income per capita)</b>	3.5	3.7	4.0	1.6	0.0	0.0	0.0	0.0	112 Economies (0.0)*
<b>Dealing with Construction Permits (rank)</b>	59	59	181	129	174	62	61	108	Hong Kong SAR, China (1)
<b>Dealing with Construction Permits (DTF Score)</b>	76.86	76.82	42.54	64.97	48.31	76.13	76.45	68.43	Hong Kong SAR, China (95.53)

Indicator	Ecuador DB2015	Ecuador DB2014	Argentina DB2015	Bolivia DB2015	Brazil DB2015	Chile DB2015	Colombia DB2015	Mexico DB2015	Best performer globally DB2015
<b>Procedures (number)</b>	15.0	15.0	21.0	12.0	18.2	13.0	10.0	11.3	Hong Kong SAR, China (5.0)
<b>Time (days)</b>	114.0	114.0	341.0	275.0	426.1	152.0	73.0	87.6	Singapore (26.0)
<b>Cost (% of warehouse value)</b>	0.8	0.8	3.5	1.1	0.4	0.7	7.4	10.3	Qatar (0.0)*
<b>Getting Electricity (rank)</b>	120	116	104	127	19	49	92	116	Korea, Rep. (1)
<b>Getting Electricity (DTF Score)</b>	67.03	66.87	72.42	65.33	89.20	81.34	74.20	68.47	Korea, Rep. (99.83)
<b>Procedures (number)</b>	7.0	7.0	6.0	8.0	4.0	6.0	5.0	6.8	12 Economies (3.0)*
<b>Time (days)</b>	74.0	74.0	92.0	42.0	53.3	30.0	105.0	78.9	Korea, Rep. (18.0)*
<b>Cost (% of income per capita)</b>	638.5	677.7	45.4	829.3	31.6	62.1	504.4	346.1	Japan (0.0)
<b>Registering Property (rank)</b>	80	79	119	130	138	45	42	110	Georgia (1)
<b>Registering Property (DTF Score)</b>	70.21	70.16	60.63	58.55	56.18	78.96	79.33	62.45	Georgia (99.88)
<b>Procedures (number)</b>	8.0	8.0	7.0	7.0	13.6	6.0	6.0	6.8	4 Economies (1.0)*
<b>Time (days)</b>	39.0	39.0	51.5	91.0	31.7	28.5	16.0	63.6	3 Economies (1.0)*
<b>Cost (% of property value)</b>	1.9	2.0	6.6	4.7	2.5	1.2	2.0	5.1	4 Economies (0.0)*
<b>Getting Credit (rank)</b>	89	86	71	116	89	71	2	12	New Zealand (1)
<b>Getting Credit (DTF Score)</b>	45.00	45.00	50.00	35.00	45.00	50.00	95.00	80.00	New Zealand (100)
<b>Strength of legal rights index (0-12)</b>	1	1	2	0	2	4	12	8	3 Economies (12)*

Indicator	Ecuador DB2015	Ecuador DB2014	Argentina DB2015	Bolivia DB2015	Brazil DB2015	Chile DB2015	Colombia DB2015	Mexico DB2015	Best performer globally DB2015
Depth of credit information index (0-8)	8	8	8	7	7	6	7	8	23 Economies (8)*
Credit registry coverage (% of adults)	0.0	0.0	41.2	15.1	52.5	44.7	0.0	0.0	Portugal (100.0)
Credit bureau coverage (% of adults)	73.0	70.9	100.0	39.0	63.6	8.8	87.0	100.0	23 Economies (100.0)*
Protecting Minority Investors (rank)	117	136	62	160	35	56	10	62	New Zealand (1)
Protecting Minority Investors (DTF Score)	46.67	42.50	57.50	40.83	62.50	58.33	71.67	57.50	New Zealand (81.67)
Extent of conflict of interest regulation index (0-10)	4.3	4.0	5.0	4.0	5.7	6.7	8.0	6.0	Singapore (9.3)*
Extent of shareholder governance index (0-10)	5.0	4.5	6.5	4.2	6.8	5.0	6.3	5.5	France (7.8)*
Strength of minority investor protection index (0-10)	4.7	4.3	5.8	4.1	6.3	5.8	7.2	5.8	New Zealand (8.2)
Paying Taxes (rank)	138	133	170	189	177	29	146	105	United Arab Emirates (1)*
Paying Taxes (DTF Score)	62.84	62.50	44.99	12.18	41.31	84.50	59.71	71.17	United Arab Emirates (99.44)*
Payments (number per year)	8.0	8.0	9.0	42.0	9.0	7.0	11.0	6.0	Hong Kong SAR, China (3.0)*
Time (hours per year)	654.0	654.0	405.0	1,025.0	2,600.0	291.0	239.0	334.0	Luxembourg (55.0)
Trading Across Borders (rank)	114	116	128	125	123	40	93	44	Singapore (1)
Trading Across Borders	68.23	67.31	65.11	65.79	66.11	82.05	72.69	81.26	Singapore (96.47)

Indicator	Ecuador DB2015	Ecuador DB2014	Argentina DB2015	Bolivia DB2015	Brazil DB2015	Chile DB2015	Colombia DB2015	Mexico DB2015	Best performer globally DB2015
(DTF Score)									
Documents to export (number)	7	7	6	7	6	5	4	4	Ireland (2)*
Time to export (days)	19.0	20.0	12.0	22.0	13.4	15.0	14.0	12.0	5 Economies (6.0)*
Cost to export (US\$ per container)	1,535.0	1,535.0	1,770.0	1,440.0	2,322.8	910.0	2,355.0	1,499.3	Timor-Leste (410.0)
Cost to export (deflated US\$ per container)	1,535.0	1,581.0	1,770.0	1,440.0	2,322.8	910.0	2,355.0	1,499.3	
Documents to import (number)	6	6	8	6	8	5	6	4	Ireland (2)*
Time to import (days)	24.0	25.0	30.0	28.0	17.0	12.0	13.0	11.2	Singapore (4.0)
Cost to import (US\$ per container)	1,520.0	1,520.0	2,320.0	1,745.0	2,322.8	860.0	2,470.0	1,887.6	Singapore (440.0)
Cost to import (deflated US\$ per container)	1,520.0	1,565.6	2,320.0	1,745.0	2,322.8	860.0	2,470.0	1,887.6	
Enforcing Contracts (rank)	88	88	63	111	118	64	168	57	Singapore (1)
Enforcing Contracts (DTF Score)	58.30	58.30	63.88	54.93	53.60	63.85	37.66	64.61	Singapore (89.54)
Time (days)	588.0	588.0	590.0	591.0	731.0	480.0	1,288.0	388.9	Singapore (150.0)
Cost (% of claim)	27.2	27.2	20.5	33.2	16.5	28.6	47.9	30.9	Iceland (9.0)
Procedures (number)	39.0	39.0	36.0	40.0	43.6	36.0	33.0	36.8	Singapore (21.0)*
Resolving Insolvency (rank)	151	150	83	96	55	73	30	27	Finland (1)
Resolving Insolvency (DTF Score)	28.36	28.37	45.10	42.82	54.52	47.38	70.00	72.59	Finland (93.85)

Indicator	Ecuador DB2015	Ecuador DB2014	Argentina DB2015	Bolivia DB2015	Brazil DB2015	Chile DB2015	Colombia DB2015	Mexico DB2015	Best performer globally DB2015
<b>Time (years)</b>	5.3		2.8	1.8	4.0	3.2	1.7	1.8	Ireland (0.4)
<b>Cost (% of estate)</b>	18.0	18.0	12.0	14.5	12.0	14.5	6.0	18.0	Norway (1.0)
<b>Outcome (0 as piecemeal sale and 1 as going concern)</b>	0	0	0	0	1	0	1	1	
<b>Recovery rate (cents on the dollar)</b>	17.9	17.9	28.6	38.9	25.8	30.0	72.0	68.1	Japan (92.9)
<b>Strength of insolvency framework index (0-16)</b>	6.0	6.0	9.5	7.0	13.0	10.0	10.0	11.5	5 Economies (15.0)*

Note: DB2014 rankings shown are not last year's published rankings but comparable rankings for DB2014 that capture the effects of such factors as data corrections and changes to the methodology. Trading across borders deflated and non-deflated values are identical in DB2015 because it is defined as the base year for the deflator. The best performer on time for paying taxes is defined as the lowest time recorded among all economies in the DB2015 sample that levy the 3 major taxes: profit tax, labor taxes and mandatory contributions, and VAT or sales tax. If an economy has no laws or regulations covering a specific area—for example, insolvency—it receives a “no practice” mark. Similarly, an economy receives a “no practice” or “not possible” mark if regulation exists but is never used in practice or if a competing regulation prohibits such practice. Either way, a “no practice” mark puts the economy at the bottom of the ranking on the relevant indicator.

\* Two or more economies share the top ranking on this indicator. A number shown in place of an economy's name indicates the number of economies that share the top ranking on the indicator. For a list of these economies, see the *Doing Business* website (<http://www.doingbusiness.org>).

Source: *Doing Business* database.



## STARTING A BUSINESS

Formal registration of companies has many immediate benefits for the companies and for business owners and employees. Legal entities can outlive their founders. Resources are pooled as several shareholders join forces to start a company. Formally registered companies have access to services and institutions from courts to banks as well as to new markets. And their employees can benefit from protections provided by the law. An additional benefit comes with limited liability companies. These limit the financial liability of company owners to their investments, so personal assets of the owners are not put at risk. Where governments make registration easy, more entrepreneurs start businesses in the formal sector, creating more good jobs and generating more revenue for the government.

### What do the indicators cover?

*Doing Business* measures the ease of starting a business in an economy by recording all procedures officially required or commonly done in practice by an entrepreneur to start up and formally operate an industrial or commercial business—as well as the time and cost required to complete these procedures. It also records the paid-in minimum capital that companies must deposit before registration (or within 3 months). The ranking of economies on the ease of starting a business is determined by sorting their distance to frontier scores for starting a business. These scores are the simple average of the distance to frontier scores for each of the component indicators.

To make the data comparable across economies, *Doing Business* uses several assumptions about the business and the procedures. It assumes that all information is readily available to the entrepreneur and that there has been no prior contact with officials. It also assumes that the entrepreneur will pay no bribes. And it assumes that the business:

- Is a limited liability company, located in the largest business city and is 100% domestically owned<sup>1</sup>.
- Has between 10 and 50 employees.
- Conducts general commercial or industrial activities.
- Has a start-up capital of 10 times income per capita.
- Has a turnover of at least 100 times income per capita.
- Does not qualify for any special benefits.
- Does not own real estate.

### WHAT THE STARTING A BUSINESS

#### INDICATORS MEASURE

#### Procedures to legally start and operate a company (number)

- Preregistration (for example, name verification or reservation, notarization)
- Registration in the economy's largest business city<sup>1</sup>
- Postregistration (for example, social security registration, company seal)

#### Time required to complete each procedure (calendar days)

- Does not include time spent gathering information
- Each procedure starts on a separate day (2 procedures cannot start on the same day). Procedures that can be fully completed online are recorded as ½ day.
- Procedure completed once final document is received
- No prior contact with officials

#### Cost required to complete each procedure (% of income per capita)

- Official costs only, no bribes
- No professional fees unless services required by law

#### Paid-in minimum capital (% of income per capita)

- Deposited in a bank or with a notary before registration (or within 3 months)

<sup>1</sup> For the 11 economies with a population of more than 100 million, data for a second city have been added.

## STARTING A BUSINESS

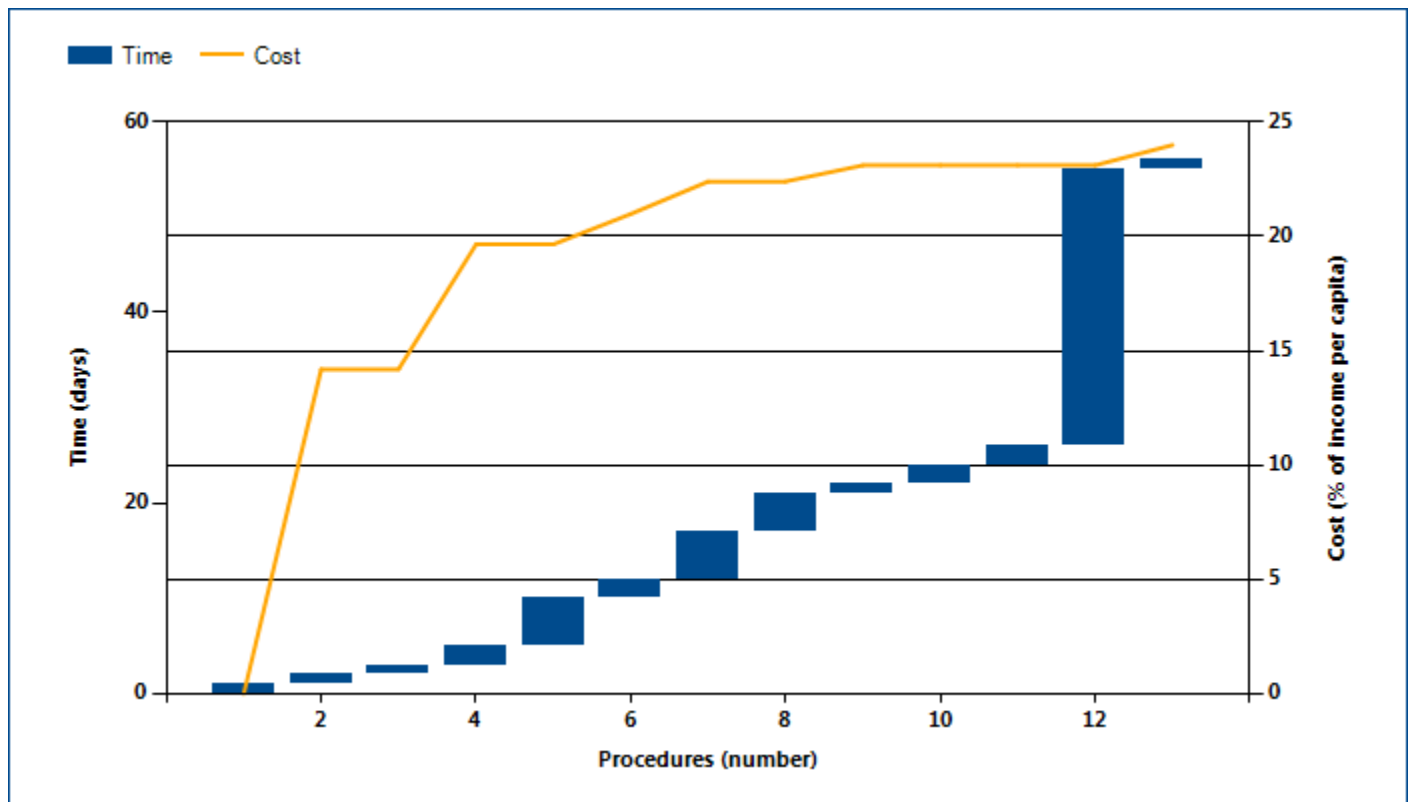
### Where does the economy stand today?

What does it take to start a business in Ecuador? According to data collected by *Doing Business*, starting a business there requires 13.0 procedures, takes 55.5 days, costs 24.0% of income per capita and requires paid-in minimum capital of 3.5% of income per capita (figure 2.1). Most indicator sets refer to a case scenario in the

largest business city of an economy, except for 11 economies for which the data are a population-weighted average of the 2 largest business cities. See the chapter on distance to frontier and ease of doing business ranking at the end of this profile for more details.

Figure 2.1 What it takes to start a business in Ecuador -

Paid-in minimum capital (% of income per capita): 3.5



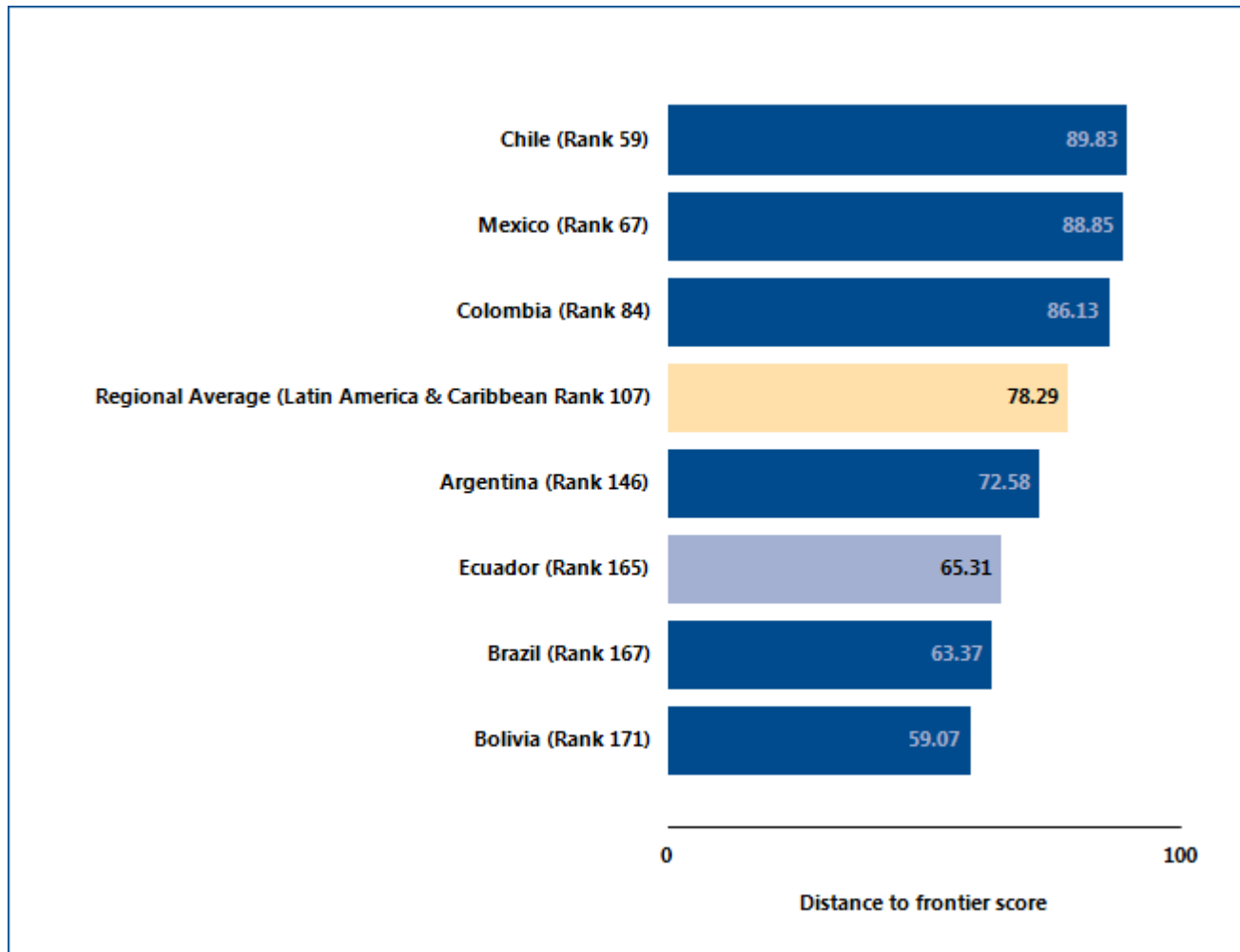
Note: Time shown in the figure above may not reflect simultaneity of procedures. Online procedures account for 0.5 days in the total time calculation. For more information on the methodology of the starting a business indicators, see the *Doing Business* website (<http://www.doingbusiness.org>). For details on the procedures reflected here, see the summary at the end of this chapter. Source: *Doing Business* database.

### STARTING A BUSINESS

Globally, Ecuador stands at 165 in the ranking of 189 economies on the ease of starting a business (figure 2.2). The rankings for comparator economies and the regional

average ranking provide other useful information for assessing how easy it is for an entrepreneur in Ecuador to start a business.

Figure 2.2 How Ecuador and comparator economies rank on the ease of starting a business



Source: Doing Business database.

## STARTING A BUSINESS

Economies around the world have taken steps making it easier to start a business—streamlining procedures by setting up a one-stop shop, making procedures simpler or faster by introducing technology and reducing or eliminating minimum capital requirements. Many have undertaken business registration reforms in stages—and

they often are part of a larger regulatory reform program. Among the benefits have been greater firm satisfaction and savings and more registered businesses, financial resources and job opportunities.

What business registration reforms has *Doing Business* recorded in Ecuador (table 2.1)?

Table 2.1 How has Ecuador made starting a business easier—or not?  
By *Doing Business* report year from DB2010 to DB2015

DB year	Reform
<b>DB2011</b>	Ecuador made starting a business easier by introducing an online registration system for social security.

Note: For information on reforms in earlier years (back to DB2005), see the *Doing Business* reports for these years, available at <http://www.doingbusiness.org>.

Source: *Doing Business* database.

## STARTING A BUSINESS

### What are the details?

Underlying the indicators shown in this chapter for Ecuador is a set of specific procedures—the bureaucratic and legal steps that an entrepreneur must complete to incorporate and register a new firm. These are identified by *Doing Business* through collaboration with relevant local professionals and the study of laws, regulations and publicly available information on business entry in that economy. Following is a detailed summary of those procedures, along with the associated time and cost. These procedures are those that apply to a company matching the standard assumptions (the “standardized company”) used by *Doing Business* in collecting the data (see the section in this chapter on what the indicators measure).

#### STANDARDIZED COMPANY

**Legal form:** Compañía Limitada

**Paid in minimum capital requirement:** USD 200

**City:** Quito

**Start-up Capital:** 10 times GNI per capita

Table 2.2 Summary of time, cost and procedures for starting a business in Ecuador -

No.	Procedure	Time to complete	Cost to complete
1	<p><b>Reservation of the company name at the Superintendent of Companies</b></p> <p>The certificate of reservation is valid for 30 days according the Resolution No. 06-Q-IJ-002 dated on 24-07-2006 issued by the Superintendence of Companies.</p> <p><i>Agency: Superintendence of Companies (National Ecuadorian Office of Companies)</i></p>	Less than one day (online procedure)	no charge
2	<p><b>Hire a lawyer to prepare the minutes of incorporation</b></p> <p>The minutes include the constituting contract, the articles of incorporation, the company's bylaws, and the formation of capital. A lawyer must prepare and sign the minutes for the company's incorporation. Moreover, a notary public must notarize these documents; the lawyer cannot do so. The cost includes all the operating expenses and legal fees.</p> <p><i>Agency: Lawyer</i></p>	1 day	USD 800-1,000
3	<p><b>Deposit 50% of paid-in minimum capital in a special account of “completion of capital” (Integración de Capital) in the name of the company being formed</b></p> <p>The entrepreneurs need to deposit 50% of the minimum capital</p>	1 day	no charge

No.	Procedure	Time to complete	Cost to complete
	<p>requirement into a bank account in the company's name. Proof of the approved name is required.</p> <p><i>Agency: Bank</i></p>		
4	<p><b>Notarize the charter of incorporation and bylaws</b></p> <p>The entrepreneurs need to notarize the charter of incorporation and the bylaws with a notary public.</p> <p>According to the Regulation Number 073-2012 issued by the National Judicial Council (Consejo Nacional de la Judicatura) published in the Official Gazette on July 2, 2012, the notarization cost of the charter of incorporation and bylaws is given according the paid-in minimum capital of the company.</p> <p><i>Agency: Notary</i></p>	2 days	USD 245 for the first USD 25,000 of the start up capital + 0.2% of capital for notary fees for the rest of the start up capital
5	<p><b>The lawyer presents the documents (attached with three certified copies of the charter and the bylaws) to the Superintendent of Companies for the approval of the company's incorporation</b></p> <p>The registration fee is paid annually to the Superintendent of Companies. The cost of contribution is 1% of total assets.</p> <p>The Superintendent of Companies cut the time for processing company applications, by eliminating internal processes, increasing staff, and upgrading the computer system. The company founders can now verify the status of the registration procedure online.</p> <p><i>Agency: Superintendence of Companies.</i></p>	5 days	no charge
6	<p><b>Publish an abstract of the charter in a daily newspaper that circulates in the area in which the company operates</b></p> <p>The company needs to publish its incorporation in a daily newspaper located where the company will operate.</p> <p><i>Agency: Daily Newspaper</i></p>	2 days	USD 75
7	<p><b>Inscribe the company's charter and resolutions, as well as the name of the company's legal representatives in the Mercantile Registry Office</b></p> <p>After inscribing the charter and resolution, as well as the name of the legal representatives, the Mercantile Registry office ("Registro Mercantil") will provide a registration number "Numero de codigo", with the date that the company started its legal existence.</p>	5 days	USD 80

No.	Procedure	Time to complete	Cost to complete
	<p><i>Agency: Mercantile Registry</i></p>		
<p><b>8</b></p>	<p><b>Apply for the Registro Unico de Contribuyentes (RUC)</b></p> <p>The Registro Unico de Contribuyentes (RUC) must be obtained: (a) once the constitution procedure is completed; and (b) after the company has appointed its legal representatives and registered those appointments in the Register of Commerce. The application procedure is done at the Servicio de Rentas Internas (SRI) and takes 48 hours after the submission of all required documents (the registered deed, the registered appointments, and the certification of publication).</p> <p>Because the VAT (Impuesto al Valor Agregado) goes by the same identification number, it does not require a separate registration. The RUC is obtained immediately, but a paper receipt is sent by mail in the following 3 days.</p> <p><i>Agency: Servicio de Rentas Internas SRI (National Office of Tax)</i></p>	<p>4 days</p>	<p>no charge</p>
<p><b>9</b></p>	<p><b>Print invoices and VAT forms at an authorized printing shop</b></p> <p>With the RUC, companies must buy invoices from SRI-authorized companies and state monthly VAT declarations on special forms. The cost to print a 100-page book of invoices (one original and two copies) is about USD 40.</p> <p><i>Agency: Any authorized print shop</i></p>	<p>1 day</p>	<p>USD 40</p>
<p><b>10</b></p>	<p><b>Sign up online for Social Security- Instituto Ecuatoriano de Seguridad Social (IESS) and obtain password to operate the online system</b></p> <p>The company must present a petition for an employer identification number (cédula patronal). This identification number is obligatory for employers for purposes of social security, payments covering health, pension, accident and work-related illness.</p> <p>An employer can register with the Social Security online through the webpage of Ecuador's Social Security Institute. After completing the registration online, the employer needs to obtain a password which will allow the employer to operate the system online.</p> <p>The day after registering online, the employer can present the documents/information to the Social Security and obtain the password to operate the online system. The online system will allow the employer to register all employees' movements (entries of new employees and termination of the employment contract, contributions, etc.).</p>	<p>2 days</p>	<p>no charge</p>



No.	Procedure	Time to complete	Cost to complete
	<p><i>Agency: Ecuadorian Institute of Social Security IESS</i></p>		
<p><b>11</b></p>	<p><b>Inscribe all employee contracts with the Ministry of Labor (Inspectoría de Trabajo)</b></p> <p>The department responsible for registering labor contracts is the National Technical Secretariat of Human Resources Development and Public Sector Remuneration SENRES (Secretaría Nacional Técnica de Desarrollo de Recursos Humanos y de Remuneraciones del Sector Público). SENRES is part of the Ministry of Labor.</p> <p><i>Agency: National Technical Secretariat of Human Resources Development and Public Sector</i></p>	<p>2 days</p>	<p>no charge</p>
<p><b>12</b></p>	<p><b>Receive inspection and operations permit from the municipality</b></p> <p>Since 2010, it is necessary for companies to apply for the operations permit in the municipality of Quito. In approximately 15 days after filing the application, the company will receive the inspection of Fire Department and the Secretary of Environment (Secretaría del Ambiente). Then, in approximately 5 days, these two institutions will give the final report to the Municipality of Quito. If these reports are favorable, the Municipality will give the operations permit in approximately 10 days.</p> <p><i>Agency: Municipality of Quito (Administración Zonal del Municipio de Quito)</i></p>	<p>29 days</p>	<p>no charge</p>
<p><b>13</b></p>	<p><b>Obtain "tasa de habilitación" and pay commercial patent at the competent municipality</b></p> <p>The Law of Municipal Regime, which regulates the operation of Municipalities in each city, contemplates the possibility of the Municipalities collecting certain fees or "tasas", as a compensation for a service provided by the municipality.</p> <p>One of the provisions of the Law of Municipal Regime is to collect a fee or "tasa" for the "habilitación y control de establecimientos comerciales e industriales" or the "approval of the ability to operate and control commercial and industrial establishments". Although the tasa de habilitación was phased out on December 31, 2004 for all companies, the payment of the "tasa" is still required in practice for some companies. The fee varies depending on the type of company and the location, and size of the facilities in which the company will operate</p> <p>Before any commercial or industrial business starts operating, the</p>	<p>1 day</p>	<p>USD 50</p>

No.	Procedure	Time to complete	Cost to complete
	<p>Municipality will inspect the building/offices/shop where the business is going to operate to make sure that such place complies with the City's operation requirements for such business. Once the inspection has been made, and the operation of the business has been approved, the Municipality declares such business as able to operate, and grants the "tasa de habilitacion" as evidence of such ability to operate. The average time to obtain the permit is a month.</p> <p>The entrepreneur is also required to pay the Commercial Patent - a tax that every person or company engaged in commercial or industrial activities has to pay to the Municipality of the City where such activities are being executed. The Commercial Patent has to be paid each year. Companies should pay the Commercial Patent Tax within 30 days following the last day of the month when the company started operating.</p> <p><i>Agency: Municipality of Quito (Administración Zonal del Municipio de Quito)</i></p>		

\* Takes place simultaneously with another procedure.

*Note:* Online procedures account for 0.5 days in the total time calculation.

*Source:* *Doing Business* database.

## DEALING WITH CONSTRUCTION PERMITS

Regulation of construction is critical to protect the public. But it needs to be efficient, to avoid excessive constraints on a sector that plays an important part in every economy. Where complying with building regulations is excessively costly in time and money, many builders opt out. They may pay bribes to pass inspections or simply build illegally, leading to hazardous construction that puts public safety at risk. Where compliance is simple, straightforward and inexpensive, everyone is better off.

### What do the indicators cover?

*Doing Business* records the procedures, time and cost for a business in the construction industry to obtain all the necessary approvals to build a warehouse in the economy's largest business city, connect it to basic utilities and register the warehouse so that it can be used as collateral or transferred to another entity.

The ranking of economies on the ease of dealing with construction permits is determined by sorting their distance to frontier scores for dealing with construction permits. These scores are the simple average of the distance to frontier scores for each of the component indicators.

To make the data comparable across economies, *Doing Business* uses several assumptions about the business and the warehouse, including the utility connections.

The business:

- Is a limited liability company operating in the construction business and located in the largest business city. For the 11 economies with a population of more than 100 million, data for a second city have been added. Is domestically owned and operated.
- Has 60 builders and other employees.

The warehouse:

- Is valued at 50 times income per capita.
- Is a new construction (there was no previous construction on the land).

### WHAT THE DEALING WITH CONSTRUCTION PERMITS INDICATORS MEASURE

#### Procedures to legally build a warehouse (number)

Submitting all relevant documents and obtaining all necessary clearances, licenses, permits and certificates

Submitting all required notifications and receiving all necessary inspections

Obtaining utility connections for water and sewerage

Registering the warehouse after its completion (if required for use as collateral or for transfer of the warehouse)

#### Time required to complete each procedure (calendar days)

Does not include time spent gathering information

Each procedure starts on a separate day. Procedures that can be fully completed online are recorded as ½ day.

Procedure considered completed once final document is received

No prior contact with officials

#### Cost required to complete each procedure (% of warehouse value)

Official costs only, no bribes

- Will have complete architectural and technical plans prepared by a licensed architect or engineer.
- Will be connected to water and sewerage (sewage system, septic tank or their equivalent). The connection to each utility network will be 150 meters (492 feet) long.
- Will be used for general storage, such as of books or stationery (not for goods requiring special conditions).
- Will take 30 weeks to construct (excluding all delays due to administrative and regulatory requirements).

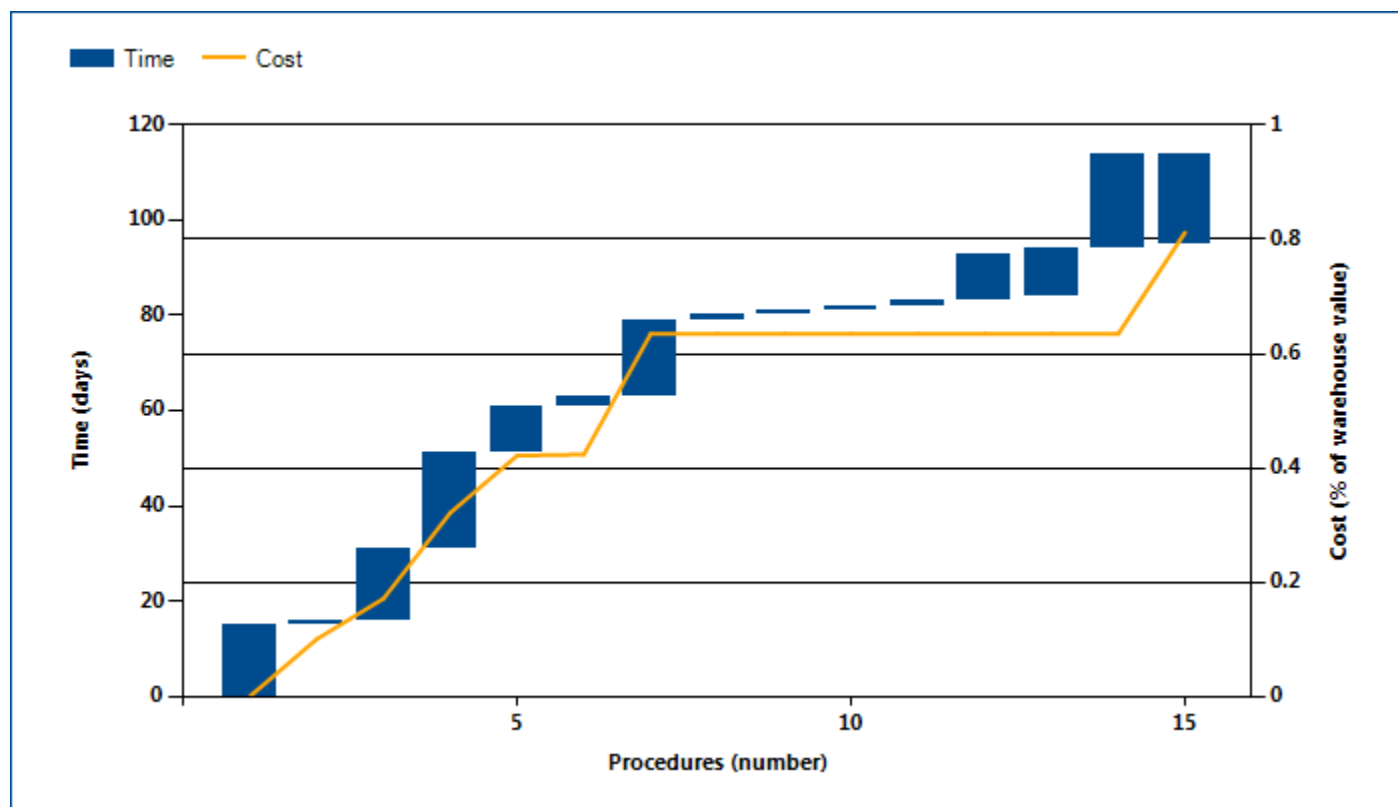
## DEALING WITH CONSTRUCTION PERMITS

### Where does the economy stand today?

What does it take to comply with the formalities to build a warehouse in Ecuador? According to data collected by *Doing Business*, dealing with construction permits there requires 15.0 procedures, takes 114.0 days and costs 0.8% of the warehouse value (figure 3.1). Most indicator sets refer to a case scenario in the largest business city of

an economy, except for 11 economies for which the data are a population-weighted average of the 2 largest business cities. See the chapter on distance to frontier and ease of doing business ranking at the end of this profile for more details.

Figure 3.1 What it takes to comply with formalities to build a warehouse in Ecuador -



Note: Time shown in the figure above may not reflect simultaneity of procedures. Online procedures account for 0.5 days in the total time calculation. For more information on the methodology of the dealing with construction permits indicators, see the *Doing Business* website (<http://www.doingbusiness.org>). For details on the procedures reflected here, see the summary at the end of this chapter.

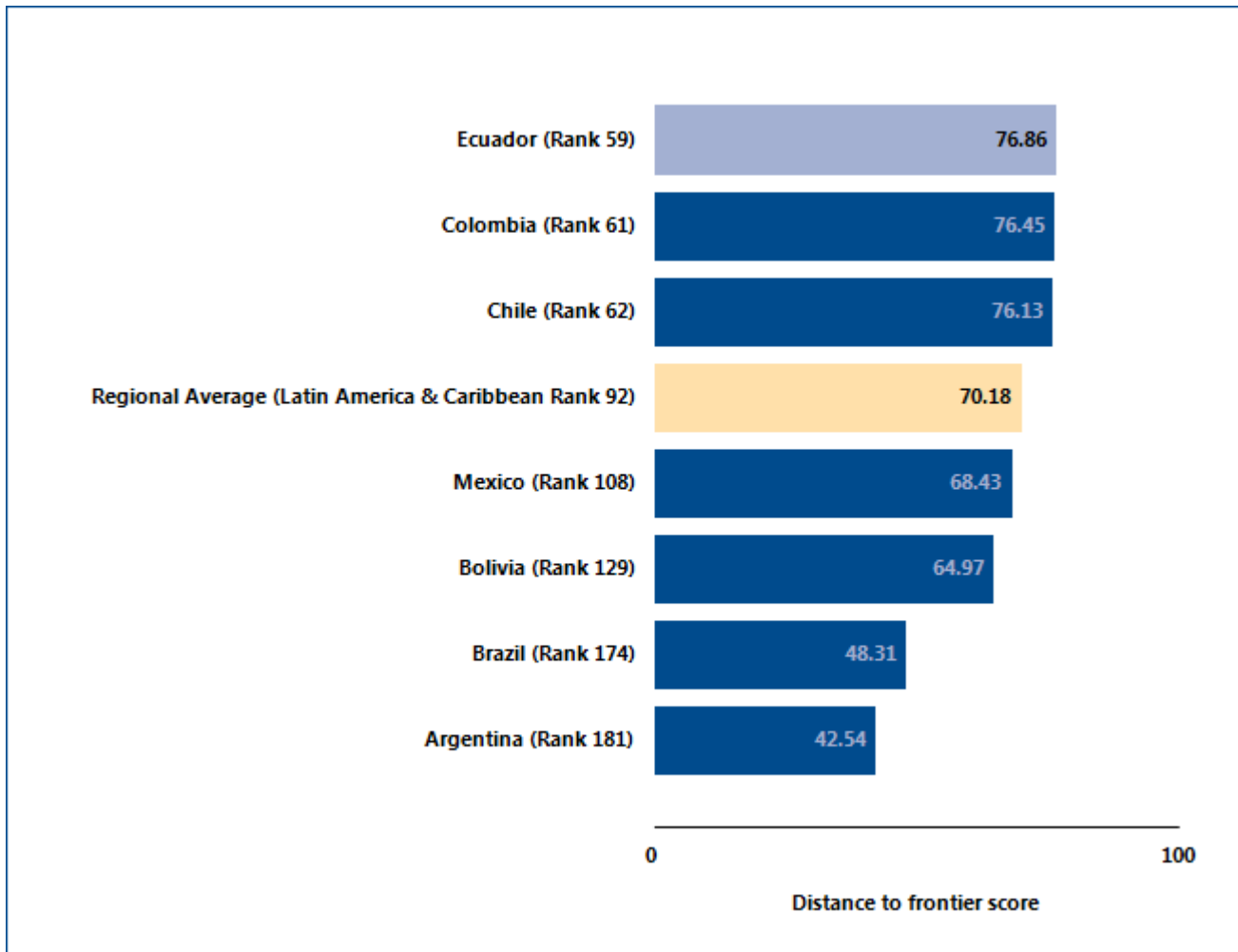
Source: *Doing Business* database.

### DEALING WITH CONSTRUCTION PERMITS

Globally, Ecuador stands at 59 in the ranking of 189 economies on the ease of dealing with construction permits (figure 3.2). The rankings for comparator

economies and the regional average ranking provide other useful information for assessing how easy it is for an entrepreneur in Ecuador to legally build a warehouse.

Figure 3.2 How Ecuador and comparator economies rank on the ease of dealing with construction permits



Source: Doing Business database.

## DEALING WITH CONSTRUCTION PERMITS

### What are the details?

The indicators reported here for Ecuador are based on a set of specific procedures—the steps that a company must complete to legally build a warehouse—identified by *Doing Business* through information collected from experts in construction licensing, including architects, civil engineers, construction lawyers, construction firms, utility service providers and public officials who deal with building regulations. These procedures are those that apply to a company and structure matching the standard assumptions used by *Doing Business* in collecting the data (see the section in this chapter on what the indicators cover).

#### BUILDING A WAREHOUSE

**Estimated cost of construction :** **USD 281,877**

**City :** **Quito**

The procedures, along with the associated time and cost, are summarized below.

Table 3.2 Summary of time, cost and procedures for dealing with construction permits in Ecuador -

No.	Procedure	Time to complete	Cost to complete
1	<p><b>Obtain urban regulation report (Informe de Regulación Urbana - IRM)</b></p> <p>The Urban Regulation Report (Informe de Regulacion Urbana, IRM) is required for most procedures before the District Municipality, such as purchasing, selling, dividing, and building a property, as well as determining if the site is affected by road construction design.</p> <p>Valid for 2 years, this report provides the parameters to subdivide or urbanize the following:</p> <ul style="list-style-type: none"> <li>• Area available to construct the ground floor</li> <li>• Maximum building area</li> <li>• Maximum building height permitted</li> <li>• Maximum number of dwelling units</li> <li>• Building separation distances</li> <li>• Permitted and unauthorized land use</li> <li>• Basic service availability</li> <li>• Manufacturing line (línea de fábrica) reference</li> </ul> <p>To obtain the report, BuildCo must do the following:</p> <ul style="list-style-type: none"> <li>• Purchase the IRM form, whose value is equivalent to 5% of the effective unified basic wage (salario básico unificado vigente) at the respective Subdivision Administration (Administración Zonal)</li> <li>• Register the property's data and enclose a copy of the property tax payment receipt</li> <li>• Submit copies of the citizenship identification and of the updated voting voucher or owner's exemption certificate</li> <li>• Enclose a cartographic sheet of the Geographical Military Institute (scale, 1:5,000 or 1:25,000), showing the exact property location and the respective public deeds registered at the Property Registry</li> <li>• Enclose a copy of the public writ of the estate (a request signed by the owner to guarantee the payment of water, electricity, or telephone service)</li> </ul> <p><i>Agency: Municipality of Quito (Municipio de Quito, Administración Zonal)</i></p>	15 days	USD 2

No.	Procedure	Time to complete	Cost to complete
2	<p><b>Obtain proof of compliance with contribution to Association of Architects</b></p> <p>The proof of payment for the construction contribution is one of the documents required for the approval of the layout plans and the building permit application. The cost is 0.1% of the warehouse value.</p> <p><i>Agency: Association of Architects of Ecuador (Colegio de Arquitectos del Ecuador – CAE) and/or Association of Civil Engineers of Pichincha (Colegio de Ingenieros Civiles de Pichincha)</i></p>	1 day	USD 282
3	<p><b>Request and obtain permit from the Fire Department</b></p> <p><i>Agency: Fire Department</i></p>	15 days	USD 200
4	<p><b>Request approval of the plans</b></p> <p>To request approval of the plans, the following documents must be submitted to the Subdivision Administration (Administración Zonal):</p> <ul style="list-style-type: none"> <li>• Plan approval form for buildings, with data record and stamps</li> <li>• Metropolitan Regulation Report (Informe de Regulación Metropolitana, IRM), updated</li> <li>• Two sets of architectural drawings (scale, 1:100 to 1:50), with an area map plotted on the first sheet of the project. The drawings must contain the plot area, (COS) percentage; (CUS) percentage; construction area at ground level; total building floor area; and total gross construction area, including housing area, business store and office area, parking area, community area, number of dwelling units, and number of parking lots.</li> <li>• If the construction is financed with a mortgage loan, three additional sets must be attached</li> <li>• Proof of payment of contribution to the Association of Architects</li> <li>• Proof of payment of property tax (impuesto predial) corresponding to the current year (simple copy of receipt)</li> <li>• Real estate deed or purchase option agreement duly notarized and registered at the Property Registry</li> <li>• Copies of the municipal registration and professional registration identification cards</li> <li>• Copy of the citizenship card and updated voting voucher or owner's exemption certificate (Los Chillos deemed unnecessary)</li> <li>• Certificates granted by the Metropolitan Water and Sewage Utility Company (EMAAP), stating utility service provision (potable water and sewage) (Los Chillos Administration)</li> </ul> <p>The company may request the approval of the draft project (for consultation before final plan approval). The plans also must be approved by the Fire Department and the Associations for Architects</p>	20 days	USD 423



No.	Procedure	Time to complete	Cost to complete
	<p>and Engineers. The approval of the draft project is valid for 2 years and is informative in nature.</p> <p>The fee is 1.5 x 1/1,000 of total project cost.</p> <p><i>Agency: Association of Architects of Ecuador (Colegio de Arquitectos del Ecuador – CAE) and/or Association of Civil Engineers of Pichincha (Colegio de Ingenieros Civiles de Pichincha)</i></p>		
5	<p><b>Verify structure plan with Association of Engineers</b></p> <p><i>Agency: Association of Architects of Ecuador (Colegio de Arquitectos del Ecuador – CAE) and/or Association of Civil Engineers of Pichincha (Colegio de Ingenieros Civiles de Pichincha)</i></p>	10 days	USD 282
6	<p><b>Obtain construction guarantee and deposit it with the Municipality</b></p> <p>Proof of the guarantee deposit is a required document for the building permit application. Once the land plans have been registered for zoning and before their approval, the Municipality notifies the applicant the amount to be guaranteed (fondo de garantia). The applicant can deposit the guarantee in cash or certified check or in the form of an insurance policy. The insurance policy is purchased in 2 days from a local insurance company. The fee to purchase the guarantee depends on the value to be guaranteed.</p> <p>After construction is finalized, the Municipality will return the guarantee upon inspecting the construction. The guarantee will be returned in full only if the actual construction conforms to the plans approved by the Municipality. It is assumed that the full guarantee is returned to BuildCo upon successful completion of construction. Therefore, the cost is not recorded.</p> <p>However, the transaction fee for the guarantee, which amounts to 0.05% of the guarantee itself, is taken into account because it is non-refundable. The guarantee amount is determined by the Municipality and depends on the type of construction, the size, the sector, and the relevant zone. For construction under 600 sq. m., the guarantee will range between 1.5% and 3% of the warehouse value. For construction over 600 sq. m., the guarantee will be about 4% of the warehouse value.</p> <p><i>Agency: Municipality of Quito (Municipio de Quito)</i></p>	2 days	USD 6
7	<p><b>Obtain the final building permit</b></p> <p>The documents required to obtain the construction work execution clearance are the following:</p> <ul style="list-style-type: none"> <li>• Building permit application form, with stamps and data record</li> </ul>	16 days	USD 595

No.	Procedure	Time to complete	Cost to complete
	<ul style="list-style-type: none"> <li>• Architectural drawing approval report (original or certified copy)</li> <li>• Set of approved architectural drawings (original or certified copy)</li> <li>• Sets (two) of structural maps, with the professional signature registration</li> <li>• Sets (two) of electrical and hydro sanitary installation plans, with the professional signature registration</li> <li>• Proof of payment for building work to professional associations</li> <li>• Proof of the guarantee fund deposit</li> <li>• Proof of payment for plan and drawing approval</li> <li>• Proof of payment to the Metropolitan Water and Sewage Utility Company (EMAAP) for service installation</li> <li>• Construction statistical sheet</li> <li>• Copy of municipal and professional registration cards for the builder and designer (Los Chillos)</li> <li>• Copy of the citizenship card and updated voting voucher or owner's exemption certificate</li> <li>• For four stories or more, survey report for soil and subsoil of more than 2.5 mh and structural calculation report</li> <li>• Proof of payment received of the corresponding property tax for the current year (La Delicia)</li> </ul> <p>This procedure does not entail any charges. However, the scanner services fee is 20% of the current minimum wage for each sheet, and a form must be purchased with the required stamps. The form fee is USD 0.40, which is the same as the cost of the stamps. These fees are on a per-filing basis, and more than one filing is normally necessary.</p> <p><i>Agency: Municipality of Quito/ Empresa Metropolitana de Obras Públicas (EMOP-Q)</i></p>		
8	<p><b>Request and obtain foundation inspection</b></p> <p><i>Agency: Municipality of Quito/ Empresa Metropolitana de Obras Públicas (EMOP-Q)</i></p>	1 day	no charge
9	<p><b>Request and obtain structure inspection</b></p> <p><i>Agency: Municipality of Quito/ Empresa Metropolitana de Obras Públicas (EMOP-Q)</i></p>	1 day	no charge
10	<p><b>Request potable water and drainage connection</b></p> <p>The proof of payment for service installation is one of the documents required for the approval of the layout plans and the building permit application.</p> <p><i>Agency: Water and Sewage Authority (Empresa Metropolitana de Alcantarillado y Agua Potable -EMAAP)</i></p>	1 day	no charge

No.	Procedure	Time to complete	Cost to complete
11	<p><b>Receive water and sewage inspection</b></p> <p>Depending on whether a meter is already available, an inspection may be conducted before BuildCo obtains its water connection. Given that the project considered here is a new construction, it is assumed that BuildCo must obtain the meter. Hence, an inspection also takes place to evaluate the cost of the new service.</p> <p><i>Agency: Water and Sewage Authority (Empresa Metropolitana de Alcantarillado y Agua Potable -EMAAP)</i></p>	1 day	no charge
12	<p><b>Obtain potable water and drainage connection</b></p> <p><i>Agency: Water and Sewage Authority (Empresa Metropolitana de Alcantarillado y Agua Potable -EMAAP)</i></p>	10 days	no charge
13	<p><b>* Request and obtain final inspection</b></p> <p><i>Agency: Municipality of Quito/ Unidad de Control de Edificaciones</i></p>	10 days	no charge
14	<p><b>Obtain habitability permit and guarantee retrieval</b></p> <p>The habitability permit authorizes BuildCo to bring the building into service and enables retrieval of the guarantee fund. To this end, BuildCo must present the following documents at the respective Subdivision Administration (Administración Zonal):</p> <ul style="list-style-type: none"> <li>• Inhabitability permit application form, with stamps and data record</li> <li>• Approved architectural drawings (one copy)</li> <li>• Plan and drawing approval report</li> <li>• Building permit</li> <li>• Original proof of guarantee fund receipt</li> <li>• Citizenship card and updated voting voucher or owner exemption certificate (copy)</li> <li>• For guarantee fund retrieval in cash, an application form must be filed with the General Financial Department (Dirección General Financiera), with the respective stamps</li> </ul> <p><i>Agency: Municipality of Quito (Municipio de Quito)</i></p>	20 days	no charge

No.	Procedure	Time to complete	Cost to complete
15	<p><b>* Register the building at the Property Registry</b></p> <p>If the value of the property exceeds the amount of USD 10,000, the builder will pay a flat fee of USD 500 (plus VAT) for property registration.</p> <p><i>Agency: Property Registry (Registro de la Propiedad)</i></p>	14 days	USD 500

\* Takes place simultaneously with another procedure.

Note: Online procedures account for 0.5 days in the total time calculation.

Source: *Doing Business* database.

## GETTING ELECTRICITY

Access to reliable and affordable electricity is vital for businesses. To counter weak electricity supply, many firms in developing economies have to rely on self-supply, often at a prohibitively high cost. Whether electricity is reliably available or not, the first step for a customer is always to gain access by obtaining a connection.

### What do the indicators cover?

*Doing Business* records all procedures required for a local business to obtain a permanent electricity connection and supply for a standardized warehouse, as well as the time and cost to complete them. These procedures include applications and contracts with electricity utilities, clearances from other agencies and the external and final connection works. The ranking of economies on the ease of getting electricity is determined by sorting their distance to frontier scores for getting electricity. These scores are the simple average of the distance to frontier scores for each of the component indicators. To make the data comparable across economies, several assumptions are used.

The warehouse:

- Is owned by a local entrepreneur, located in the economy's largest business city, in an area where other warehouses are located. For the 11 economies with a population of more than 100 million, data for a second city have been added.
- Is not in a special economic zone where the connection would be eligible for subsidization or faster service.
- Is located in an area with no physical constraints (ie. property not near a railway).
- Is a new construction being connected to electricity for the first time.
- Is 2 stories, both above ground, with a total surface of about 1,300.6 square meters (14,000 square feet), is built on a plot of 929 square meters (10,000 square feet), is used for storage of refrigerated goods

The electricity connection:

- Is 150 meters long and is a 3-phase, 4-wire Y, 140-kilovolt-ampere (kVA) (subscribed capacity) connection.

### WHAT THE GETTING ELECTRICITY INDICATORS MEASURE

#### Procedures to obtain an electricity connection (number)

- Submitting all relevant documents and obtaining all necessary clearances and permits
- Completing all required notifications and receiving all necessary inspections
- Obtaining external installation works and possibly purchasing material for these works
- Concluding any necessary supply contract and obtaining final supply

#### Time required to complete each procedure (calendar days)

- Is at least 1 calendar day
- Each procedure starts on a separate day
- Does not include time spent gathering information
- Reflects the time spent in practice, with little follow-up and no prior contact with officials

#### Cost required to complete each procedure (% of income per capita)

- Official costs only, no bribes
- Excludes value added tax
- Is to either the low-voltage or the medium-voltage distribution network and either overhead or underground, whichever is more common in the area where the warehouse is located. Included only negligible length in the customer's private domain.
- Requires crossing of a 10-meter road but all the works are carried out in a public land, so there is no crossing into other people's private property.
- Involves installing one electricity meter. The monthly electricity consumption will be 26880 kilowatt hour (kWh). The internal electrical wiring has been completed.

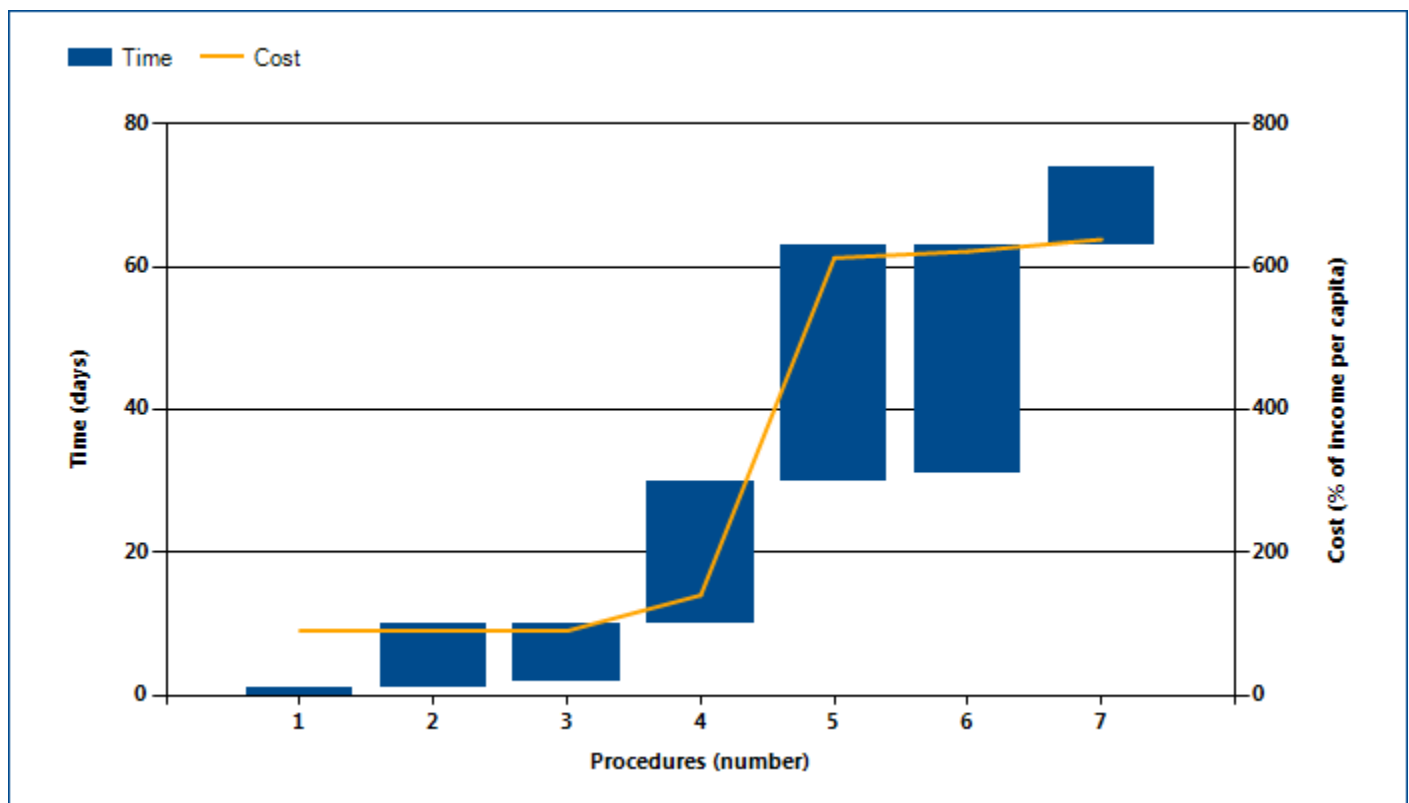
## GETTING ELECTRICITY

### Where does the economy stand today?

What does it take to obtain a new electricity connection in Ecuador? According to data collected by *Doing Business*, getting electricity there requires 7.0 procedures, takes 74.0 days and costs 638.5% of income per capita (figure 4.1).

Most indicator sets refer to a case scenario in the largest business city of an economy, except for 11 economies for which the data are a population-weighted average of the 2 largest business cities. See the chapter on distance to frontier and ease of doing business ranking at the end of this profile for more details.

Figure 4.1 What it takes to obtain an electricity connection in Ecuador -



*Note:* Time shown in the figure above may not reflect simultaneity of procedures. For more information on the methodology of the getting electricity indicators, see the *Doing Business* website (<http://www.doingbusiness.org>). For details on the procedures reflected here, see the summary at the end of this chapter.

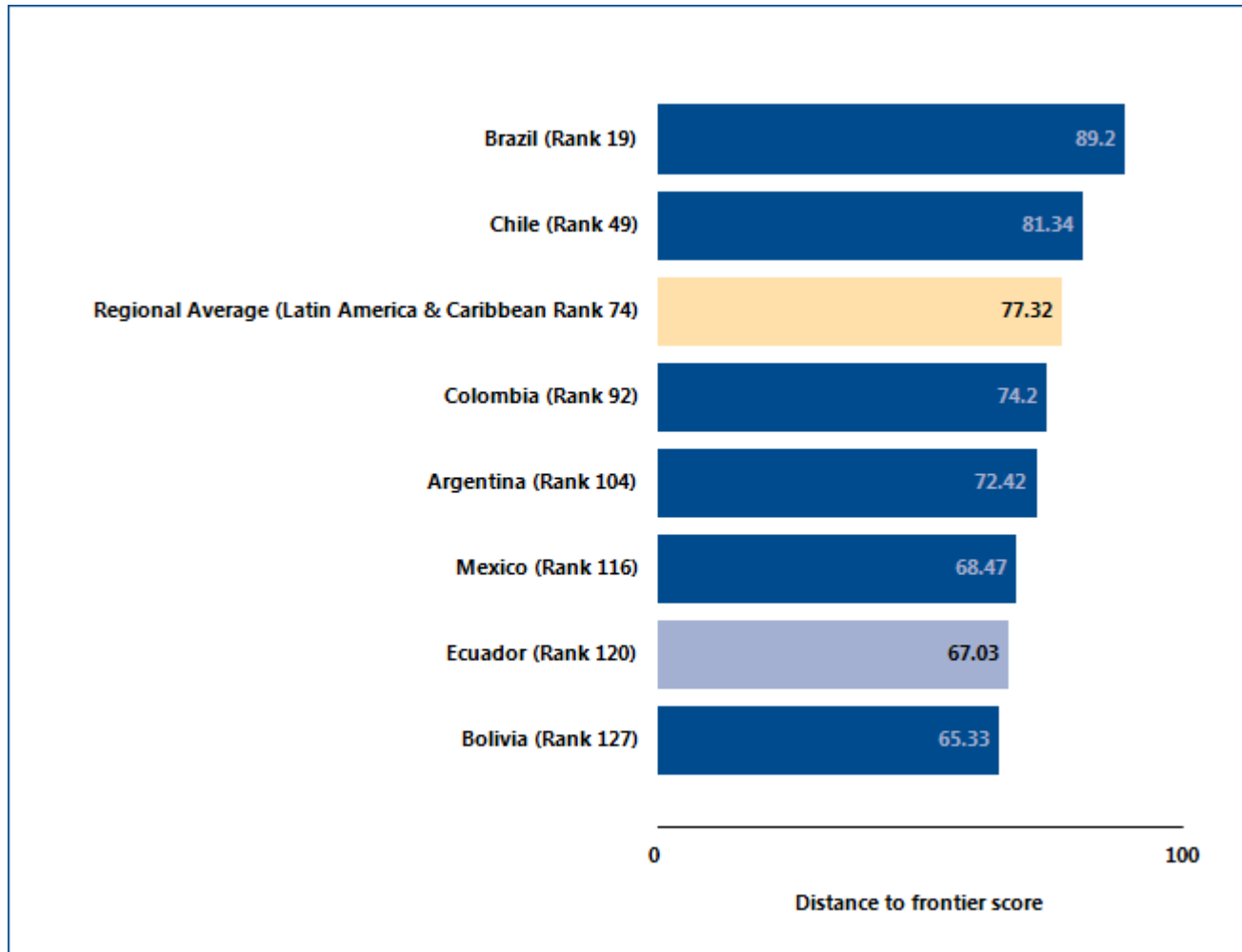
*Source:* *Doing Business* database.

### GETTING ELECTRICITY

Globally, Ecuador stands at 120 in the ranking of 189 economies on the ease of getting electricity (figure 4.2). The rankings for comparator economies and the regional

average ranking provide another perspective in assessing how easy it is for an entrepreneur in Ecuador to connect a warehouse to electricity.

Figure 4.2 How Ecuador and comparator economies rank on the ease of getting electricity



Source: Doing Business database.

## GETTING ELECTRICITY

Obtaining an electricity connection is essential to enable a business to conduct its most basic operations. In many economies the connection process is complicated by the multiple laws and regulations involved—covering service quality, general safety, technical standards, procurement practices and internal wiring installations. In an effort to

ensure safety in the connection process while keeping connection costs reasonable, governments around the world have worked to consolidate requirements for obtaining an electricity connection. What reforms in getting electricity has *Doing Business* recorded in Ecuador (table 4.1)?

Table 4.1 How has Ecuador made getting electricity easier—or not?

By *Doing Business* report year from DB2010 to DB2015

DB year	Reform
<b>DB2014</b>	Ecuador made getting electricity easier by dividing the city of Quito into zones for the purpose of handling applications for new connections—a change that improved the utility's customer service—and by reducing the fees to obtain a connection.

Source: *Doing Business* database.



## GETTING ELECTRICITY

### What are the details?

The indicators reported here for Ecuador are based on a set of specific procedures—the steps that an entrepreneur must complete to get a warehouse connected to electricity by the local distribution utility—identified by *Doing Business*. Data are collected from the distribution utility, then completed and verified by electricity regulatory agencies and independent professionals such as electrical engineers, electrical contractors and construction companies. The electricity distribution utility surveyed is the one serving the area (or areas) in which warehouses are located. If there is a choice of distribution utilities, the one serving the largest number of customers is selected.

#### OBTAINING AN ELECTRICITY CONNECTION

**Name of utility:** Empresa Electrica Quito

**City:** Quito

The procedures are those that apply to a warehouse and electricity connection matching the standard assumptions used by *Doing Business* in collecting the data (see the section in this chapter on what the indicators cover). The procedures, along with the associated time and cost, are summarized below.

Table 4.2 Summary of time, cost and procedures for getting electricity in Ecuador -

No.	Procedure	Time to complete	Cost to complete
1	<p><b>The client hires an electrical engineer listed within the list of Companies or qualified by the Empresa Eléctrica Quito S.A.</b></p> <p>The customer must hire an electrical engineer listed with Empresa Eléctrica Quito S.A. (EEQ). The electrical engineer sends the feasibility request to EEQ on behalf of the client. The electrical engineer also prepares the design to perform the external connection and is in charge of carrying out the works of the external connection.</p> <p><i>Agency: Private Electrical Engineer registered with Empresa Electrica Quito (EEQ)</i></p>	1 calendar day	USD 5,000
2	<p><b>The electrical engineer presents the connection request to Empresa Eléctrica Quito S.A. and awaits the feasibility report</b></p> <p>The service request must be made by a private electrical engineer, who is listed in the listing of Companies or Electrical Engineers qualified by Empresa Eléctrica Quito SA (EEQ). The applicant must provide the Service Feasibility Form, attaching the required documents. The service feasibility is required for projects with a demand greater than 125 kVA. EEQ determines the possibility of meeting the requested demand in the area in question and establishes the conditions needed to optimize the use of the network. The applicant should approach with the following documents:</p> <ul style="list-style-type: none"> <li>• Letter of authorization from the owner.</li> <li>• Copy of identity card of the owner.</li> <li>• Sketch of location in AutoCAD; standards established by the EEQ SA (to provide in hand writing)</li> </ul>	9 calendar days	USD 0

No.	Procedure	Time to complete	Cost to complete
	<ul style="list-style-type: none"> <li>• Estimate of the installed load, peak demand and capacity required with the signature of liability by the qualified Private Engineer EEQ SA</li> <li>• Service Feasibility Form.</li> </ul> <p><i>Agency: Empresa Electrica Quito (EEQ)</i></p>		
<p><b>3</b></p>	<p><b>* Empresa Eléctrica Quito S.A. conducts an inspection on site to prepare the feasibility study</b></p> <p>Taking as reference the sketch of the location, an electrical engineer of the Empresa Eléctrica Quito SA (EEQ) performs the inspection of the site, verifies the technical data of the project and prepares the technical feasibility report. The Head of the Direccion de Distribucion de la Zona reviews the technical report for subsequent approval by the Head of the Engineering Division of Distribution. Finally the customer picks up the approved report at the Secretariat of the relevant Zone.</p> <p><i>Agency: Empresa Electrica Quito (EEQ)</i></p>	<p>1 calendar day</p>	<p>USD 0</p>
<p><b>4</b></p>	<p><b>The contracted engineer prepares the design, submits it for approval by Empresa Eléctrica Quito S.A.</b></p> <p>Before starting with the external connection works, the private electrical engineer must submit the final designs to Empresa Eléctrica Quito S.A. (EEQ). For the approval of the project it is necessary to revise the design, verifying that it is within the norms of the company.</p> <p>The Secretaría de la Zona receives the application for approval with the conditions required. The assigned engineer reviews the technical documentation of the project on site, for verification of the information presented. Any discrepancies between the design and the standards is discussed with the private engineer responsible for the project. Once all comments have been addressed, the Engineer Reviewer assigned proceeds to prepare the Technical Report. The Jefatura del Departamento de la Zona reviews the technical report for their approval. The Secretaría de la Zona reports and delivers the Project Approval Letter to the Private Engineer responsible of the project. After receiving the Project Approval Letter, the private electrical engineer can start the connection works.</p> <p><i>Agency: Private Electrical Engineer registered with Empresa Electrica Quito (EEQ)</i></p>	<p>20 calendar days</p>	<p>USD 2,750</p>

No.	Procedure	Time to complete	Cost to complete
5	<p><b>The contracted engineer carries out the external connection according to the standards set by Empresa Eléctrica Quito S.A.</b></p> <p>During the external connection, EEQ performs a review of the work done by the electrical engineer (Work inspection). The purpose of the inspections is to ensure that facilities are constructed as established in the approved project, that correct materials are used and that the installation is a reliable and safe.</p> <p>In order to solicit the final inspection of the construction the engineer has to submit the following documents:</p> <ul style="list-style-type: none"> <li>• Project Approval Letter issued by the Company.</li> <li>• Design Documentation Project Approved (folder).</li> <li>• Order Form for inspection of the work.</li> </ul> <p>The Private Engineer presents the request for Project Approval attaching the requirements needed for this procedure at the Direccion de Distribucion Zonal which assigns an inspector to review the work on the site and to coordinate the scheduled job with the area of Operación y Mantenimiento. Finally the auditing Engineer prepares the Notice of Charge for services provided on site.</p> <p><i>Agency: Private Electrical Engineer registered with Empresa Electrica Quito (EEQ)</i></p>	33 calendar days	USD 26,000
6	<p><b>* The client obtains an excavation permit for the laying of the underground cable from the relevant department at the Municipality (La Empresa Metropolitana de Movilidad y Obras Públicas de Quito (EMMOP-Q))</b></p> <p>The client has to submit the electrical project approved by EEQ with the application in order to obtain an excavation permit.</p> <p><i>Agency: La Empresa Metropolitana de Movilidad y Obras Públicas de Quito (EMMOP-Q) en el Municipio de Quito</i></p>	21 calendar days	USD 500
7	<p><b>The client pays the guarantee deposit and Empresa Eléctrica Quito S.A. provides the power for the project</b></p> <p>The engineer in charge of the project requests the powering of the Work at the Secretaría del Departamento de Fiscalización de Redes. The applicant should approach with the following documents:</p> <ul style="list-style-type: none"> <li>• Receipt of payment of work undertaken by the company on site.</li> <li>• Reentry form of materials to the warehouse.</li> <li>• Payment Receipt to the College of Engineering (CIEEPI). This receipt is no longer required</li> <li>• Receipt of equipment and materials.</li> </ul>	11 calendar days	USD 954.27

No.	Procedure	Time to complete	Cost to complete
	<ul style="list-style-type: none"> <li>• updated map with the requested changes.</li> <li>• Powering request.</li> </ul> <p>The Auditing Engineer is assigned to coordinate the powering of the work with the Departamento de Operación y Mantenimiento Urbano/Rural. The powering works are done by the Department of Operación y Mantenimiento Urbano/Rural , the department will report any updates or the successful implementation.</p> <p>The guarantee deposit is a deposit equivalent to one month's consumption, calculated at current rates, by type of consumer. In the case of new customers, the value of the guarantee is calculated based on estimated monthly consumption according to the installed load. The security deposit is returned without interest when the consumer stops using the service, and is current with payments. It is not possible to pay with a bank guarantee.</p> <p><i>Agency: Empresa Electrica Quito (EEQ)</i></p>		

\* Takes place simultaneously with another procedure.

Source: *Doing Business* database.

## REGISTERING PROPERTY

Ensuring formal property rights is fundamental. Effective administration of land is part of that. If formal property transfer is too costly or complicated, formal titles might go informal again. And where property is informal or poorly administered, it has little chance of being accepted as collateral for loans—limiting access to finance.

### What do the indicators cover?

*Doing Business* records the full sequence of procedures necessary for a business to purchase property from another business and transfer the property title to the buyer's name. The transaction is considered complete when it is opposable to third parties and when the buyer can use the property, use it as collateral for a bank loan or resell it. The ranking of economies on the ease of registering property is determined by sorting their distance to frontier scores for registering property. These scores are the simple average of the distance to frontier scores for each of the component indicators. To make the data comparable across economies, several assumptions about the parties to the transaction, the property and the procedures are used.

The parties (buyer and seller):

- Are limited liability companies, 100% domestically and privately owned and perform general commercial activities.
- Are located in the economy's largest business city<sup>2</sup>.
- Have 50 employees each, all of whom are nationals.

The property (fully owned by the seller):

- Has a value of 50 times income per capita. The sale price equals the value.
- Is registered in the land registry or cadastral, or both, and is free of title disputes.
- Property will be transferred in its entirety.

### WHAT THE REGISTERING PROPERTY INDICATORS MEASURE

#### Procedures to legally transfer title on immovable property (number)

Preregistration (for example, checking for liens, notarizing sales agreement, paying property transfer taxes)

Registration in the economy's largest business city<sup>2</sup>

Postregistration (for example, filing title with the municipality)

#### Time required to complete each procedure (calendar days)

Does not include time spent gathering information

Each procedure starts on a separate day. Procedures that can be fully completed online are recorded as ½ day.

Procedure considered completed once final document is received

No prior contact with officials

#### Cost required to complete each procedure (% of property value)

Official costs only, no bribes

No value added or capital gains taxes included

- Is located in a periurban commercial zone, and no rezoning is required.
- Has no mortgages attached, has been under the same ownership for the past 10 years.
- Consists of 557.4 square meters (6,000 square feet) of land and a 10-year-old, 2-story warehouse of 929 square meters (10,000 square feet). The warehouse is in good condition and complies with all safety standards, building codes and legal requirements. There is no heating system.

<sup>2</sup> For the 11 economies with a population of more than 100 million, data for a second city have been added.

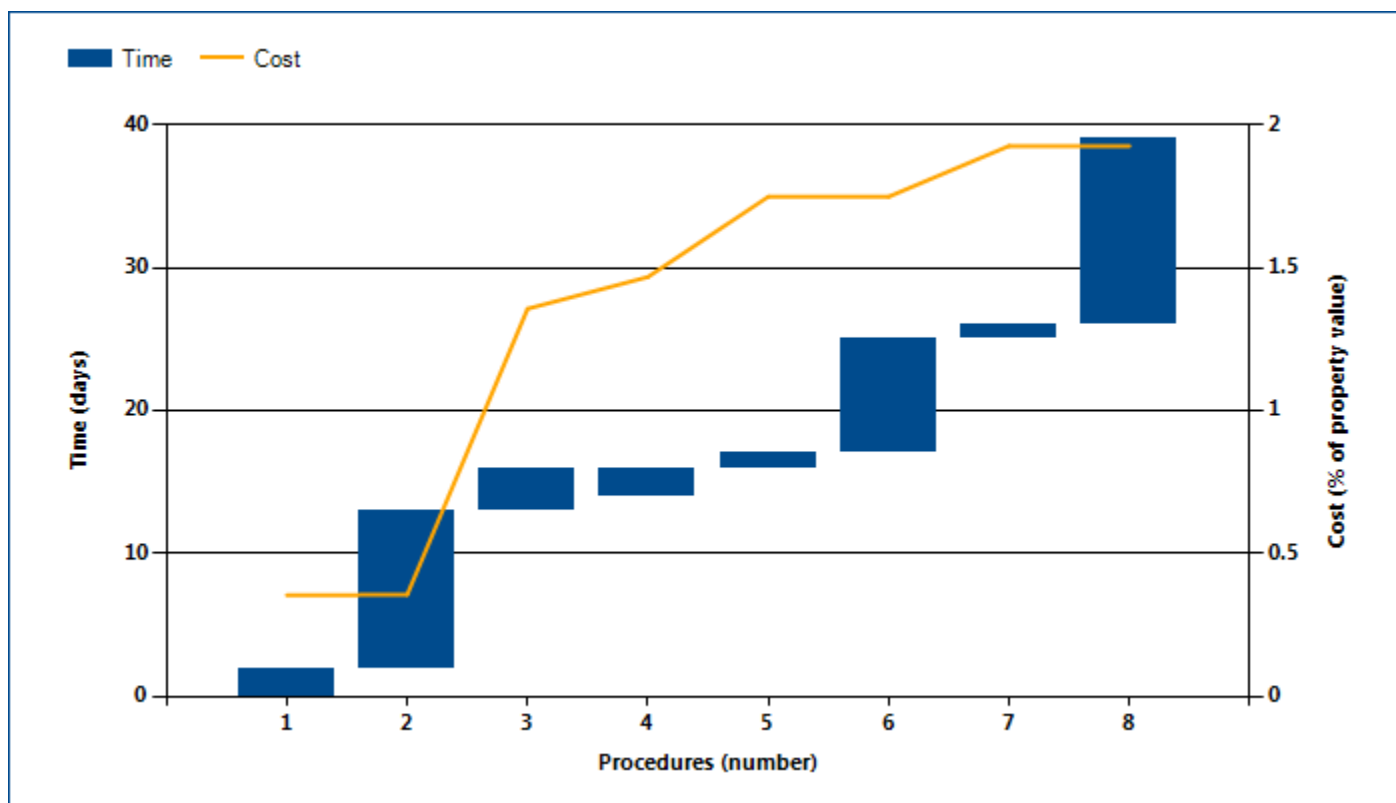
## REGISTERING PROPERTY

### Where does the economy stand today?

What does it take to complete a property transfer in Ecuador? According to data collected by *Doing Business*, registering property there requires 8.0 procedures, takes 39.0 days and costs 1.9% of the property value (figure 5.1).

Most indicator sets refer to a case scenario in the largest business city of an economy, except for 11 economies for which the data are a population-weighted average of the 2 largest business cities. See the chapter on distance to frontier and ease of doing business ranking at the end of this profile for more details.

Figure 5.1 What it takes to register property in Ecuador -



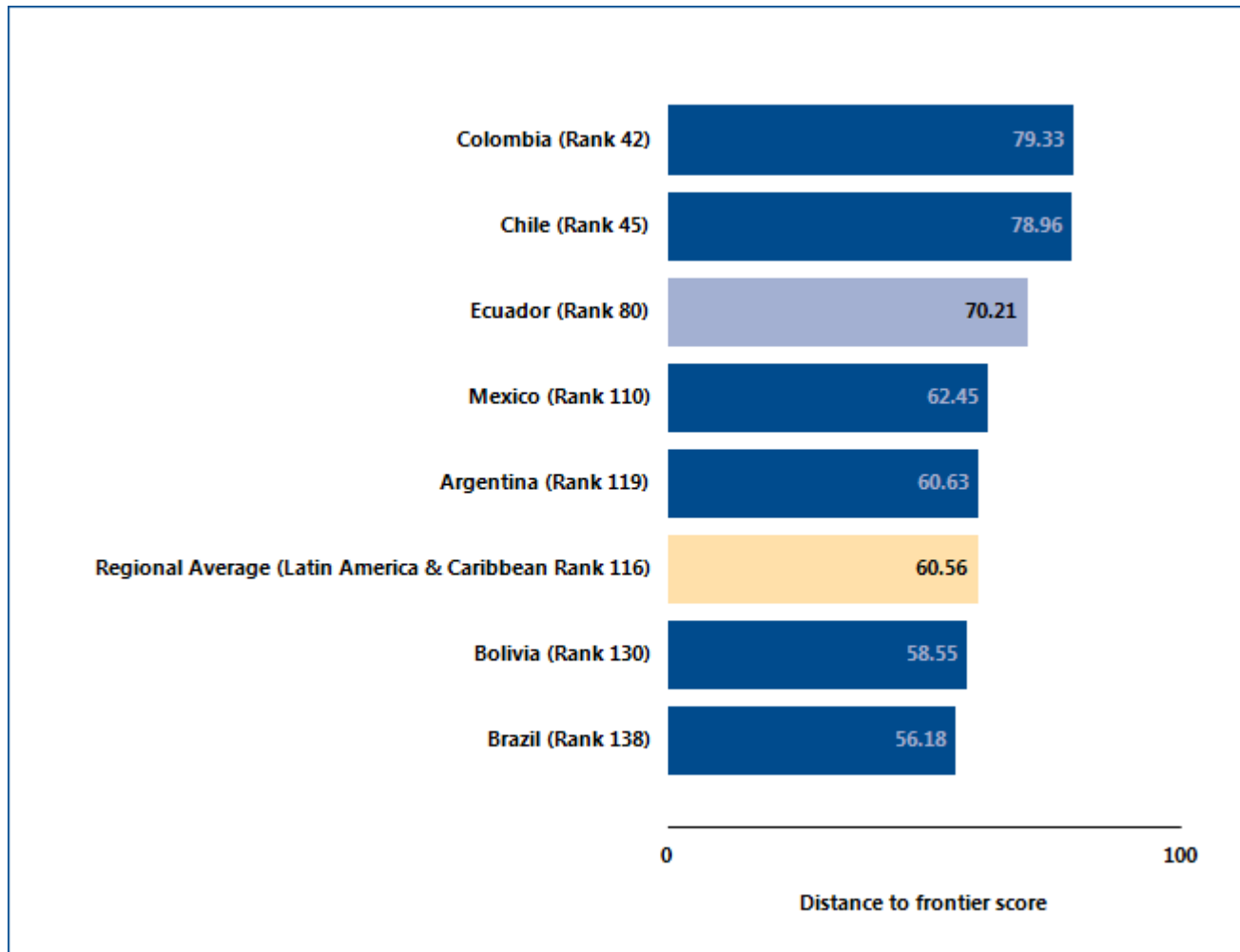
Note: Time shown in the figure above may not reflect simultaneity of procedures. Online procedures account for 0.5 days in the total time calculation. For more information on the methodology of the registering property indicators, see the *Doing Business* website (<http://www.doingbusiness.org>). For details on the procedures reflected here, see the summary at the end of this chapter. Source: *Doing Business* database.

### REGISTERING PROPERTY

Globally, Ecuador stands at 80 in the ranking of 189 economies on the ease of registering property (figure 5.2). The rankings for comparator economies and the

regional average ranking provide other useful information for assessing how easy it is for an entrepreneur in Ecuador to transfer property.

Figure 5.2 How Ecuador and comparator economies rank on the ease of registering property



Source: Doing Business database.

## REGISTERING PROPERTY

Economies worldwide have been making it easier for entrepreneurs to register and transfer property—such as by computerizing land registries, introducing time limits for procedures and setting low fixed fees. Many have cut

the time required substantially—enabling buyers to use or mortgage their property earlier. What property registration reforms has *Doing Business* recorded in Ecuador (table 5.1)?

Table 5.1 How has Ecuador made registering property easier—or not?

By *Doing Business* report year from DB2010 to DB2015

DB year	Reform
<b>DB2013</b>	In Ecuador property transfers became more time consuming as a result of implementation problems in transferring authority over property records to the municipality of Quito.

*Note:* For information on reforms in earlier years (back to DB2005), see the *Doing Business* reports for these years, available at <http://www.doingbusiness.org>.

*Source:* *Doing Business* database.



## REGISTERING PROPERTY

### What are the details?

The indicators reported here are based on a set of specific procedures—the steps that a buyer and seller must complete to transfer the property to the buyer's name—identified by *Doing Business* through information collected from local property lawyers, notaries and property registries. These procedures are those that apply to a transaction matching the standard assumptions used by *Doing Business* in collecting the data (see the section in this chapter on what the indicators cover).

#### STANDARD PROPERTY TRANSFER

**Property value:** USD 281,877

**City:** Quito

The procedures, along with the associated time and cost, are summarized below.

Table 5.2 Summary of time, cost and procedures for registering property in Ecuador

No.	Procedure	Time to complete	Cost to complete
1	<p><b>Lawyer prepares the contract</b></p> <ul style="list-style-type: none"> <li>• A rough copy of the contract, "Minuta", is prepared by a lawyer.</li> <li>• It is mandatory to hire a lawyer to register property in Ecuador, according to the "Ley de federación de Abogados" of March 7th 1974</li> <li>• Lawyer's fees are calculated on the market price of the property</li> </ul> <p><i>Agency: Lawyer</i></p>	2 days	USD 1,000
2	<p><b>Obtain a non-encumbrance certificate ("Certificado de gravámenes") from the Property Registry</b></p> <p>A certificate of real estate encumbrances ("Certificado de Gravámenes") must be obtained at the Municipality (Real Estate Public Registry). The certificate remains valid for 45 days (with the certificate dated with the request date, and not the date the document is issued). If the registration has not been requested by then, a new certificate would have to be requested.</p> <p><i>Agency: Municipality, Real Estate Public Registry</i></p>	7-15 days	USD 7.00
3	<p><b>Pay various taxes at the Municipality</b></p> <p>These taxes are paid based on the official or on the market value of the property. The Municipality calculates the taxes according to the highest value of the two. The Property Appreciation tax (a capital gains tax) is also paid at this stage and is calculated on the difference between the sale-price and acquisition-price of the property. In addition, the amount of the tax is reduced taking into account the economic benefits added to the property by the seller and the antiquity of the property. The tax is 10% of the difference. The tax was cut to 0.5% only for the first transfer</p>	3 days (simultaneous with Procedures 4 and 5)	1% of property price (Transfer tax, or "Alcabala")

No.	Procedure	Time to complete	Cost to complete														
	<p>of any real estate delivered after January 1st, 2006, with a discount of 5% of that for every year old that the property/building is. The registration tax (1% of the official value) was eliminated. After payment of the taxes, the Municipality will issue a municipal permit-letter and register the property in the cadastre. The documentation shall include: (a) Notarized public deed (b) Previous property titles (c) Contracting parties identification documents (d) Encumbrance certificate (obtained in Procedure 2) (e) Copy of the municipal permit for commercial activities for companies for the year in which the transfer is performed (patente municipal); (f) Copy of the Unique Contributors Number (RUC); (g) Copy of the 1.5 x 1000 municipal tax of the companies; (h) Property Appreciation Tax form duly signed by the Seller; (i) Letter of appointment of the legal representatives of both companies; (j) Minutes of the meeting of the Board of Shareholder of both companies in which the board authorizes the legal representative to buy and/or sell the property of the company; Copy of the voting certificate of the legal representatives which appear in the contract; (k) Certificate of payment of the municipal annual tax of the property (impuesto predial)</p> <p><i>Agency: Municipality of Quito (Administración Zonal del Distrito Metropolitano de Quito)</i></p>																
<p><b>4</b></p>	<p><b>* Pay taxes at the Province Council (Consejo Provincial)</b></p> <p>Some additional taxes must be paid at the Consejo Provincial de Pichincha (Provincial Council). These taxes were lowered in 2006 in Quito to 0.1% ("Adicional de registro") + 0.01% ("Adicional de alcabala"), and \$1.80 administrative fee for each tax (total charge \$3.60). The value used to calculate the fees is the highest value between the cadastral value and the contract value. The cadastre was updated in 2005 and the values are reasonably close to reality.</p> <p><i>Agency: Province Council (Consejo Provincial)</i></p>	<p>1 day (simultaneous with Procedures 3 and 5)</p>	<p>0.11% of property value (Provincial transfer tax) + USD 1.80 administrative fee is for each tax</p>														
<p><b>5</b></p>	<p><b>Notary notarizes the public deed</b></p> <p>The public deed is notarized by a public notary. Notary's fees were changed according to regulations passed on May 22nd, 2012. The fees for property transfer are as follows:</p> <p>The Notary's fees are calculated according to the following table:</p> <table border="0"> <tr> <td>0-5.000</td> <td>10% of Minimum Salary</td> </tr> <tr> <td>5.000-10.000</td> <td>15% of Minimum Salary</td> </tr> <tr> <td>10.000-30.000</td> <td>25% of Minimum Salary</td> </tr> <tr> <td>30.000-60.000</td> <td>35% of Minimum Salary</td> </tr> <tr> <td>60.000-90.000</td> <td>60% of Minimum Salary</td> </tr> <tr> <td>90.000-150.000</td> <td>90% of Minimum Salary</td> </tr> <tr> <td>150.000-300.000</td> <td>150% of Minimum Salary</td> </tr> </table>	0-5.000	10% of Minimum Salary	5.000-10.000	15% of Minimum Salary	10.000-30.000	25% of Minimum Salary	30.000-60.000	35% of Minimum Salary	60.000-90.000	60% of Minimum Salary	90.000-150.000	90% of Minimum Salary	150.000-300.000	150% of Minimum Salary	<p>1 day</p>	<p>USD 510 of notary's fees + 0.1% (notary's general expenses) of the property value</p>
0-5.000	10% of Minimum Salary																
5.000-10.000	15% of Minimum Salary																
10.000-30.000	25% of Minimum Salary																
30.000-60.000	35% of Minimum Salary																
60.000-90.000	60% of Minimum Salary																
90.000-150.000	90% of Minimum Salary																
150.000-300.000	150% of Minimum Salary																

No.	Procedure	Time to complete	Cost to complete
	<p>300.000-600.000 200% of Minimum Salary                      600.000... 250% of Minimum Salary                      After the amount surpasses 2 million dollars, the Notary will charge an additional Minimum Salary for each million or fraction of a million, the maximum amount that can be charged is USD 6,800.00.                      Note: According to the Ministry Agreement No. 253, published in the Official Gazette No. 167 of January 22, 2014, determined that the Minimum Salary for 2014 is USD 340.00.</p> <p><i>Agency: Notary</i></p>		
<p><b>6</b></p>	<p><b>Conduct a general check at the Property Registry</b></p> <p>The Municipal permit-letter obtained in Procedure 5 must be taken to the Real Estate Public Registry together with the notarized public deed. The Registry does a general check of the documents and the history of the property. The documentation shall include: (i) Public deed (notarized in Procedure 6) (ii) Receipts of tax payments obtained in Procedures 3-4</p> <p><i>Agency: Municipality, Real Estate Public Registry</i></p>	<p>5-10 days</p>	<p>no cost</p>
<p><b>7</b></p>	<p><b>Pay registration fee at the Property Registry</b></p> <p>After the revision, the amount of the registration fee to be paid is obtained from the Registry. The fee is paid according to the ordinance No.0185 issued by the Consejo Metropolitano de Quito issue in February 23, 2012. The fee is paid in the same building and office where the documentation is submitted at the property registry.</p> <p><i>Agency: Municipality, Real Estate Public Registry</i></p>	<p>1 day</p>	<p>The current municipal fee is as follows:                      0.01 - 3,000.00: inscription fee of USD 223,000.01 - 6,600.00 : inscription fee of USD 306,600.01 - 10,000.00: inscription fee of USD 3510,000.01 - 15,000.00: inscription fee of USD 40 15,000.01 - 25,000.00: inscription fee of USD 50 25,000.01 - 30,000.00: inscription fee of USD 10030,000.01 - 35,000.00: inscription fee of USD 16035,000.01</p>

No.	Procedure	Time to complete	Cost to complete
			- 40,000.00: inscription fee of USD 20040,000.01 - and up: for the first US\$ 10,000 the amount charged will be US\$ 100, plus 0.5% of the amount exceeding US\$ 10,000. In no case will the tariff for each service will exceed US\$ 500
8	<b>Obtain notice of registration from the Property Registry</b>  After payment of the registration fee, the Real Estate Public Registry issues a notice of registration.  <i>Agency: Municipality, Real Estate Public Registry</i>	10-15 days	no cost

\* Takes place simultaneously with another procedure.

Note: Online procedures account for 0.5 days in the total time calculation.

Source: Doing Business database.

## GETTING CREDIT

Two types of frameworks can facilitate access to credit and improve its allocation: credit information systems and borrowers and lenders in collateral and bankruptcy laws. Credit information systems enable lenders' rights to view a potential borrower's financial history (positive or negative)—valuable information to consider when assessing risk. And they permit borrowers to establish a good credit history that will allow easier access to credit. Sound collateral laws enable businesses to use their assets, especially movable property, as security to generate capital—while strong creditors' rights have been associated with higher ratios of private sector credit to GDP.

### What do the indicators cover?

*Doing Business* assesses the sharing of credit information and the legal rights of borrowers and lenders with respect to secured transactions through 2 sets of indicators. The depth of credit information index measures rules and practices affecting the coverage, scope and accessibility of credit information available through a credit registry or a credit bureau. The strength of legal rights index measures whether certain features that facilitate lending exist within the applicable collateral and bankruptcy laws. *Doing Business* uses two case scenarios, Case A and Case B, to determine the scope of the secured transactions system, involving a secured borrower and a secured lender and examining legal restrictions on the use of movable collateral (for more details on each case, see the Data Notes section of the *Doing Business 2015* report). These scenarios assume that the borrower:

- Is a private limited liability company.
- Has its headquarters and only base of operations in the largest business city. For the 11 economies with a population of more than 100 million, data for a second city have been added.

### WHAT THE GETTING CREDIT INDICATORS MEASURE

#### Strength of legal rights index (0–12)<sup>3</sup>

Rights of borrowers and lenders through collateral laws

Protection of secured creditors' rights through bankruptcy laws

#### Depth of credit information index (0–8)<sup>4</sup>

Scope and accessibility of credit information distributed by credit bureaus and credit registries

#### Credit bureau coverage (% of adults)

Number of individuals and firms listed in largest credit bureau as percentage of adult population

#### Credit registry coverage (% of adults)

Number of individuals and firms listed in credit registry as percentage of adult population

- Has up to 50 employees.
- Is 100% domestically owned, as is the lender.

The ranking of economies on the ease of getting credit is determined by sorting their distance to frontier scores for getting credit. These scores are the distance to frontier score for the strength of legal rights index and the depth of credit information index.

<sup>3</sup> For the legal rights index, 2 new points are added in *Doing Business 2015* for new data collected to assess the overall legal framework for secured transactions and the functioning of the collateral registry.

<sup>4</sup> For the credit information index, 2 new points are added in *Doing Business 2015* for new data collected on accessing borrowers' credit information online and availability of credit scores.

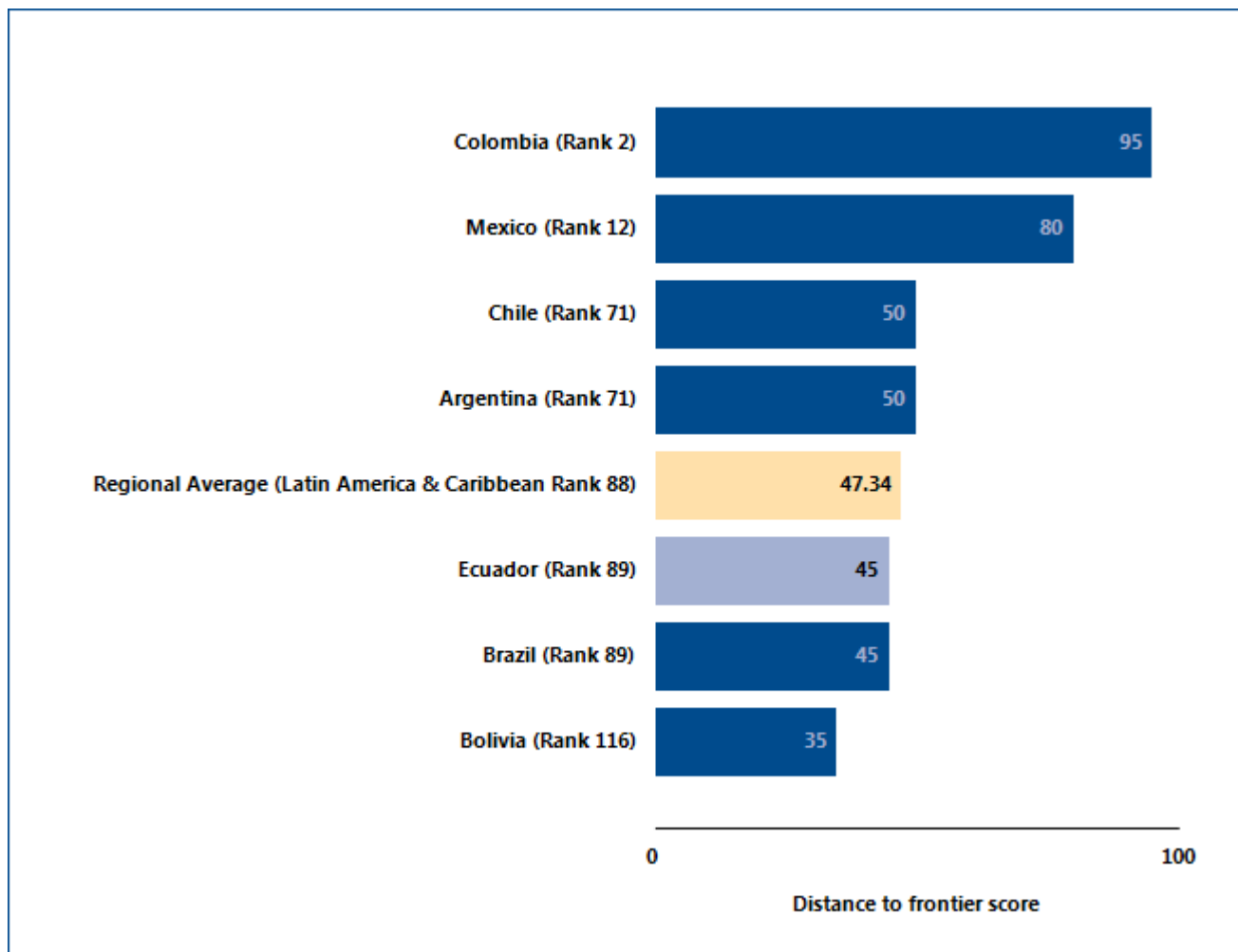
## GETTING CREDIT

### Where does the economy stand today?

How well do the credit information system and collateral and bankruptcy laws in Ecuador facilitate access to credit? The economy has a score of 8 on the depth of credit information index and a score of 1 on the strength of legal rights index (see the summary of scoring at the end of this chapter for details). Higher scores indicate more credit information and stronger legal rights for borrowers and lenders.

Globally, Ecuador stands at 89 in the ranking of 189 economies on the ease of getting credit (figure 6.1). The rankings for comparator economies and the regional average ranking provide other useful information for assessing how well regulations and institutions in Ecuador support lending and borrowing.

Figure 6.1 How Ecuador and comparator economies rank on the ease of getting credit



Source: Doing Business database.

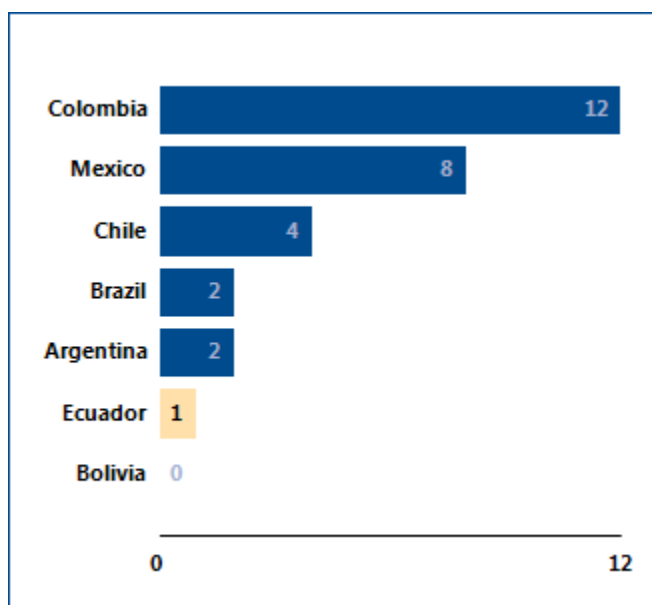
### GETTING CREDIT

One way to put an economy's score on the getting credit indicators into context is to see where the economy stands in the distribution of scores across economies. Figure 6.2 highlights the score on the strength of legal

rights index for Ecuador and shows the scores for comparator economies as well as the regional average score. Figure 6.3 shows the same for the depth of credit information index.

Figure 6.2 How strong are legal rights for borrowers and lenders?

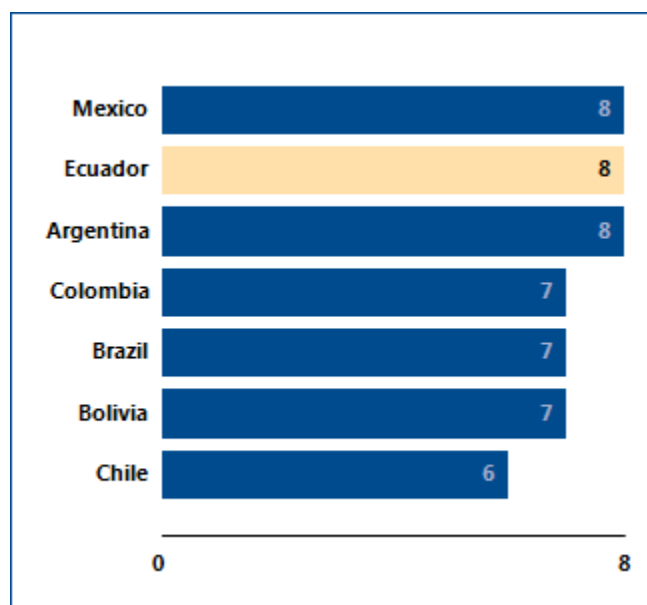
Economy scores on strength of legal rights index



Note: Higher scores indicate that collateral and bankruptcy laws are better designed to facilitate access to credit.  
Source: Doing Business database.

Figure 6.3 How much credit information is shared—and how widely?

Economy scores on depth of credit information index



Note: Higher scores indicate the availability of more credit information, from either a credit registry or a credit bureau, to facilitate lending decisions. If the credit bureau or registry is not operational or covers less than 5% of the adult population, the total score on the depth of credit information index is 0.  
Source: Doing Business database.

## GETTING CREDIT

When economies strengthen the legal rights of lenders and borrowers under collateral and bankruptcy laws, and increase the scope, coverage and accessibility of credit

information, they can increase entrepreneurs' access to credit. What credit reforms has *Doing Business* recorded in Ecuador (table 6.1)?

Table 6.1 How has Ecuador made getting credit easier—or not?  
By *Doing Business* report year from DB2010 to DB2015

DB year	Reform
<b>DB2010</b>	Ecuador's credit bureau started to distribute historical data, improving access to credit information.

*Note:* For information on reforms in earlier years (back to DB2005), see the *Doing Business* reports for these years, available at <http://www.doingbusiness.org>.

*Source:* *Doing Business* database.



## GETTING CREDIT

### What are the details?

The getting credit indicators reported here for Ecuador are based on detailed information collected in that economy. The data on credit information sharing are collected through a survey of a credit registry and/or credit bureau (if one exists). To construct the depth of credit information index, a score of 1 is assigned for each of 8 features of the credit registry or credit bureau (see summary of scoring below).

The data on the legal rights of borrowers and lenders are gathered through a survey of financial lawyers and verified through analysis of laws and regulations as well as public sources of information on collateral and bankruptcy laws. For the strength of legal rights index, a score of 1 is assigned for each of 10 aspects related to legal rights in collateral law and 2 aspects in bankruptcy law.

Strength of legal rights index (0–12)	Index score: 1
Does an integrated or unified legal framework for secured transactions that extends to the creation, publicity and enforcement of functional equivalents to security interests in movable assets exist in the economy?	No
Does the law allow businesses to grant a non possessory security right in a single category of movable assets, without requiring a specific description of collateral?	No
Does the law allow businesses to grant a non possessory security right in substantially all of its assets, without requiring a specific description of collateral?	No
May a security right extend to future or after-acquired assets, and may it extend automatically to the products, proceeds or replacements of the original assets?	No
Is a general description of debts and obligations permitted in collateral agreements; can all types of debts and obligations be secured between parties; and can the collateral agreement include a maximum amount for which the assets are encumbered?	Yes
Is a collateral registry in operation for both incorporated and non-incorporated entities, that is unified geographically and by asset type, with an electronic database indexed by debtor's name?	No
Does a notice-based collateral registry exist in which all functional equivalents can be registered?	No
Does a modern collateral registry exist in which registrations, amendments, cancellations and searches can be performed online by any interested third party?	No
Are secured creditors paid first (i.e. before tax claims and employee claims) when a debtor defaults outside an insolvency procedure?	No
Are secured creditors paid first (i.e. before tax claims and employee claims) when a business is liquidated?	No
Are secured creditors subject to an automatic stay on enforcement when a debtor enters a court-supervised reorganization procedure? Does the law protect secured creditors' rights by providing clear grounds for relief from the stay and/or sets a time limit for it?	No

Strength of legal rights index (0–12)	Index score: 1
Does the law allow parties to agree on out of court enforcement at the time a security interest is created? Does the law allow the secured creditor to sell the collateral through public auction and private tender, as well as, for the secured creditor to keep the asset in satisfaction of the debt?	No

Depth of credit information index (0–8)	Credit bureau	Credit registry	Index score: 8
By law, do borrowers have the right to access their data in the credit bureau or credit registry?	Yes	No	1
Can banks and financial institutions access borrowers' credit information online (for example, through an online platform, a system-to-system connection or both)?	Yes	No	1
Are bureau or registry credit scores offered as a value-added service to help banks and financial institutions assess the creditworthiness of borrowers?	Yes	No	1
Are data on both firms and individuals distributed?	Yes	No	1
Are both positive and negative credit data distributed?	Yes	No	1
Are data from retailers or utility companies - in addition to data from banks and financial institutions - distributed?	Yes	No	1
Are at least 2 years of historical data distributed? (Credit bureaus and registries that distribute more than 10 years of negative data or erase data on defaults as soon as they are repaid obtain a score of 0 for this component.)	Yes	No	1
Are data on loan amounts below 1% of income per capita distributed?	Yes	No	1

Note: Prior to *Doing Business 2015*, the depth of credit information index covered only the first 6 features listed above. An economy receives a score of 1 if there is a "yes" to either bureau or registry. If the credit bureau or registry is not operational or covers less than 5% of the adult population, the total score on the depth of credit information index is 0.

Coverage	Credit bureau (% of adults)	Credit registry (% of adults)
Number of firms	84,211	0
Number of individuals	7,217,515	0
Percent of total	73.0	0.0

*Source: Doing Business database.*

## PROTECTING MINORITY INVESTORS

Protecting minority investors matters for the ability of companies to raise the capital they need to grow, innovate, diversify and compete. Effective regulations define related-party transactions precisely, promote clear and efficient disclosure requirements, require shareholder participation in major decisions of the company and set detailed standards of accountability for company insiders.

### What do the indicators cover?

*Doing Business* measures the protection of minority investors from conflicts of interest through one set of indicators and shareholders' rights in corporate governance through another. The ranking of economies on the strength of minority investor protections is determined by sorting their distance to frontier scores for protecting minority investors. These scores are the simple average of the distance to frontier scores for the extent of conflict of interest regulation index and the extent of shareholder governance index. To make the data comparable across economies, a case study uses several assumptions about the business and the transaction.

The business (Buyer):

- Is a publicly traded corporation listed on the economy's most important stock exchange (or at least a large private company with multiple shareholders).
- Has a board of directors and a chief executive officer (CEO) who may legally act on behalf of Buyer where permitted, even if this is not specifically required by law.

The transaction involves the following details:

- Mr. James, a director and the majority shareholder of the company, proposes that the company purchase used trucks from another company he owns.
- The price is higher than the going price for used trucks, but the transaction goes forward.
- All required approvals are obtained, and all required disclosures made, though the transaction is prejudicial to Buyer.
- Shareholders sue the interested parties and the members of the board of directors.

### WHAT THE PROTECTING MINORITY INVESTORS INDICATORS MEASURE

#### Extent of disclosure index (0–10)

Review and approval requirements for related-party transactions ; Disclosure requirements for related-party transactions

#### Extent of director liability index (0–10)

Ability of minority shareholders to sue and hold interested directors liable for prejudicial related-party transactions; Available legal remedies (damages, disgorgement of profits, fines, imprisonment, rescission of the transaction)

#### Ease of shareholder suits index (0–10)

Access to internal corporate documents; Evidence obtainable during trial and allocation of legal expenses

#### Extent of conflict of interest regulation index (0–10)

Sum of the extent of disclosure, extent of director liability and ease of shareholder indices, divided by 3

#### Extent of shareholder rights index (0-10.5)

Shareholders' rights and role in major corporate decisions

#### Strength of governance structure index (0-10.5)

Governance safeguards protecting shareholders from undue board control and entrenchment

#### Extent of corporate transparency index (0-9)

Corporate transparency on ownership stakes, compensation, audits and financial prospects

#### Extent of shareholder governance index (0–10)

Sum of the extent of shareholders rights, strength of governance structure and extent of corporate transparency indices, divided by 3

#### Strength of investor protection index (0–10)

Simple average of the extent of conflict of interest regulation and extent of shareholder governance indices

## PROTECTING MINORITY INVESTORS

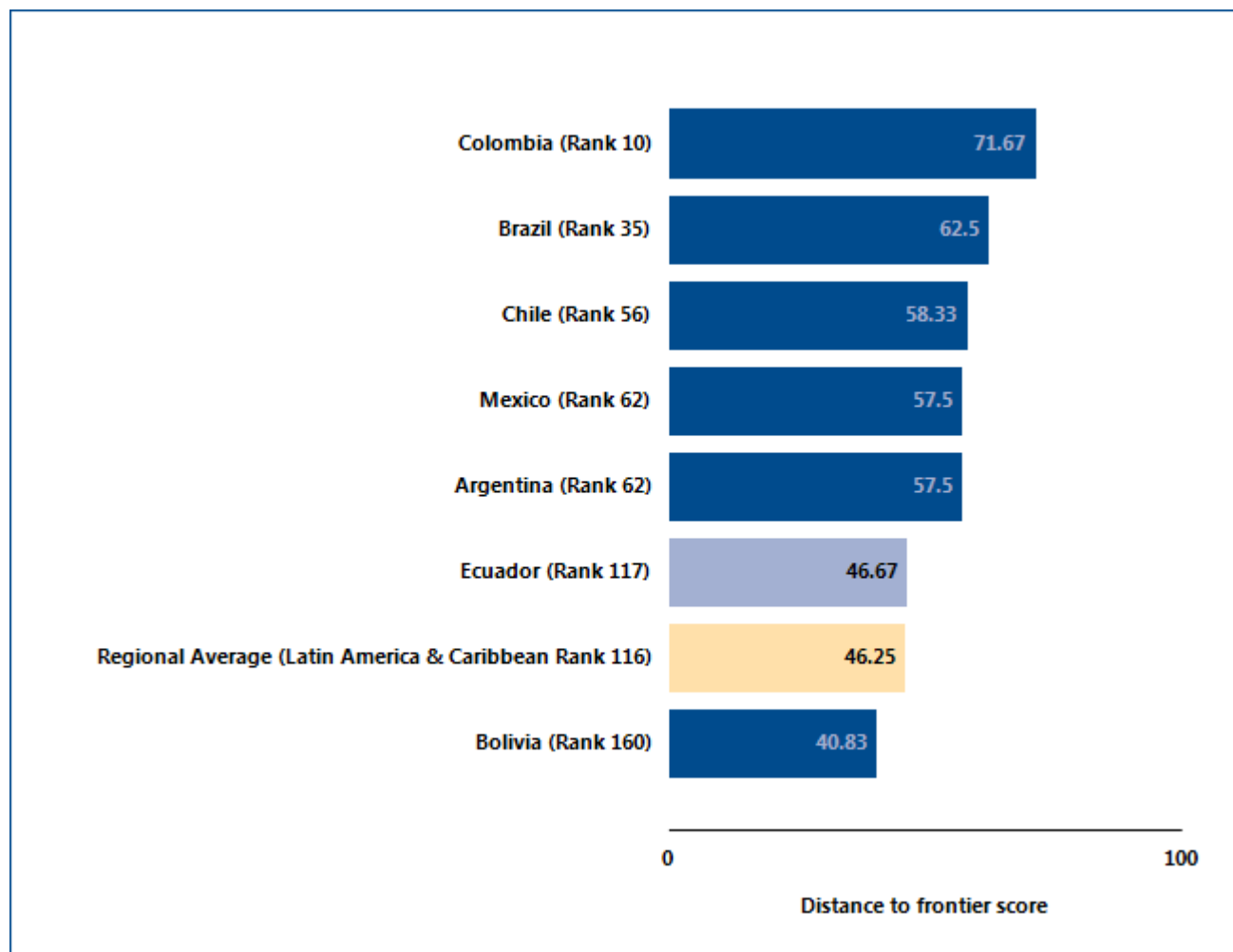
### Where does the economy stand today?

How strong are minority investor protections against self-dealing in Ecuador? The economy has a score of 4.7 on the strength of minority investor protection index, with a higher score indicating stronger protections.

Globally, Ecuador stands at 117 in the ranking of 189 economies on the strength of minority investor

protection index (figure 7.1). While the indicator does not measure all aspects related to the protection of minority investors, a higher ranking does indicate that an economy's regulations offer stronger minority investor protections against self-dealing in the areas measured.

Figure 7.1 How Ecuador and comparator economies perform on the strength of minority investor protection index



Source: Doing Business database.

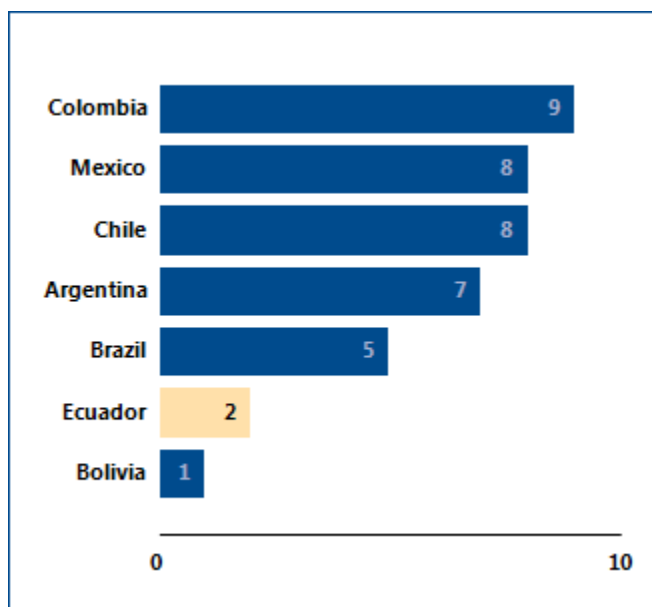
### PROTECTING MINORITY INVESTORS

One way to put an economy's scores on the protecting minority investors indicators into context is to see where the economy stands in the distribution of scores across comparator economies. Figures 7.2 through 7.7 highlight the scores on the various minority investor protection

indices for Ecuador in 2014. A summary of scoring for the protecting minority investors indicators at the end of this chapter provides details on how the indices were calculated.

Figure 7.2 How extensive are disclosure requirements?

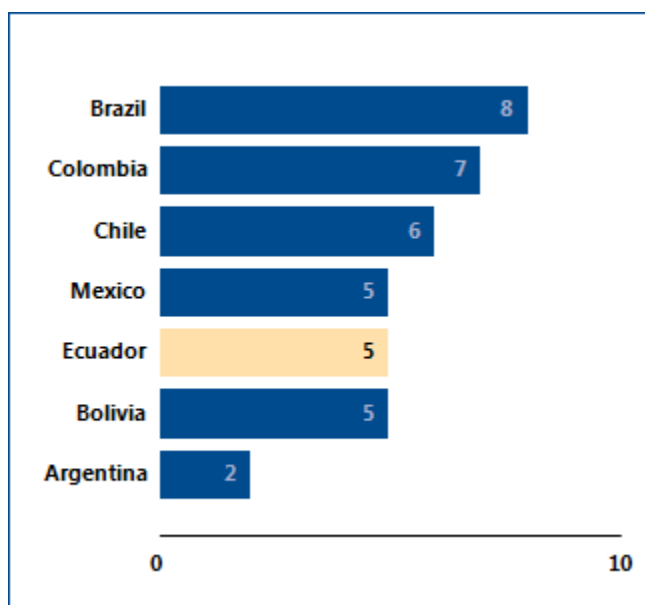
#### Extent of disclosure index (0-10)



Note: Higher scores indicate greater disclosure.  
Source: Doing Business database.

Figure 7.3 How extensive is the liability regime for directors?

#### Extent of director liability index (0-10)

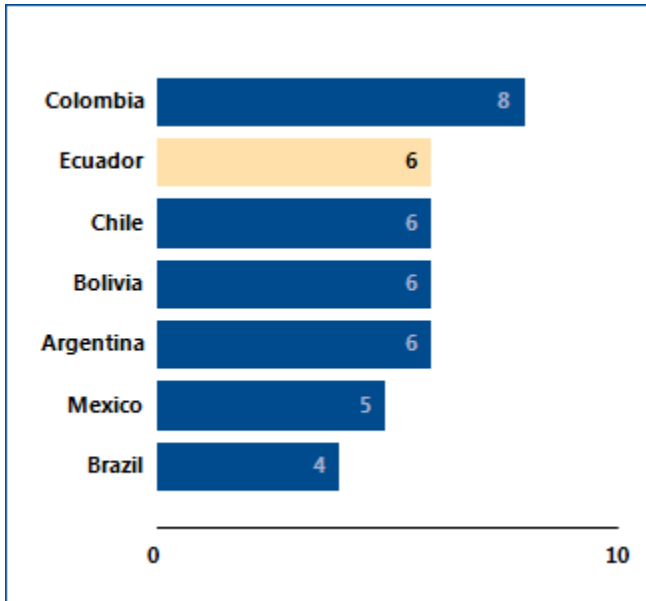


Note: Higher scores indicate greater liability of directors.  
Source: Doing Business database.

## PROTECTING MINORITY INVESTORS

Figure 7.4 How easy is accessing internal corporate documents?

### Ease of shareholder suits index (0-10)



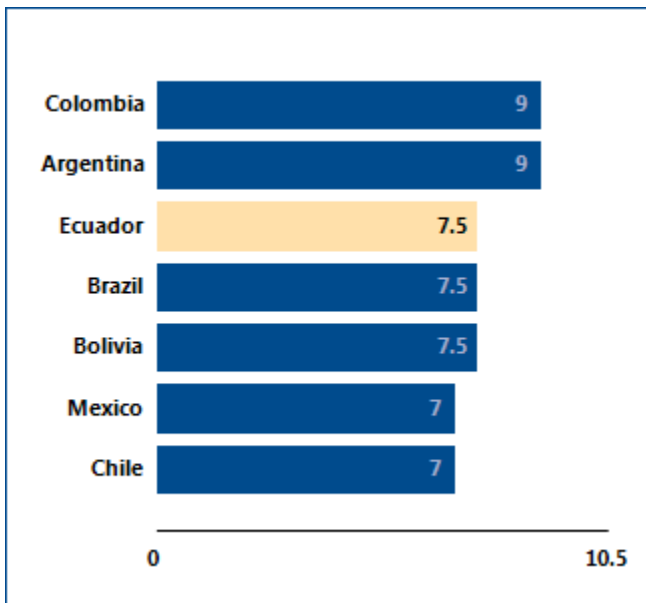
Note: Higher scores indicate greater minority shareholder access to evidence before and during trial.

Source: Doing Business database.

## PROTECTING MINORITY INVESTORS

Figure 7.5 How extensive are shareholder rights?

### Extent of shareholder rights index (0-10.5)

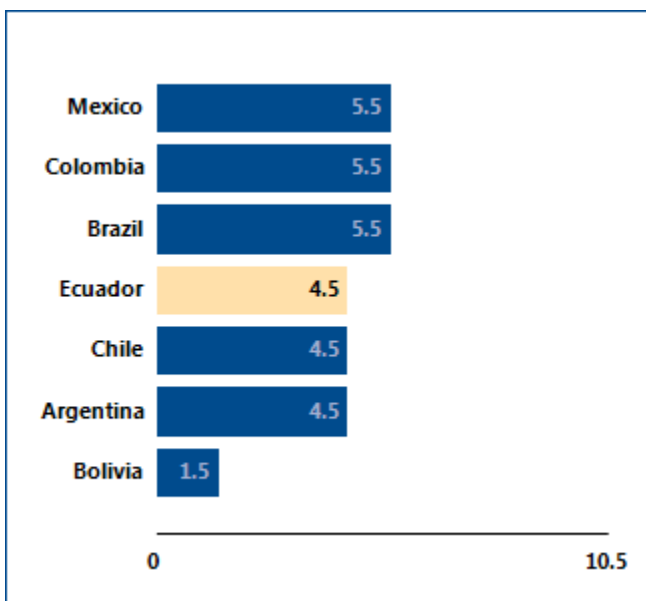


Note: The higher the score, the stronger the protections.

Source: Doing Business database.

Figure 7.6 How strong is the governance structure?

### Strength of governance structure index (0-10.5)

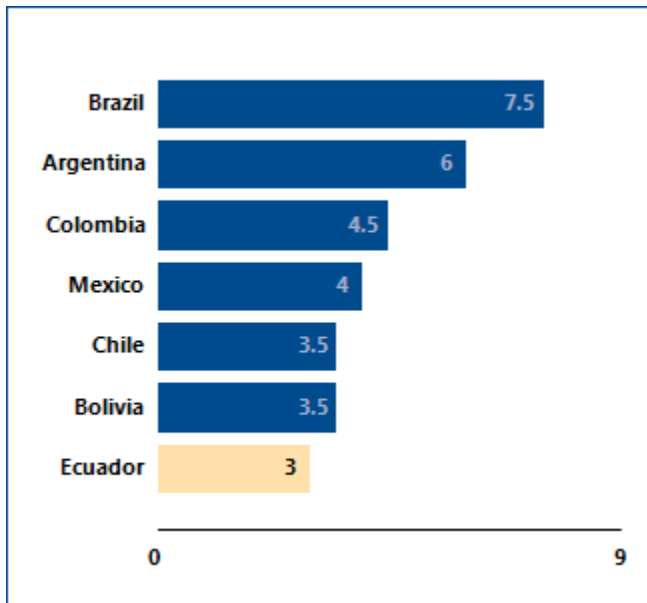


Note: Higher scores indicate more stringent governance structure requirements.

Source: Doing Business database.



Figure 7.7 How extensive is corporate transparency?

**Extent of corporate transparency index (0-9)**

Note: Higher scores indicate greater transparency.  
Source: Doing Business database.

## PROTECTING MINORITY INVESTORS

Economies with the strongest protections of minority investors from self-dealing require detailed disclosure and define clear duties for directors. They also have well-functioning courts and up-to-date procedural rules that give minority shareholders the means to prove their case and obtain a judgment within a reasonable time. As a

result, reforms to strengthen minority investor protections may move ahead on different fronts—such as through new or amended company laws, securities regulations or civil procedure rules. What minority investor protection reforms has *Doing Business* recorded in Ecuador (table 7.1)?

Table 7.1 How has Ecuador strengthened minority investor protections—or not?  
By *Doing Business* report year from DB2010 to DB2015

DB year	Reform
<b>DB2015</b>	Ecuador strengthened minority investor protections by introducing greater requirements for disclosure of related-party transactions as well as a requirement that a potential acquirer make a tender offer to all shareholders upon acquiring voting shares.

*Note:* For information on reforms in earlier years (back to DB2006), see the *Doing Business* reports for these years, available at <http://www.doingbusiness.org>.  
*Source:* *Doing Business* database.

## PROTECTING MINORITY INVESTORS

### What are the details?

The protecting minority investors indicators reported here for Ecuador are based on detailed information collected through a survey of corporate and securities lawyers about securities regulations, company laws and court rules of evidence and procedure. To construct the six indicators on minority investor protection, scores are assigned to each based on a range of conditions relating

to disclosure, director liability, shareholder suits, shareholder rights, governance structure and corporate transparency in a standard case study (for more details, see the Data Notes section of the *Doing Business 2015* report). The summary below shows the details underlying the scores for Ecuador.

Table 7.2 Summary of scoring for the protecting minority investors indicators in Ecuador

	Answer	Score
<b>Extent of disclosure index (0-10)</b>		2.0
Which corporate body can provide legally sufficient approval for the Buyer-Seller transaction? (0-3)	CEO alone	0
Is disclosure by the interested director to the board of directors required? (0-2)	No disclosure obligation	0
Is disclosure of the transaction in published periodic filings (annual reports) required? (0-2)	Disclosure on the transaction only	1
Is immediate disclosure of the transaction to the public and/or shareholders required? (0-2)	Disclosure on the transaction only	1
Must an external body review the terms of the transaction before it takes place? (0-1)	No	0
<b>Extent of director liability index (0-10)</b>		5.0
Can shareholders sue directly or derivatively for the damage caused by the Buyer-Seller transaction to the company? (0-1)	Yes	1
Can shareholders hold the interested director liable for the damage caused by the transaction to the company? (0-2)	Liable if negligent	1
Can shareholders hold members of the approving body liable for the damage caused by the transaction to the company? (0-2)	Liable if negligent	1
Must the interested director pay damages for the harm caused to the company upon a successful claim by a shareholder plaintiff? (0-1)	Yes	1
Must the interested director repay profits made from the transaction upon a successful claim by a shareholder plaintiff? (0-1)	No	0
Can both fines and imprisonment be applied against the interested director? (0-1)	Yes	1
Can a court void the transaction upon a successful claim by a shareholder plaintiff? (0-2)	Only in case of fraud or bad faith	0
<b>Ease of shareholder suits index (0-10)</b>		6.0
Before filing suit, can shareholders owning 10% of the company's share capital inspect the transaction documents? (0-1)	Yes	1
Can the plaintiff obtain any documents from the defendant	No	3

and witnesses during trial? (0-3)		
Can the plaintiff request categories of documents from the defendant without identifying specific ones? (0-1)	No	0
Can the plaintiff directly question the defendant and witnesses during trial? (0-2)	No	1
Is the level of proof required for civil suits lower than that of criminal cases? (0-1)	No	0
Can shareholder plaintiffs recover their legal expenses from the company? (0-2)	Yes if successful	1
<b>Strength of minority investor protection index (0-10)</b>		4.7
<b>Extent of conflict of interest regulation index (0-10)</b>		4.3
<b>Extent of shareholder rights index (0-10.5)</b>		7.5
Can shareholders amend company bylaws or statutes with a simple majority?	Yes	1.5
Can shareholders owning 10% of the company's share capital call for an extraordinary meeting of shareholders?	No	0
Can shareholders remove members of the board of directors before the end of their term.	Yes	1.5
Must a company obtain its shareholders' approval every time it issues new shares?	Yes	1.5
Are shareholders automatically granted subscription rights on new shares?	Yes	1.5
Must shareholders approve the election and dismissal of the external auditor?	Yes	1.5
Can shareholders freely trade shares prior to a major corporate action or meeting of shareholders?	No	0
<b>Strength of governance structure index (0-10.5)</b>		4.5
Is the CEO barred from also serving as chair of the board of directors?	Yes	1.5
Must the board of directors include independent board members?	No	0
Must a company have a separate audit committee?	Yes	1.5
Must changes to the voting rights of a series or class of shares be approved only by the holders of the affected shares?	Yes	1.5
Must a potential acquirer make a tender offer to all shareholders upon acquiring 50% of a company?	Yes	1.5
Is cross-shareholding between 2 independent companies limited to 10% of outstanding shares?	No	0
Is a subsidiary barred from acquiring shares issued by its parent company?	Yes	1.5
<b>Extent of corporate transparency index (0-9)</b>		3.0
Must ownership stakes representing 10% be disclosed?	No	0
Must information about board members' other directorships as well as basic information on their primary employment be disclosed?	No	0
Must the compensation of individual managers be disclosed?	No	0
Must financial statements contain explanatory notes on significant accounting policies, trends, risks, uncertainties and other factors influencing the reporting?	Yes	1.5
Must annual financial statements be audited by an external	Yes	1.5

auditor?		
Must audit reports be disclosed to the public?	No	0
<b>Extent of shareholder governance index (0-10)</b>		5.0

Source: *Doing Business* database.

## PAYING TAXES

Taxes are essential. The level of tax rates needs to be carefully chosen—and needless complexity in tax rules avoided. Firms in economies that rank better on the ease of paying taxes in the *Doing Business* study tend to perceive both tax rates and tax administration as less of an obstacle to business according to the World Bank Enterprise Survey research.

### What do the indicators cover?

Using a case scenario, *Doing Business* measures the taxes and mandatory contributions that a medium-size company must pay in a given year as well as the administrative burden of paying taxes and contributions. This case scenario uses a set of financial statements and assumptions about transactions made over the year. Information is also compiled on the frequency of filing and payments as well as time taken to comply with tax laws. The ranking of economies on the ease of paying taxes is determined by sorting their distance to frontier scores on the ease of paying taxes. These scores are the simple average of the distance to frontier scores for each of the component indicators, with a threshold and a nonlinear transformation applied to one of the component indicators, the total tax rate<sup>5</sup>. The financial statement variables have been updated to be proportional to 2012 income per capita; previously they were proportional to 2005 income per capita. To make the data comparable across economies, several assumptions are used.

- TaxpayerCo is a medium-size business that started operations on January 1, 2012.
- The business starts from the same financial position in each economy. All the taxes and mandatory contributions are recorded at all levels of government.

<sup>5</sup> The nonlinear distance to frontier for the total tax rate is equal to the distance to frontier for the total tax rate if the total tax rate is greater than the threshold and equal to the threshold if the total tax rate is less than the threshold. The threshold is defined as the total tax rate of the 15th percentile of the distribution for all economies included in the analysis. It is calculated and adjusted on a yearly basis. The second year of operation is recorded. A range of standard deductions and exemptions are also recorded. Instead, it is mainly empirical in nature, set at the lower end of the distribution of tax rates. Taxes and mandatory contributions are recorded at all levels of government. The *Doing Business* standardized case study company because they raise public revenue in other ways—for example, through taxes on foreign companies, through taxes on sectors other than manufacturing or from natural resources (all of which are outside the scope of the methodology). This year's threshold is 26.1%.

### WHAT THE PAYING TAXES INDICATORS MEASURE

#### Tax payments for a manufacturing company in 2013 (number per year adjusted for electronic and joint filing and payment)

Total number of taxes and contributions paid, including consumption taxes (value added tax, sales tax or goods and service tax)

Method and frequency of filing and payment

#### Time required to comply with 3 major taxes (hours per year)

Collecting information and computing the tax payable

Completing tax return forms, filing with proper agencies

Arranging payment or withholding

Preparing separate tax accounting books, if required

#### Total tax rate (% of profit before all taxes)

Profit or corporate income tax

Social contributions and labor taxes paid by the employer

Property and property transfer taxes

Dividend, capital gains and financial transactions taxes

Waste collection, vehicle, road and other taxes

- Taxes and mandatory contributions include corporate income tax, turnover tax and all labor taxes and contributions paid by the company.

- A range of standard deductions and exemptions are also recorded.

## PAYING TAXES

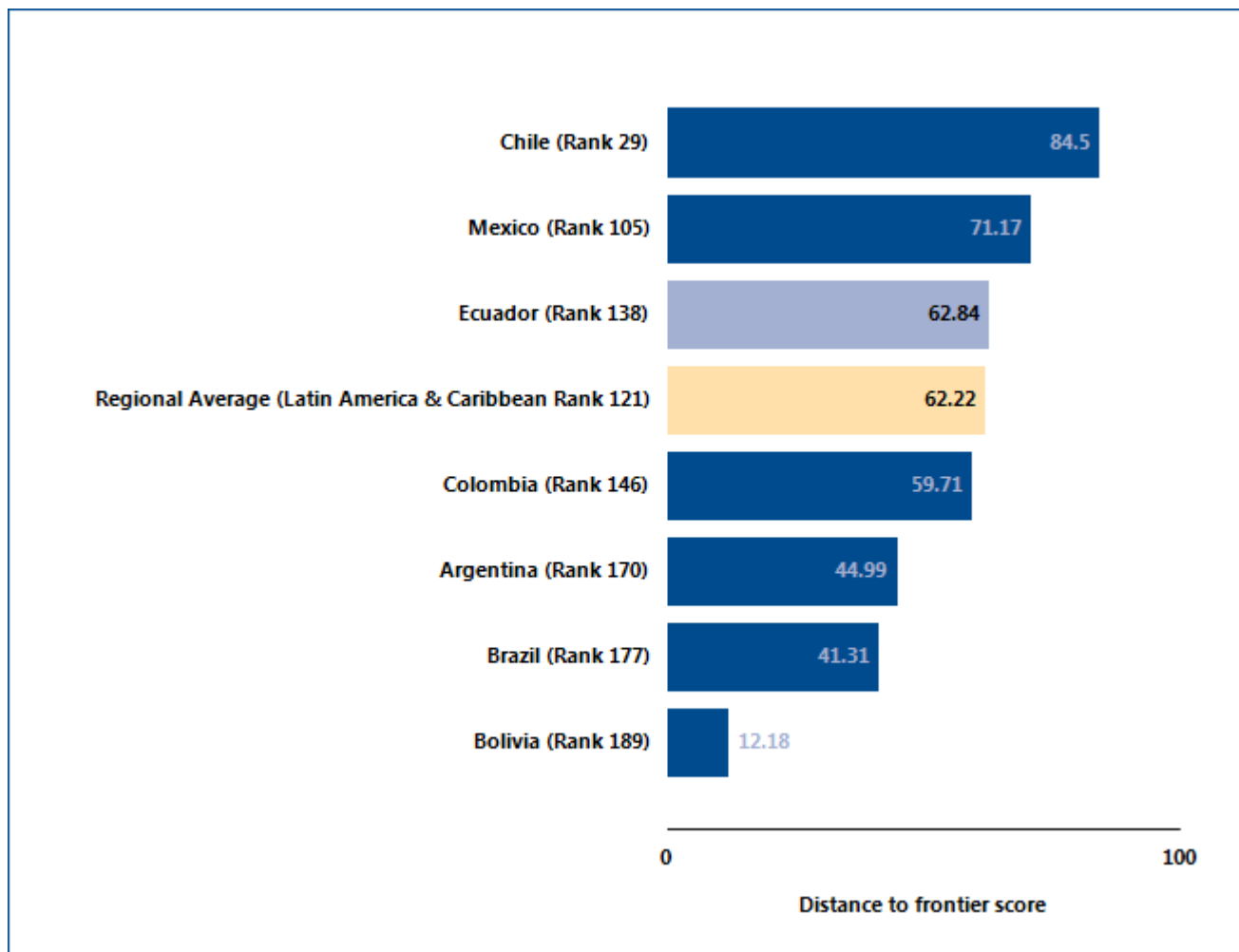
### Where does the economy stand today?

What is the administrative burden of complying with taxes in Ecuador—and how much do firms pay in taxes? On average, firms make 8.0 tax payments a year, spend 654.0 hours a year filing, preparing and paying taxes and pay total taxes amounting to 33.0% of profit (see the summary at the end of this chapter for details). Most indicator sets refer to a case scenario in the largest business city of an economy, except for 11 economies for which the data are a population-weighted average of the

2 largest business cities. See the chapter on distance to frontier and ease of doing business ranking at the end of this profile for more details.

Globally, Ecuador stands at 138 in the ranking of 189 economies on the ease of paying taxes (figure 8.1). The rankings for comparator economies and the regional average ranking provide other useful information for assessing the tax compliance burden for businesses in Ecuador.

Figure 8.1 How Ecuador and comparator economies rank on the ease of paying taxes



Source: Doing Business database.

## PAYING TAXES

### What are the details?

The indicators reported here for Ecuador are based on the taxes and contributions that would be paid by a standardized case study company used by *Doing Business* in collecting the data (see the section in this chapter on what the indicators cover). Tax practitioners are asked to review a set of financial statements as well as a standardized list of assumptions and transactions that the company completed during its 2nd year of operation. Respondents are asked how much taxes and mandatory contributions the business must pay and how these taxes are filed and paid.

#### LOCATION OF STANDARDIZED COMPANY

City: Quito

The taxes and contributions paid are listed in the summary below, along with the associated number of payments, time and tax rate.

Table 8.2 Summary of tax rates and administration

Tax or mandatory contribution	Payments (number)	Notes on payments	Time (hours)	Statutory tax rate	Tax base	Total tax rate (% of profit)	Notes on total tax rate
Corporate income tax	1	online filing	108	22%	taxable profit	15.6	
Employer paid - Social security contributions	1	online filing	306	12.15%	gross salaries	13.7	
Patent tax	1	online filing	0		fixed fee	2.1	
Capital gains tax (property transfer tax)	1		0	10%	capital gains	0.5	
Contribution to superintendence	1		0	0%-0.85%	total assets	0.5	
Municipal assets tax	1		0	0.15%	total assets	0.4	
Vehicle tax	1		0	2.5%	vehicle value	0.1	
Employee paid - Social security contributions	0	paid jointly	0	9.35%	gross salaries	0	withheld
Value added tax (VAT)	1	online filing	240	12%	value added	0	not included
Totals	8.0		654.0			33.0	

Source: *Doing Business* database.

## TRADING ACROSS BORDERS

In today's globalized world, making trade between economies easier is increasingly important for business. Excessive document requirements, burdensome customs procedures, inefficient port operations and inadequate infrastructure all lead to extra costs and delays for exporters and importers, stifling trade potential. Research shows that exporters in developing countries gain more from a 10% drop in their trading costs than from a similar reduction in the tariffs applied to their products in global markets.

### What do the indicators cover?

*Doing Business* measures the time and cost (excluding tariffs and the time and cost for sea transport) associated with exporting and importing a standard shipment of goods by sea transport, and the number of documents necessary to complete the transaction. The indicators cover predefined stages such as documentation requirements and procedures at customs and other regulatory agencies as well as at the port. They also cover trade logistics, including the time and cost of inland transport to the largest business city. The ranking of economies on the ease of trading across borders is determined by sorting their distance to frontier scores for trading across borders. These scores are the simple average of the distance to frontier scores for each of the component indicators. To make the data comparable across economies, *Doing Business* uses several assumptions about the business and the traded goods.

The business:

- Is located in the economy's largest business city. For the 11 economies with a population of more than 100 million, data for a second city have been added.
- Is a private, limited liability company, domestically owned and does not operate with special export or import privileges.
- Conducts export and import activities, but does not have any special accreditation such as an authorized economic operator status.

### WHAT THE TRADING ACROSS BORDERS INDICATORS MEASURE

#### Documents required to export and import (number)

- Bank documents
- Customs clearance documents
- Port and terminal handling documents
- Transport documents

#### Time required to export and import (days)

- Obtaining, filling out and submitting all the documents
- Inland transport and handling
- Customs clearance and inspections
- Port and terminal handling
- Does not include sea transport time

#### Cost required to export and import (US\$ per container)

- All documentation
- Inland transport and handling
- Customs clearance and inspections
- Port and terminal handling
- Official costs only, no bribes

The traded product:

- Is not hazardous nor includes military items.
- Does not require refrigeration or any other special environment.
- Do not require any special phytosanitary or environmental safety standards other than accepted international standards.
- Is one of the economy's leading export or import products.
- Is transported in a dry-cargo, 20-foot full container load.



## TRADING ACROSS BORDERS

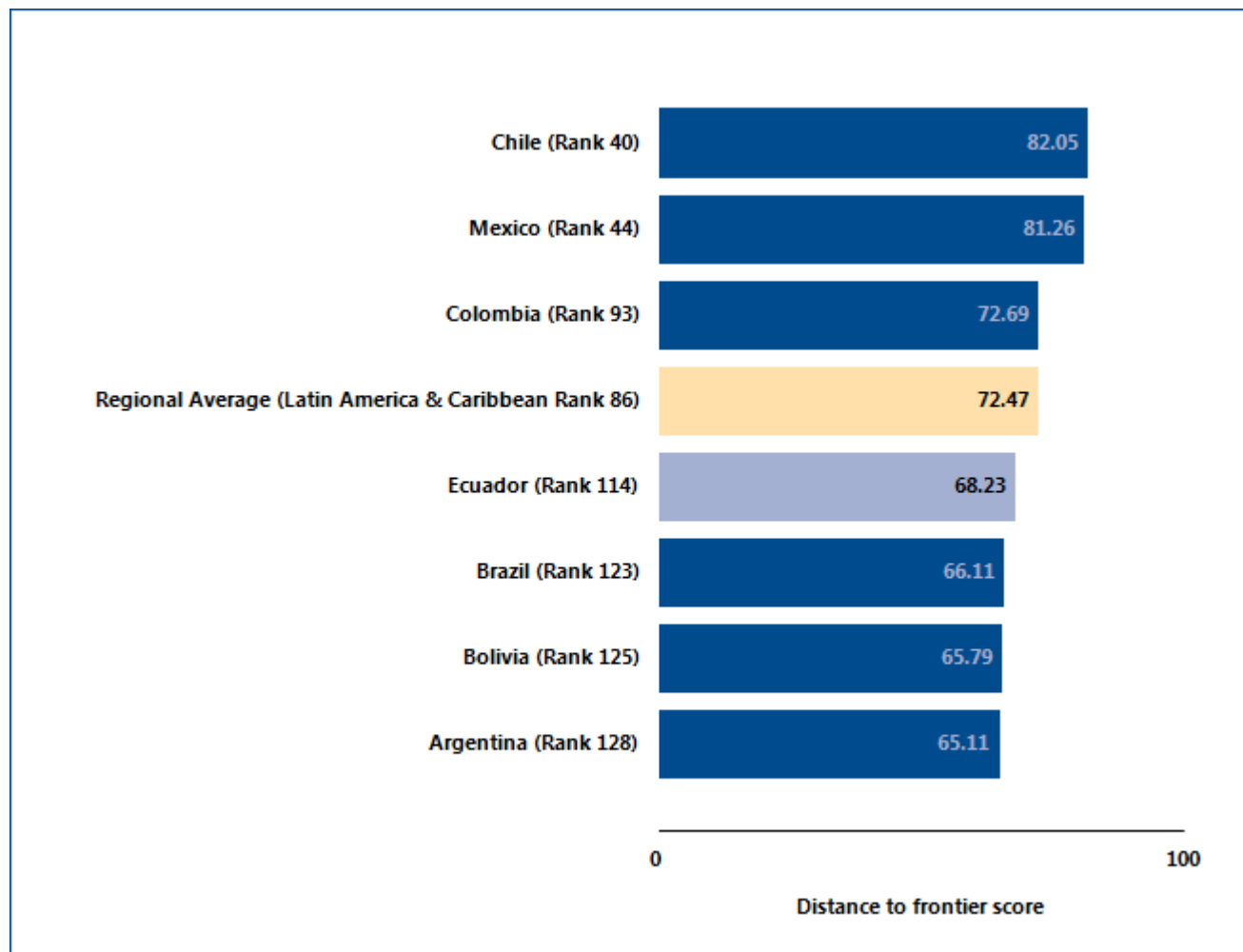
### Where does the economy stand today?

What does it take to export or import in Ecuador? According to data collected by *Doing Business*, exporting a standard container of goods requires 7 documents, takes 19.0 days and costs \$1535.0. Importing the same container of goods requires 6 documents, takes 24.0 days and costs \$1520.0 (see the summary of four predefined stages and documents at the end of this chapter for details). Most indicator sets refer to a case scenario in the largest business city of an economy, except for 11 economies for which the data are a

population-weighted average of the 2 largest business cities. See the chapter on distance to frontier and ease of doing business ranking at the end of this profile for more details.

Globally, Ecuador stands at 114 in the ranking of 189 economies on the ease of trading across borders (figure 9.1). The rankings for comparator economies and the regional average ranking provide other useful information for assessing how easy it is for a business in Ecuador to export and import goods.

Figure 9.1 How Ecuador and comparator economies rank on the ease of trading across borders



Source: *Doing Business* database.

## TRADING ACROSS BORDERS

In economies around the world, trading across borders as measured by *Doing Business* has become faster and easier over the years. Governments have introduced tools to facilitate trade—including single windows, risk-based inspections and electronic data interchange

systems. These changes help improve the trading environment and boost firms' international competitiveness. What trade reforms has *Doing Business* recorded in Ecuador (table 9.1)?

Table 9.1 How has Ecuador made trading across borders easier—or not?  
By *Doing Business* report year from DB2010 to DB2015

DB year	Reform
DB2015	Ecuador made trading across borders easier by introducing a new electronic data interchange system called ECUAPASS.

*Note:* For information on reforms in earlier years (back to DB2006), see the *Doing Business* reports for these years, available at <http://www.doingbusiness.org>.

*Source:* *Doing Business* database.

## TRADING ACROSS BORDERS

### What are the details?

The indicators reported here for Ecuador are based on a set of specific predefined stages for trading a standard shipment of goods by ocean transport (see the section in this chapter on what the indicators cover). Information on the required documents and the time and cost to complete export and import is collected from local freight forwarders, shipping lines, customs brokers, port officials and banks.

#### LOCATION OF STANDARDIZED COMPANY

**Port Name:** Guayaquil

**City:** Quito

The predefined stages, and the associated time and cost, for exporting and importing a standard shipment of goods are listed in the summary below, along with the required documents.

Table 9.2 Summary of predefined stages and documents for trading across borders in Ecuador

Stages to export	Time (days)	Cost (US\$)
Customs clearance and inspections	3	200
Documents preparation	10	375
Inland transportation and handling	4	600
Ports and terminal handling	2	360
Totals	19	1,535

Stages to import	Time (days)	Cost (US\$)
Customs clearance and inspections	3	250
Documents preparation	15	350
Inland transportation and handling	2	600
Ports and terminal handling	4	320
Totals	24	1,520

**Documents to export**

Bill of lading
Commercial invoice
Customs export declaration
Equipment interchange receipt
Insurance certificate
Packing list
Technical standard/health certificate

**Documents to import**

Bill of lading
Cargo release order
Commercial invoice
Customs import declaration
Packing list
Terminal handling receipts

Source: *Doing Business* database.

## ENFORCING CONTRACTS

Effective commercial dispute resolution has many benefits. Courts are essential for entrepreneurs because they interpret the rules of the market and protect economic rights. Efficient and transparent courts encourage new business relationships because businesses know they can rely on the courts if a new customer fails to pay. Speedy trials are essential for small enterprises, which may lack the resources to stay in business while awaiting the outcome of a long court dispute.

*What do the indicators cover?*

*Doing Business* measures the efficiency of the judicial system in resolving a commercial dispute before local courts. Following the step-by-step evolution of a standardized case study, it collects data relating to the time, cost and procedural complexity of resolving a commercial lawsuit. The ranking on the ease of enforcing contracts is the simple average of the percentile rankings on its component indicators: procedures, time and cost.

The dispute in the case study involves the breach of a sales contract between 2 domestic businesses. The case study assumes that the court hears an expert on the quality of the goods in dispute. This distinguishes the case from simple debt enforcement. To make the data comparable across economies, *Doing Business* uses several assumptions about the case:

- The seller and buyer are located in the economy's largest business city. For the 11 economies with a population of more than 100 million, data for a second city have been added.
- The buyer orders custom-made goods, then fails to pay.
- The seller sues the buyer before a competent court.
- The value of the claim is 200% of the income per capita or the equivalent in local currency of USD 5,000, whichever is greater.
- The seller requests a pretrial attachment to secure the claim.
- The dispute on the quality of the goods requires an expert opinion.
- The judge decides in favor of the seller; there is no appeal.
- The seller enforces the judgment through a public sale of the buyer's movable assets.

### WHAT THE ENFORCING CONTRACTS

#### INDICATORS MEASURE

##### Procedures to enforce a contract through the courts (number)

- Steps to file and serve the case
- Steps for trial and judgment
- Steps to enforce the judgment

##### Time required to complete procedures (calendar days)

- Time to file and serve the case
- Time for trial and obtaining judgment
- Time to enforce the judgment

##### Cost required to complete procedures (% of claim)

- Average attorney fees
- Court costs
- Enforcement costs

## ENFORCING CONTRACTS

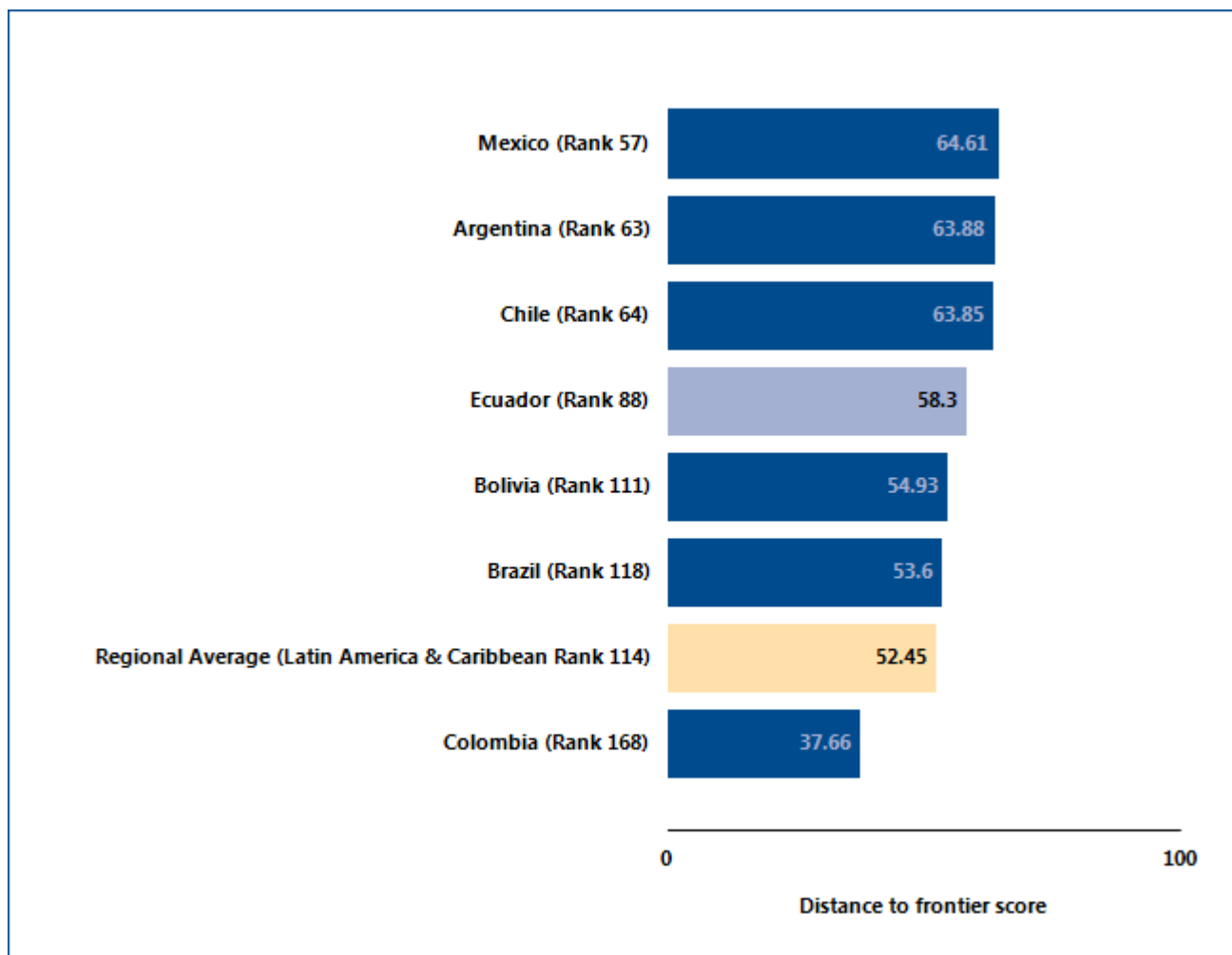
### Where does the economy stand today?

How efficient is the process of resolving a commercial dispute through the courts in Ecuador? According to data collected by *Doing Business*, contract enforcement takes 588.0 days, costs 27.2% of the value of the claim and requires 39.0 procedures (see the summary at the end of this chapter for details). Most indicator sets refer to a case scenario in the largest business city of an economy, except for 11 economies for which the data are a population-weighted average of the 2 largest

business cities. See the chapter on distance to frontier and ease of doing business ranking at the end of this profile for more details.

Globally, Ecuador stands at 88 in the ranking of 189 economies on the ease of enforcing contracts (figure 10.1). The rankings for comparator economies and the regional average ranking provide other useful benchmarks for assessing the efficiency of contract enforcement in Ecuador.

Figure 10.1 How Ecuador and comparator economies rank on the ease of enforcing contracts



Source: *Doing Business* database.

## ENFORCING CONTRACTS

### What are the details?

The indicators reported here for Ecuador are based on a set of specific procedural steps required to resolve a standardized commercial dispute through the courts (see the section in this chapter on what the indicators cover). These procedures, and the time and cost of completing them, are identified through study of the codes of civil procedure and other court regulations, as well as through questionnaires completed by local litigation lawyers (and, in a quarter of the economies covered by *Doing Business*, by judges as well).

COURT NAME	
<b>Claim value:</b>	<b>USD 10,735</b>
<b>Court name:</b>	<b>Quito Civil Court</b>
<b>City:</b>	<b>Quito</b>

Table 10.2 Summary of time, cost and procedures for enforcing a contract in Ecuador

Indicator	Ecuador	Latin America & Caribbean average
<b>Time (days)</b>	588	737
Filing and service	38	
Trial and judgment	455	
Enforcement of judgment	95	
<b>Cost (% of claim)</b>	27.2	30.6
Attorney cost (% of claim)	15.0	
Court cost (% of claim)	5.0	
Enforcement Cost (% of claim)	7.2	
<b>Procedures (number)</b>	39	40
Number of procedures (without bonus points)	39	
Total number of procedures (including bonus points)	39	

No.	Procedures
	Filing and service:
1	Plaintiff hires a lawyer: Plaintiff hires a lawyer.
*	Plaintiff files a summons and complaint: Plaintiff files a summons and complaint with the court (orally or in writing).
*	Plaintiff pays court fees: Plaintiff pays court fees (e.g. court duties, stamp duties, or any other type of court fees). Answer 'yes' even if Plaintiff recovers these costs.
2	Registration of court case: Registration of court case by the court administration (this can include assigning a reference number to the case).
*	Assignment of court case to a judge: Assignment of court case to a judge (through a random procedure, automated system, ruling of an administrative judge, court officer, etc).
3	Judicial scrutiny of summons and complaint: Judge examines Plaintiff's summons and complaint for formal requirements as a matter of law or standard practice.
*	Judge admits summons and complaint: Judge admits summons and complaint (after verifying the formal requirements).
4	Plaintiff requests service of process on Defendant: Plaintiff requests in writing to the court for an order that process be served on Defendant.
5	Court order for service: Upon Plaintiff's request, judge orders process be served on Defendant.
6	Delivery of summons and complaint to person authorized to perform service of process on Defendant: The judge or a court officer delivers the summons to a summoning office, officer, or authorized person (including Plaintiff), for service of process on Defendant.
7	Attempt at physical delivery: An attempt to physically deliver summons and complaint to Defendant is made.
8	Second attempt at physical delivery: If a first attempt is not ordinarily successful, a second attempt to physically deliver the summons and complaint to Defendant is required by law or standard practice. (Check 'yes' only if a first attempt at physical delivery is not ordinarily successful)
*	Application for pre-judgment attachment: Plaintiff submits an application in writing for the attachment of Defendant's property prior to judgment.
*	Decision on pre-judgment attachment: Judge decides whether to grant Plaintiff's request for pre-judgment attachment of Defendant's property and notifies Plaintiff and Defendant of the decision.
9	Guarantees securing attached property: Plaintiff submits guarantees or bonds to secure Defendant against possible damages to attached property.
10	Pre-judgment attachment order: Defendant's property is attached prior to judgment. Attachment order either involves physical attachment, or is achieved by freezing, registering, marking, or otherwise separating and restricting Defendant's movement of specific moveable assets.



No.	Procedures
11	Custody of assets attached prior to judgment: If physical attachment is ordered, Defendant's attached assets are placed in the custody or control of an enforcement officer or private bailiff.
12	Report on pre-judgment attachment: Court enforcement officer or private bailiff issues and delivers a report on the attachment of Defendant's property to the judge.
13	Hearing on pre-judgment attachment: A hearing takes place as a matter of law or standard practice to resolve the question of whether Defendant's assets can be attached prior to judgment. This process may include the submission of separate summons and petitions.
	Trial and judgment:
14	Defendant's deposit of a bond or payment guarantee with the court: Defendant deposits a bond or guarantee with the court, as required by law or standard practice.
*	Defendant files preliminary objections.: Defendant presents preliminary objections to the court. (Preliminary exemptions differ from answers on the merits. Examples of preliminary motions are motions to dismiss on the basis of the statute of limitations or jurisdictional objections, etc.) Checke
15	Defendant files an answer to Plaintiff's claim: Defendant files a written pleading which includes his answer or defense on the merits of the case (see assumption 4).
*	Court appointment of independent expert: Judge appoints, either at the parties' request or at his own initiative, an independent expert to decide whether the quality of the goods Plaintiff delivered to Defendant is adequate. (see assumption 5-b).
16	Notification of court-appointment of independent expert: The court notifies both parties that the court is appointing an independent expert (see assumption 5-b).
*	Delivery of expert report by court-appointed expert: The independent expert, appointed by the court, delivers his or her expert report to the court (see assumption 5-b).
*	Setting of date for mediation hearing: The judge sets a date for a mediation hearing, sometimes also called a 'pre-trial conference,' and notifies the parties of the hearing date.
17	Mediation hearing: The judge, during this informal meeting with the parties, encourages them to settle the case (acting as mediator). The case cannot be settled, the judge may draft a pre-trial conference report, after which the case may be allocated to another judge for tr
*	List of (expert) witnesses: The parties file a list of (expert) witnesses with the court (see assumption 5-a).
18	Summoning of (expert) witnesses: The court summons (expert) witnesses to appear in court for the oral hearing or trial (see assumption 5-a).
19	Closing of the evidence period: The court makes the formal decision to close the evidence period.
20	Order for submission of final arguments: The judge sets a deadline for the submission of final factual and legal arguments.
*	Final arguments: The parties present their final factual and legal arguments to the court either by oral presentation or by a written submission.
21	Writing of judgment: The judge produces a written copy of the judgment.

No.	Procedures
22	Court notification of availability of the written judgment: The court notifies the parties that the written judgment is available at the courthouse.
23	Plaintiff receives a copy of the judgment: Plaintiff receives a copy of the written judgment which is 100% in favor of Plaintiff (see assumption 6).
24	Defendant is formally notified of the judgment: Plaintiff or court formally notifies the Defendant of the judgment. The appeal period starts to run from the day the Defendant is formally notified of the judgment.
25	Appeal period: By law Defendant has the opportunity to appeal the judgment during a specified period. Defendant decides not to appeal. Seller decides to start enforcing the judgment when the appeal period ends (see assumption 8).
26	Order for reimbursement by Defendant of Plaintiff's court fees: The judgment orders Defendant to reimburse Plaintiff for the court fees Plaintiff has advanced, because Defendant has lost the case.
Enforcement of judgment:	
*	Plaintiff hires a lawyer: Plaintiff hires a lawyer to enforce the judgment or continues to be represented by a lawyer during the enforcement of judgment phase.
27	Plaintiff retains an enforcement agent to enforce the judgment.: Plaintiff retains the services of a court enforcement officer such as a court bailiff or sheriff, or a private bailiff.
*	Plaintiff requests an enforcement order: Plaintiff applies to the court to obtain the enforcement order ('seal' on judgment).
28	Attachment of enforcement order to judgment: The judge attaches the enforcement order ('seal') to the judgment.
*	Delivery of enforcement order: The court's enforcement order is delivered to a court enforcement officer or a private bailiff.
*	Plaintiff's request for physical enforcement: As Plaintiff commonly fears that Defendant might physically resist the taking into custody of its previously attached movable assets, Plaintiff requests the judge or the police authorities to obtain police assistance during the physical enforcement of the
29	Judge's order for physical enforcement: Judge orders the police to assist with the physical enforcement of the attachment of Defendant's movable assets. Check as "yes" only if the pretrial order of attachment for Defendant's moveable assets does not ordinarily involve physical seizure of the as
30	Identification of Defendant's assets by court official or Defendant for purposes of enforcement: The judge, a court enforcement officer, a private bailiff or the Defendant himself identifies Defendant's movable assets for the purposes of enforcing the judgment through a sale of Defendant's assets.
31	Plaintiff identifies Defendant's assets for attachment: Plaintiff identifies Defendant's assets for attachment.
32	Attachment: Defendant's movable goods are attached (physically or by registering, marking or separating assets).
33	Valuation or appraisal of attached movable goods: The court or court-appointed valuation expert evaluates the attached goods.

No.	Procedures
34	Enforcement disputes before court: The enforcement of the judgment is delayed because Defendant opposes aspects of the enforcement process before the judge.
35	Call for public auction: Judge calls a public auction by, for example, advertising or publication in the newspapers.
36	Sale through public auction: The Defendant's movable property is sold at public auction.
37	Judge's decision on bids: Judge determines the adequacy of the bids presented at public auction.
38	Distribution of proceeds: The proceeds of the public auction are distributed to Plaintiff (and, where applicable, to other creditors, according to the rules of priority).
39	Payment: Court orders that the proceeds of the public auction or the direct sale be delivered to Plaintiff.

\* Not counted in the total number of procedures.

Source: *Doing Business* database.

## RESOLVING INSOLVENCY

A robust bankruptcy system functions as a filter, ensuring the survival of economically efficient companies and reallocating the resources of inefficient ones. Fast and cheap insolvency proceedings result in the speedy return of businesses to normal operation and increase returns to creditors. By improving the expectations of creditors and debtors about the outcome of insolvency proceedings, well-functioning insolvency systems can facilitate access to finance, save more viable businesses and thereby improve growth and sustainability in the economy overall.

### What do the indicators cover?

*Doing Business* studies the time, cost and outcome of insolvency proceedings involving domestic legal entities. These variables are used to calculate the recovery rate, which is recorded as cents on the dollar recouped by secured creditors through reorganization, liquidation or debt enforcement (foreclosure) proceedings. To determine the present value of the amount recovered by creditors, *Doing Business* uses the lending rates from the International Monetary Fund, supplemented with data from central banks and the Economist Intelligence Unit.

In addition, *Doing Business* evaluates the adequacy and integrity of the existing legal framework applicable to liquidation and reorganization proceedings through the strength of insolvency framework index. The index tests whether economies adopted internationally accepted good practices in four areas: commencement of proceedings, management of debtor's assets, reorganization proceedings and creditor participation.

The ranking of the Resolving Insolvency indicator is based on the recovery rate and the total score of the strength of insolvency framework index. The Resolving Insolvency indicator does not measure insolvency proceedings of individuals and financial institutions. The data are derived from survey responses by local insolvency practitioners and verified through a study of laws and regulations as well as public information on bankruptcy systems.

### WHAT THE RESOLVING INSOLVENCY INDICATORS MEASURE

#### Time required to recover debt (years)

Measured in calendar years

Appeals and requests for extension are included

#### Cost required to recover debt (% of debtor's estate)

Measured as percentage of estate value

Court fees

Fees of insolvency administrators

Lawyers' fees

Assessors' and auctioneers' fees

Other related fees

#### Outcome

Whether business continues operating as a going concern or business assets are sold piecemeal

#### Recovery rate for creditors

Measures the cents on the dollar recovered by secured creditors

Outcome for the business (survival or not) determines the maximum value that can be recovered

Official costs of the insolvency proceedings are deducted

Depreciation of furniture is taken into account

Present value of debt recovered

#### Strength of insolvency framework index (0-16)

Sum of the scores of four component indices:

Commencement of proceedings index (0-3)

Management of debtor's assets index (0-6)

Reorganization proceedings index (0-3)

Creditor participation index (0-4)

## RESOLVING INSOLVENCY

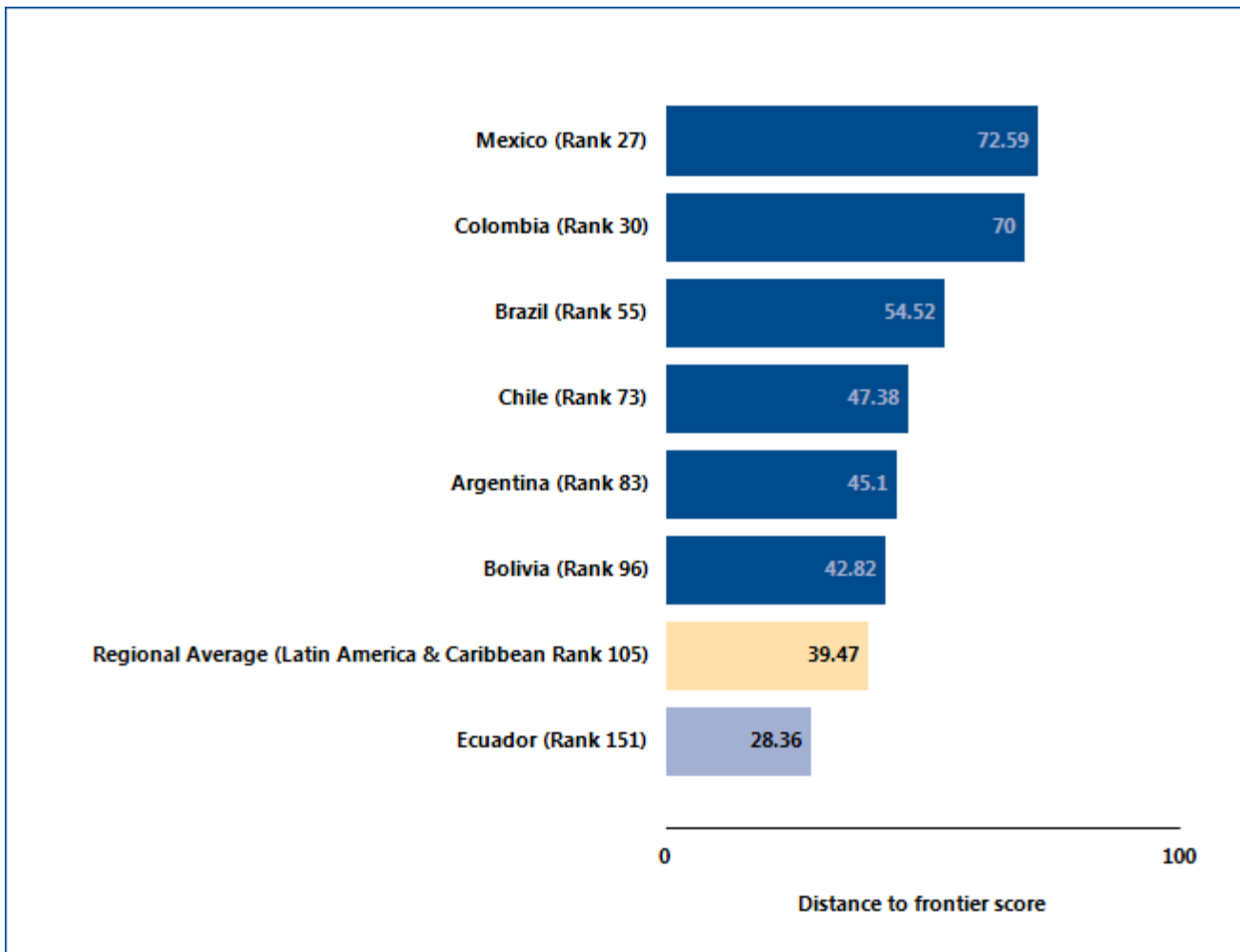
### Where does the economy stand today?

Combination of quality regulations and efficient practice characterize the top-performing economies. How efficient are insolvency proceedings in Ecuador? According to data collected by *Doing Business*, resolving insolvency takes 5.3 years on average and costs 18.0% of the debtor's estate, with the most likely outcome being that the company will be sold as piecemeal sale. The average recovery rate is 17.9 cents on the dollar. Most indicator sets refer to a case scenario in the largest business city of an economy, except for 11 economies for which the data are a population-weighted average of the 2 largest business cities. See the chapter on distance to frontier and ease of doing business ranking at the end of this profile for more details.

According to data collected by *Doing Business*, Ecuador scores 2.0 out of 3 points on the commencement of proceedings index, 2.0 out of 6 points on the management of debtor's assets index, 0.0 out of 3 points on the reorganization proceedings index, and 2.0 out of 4 points on the creditor participation index. Ecuador's total score on the strength of insolvency framework index is 6.0 out of 16.

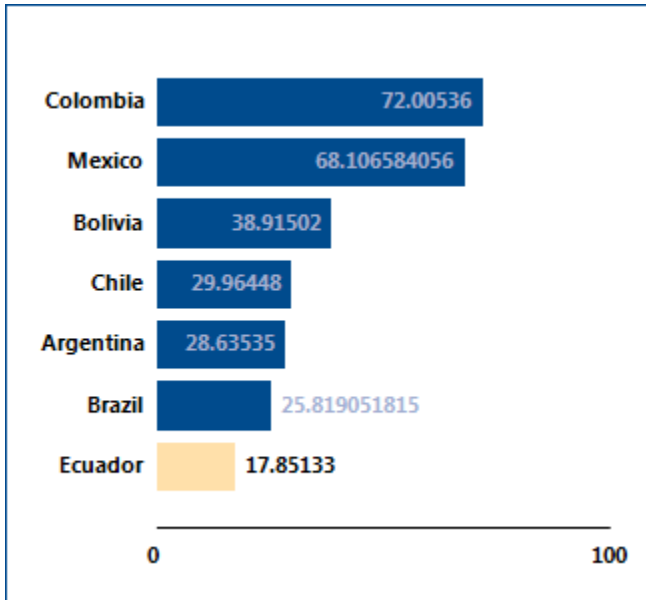
Globally, Ecuador stands at 151 in the ranking of 189 economies on the ease of resolving insolvency (figure 11.1). The rankings for comparator economies and the regional average ranking provide other useful benchmarks for assessing the efficiency of insolvency proceedings in Ecuador.

Figure 11.1 How Ecuador and comparator economies rank on the ease of resolving insolvency



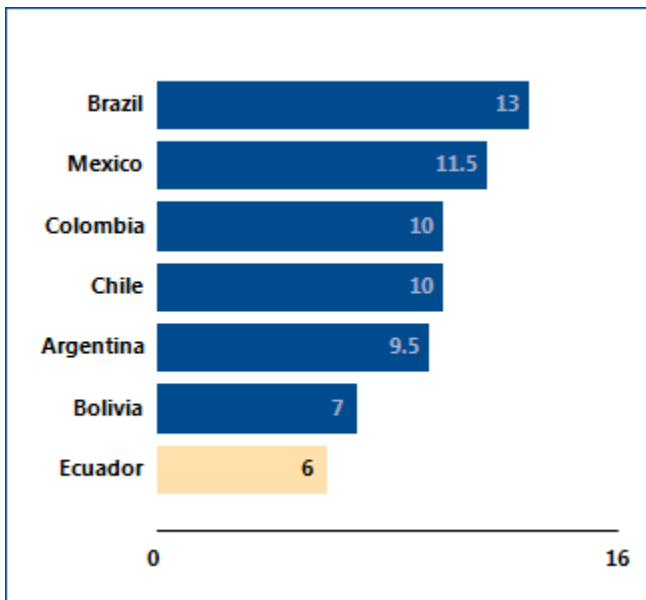
Source: Doing Business database.

Figure 11.2 Recovery Rate (0-100) - Ecuador



Source: Doing Business database.

Figure 11.3 Strength of insolvency framework index (0-16) - Ecuador



Source: Doing Business database.

## LABOR MARKET REGULATION

*Doing Business* measures flexibility in the regulation of employment, specifically as it affects the hiring and redundancy of workers and the rigidity of working hours. This year, for the first time, the indicators measuring flexibility in labor market regulations focus on those affecting the food retail industry, using a standardized case study of a cashier in a supermarket. Also new is that *Doing Business* collects data on regulations applying to employees hired through temporary-work agencies as well as on those applying to permanent employees or employees hired on fixed-term contracts. The indicators also cover additional areas of labor market regulation, including social protection schemes and benefits as well as labor disputes.

Over the period from 2007 to 2011 improvements were made to align the methodology for the labor market regulation indicators (formerly the employing workers indicators) with the letter and spirit of the International Labour Organization (ILO) conventions. Only 6 of the 188 ILO conventions cover areas measured by *Doing Business*: employee termination, weekend work, holiday with pay, night work, protection against unemployment and medical care and sickness benefits. The *Doing Business* methodology is fully consistent with these 6 conventions. The ILO conventions covering areas related to the labor market regulation indicators do not include the ILO core labor standards—8 conventions covering the right to collective bargaining, the elimination of forced labor, the abolition of child labor and equitable treatment in employment practices.

Between 2009 and 2011 the World Bank Group worked with a consultative group—including labor lawyers, employer and employee representatives, and experts from the ILO, the Organisation for Economic Co-operation and Development (OECD), civil society and the private sector—to review the methodology for the labor market regulation indicators and explore future areas of research.

A full report with the conclusions of the consultative group is available at:  
<http://www.doingbusiness.org/methodology/employing-workers>.

*Doing Business 2015* presents the data for the labor market regulation indicators in an annex. The report does not present rankings of economies on these indicators nor include the topic in the aggregate distance to frontier score or ranking on the ease of doing business. Detailed data collected on labor market regulations are available on the *Doing Business* website (<http://www.doingbusiness.org>). The data on labor market regulations are based on a detailed survey of employment regulations that is completed by local lawyers and public officials. Employment laws and regulations as well as secondary sources are reviewed to ensure accuracy. To make the data comparable across economies, several assumptions about the worker and the business are used.

The worker:

- Is a cashier in a supermarket or a grocery store
- Is a full-time employee
- Is not a member of the labor union, unless membership is mandatory

The business:

- Is a limited liability company (or the equivalent in the economy) with 60 employees.
- Operates a supermarket or grocery store in the economy's largest business city. For 11 economies the data are also collected for the second largest business city.
- Is subject to collective bargaining agreements if such agreements cover more than 50% of the food retail sector and they apply even to firms that are not party to them.
- Abides by every law and regulation but does not grant workers more benefits than those mandated by law, regulation or (if applicable) collective bargaining agreements.



## LABOR MARKET REGULATION

### What are the details?

The data reported here for Ecuador are based on a detailed survey of labor market regulation that is completed by local lawyers and public officials.

Employment laws and regulations as well as secondary sources are reviewed to ensure accuracy.

#### Difficulty of hiring index

Difficulty of hiring covers 4 areas: (i) whether fixed-term contracts are prohibited for permanent tasks; (ii) the maximum cumulative duration of fixed-term contracts; (iii) the minimum wage for a cashier, age 19, with 1 year of work experience; and (iv) the ratio of the minimum

wage to the average value added per worker. The average value added per worker is the ratio of an economy's GNI per capita to the working-age population as a percentage of the total population.

Difficulty of hiring index	Data
Fixed-term contracts prohibited for permanent tasks?	No
Maximum length of a single fixed-term contract (months)	24
Maximum length of fixed-term contracts, including renewals (months)	24
Minimum wage applicable to the worker assumed in the case study (US\$/month)	388.02
Ratio of minimum wage to value added per worker	0.54

Source: *Doing Business* database.

## LABOR MARKET REGULATION

### Rigidity of hours index

Rigidity of hours covers 7 areas: (i) whether the workweek can extend to 50 hours or more (including overtime) for 2 months in a year to respond to a seasonal increase in workload; (ii) the maximum number of days allowed in the workweek; (iii) the premium for night work (as a percentage of hourly pay); (iv) the premium for work on a weekly rest day (as a percentage of hourly pay); (v) whether there are restrictions on night work; (vi) whether there are restrictions on weekly holiday work; and (vii) the average paid annual leave for workers with 1 year of tenure, 5 years of tenure and 10 years of tenure.

Rigidity of hours index	Data
50-hour workweek allowed for 2 months a year in case of a seasonal increase in workload?	Yes
Maximum working days per week	5.0
Premium for night work (% of hourly pay)	25%
Premium for work on weekly rest day (% of hourly pay)	100%
Major restrictions on night work?	No
Major restrictions on weekly holiday?	No
Paid annual leave for a worker with 1 year of tenure (in working days)	11.0
Paid annual leave for a worker with 5 years of tenure (in working days)	11.0
Paid annual leave for a worker with 10 years of tenure (in working days)	14.0
Paid annual leave (average for workers with 1, 5 and 10 years of tenure, in working days)	12.0

Source: *Doing Business* database.

## LABOR MARKET REGULATION

### Difficulty of redundancy index

Difficulty of redundancy index looks at 9 questions: (i) what the length is in months of the maximum probationary period; (ii) whether redundancy is disallowed as a basis for terminating workers; (iii) whether the employer needs to notify a third party (such as a government agency) to terminate 1 redundant worker; (iv) whether the employer needs to notify a third party to terminate a group of 9 redundant workers; (v)

whether the employer needs approval from a third party to terminate 1 redundant worker; (vi) whether the employer needs approval from a third party to terminate a group of 9 redundant workers; (vii) whether the law requires the employer to reassign or retrain a worker before making the worker redundant; (viii) whether priority rules apply for redundancies; and (ix) whether priority rules apply for reemployment.

Difficulty of redundancy index	Data
Maximum length of probationary period (months)	3.0
Dismissal due to redundancy allowed by law?	Yes
Third-party notification if 1 worker is dismissed?	Yes
Third-party approval if 1 worker is dismissed?	No
Third-party notification if 9 workers are dismissed?	Yes
Third-party approval if 9 workers are dismissed?	No
Retraining or reassignment obligation before redundancy?	No
Priority rules for redundancies?	No
Priority rules for reemployment?	No

Source: *Doing Business* database.

## LABOR MARKET REGULATION

### Redundancy cost

Redundancy cost measures the cost of advance notice requirements, severance payments and penalties due when terminating a redundant worker, expressed in weeks of salary. The average value of notice

requirements and severance payments applicable to a worker with 1 year of tenure, a worker with 5 years and a worker with 10 years is considered. One month is recorded as 4 and 1/3 weeks.

Redundancy cost indicator (in salary weeks)	Data
Notice period for redundancy dismissal for a worker with 1 year of tenure	0.0
Notice period for redundancy dismissal for a worker with 5 years of tenure	0.0
Notice period for redundancy dismissal for a worker with 10 years of tenure	0.0
Notice period for redundancy dismissal (average for workers with 1, 5 and 10 years of tenure)	0.0
Severance pay for redundancy dismissal for a worker with 1 year of tenure	14.1
Severance pay for redundancy dismissal for a worker with 5 years of tenure	27.1
Severance pay for redundancy dismissal for a worker with 10 years of tenure	54.2
Severance pay for redundancy dismissal (average for workers with 1, 5 and 10 years of tenure)	31.8

Source: *Doing Business* database.

### Social protection schemes and benefits & Labor disputes

*Doing Business* collects data on the existence of unemployment protection schemes as well as data on whether employers are legally required to provide health insurance for employees with permanent contracts.

*Doing Business* also assesses the mechanisms available to resolve labor disputes. More specifically, it collects data on what courts would be competent to hear labor disputes and whether the competent court is specialized in resolving labor disputes.

Social protection schemes and benefits & Labor disputes indicator	Data
Availability of unemployment protection scheme?	No
Health insurance existing for permanent employees?	Yes
Availability of courts or court sections specializing in labor disputes?	Yes

Source: *Doing Business* database.



## DISTANCE TO FRONTIER AND EASE OF DOING BUSINESS RANKING

This year's report presents results for 2 aggregate measures: the distance to frontier score and the ease of doing business ranking, which for the first time this year is based on the distance to frontier score. The ease of doing business ranking compares economies with one another; the distance to frontier score benchmarks economies with respect to regulatory best practice, showing the absolute distance to the best performance on each *Doing Business* indicator. When compared across years, the distance to frontier score shows how much the regulatory environment for local entrepreneurs in an economy has changed over time in absolute terms, while the ease of doing business ranking can show only how much the regulatory environment has changed relative to that in other economies.

### Distance to Frontier

The distance to frontier score captures the gap between an economy's performance and a measure of best practice across the entire sample of 31 indicators for 10 *Doing Business* topics (the labor market regulation indicators are excluded). For starting a business, for example, Canada and New Zealand have the smallest number of procedures required (1), and New Zealand the shortest time to fulfill them (0.5 days). Slovenia has the lowest cost (0.0), and Australia, Colombia and 110 other economies have no paid-in minimum capital requirement (table 15.1 in the *Doing Business 2015* report).

#### Calculation of the distance to frontier score

Calculating the distance to frontier score for each economy involves 2 main steps. First, individual component indicators are normalized to a common unit where each of the 31 component indicators  $y$  (except for the total tax rate) is rescaled using the linear transformation  $(\text{worst} - y)/(\text{worst} - \text{frontier})$ . In this formulation the frontier represents the best performance on the indicator across all economies since 2005 or the third year after data for the indicator were collected for the first time. For legal indicators such as those on getting credit or protecting minority investors, the frontier is set at the highest possible value. For the total tax rate, consistent with the use of a threshold in calculating the rankings on this indicator, the frontier is

defined as the total tax rate at the 15th percentile of the overall distribution for all years included in the analysis. For the time to pay taxes the frontier is defined as the lowest time recorded among all economies that levy the 3 major taxes: profit tax, labor taxes and mandatory contributions, and value added tax (VAT) or sales tax. In addition, the cost to export and cost to import for each year are divided by the GDP deflator, to take the general price level into account when benchmarking these absolute-cost indicators across economies with different inflation trends. The base year for the deflator is 2013 for all economies.

In the same formulation, to mitigate the effects of extreme outliers in the distributions of the rescaled data for most component indicators (very few economies need 700 days to complete the procedures to start a business, but many need 9 days), the worst performance is calculated after the removal of outliers. The definition of outliers is based on the distribution for each component indicator. To simplify the process, 2 rules were defined: the 95th percentile is used for the indicators with the most dispersed distributions (including time, cost, minimum capital and number of payments to pay taxes), and the 99th percentile is used for number of procedures and number of documents to trade. No outlier was removed for component indicators bound by definition or construction, including legal index scores (such as the depth of credit information index, extent of conflict of interest regulation index and strength of insolvency framework index) and the recovery rate (figure 15.1 in the *Doing Business 2015* report).

Second, for each economy the scores obtained for individual indicators are aggregated through simple averaging into one distance to frontier score, first for each topic and then across all 10 topics: starting a business, dealing with construction permits, getting electricity, registering property, getting credit, protecting minority investors, paying taxes, trading across borders, enforcing contracts and resolving insolvency. More complex aggregation methods—such as principal components and unobserved components—yield a ranking nearly identical to the simple average used by *Doing Business*<sup>6</sup>. Thus *Doing Business* uses the simplest

<sup>6</sup> See Djankov, Manraj and others (2005). Principal components and unobserved components methods yield a ranking nearly identical to

method: weighting all topics equally and, within each topic, giving equal weight to each of the topic components<sup>7</sup>.

An economy's distance to frontier score is indicated on a scale from 0 to 100, where 0 represents the worst performance and 100 the frontier. All distance to frontier calculations are based on a maximum of 5 decimals. However, indicator ranking calculations and the ease of doing business ranking calculations are based on 2 decimals. The difference between an economy's distance to frontier score in any previous year and its score in 2014 illustrates the extent to which the economy has closed the gap to the regulatory frontier over time. And in any given year the score measures how far an economy is from the best performance at that time.

#### Treatment of the total tax rate

This year, for the first time, the total tax rate component of the paying taxes indicator set enters the distance to frontier calculation in a different way than any other indicator. The distance to frontier score obtained for the total tax rate is transformed in a nonlinear fashion before it enters the distance to frontier score for paying taxes. As a result of the nonlinear transformation, an increase in the total tax rate has a smaller impact on the distance to frontier score for the total tax rate—and therefore on the distance to frontier score for paying taxes—for economies with a below-average total tax rate than it would have in the calculation done in previous years (line B is smaller than line A in figure 15.2 of the *Doing Business 2015* report). And for economies with an extreme total tax rate (a rate that is very high relative to the average), an increase has a greater impact on both these distance to frontier scores than before (line D is bigger than line C in figure 15.2 of the *Doing Business 2015* report).

The nonlinear transformation is not based on any economic theory of an "optimal tax rate" that minimizes distortions or maximizes efficiency in an economy's

---

that from the simple average method because both these methods assign roughly equal weights to the topics, since the pairwise correlations among indicators do not differ much. An alternative to the simple average method is to give different weights to the topics, depending on which are considered of more or less importance in the context of a specific economy.

<sup>7</sup> For getting credit, indicators are weighted proportionally, according to their contribution to the total score, with a weight of 60% assigned to the strength of legal rights index and 40% to the depth of credit information index. Indicators for all other topics are assigned equal weights

overall tax system. Instead, it is mainly empirical in nature. The nonlinear transformation along with the threshold reduces the bias in the indicator toward economies that do not need to levy significant taxes on companies like the *Doing Business* standardized case study company because they raise public revenue in other ways—for example, through taxes on foreign companies, through taxes on sectors other than manufacturing or from natural resources (all of which are outside the scope of the methodology). In addition, it acknowledges the need of economies to collect taxes from firms.

#### Calculation of scores for economies with 2 cities covered

For each of the 11 economies for which a second city was added in this year's report, the distance to frontier score is calculated as the population-weighted average of the distance to frontier scores for the 2 cities covered (table 12.1). This is done for the aggregate score, the scores for each topic and the scores for all the component indicators for each topic.

Table 12.1 Weights used in calculating the distance to frontier scores for economies with 2 cities covered

Economy	City	Weight (%)
Bangladesh	Dhaka	78
	Chittagong	22
Brazil	São Paulo	61
	Rio de Janeiro	39
China	Shanghai	55
	Beijing	45
India	Mumbai	47
	Delhi	53
Indonesia	Jakarta	78
	Surabaya	22
Japan	Tokyo	65
	Osaka	35
Mexico	Mexico City	83
	Monterrey	17
Nigeria	Lagos	77
	Kano	23
Pakistan	Karachi	65
	Lahore	35
Russian Federation	Moscow	70
	St. Petersburg	30
United States	New York	60
	Los Angeles	40

Source: United Nations, Department of Economic and Social Affairs, Population Division, World Urbanization Prospects, 2014 Revision. <http://esa.un.org/unpd/wup/CD-ROM/Default.aspx>.

### Economies that improved the most across 3 or more *Doing Business* topics in 2013/14

*Doing Business 2015* uses a simple method to calculate which economies improved the ease of doing business the most. First, it selects the economies that in 2013/14 implemented regulatory reforms making it easier to do business in 3 or more of the 10 topics included in this year's aggregate distance to frontier score. Twenty-one economies meet this criterion: Azerbaijan; Benin; the Democratic Republic of Congo; Côte d'Ivoire; the Czech Republic; Greece; India; Ireland; Kazakhstan; Lithuania; the former Yugoslav Republic of Macedonia; Poland; Senegal; the Seychelles; Spain; Switzerland; Taiwan, China; Tajikistan; Togo; Trinidad and Tobago; and the United Arab Emirates. Second, *Doing Business* sorts these economies on the increase in their distance to frontier score from the previous year using comparable data.

Selecting the economies that implemented regulatory reforms in at least 3 topics and had the biggest improvements in their distance to frontier scores is intended to highlight economies with ongoing, broad-based reform programs. The improvement in the distance to frontier score is used to identify the top improvers because this allows a focus on the absolute improvement—in contrast with the relative improvement shown by a change in rankings—that economies have made in their regulatory environment for business.

### Ease of *Doing Business* ranking

The ease of doing business ranking ranges from 1 to 189. The ranking of economies is determined by sorting the aggregate distance to frontier scores, rounded to 2 decimals.



## RESOURCES ON THE *DOING BUSINESS* WEBSITE

### **Current features**

News on the *Doing Business* project  
<http://www.doingbusiness.org>

### **Rankings**

How economies rank—from 1 to 189  
<http://www.doingbusiness.org/rankings>

### **Data**

All the data for 189 economies—topic rankings, indicator values, lists of regulatory procedures and details underlying indicators  
<http://www.doingbusiness.org/data>

### **Reports**

Access to *Doing Business* reports as well as subnational and regional reports, reform case studies and customized economy and regional profiles  
<http://www.doingbusiness.org/reports>

### **Methodology**

The methodologies and research papers underlying *Doing Business*  
<http://www.doingbusiness.org/methodology>

### **Research**

Abstracts of papers on *Doing Business* topics and related policy issues  
<http://www.doingbusiness.org/research>

### ***Doing Business* reforms**

Short summaries of DB2015 business regulation reforms, lists of reforms since DB2008 and a ranking simulation tool  
<http://www.doingbusiness.org/reforms>

### **Historical data**

Customized data sets since DB2004  
<http://www.doingbusiness.org/custom-query>

### **Law library**

Online collection of business laws and regulations relating to business  
<http://www.doingbusiness.org/law-library>

### **Contributors**

More than 10,700 specialists in 189 economies who participate in *Doing Business*  
<http://www.doingbusiness.org/contributors/doing-business>

### **Entrepreneurship data**

Data on business density (number of newly registered companies per 1,000 working-age people) for 139 economies  
<http://www.doingbusiness.org/data/exploretopics/entrepreneurship>

### **Distance to frontier**

Data benchmarking 189 economies to the frontier in regulatory practice  
<http://www.doingbusiness.org/data/distance-to-frontier>

### **Information on good practices**

Showing where the many good practices identified by *Doing Business* have been adopted  
<http://www.doingbusiness.org/data/good-practice>

### ***Doing Business* iPhone App**

*Doing Business at a Glance*—presenting the full report, rankings and highlights for each topic for the iPhone, iPad and iPod touch  
<http://www.doingbusiness.org/specialfeatures/iphone>



[www.doingbusiness.org](http://www.doingbusiness.org)

ISBN 978-1-4648-0351-2



SKU 210351