

12TH EDITION

Doing Business 2015

Going Beyond Efficiency

Economy Profile 2015

Nicaragua



COMPARING BUSINESS REGULATIONS FOR DOMESTIC FIRMS IN **189** ECONOMIES

A World Bank Group Flagship Report

© 2014 The International Bank for Reconstruction and Development /
The World Bank
1818 H Street NW, Washington, DC 20433
Telephone: 202-473-1000; Internet: www.worldbank.org

All rights reserved.
1 2 3 4 17 16 15 14

This work is a product of the staff of The World Bank with external contributions. The findings, interpretations, and conclusions expressed in this work do not necessarily reflect the views of The World Bank, its Board of Executive Directors, or the governments they represent. The World Bank does not guarantee the accuracy of the data included in this work. The boundaries, colors, denominations, and other information shown on any map in this work do not imply any judgment on the part of The World Bank concerning the legal status of any territory or the endorsement or acceptance of such boundaries.

Nothing herein shall constitute or be considered to be a limitation upon or waiver of the privileges and immunities of The World Bank, all of which are specifically reserved.



This work is available under the Creative Commons Attribution 3.0 Unported license (CC BY 3.0) <http://creativecommons.org/licenses/by/3.0/igo>. Under the Creative Commons Attribution license, you are free to copy, distribute, transmit, and adapt this work,

including for commercial purposes, under the following conditions:

Attribution—Please cite the work as follows: World Bank. 2014. *Doing Business 2015: Going Beyond Efficiency*. Washington, DC: World Bank Group. DOI: 10.1596/978-1-4648-0351-2. License: Creative Commons Attribution CC BY 3.0 IGO

Translations—If you create a translation of this work, please add the following disclaimer along with the attribution: *This translation was not created by The World Bank and should not be considered an official World Bank translation. The World Bank shall not be liable for any content or error in this translation.*

Adaptations—If you create an adaptation of this work, please add the following disclaimer along with the attribution: *This is an adaptation of an original work by The World Bank. Views and opinions expressed in the adaptation are the sole responsibility of the author or authors of the adaptation and are not endorsed by The World Bank.*

Third-party content—The World Bank does not necessarily own each component of the content contained within the work. The World Bank therefore does not warrant that the use of any third-party-owned individual component or part contained in the work will not infringe on the rights of those third parties. The risk of claims resulting from such infringement rests solely with you. If you wish to re-use a component of the work, it is your responsibility to determine whether permission is needed for that re-use and to obtain permission from the copyright owner. Examples of components can include, but are not limited to, tables, figures or images.

All queries on rights and licenses should be addressed to the Publishing and Knowledge Division, The World Bank, 1818 H Street NW, Washington, DC 20433, USA; fax: 202-522-2625; e-mail: pubrights@worldbank.org.

ISBN (paper): 978-1-4648-0351-2
ISBN (electronic): 978-1-4648-0352-9
DOI: 10.1596/978-1-4648-0351-2
ISSN: 1729-2638

Cover design: Corporate Visions, Inc.

CONTENTS

Introduction	4
The business environment	6
Starting a business	16
Dealing with construction permits	23
Getting electricity	32
Registering property	39
Getting credit	47
Protecting minority investors	54
Paying taxes	62
Trading across borders	67
Enforcing contracts	72
Resolving insolvency	80
Labor market regulation	83
Distance to frontier and ease of doing business ranking	90
Resources on the <i>Doing Business</i> website	93

INTRODUCTION

Doing Business sheds light on how easy or difficult it is for a local entrepreneur to open and run a small to medium-size business when complying with relevant regulations. It measures and tracks changes in regulations affecting 11 areas in the life cycle of a business: starting a business, dealing with construction permits, getting electricity, registering property, getting credit, protecting minority investors, paying taxes, trading across borders, enforcing contracts, resolving insolvency and labor market regulation.

In a series of annual reports *Doing Business* presents quantitative indicators on business regulations and the protection of property rights that can be compared across 189 economies, from Afghanistan to Zimbabwe, over time. The data set covers 47 economies in Sub-Saharan Africa, 32 in Latin America and the Caribbean, 25 in East Asia and the Pacific, 26 in Eastern Europe and Central Asia, 20 in the Middle East and North Africa and 8 in South Asia, as well as 31 OECD high-income economies. The indicators are used to analyze economic outcomes and identify what reforms have worked, where and why.

This economy profile presents the *Doing Business* indicators for Nicaragua. To allow useful comparison, it also provides data for other selected economies (comparator economies) for each indicator. The data in this report are current as of June

1, 2014 (except for the paying taxes indicators, which cover the period January–December 2013).

The *Doing Business* methodology has limitations. Other areas important to business—such as an economy's proximity to large markets, the quality of its infrastructure services (other than those related to trading across borders and getting electricity), the security of property from theft and looting, the transparency of government procurement, macroeconomic conditions or the underlying strength of institutions—are not directly studied by *Doing Business*. The indicators refer to a specific type of business, generally a local limited liability company operating in the largest business city. Because standard assumptions are used in the data collection, comparisons and benchmarks are valid across economies. The data not only highlight the extent of obstacles to doing business; they also help identify the source of those obstacles, supporting policy makers in designing regulatory reform.

More information is available in the full report. *Doing Business 2015* presents the indicators, analyzes their relationship with economic outcomes and presents business regulatory reforms. The data, along with information on ordering *Doing Business 2015*, are available on the *Doing Business* website at <http://www.doingbusiness.org>.

CHANGES IN *DOING BUSINESS 2015*

As part of a 2-year update in methodology, *Doing Business 2015* incorporates 7 important changes. First, the ease of doing business ranking as well as all topic-level rankings are now computed on the basis of distance to frontier scores (see the chapter on the distance to frontier and ease of doing business ranking). Second, for the 11 economies with a population of more than 100 million, data for a second city have been added to the data set and the ranking calculation. These economies are Bangladesh, Brazil, China, India, Indonesia, Japan, Mexico, Nigeria, Pakistan, the Russian Federation and the United States. Third, for getting credit, the methodology has been revised for both the strength of legal rights index and the depth of credit information index. The number of points has been increased in both indices, from 10 to 12 for the strength of legal rights index and from 6 to 8 for the depth of credit information index. In addition, only credit bureaus and registries that cover at least 5% of the adult population can receive a score on the depth of credit information index.

Fourth, the name of the protecting investors indicator set has been changed to protecting minority investors to better reflect its scope—and the scope of the indicator set has been expanded to include shareholders' rights in corporate governance beyond related-party transactions. Fifth, the resolving insolvency indicator set has been expanded to include an index measuring the strength of the legal framework for insolvency. Sixth, the calculation of the distance to frontier score for paying taxes has been changed. The total tax rate component now enters the score in a nonlinear fashion, in an approach different from that used for all other indicators (see the chapter on the distance to frontier and ease of doing business ranking).

Finally, the name of the employing workers indicator set has been changed to labor market regulation, and the scope of this indicator set has also been changed. The indicators now focus on labor market regulation applying to the retail sector rather than the manufacturing sector, and their coverage has been expanded to include regulations on labor disputes and on benefits provided to workers. The labor market regulation indicators continue to be excluded from the aggregate distance to frontier score and ranking on the ease of doing business.

Beyond these changes there are 3 other updates in methodology. For paying taxes, the financial statement variables have been updated to be proportional to 2012 income per capita; previously they were proportional to 2005 income per capita. For enforcing contracts, the value of the claim is now set at twice the income per capita or \$5,000, whichever is greater. For dealing with construction permits, the cost of construction is now set at 50 times income per capita (before, the cost was assessed by the *Doing Business* respondents). In addition, this indicator set no longer includes the procedures for obtaining a landline telephone connection.

For more details on the changes, see the "What is changing in *Doing Business*?" chapter starting on page 24 of the *Doing Business 2015* report. For more details on the data and methodology, please see the "Data Notes" chapter starting on page 114 of the *Doing Business 2015* report. For more details on the distance to frontier metric, please see the "Distance to frontier and ease of doing business ranking" chapter in this profile.

THE BUSINESS ENVIRONMENT

For policy makers trying to improve their economy's regulatory environment for business, a good place to start is to find out how it compares with the regulatory environment in other economies. *Doing Business* provides an aggregate ranking on the ease of doing business based on indicator sets that measure and benchmark regulations applying to domestic small to medium-size businesses through their life cycle. Economies are ranked from 1 to 189 by the ease of doing business ranking. This year's report presents results for 2 aggregate measures: the distance to frontier score and the ease of doing business ranking. The ranking of economies is determined by sorting the aggregate distance to frontier (DTF) scores. The distance to frontier score benchmarks economies with respect to regulatory practice, showing the absolute distance to the best performance in each *Doing Business* indicator. An economy's distance to frontier score is indicated on a scale from 0 to 100, where 0 represents the worst performance and 100 the frontier. (See the chapter on the distance to frontier and ease of doing business). The 10 topics included in the ranking in *Doing Business 2015*: starting a business, dealing with construction permits, getting electricity, registering property, getting credit, protecting minority investors, paying taxes, trading across borders, enforcing contracts and resolving insolvency. The labor market regulation indicators (formerly employing workers) are not included in this year's aggregate ease of doing business ranking, but the data are presented in this year's economy profile.

The aggregate ranking on the ease of doing business benchmarks each economy's performance on the indicators against that of all other economies in the *Doing Business* sample (figure 1.1). While this ranking tells much about the business environment in an economy, it does not tell the whole story. The ranking on the ease of doing business, and the underlying indicators, do not measure all aspects of the business environment that matter to firms and investors or that affect the competitiveness of the economy. Still, a high ranking does mean that the government has created a regulatory environment conducive to operating a business.

ECONOMY OVERVIEW

Region: Latin America & Caribbean

Income category: Lower middle income

Population: 6,080,478

GNI per capita (US\$): 1,780

DB2015 rank: 119

DB2014 rank: 126*

Change in rank: 7

DB 2015 DTF: 58.1

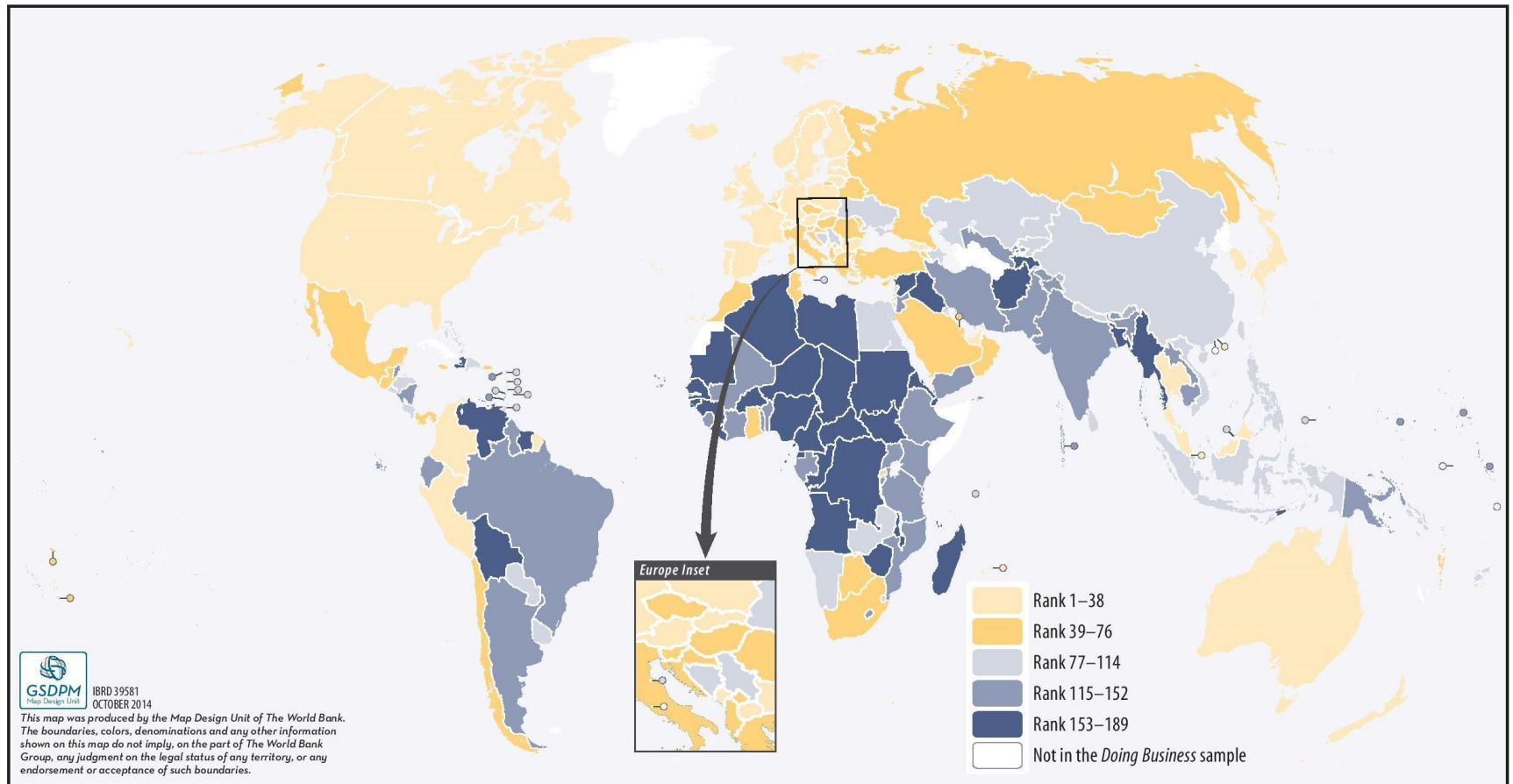
DB 2014 DTF: 56.9

Change in DTF: 1.2

* DB2014 ranking shown is not last year's published ranking but a comparable ranking for DB2014 that captures the effects of such factors as data corrections and the changes in methodology. See the data notes starting on page 114 of the *Doing Business 2015* report for sources and definitions.

THE BUSINESS ENVIRONMENT

Figure 1.1 Where economies stand in the global ranking on the ease of doing business



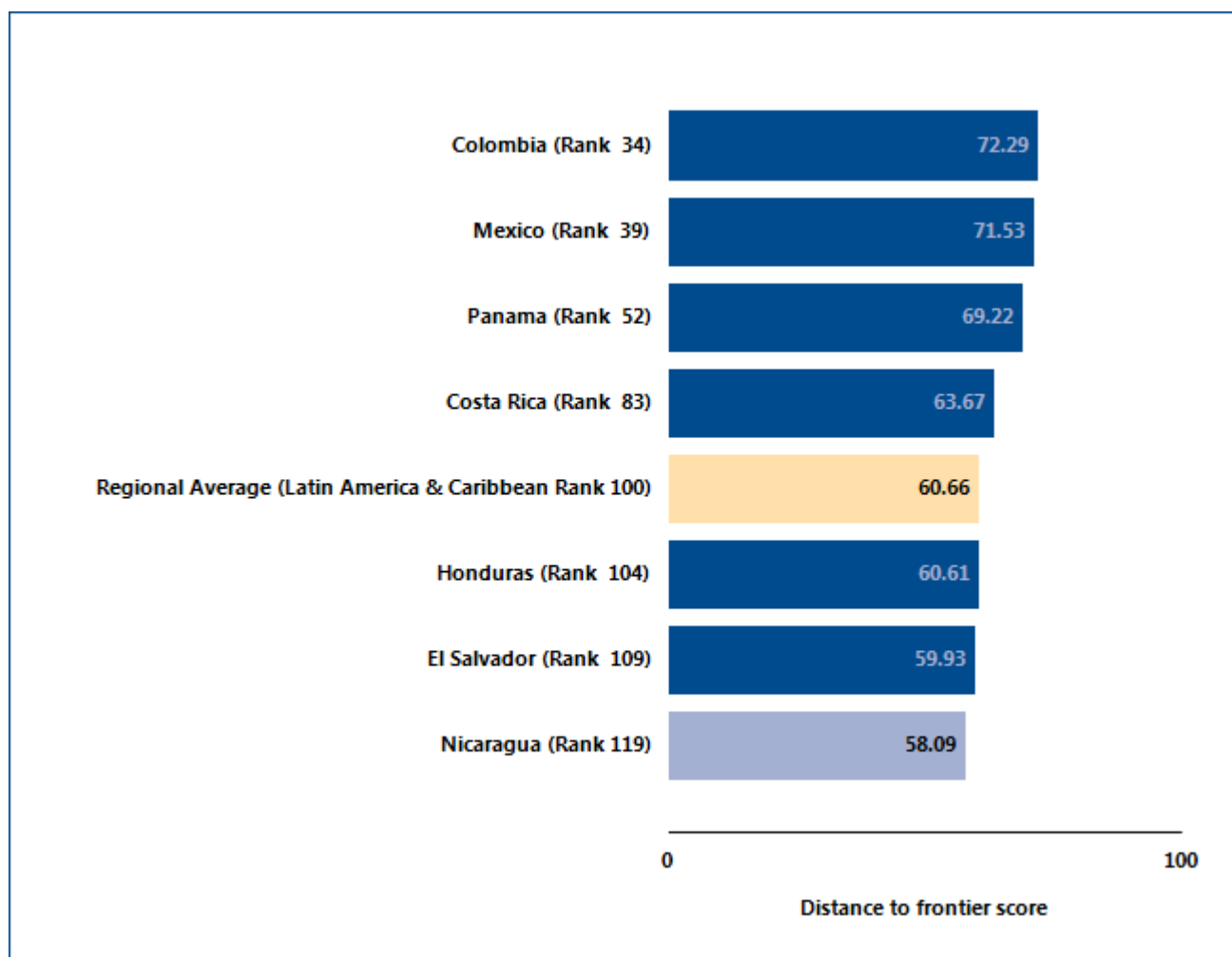
Source: *Doing Business* database.

THE BUSINESS ENVIRONMENT

For policy makers, knowing where their economy stands in the aggregate ranking on the ease of doing business is useful. Also useful is to know how it ranks relative to comparator economies and relative to the

regional average (figure 1.2). The economy's rankings (figure 1.3) and distance to frontier scores (figure 1.4) on the topics included in the ease of doing business ranking provide another perspective.

Figure 1.2 How Nicaragua and comparator economies rank on the ease of doing business



Note: The rankings are benchmarked to June 2014 and based on the average of each economy's distance to frontier (DTF) scores for the 10 topics included in this year's aggregate ranking. The distance to frontier score benchmarks economies with respect to regulatory practice, showing the absolute distance to the best performance in each *Doing Business* indicator. An economy's distance to frontier score is indicated on a scale from 0 to 100, where 0 represents the worst performance and 100 the frontier. For the economies for which the data cover 2 cities, scores are a population-weighted average for the 2 cities.

Source: *Doing Business* database.

THE BUSINESS ENVIRONMENT

Figure 1.3 Rankings on *Doing Business* topics - Nicaragua
 (Scale: Rank 189 center, Rank 1 outer edge)

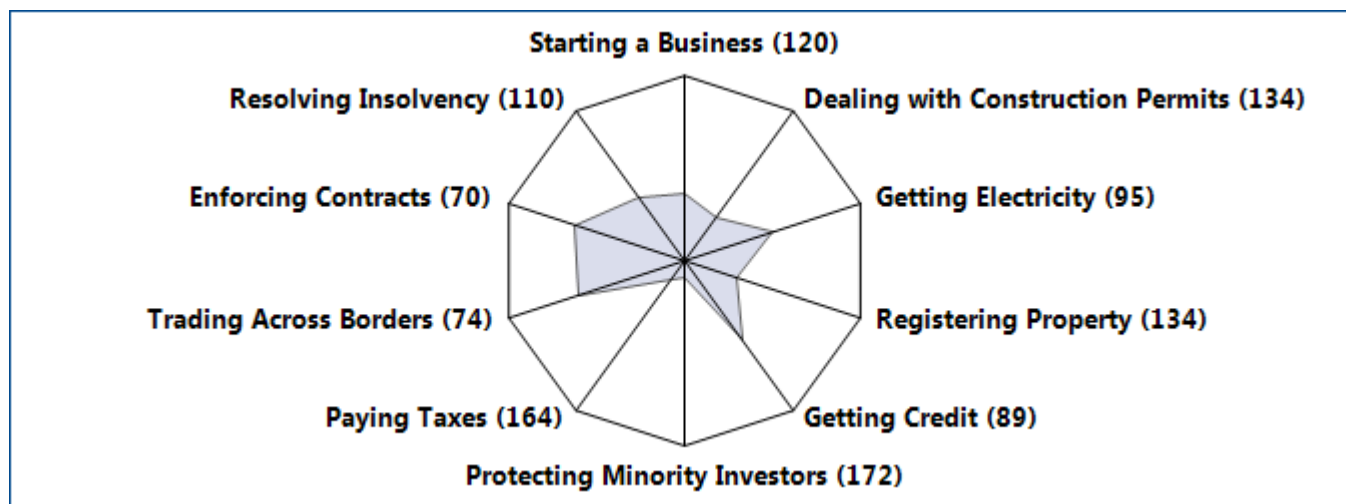
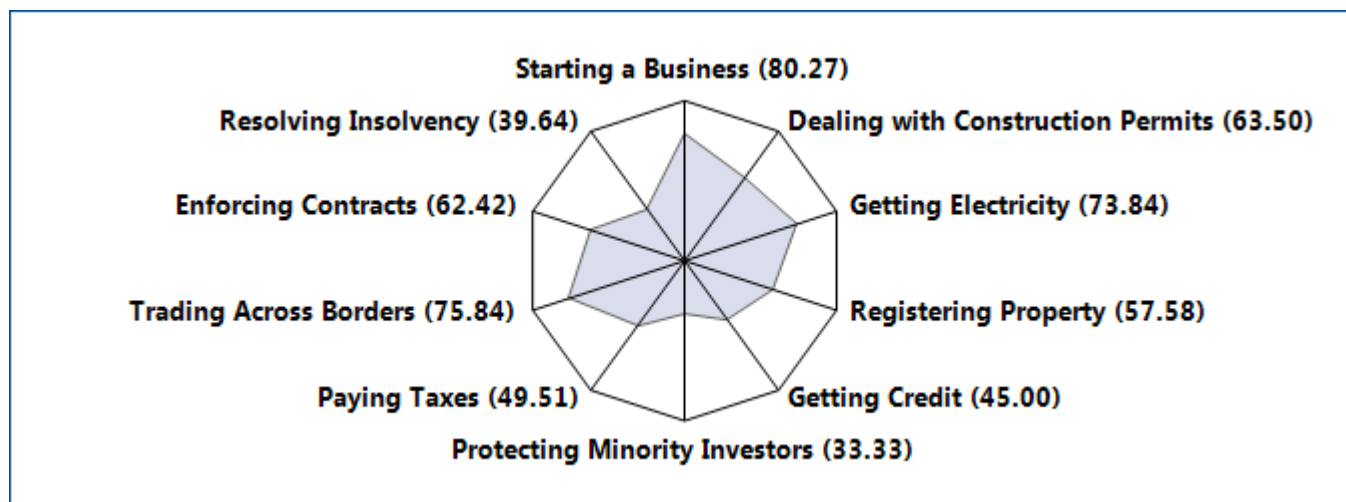


Figure 1.4 Distance to frontier scores on *Doing Business* topics - Nicaragua
 (Scale: Score 0 center, Score 100 outer edge)



Note: The rankings are benchmarked to June 2014 and based on the average of each economy’s distance to frontier (DTF) scores for the 10 topics included in this year’s aggregate ranking. The distance to frontier score benchmarks economies with respect to regulatory practice, showing the absolute distance to the best performance in each *Doing Business* indicator. An economy’s distance to frontier score is indicated on a scale from 0 to 100, where 0 represents the worst performance and 100 the frontier. For the economies for which the data cover 2 cities, scores are a population-weighted average for the 2 cities.
Source: *Doing Business* database.

THE BUSINESS ENVIRONMENT

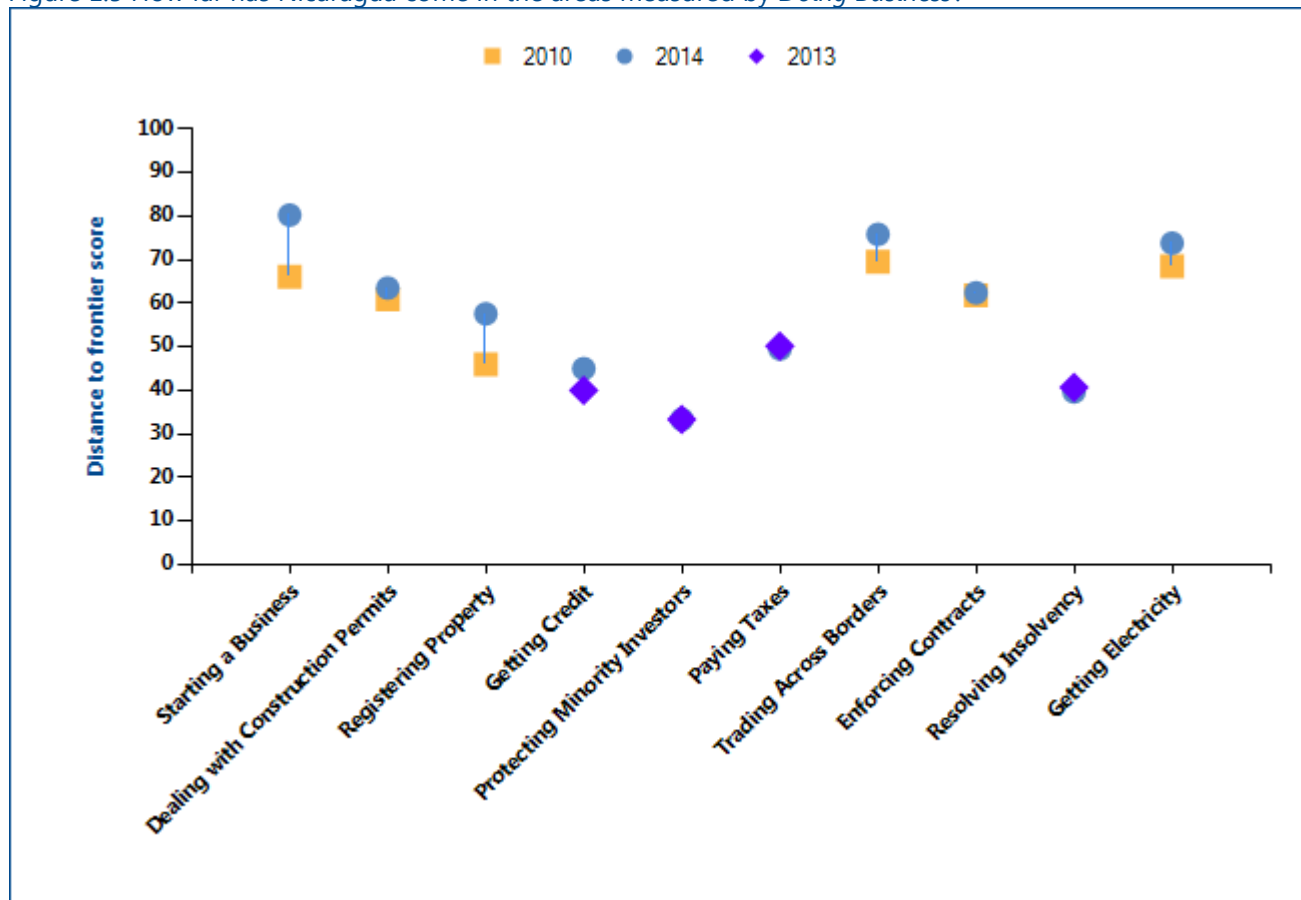
Just as the overall ranking on the ease of doing business tells only part of the story, so do changes in that ranking. Yearly movements in rankings can provide some indication of changes in an economy’s regulatory environment for firms, but they are always relative.

Moreover, year-to-year changes in the overall rankings do not reflect how the business regulatory environment in an economy has changed over time—or how it has changed in different areas. To aid in assessing such changes,

Doing Business introduced the distance to frontier score. This measure shows how far on average an economy is from the best performance achieved by any economy on each *Doing Business* indicator.

Comparing the measure for an economy at 2 points in time allows users to assess how much the economy’s regulatory environment as measured by *Doing Business* has changed over time—how far it has moved toward (or away from) the most efficient practices and strongest regulations in areas covered by *Doing Business* (figure 1.5).

Figure 1.5 How far has Nicaragua come in the areas measured by *Doing Business*?



Note: The distance to frontier score shows how far on average an economy is from the best performance achieved by any economy on each *Doing Business* indicator since 2010, except for getting credit, paying taxes, protecting minority investors and resolving insolvency which had methodology changes in 2014 and thus are only comparable to 2013. The measure is normalized to range between 0 and 100, with 100 representing the best performance (the frontier). See the data notes starting on page 114 of the *Doing Business 2015* report for more details on the distance to frontier score.

Source: *Doing Business* database.

THE BUSINESS ENVIRONMENT

The absolute values of the indicators tell another part of the story (table 1.1). The indicators, on their own or in comparison with the indicators of a good practice economy or those of comparator economies in the region, may reveal bottlenecks reflected in large numbers of procedures, long delays or high costs. Or they may reveal unexpected strengths in an area of business

regulation—such as a regulatory process that can be completed with a small number of procedures in a few days and at a low cost. Comparison of the economy's indicators today with those in the previous year may show where substantial bottlenecks persist—and where they are diminishing.

Table 1.1 Summary of *Doing Business* indicators for Nicaragua

Indicator	Nicaragua DB2015	Nicaragua DB2014	Colombia DB2015	Costa Rica DB2015	El Salvador DB2015	Honduras DB2015	Mexico DB2015	Panama DB2015	Best performer globally DB2015
Starting a Business (rank)	120	140	84	118	121	138	67	38	New Zealand (1)
Starting a Business (DTF Score)	80.27	72.63	86.13	80.90	79.87	74.84	88.85	91.93	New Zealand (99.96)
Procedures (number)	6.0	7.0	8.0	9.0	8.0	12.0	6.0	5.0	New Zealand (1.0)*
Time (days)	13.0	36.0	11.0	24.0	16.5	14.0	6.3	6.0	New Zealand (0.5)
Cost (% of income per capita)	73.9	77.0	7.5	11.5	45.2	39.0	18.6	6.4	Slovenia (0.0)
Paid-in min. capital (% of income per capita)	0.0	0.0	0.0	0.0	2.7	11.5	0.0	0.0	112 Economies (0.0)*
Dealing with Construction Permits (rank)	134	133	61	52	155	103	108	63	Hong Kong SAR, China (1)
Dealing with Construction Permits (DTF Score)	63.50	63.25	76.45	78.14	57.19	69.37	68.43	75.97	Hong Kong SAR, China (95.53)

Indicator	Nicaragua DB2015	Nicaragua DB2014	Colombia DB2015	Costa Rica DB2015	El Salvador DB2015	Honduras DB2015	Mexico DB2015	Panama DB2015	Best performer globally DB2015
Procedures (number)	16.0	16.0	10.0	13.0	25.0	15.0	11.3	15.0	Hong Kong SAR, China (5.0)
Time (days)	207.0	207.0	73.0	113.0	115.0	82.0	87.6	101.0	Singapore (26.0)
Cost (% of warehouse value)	2.7	2.8	7.4	1.7	4.6	7.2	10.3	2.1	Qatar (0.0)*
Getting Electricity (rank)	95	91	92	46	144	110	116	29	Korea, Rep. (1)
Getting Electricity (DTF Score)	73.84	73.52	74.20	82.72	60.56	70.96	68.47	86.39	Korea, Rep. (99.83)
Procedures (number)	6.0	6.0	5.0	5.0	8.0	7.0	6.8	5.0	12 Economies (3.0)*
Time (days)	55.0	55.0	105.0	55.0	83.0	39.0	78.9	35.0	Korea, Rep. (18.0)*
Cost (% of income per capita)	1,003.4	1,082.5	504.4	196.2	543.8	918.0	346.1	9.3	Japan (0.0)
Registering Property (rank)	134	128	42	47	56	81	110	61	Georgia (1)
Registering Property (DTF Score)	57.58	57.57	79.33	78.40	75.65	70.09	62.45	74.65	Georgia (99.88)
Procedures (number)	9.0	9.0	6.0	5.0	5.0	6.0	6.8	7.0	4 Economies (1.0)*
Time (days)	58.0	58.0	16.0	19.0	31.0	22.0	63.6	22.5	3 Economies (1.0)*
Cost (% of property value)	5.0	5.0	2.0	3.4	3.8	5.7	5.1	2.4	4 Economies (0.0)*
Getting Credit (rank)	89	99	2	89	71	7	12	17	New Zealand (1)
Getting Credit (DTF Score)	45.00	40.00	95.00	45.00	50.00	85.00	80.00	75.00	New Zealand (100)
Strength of legal rights index (0-12)	1	1	12	2	3	9	8	7	3 Economies (12)*

Indicator	Nicaragua DB2015	Nicaragua DB2014	Colombia DB2015	Costa Rica DB2015	El Salvador DB2015	Honduras DB2015	Mexico DB2015	Panama DB2015	Best performer globally DB2015
Depth of credit information index (0-8)	8	7	7	7	7	8	8	8	23 Economies (8)*
Credit registry coverage (% of adults)	16.2	16.0	0.0	27.4	28.2	21.8	0.0	0.0	Portugal (100.0)
Credit bureau coverage (% of adults)	40.7	32.3	87.0	100.0	32.0	36.1	100.0	63.0	23 Economies (100.0)*
Protecting Minority Investors (rank)	172	171	10	181	154	174	62	76	New Zealand (1)
Protecting Minority Investors (DTF Score)	33.33	33.33	71.67	28.33	41.67	31.67	57.50	55.83	New Zealand (81.67)
Extent of conflict of interest regulation index (0-10)	4.0	4.0	8.0	3.3	3.3	3.3	6.0	5.3	Singapore (9.3)*
Extent of shareholder governance index (0-10)	2.7	2.7	6.3	2.3	5.0	3.0	5.5	5.8	France (7.8)*
Strength of minority investor protection index (0-10)	3.3	3.3	7.2	2.8	4.2	3.2	5.8	5.6	New Zealand (8.2)
Paying Taxes (rank)	164	163	146	121	161	153	105	166	United Arab Emirates (1)*
Paying Taxes (DTF Score)	49.51	50.16	59.71	67.27	52.31	57.92	71.17	48.60	United Arab Emirates (99.44)*
Payments (number per year)	43.0	43.0	11.0	23.0	53.0	48.0	6.0	52.0	Hong Kong SAR, China (3.0)*
Time (hours per year)	207.0	207.0	239.0	163.0	320.0	224.0	334.0	417.0	Luxembourg (55.0)
Trading Across Borders (rank)	74	77	93	47	73	70	44	9	Singapore (1)
Trading Across Borders	75.84	75.11	72.69	80.84	76.01	76.50	81.26	91.25	Singapore (96.47)

Indicator	Nicaragua DB2015	Nicaragua DB2014	Colombia DB2015	Costa Rica DB2015	El Salvador DB2015	Honduras DB2015	Mexico DB2015	Panama DB2015	Best performer globally DB2015
(DTF Score)									
Documents to export (number)	5	5	4	5	7	5	4	3	Ireland (2)*
Time to export (days)	21.0	21.0	14.0	14.0	13.0	12.0	12.0	10.0	5 Economies (6.0)*
Cost to export (US\$ per container)	1,140.0	1,140.0	2,355.0	1,020.0	1,045.0	1,450.0	1,499.3	665.0	Timor-Leste (410.0)
Cost to export (deflated US\$ per container)	1,140.0	1,247.6	2,355.0	1,020.0	1,045.0	1,450.0	1,499.3	665.0	
Documents to import (number)	5	5	6	5	7	6	4	3	Ireland (2)*
Time to import (days)	20.0	20.0	13.0	14.0	10.0	16.0	11.2	9.0	Singapore (4.0)
Cost to import (US\$ per container)	1,245.0	1,245.0	2,470.0	1,070.0	1,035.0	1,630.0	1,887.6	1,030.0	Singapore (440.0)
Cost to import (deflated US\$ per container)	1,245.0	1,362.5	2,470.0	1,070.0	1,035.0	1,630.0	1,887.6	1,030.0	
Enforcing Contracts (rank)	70	71	168	129	82	166	57	84	Singapore (1)
Enforcing Contracts (DTF Score)	62.42	62.42	37.66	51.13	60.06	37.90	64.61	58.87	Singapore (89.54)
Time (days)	519.0	519.0	1,288.0	852.0	786.0	920.0	388.9	686.0	Singapore (150.0)
Cost (% of claim)	26.8	26.8	47.9	24.3	19.2	35.2	30.9	38.0	Iceland (9.0)
Procedures (number)	37.0	37.0	33.0	40.0	35.0	47.0	36.8	32.0	Singapore (21.0)*
Resolving Insolvency (rank)	110	102	30	89	79	140	27	132	Finland (1)
Resolving Insolvency (DTF Score)	39.64	40.68	70.00	43.95	46.02	31.83	72.59	33.66	Finland (93.85)

Indicator	Nicaragua DB2015	Nicaragua DB2014	Colombia DB2015	Costa Rica DB2015	El Salvador DB2015	Honduras DB2015	Mexico DB2015	Panama DB2015	Best performer globally DB2015
Time (years)	2.2		1.7	3.0	3.5	3.8	1.8	2.5	Ireland (0.4)
Cost (% of estate)	14.5	14.5	6.0	14.5	12.0	14.5	18.0	25.0	Norway (1.0)
Outcome (0 as piecemeal sale and 1 as going concern)	0	0	1	0	0	0	1	0	
Recovery rate (cents on the dollar)	33.0	34.9	72.0	26.5	33.2	18.5	68.1	27.7	Japan (92.9)
Strength of insolvency framework index (0-16)	7.0	7.0	10.0	9.5	9.0	7.0	11.5	6.0	5 Economies (15.0)*

Note: DB2014 rankings shown are not last year's published rankings but comparable rankings for DB2014 that capture the effects of such factors as data corrections and changes to the methodology. Trading across borders deflated and non-deflated values are identical in DB2015 because it is defined as the base year for the deflator. The best performer on time for paying taxes is defined as the lowest time recorded among all economies in the DB2015 sample that levy the 3 major taxes: profit tax, labor taxes and mandatory contributions, and VAT or sales tax. If an economy has no laws or regulations covering a specific area—for example, insolvency—it receives a “no practice” mark. Similarly, an economy receives a “no practice” or “not possible” mark if regulation exists but is never used in practice or if a competing regulation prohibits such practice. Either way, a “no practice” mark puts the economy at the bottom of the ranking on the relevant indicator.

* Two or more economies share the top ranking on this indicator. A number shown in place of an economy's name indicates the number of economies that share the top ranking on the indicator. For a list of these economies, see the *Doing Business* website (<http://www.doingbusiness.org>).

Source: *Doing Business* database.

STARTING A BUSINESS

Formal registration of companies has many immediate benefits for the companies and for business owners and employees. Legal entities can outlive their founders. Resources are pooled as several shareholders join forces to start a company. Formally registered companies have access to services and institutions from courts to banks as well as to new markets. And their employees can benefit from protections provided by the law. An additional benefit comes with limited liability companies. These limit the financial liability of company owners to their investments, so personal assets of the owners are not put at risk. Where governments make registration easy, more entrepreneurs start businesses in the formal sector, creating more good jobs and generating more revenue for the government.

What do the indicators cover?

Doing Business measures the ease of starting a business in an economy by recording all procedures officially required or commonly done in practice by an entrepreneur to start up and formally operate an industrial or commercial business—as well as the time and cost required to complete these procedures. It also records the paid-in minimum capital that companies must deposit before registration (or within 3 months). The ranking of economies on the ease of starting a business is determined by sorting their distance to frontier scores for starting a business. These scores are the simple average of the distance to frontier scores for each of the component indicators.

To make the data comparable across economies, *Doing Business* uses several assumptions about the business and the procedures. It assumes that all information is readily available to the entrepreneur and that there has been no prior contact with officials. It also assumes that the entrepreneur will pay no bribes. And it assumes that the business:

- Is a limited liability company, located in the largest business city and is 100% domestically owned¹.
- Has between 10 and 50 employees.
- Conducts general commercial or industrial activities.
- Has a start-up capital of 10 times income per capita.
- Has a turnover of at least 100 times income per capita.
- Does not qualify for any special benefits.
- Does not own real estate.

WHAT THE STARTING A BUSINESS

INDICATORS MEASURE

Procedures to legally start and operate a company (number)

- Preregistration (for example, name verification or reservation, notarization)
- Registration in the economy's largest business city¹
- Postregistration (for example, social security registration, company seal)

Time required to complete each procedure (calendar days)

- Does not include time spent gathering information
- Each procedure starts on a separate day (2 procedures cannot start on the same day). Procedures that can be fully completed online are recorded as ½ day.
- Procedure completed once final document is received
- No prior contact with officials

Cost required to complete each procedure (% of income per capita)

- Official costs only, no bribes
- No professional fees unless services required by law

Paid-in minimum capital (% of income per capita)

- Deposited in a bank or with a notary before registration (or within 3 months)

¹ For the 11 economies with a population of more than 100 million, data for a second city have been added.

STARTING A BUSINESS

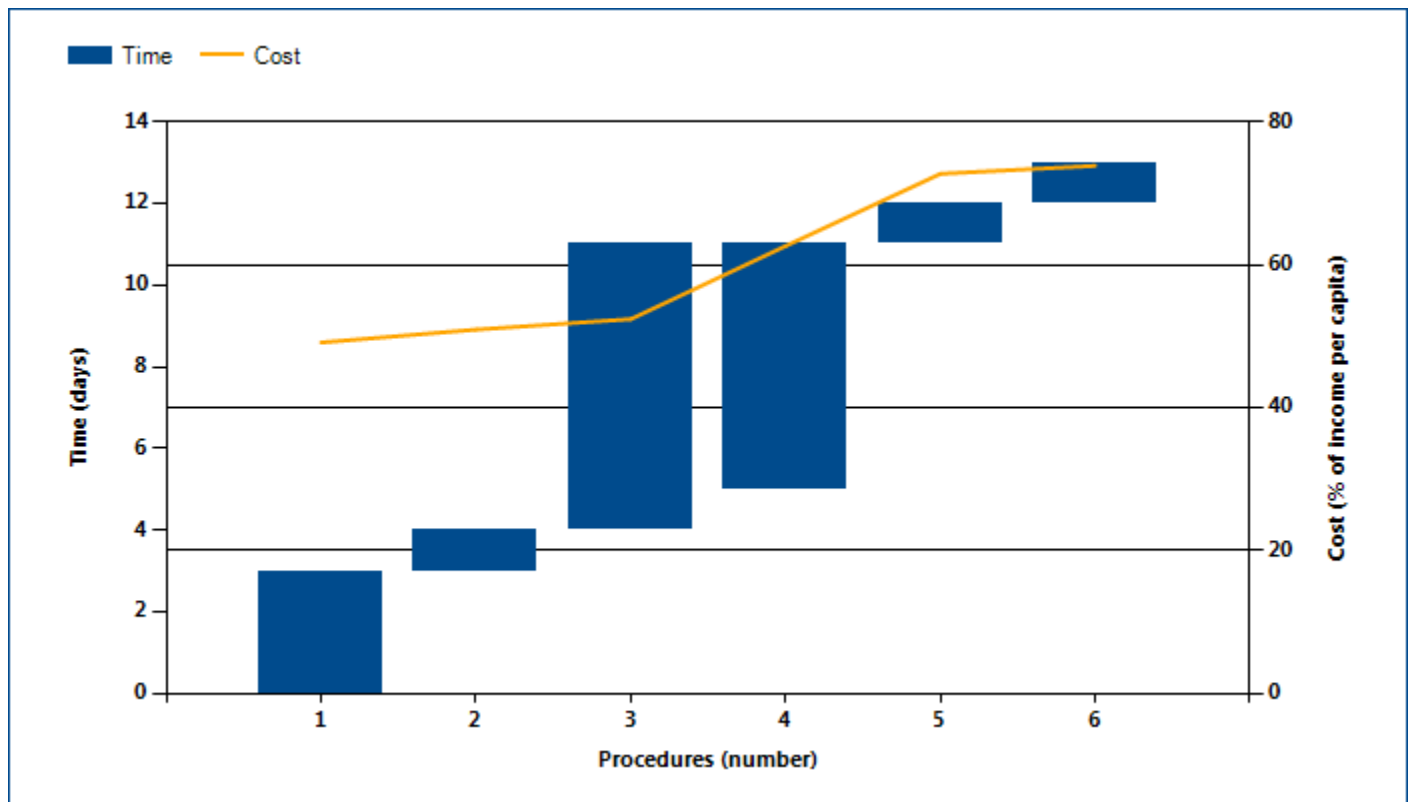
Where does the economy stand today?

What does it take to start a business in Nicaragua? According to data collected by *Doing Business*, starting a business there requires 6.0 procedures, takes 13.0 days, costs 73.9% of income per capita and requires paid-in minimum capital of 0.0% of income per capita (figure 2.1). Most indicator sets refer to a case scenario in the

largest business city of an economy, except for 11 economies for which the data are a population-weighted average of the 2 largest business cities. See the chapter on distance to frontier and ease of doing business ranking at the end of this profile for more details.

Figure 2.1 What it takes to start a business in Nicaragua -

Paid-in minimum capital (% of income per capita): 0.0



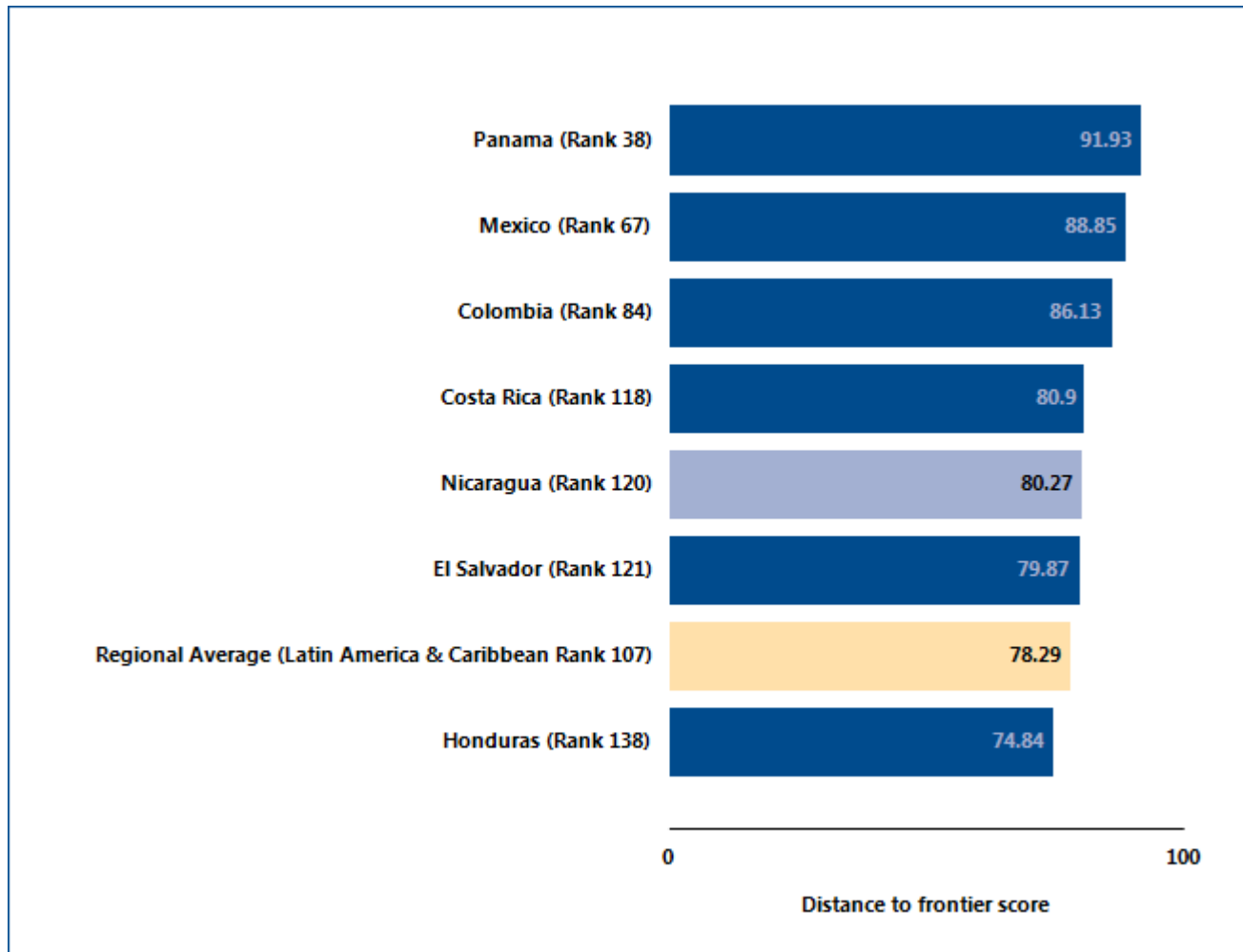
Note: Time shown in the figure above may not reflect simultaneity of procedures. Online procedures account for 0.5 days in the total time calculation. For more information on the methodology of the starting a business indicators, see the *Doing Business* website (<http://www.doingbusiness.org>). For details on the procedures reflected here, see the summary at the end of this chapter. Source: *Doing Business* database.

STARTING A BUSINESS

Globally, Nicaragua stands at 120 in the ranking of 189 economies on the ease of starting a business (figure 2.2). The rankings for comparator economies and the regional

average ranking provide other useful information for assessing how easy it is for an entrepreneur in Nicaragua to start a business.

Figure 2.2 How Nicaragua and comparator economies rank on the ease of starting a business



Source: Doing Business database.

STARTING A BUSINESS

Economies around the world have taken steps making it easier to start a business—streamlining procedures by setting up a one-stop shop, making procedures simpler or faster by introducing technology and reducing or eliminating minimum capital requirements. Many have undertaken business registration reforms in stages—and

they often are part of a larger regulatory reform program. Among the benefits have been greater firm satisfaction and savings and more registered businesses, financial resources and job opportunities.

What business registration reforms has *Doing Business* recorded in Nicaragua (table 2.1)?

Table 2.1 How has Nicaragua made starting a business easier—or not?
By *Doing Business* report year from DB2010 to DB2015

DB year	Reform
DB2014	Nicaragua made starting a business easier by merging the procedures for registering with the revenue authority and with the municipality and by reducing the time required for incorporation.
DB2015	Nicaragua made starting a business easier by combining multiple registration procedures.

Note: For information on reforms in earlier years (back to DB2005), see the *Doing Business* reports for these years, available at <http://www.doingbusiness.org>.

Source: *Doing Business* database.

STARTING A BUSINESS

What are the details?

Underlying the indicators shown in this chapter for Nicaragua is a set of specific procedures—the bureaucratic and legal steps that an entrepreneur must complete to incorporate and register a new firm. These are identified by *Doing Business* through collaboration with relevant local professionals and the study of laws, regulations and publicly available information on business entry in that economy. Following is a detailed summary of those procedures, along with the associated time and cost. These procedures are those that apply to a company matching the standard assumptions (the “standardized company”) used by *Doing Business* in collecting the data (see the section in this chapter on what the indicators measure).

STANDARDIZED COMPANY

Legal form: Sociedad Anónima (S.A.) - Corporation

Paid in minimum capital requirement: NIO 0

City: Managua

Start-up Capital: 10 times GNI per capita

Table 2.2 Summary of time, cost and procedures for starting a business in Nicaragua -

No.	Procedure	Time to complete	Cost to complete
1	<p>Sign the incorporation papers before a notary public</p> <p>The documents of incorporation and the company bylaws must be drafted by a notary public. It is customary to include the company bylaws in the document of incorporation. Most notaries will also perform the remaining steps (explained in the following steps) in the incorporation process, for a fee of USD 200 (average). The notary cost is in between USD 750–1,000.</p> <p><i>Agency: Public Notary</i></p>	3 days	USD 875
2	<p>Buy company accounting books and corporate books</p> <p>All companies must keep four corporate books: two accounting books (diary and ledger) and two corporate books (minute book and share book). The cost of the books may vary from one bookstore to another.</p> <p><i>Agency: Bookstore</i></p>	1 day	NIO 800
3	<p>File incorporation statutes (acta constitutiva), register accounting books (sellado de libros) and register as a trader (inscripcion como comerciante) with the Commercial Registry (Registro Comercial) at the one-stop shop (Ventanilla Unica)</p> <p>Since February 2014, the Public Registry of Nicaragua approved a new resolution in allowing entrepreneurs to file the incorporation statutes,</p>	1 week	NIO 350 (registration of accounting books) + NIO 300 (application as a trader)

No.	Procedure	Time to complete	Cost to complete
	<p>to register the accounting books and the inscription as a trader at the same time at the one-stop shop.</p> <p>The cost for commercial registration is 1% of capital (with a minimum of NIO 1,000, maximum of NIO 30,000) and the following fees apply:</p> <ul style="list-style-type: none"> - Inscription of constitution of internal books: NIO 100. - Registration fee for books (diario, mayor, actas y acciones) NIO 350.00. - Registration as a trader (inscripcion como comerciante): NIO 300. - Form for municipal license (matricula): NIO 5. - Municipal license: for social capital lower than NIO 50,000 is NIO 500; higher than NIO 50,000 is 1% of capital. - Municipal license document (constancia de matricula): 1% of license fee. <p>The payment must be made in Banpro or Banco de Finanzas, and the payment receipt must be presented at the one-stop shop. Regardless whether the company has income, it must declare before the Nicaraguan Tax Authority (Dirección General de Impuestos) each month. If the company has no sales, it will not pay any taxes. However, it will have to pay the fees for the services performed by their representative in Nicaragua before the DGI.</p> <p><i>Agency: Representation of the Commercial Registrar at the one-stop shop (Ventanilla Unica de Inversiones, VUI)</i></p>		
<p>4</p>	<p>* Pay the inscription fees</p> <p>Fees must be paid into any bank and the receipt presented to the one-stop shop (see Procedure 5). There is a commercial bank within the Commercial Registry where the payment can be made.</p> <p><i>Agency: Commercial Bank</i></p>	<p>1 day (simultaneous with previous procedure)</p>	<p>1% of capital (Commercial Registration) within a minimum of NIO 1,000 and a maximum of NIO 30,000 + NIO 100 (inscription of internal books)</p>
<p>5</p>	<p>Obtain the DUR (Documento Unico de Registro), a single document that allows registering at the same time for sales of taxes (RUC), social security (INSS), and the pre-municipal license (pre-matricula) at the one-stop shop or at the DGI (Dirección General de Ingresos).</p> <p>On June 1, 2012, the municipality of Managua, created the DUR (Documento Único de Registro), a single document that allows to register at the same time for sales of taxes (RUC), social security (INSS), and the pre-municipal license (pre-matricula) at the one-stop shop or at the DGI (Dirección General de Ingresos). In addition, the payment of the pre-municipal license is now made at the one-stop shop with DUR.</p> <p><i>Agency: Representation of DUR (Documento Unico de Registro) at the one-stop shop (VUI) or at the DGI</i></p>	<p>1 day</p>	<p>1% of capital (municipal license fee) + 1% of municipal license fee (municipal license document) + NIO 5 (form for municipal license)</p>

No.	Procedure	Time to complete	Cost to complete
6	<p>Obtain a municipal license (matrícula)</p> <p>After June 2012, the request and payment of the pre-municipal license is made with the application of DUR and not with the delegation of Municipality (Alcaldía) at the one-stop shop. However, entrepreneurs must go to the delegation of the Municipality (Alcaldía) at the one-stop shop to obtain the official license (matrícula).</p> <p>Entrepreneurs are paying a contingent fee of NIO 500 in order to expedite and guarantee the municipal license.</p> <p><i>Agency: Representation of the Municipality of Managua (Alcaldía de Managua) at the one-stop shop (VUI)</i></p>	1 day	NIO 500

* Takes place simultaneously with another procedure.

Note: Online procedures account for 0.5 days in the total time calculation.

Source: Doing Business database.

DEALING WITH CONSTRUCTION PERMITS

Regulation of construction is critical to protect the public. But it needs to be efficient, to avoid excessive constraints on a sector that plays an important part in every economy. Where complying with building regulations is excessively costly in time and money, many builders opt out. They may pay bribes to pass inspections or simply build illegally, leading to hazardous construction that puts public safety at risk. Where compliance is simple, straightforward and inexpensive, everyone is better off.

What do the indicators cover?

Doing Business records the procedures, time and cost for a business in the construction industry to obtain all the necessary approvals to build a warehouse in the economy's largest business city, connect it to basic utilities and register the warehouse so that it can be used as collateral or transferred to another entity.

The ranking of economies on the ease of dealing with construction permits is determined by sorting their distance to frontier scores for dealing with construction permits. These scores are the simple average of the distance to frontier scores for each of the component indicators.

To make the data comparable across economies, *Doing Business* uses several assumptions about the business and the warehouse, including the utility connections.

The business:

- Is a limited liability company operating in the construction business and located in the largest business city. For the 11 economies with a population of more than 100 million, data for a second city have been added. Is domestically owned and operated.
- Has 60 builders and other employees.

The warehouse:

- Is valued at 50 times income per capita.
- Is a new construction (there was no previous construction on the land).

WHAT THE DEALING WITH CONSTRUCTION PERMITS INDICATORS MEASURE

Procedures to legally build a warehouse (number)

Submitting all relevant documents and obtaining all necessary clearances, licenses, permits and certificates

Submitting all required notifications and receiving all necessary inspections

Obtaining utility connections for water and sewerage

Registering the warehouse after its completion (if required for use as collateral or for transfer of the warehouse)

Time required to complete each procedure (calendar days)

Does not include time spent gathering information

Each procedure starts on a separate day. Procedures that can be fully completed online are recorded as ½ day.

Procedure considered completed once final document is received

No prior contact with officials

Cost required to complete each procedure (% of warehouse value)

Official costs only, no bribes

- Will have complete architectural and technical plans prepared by a licensed architect or engineer.
- Will be connected to water and sewerage (sewage system, septic tank or their equivalent). The connection to each utility network will be 150 meters (492 feet) long.
- Will be used for general storage, such as of books or stationery (not for goods requiring special conditions).
- Will take 30 weeks to construct (excluding all delays due to administrative and regulatory requirements).

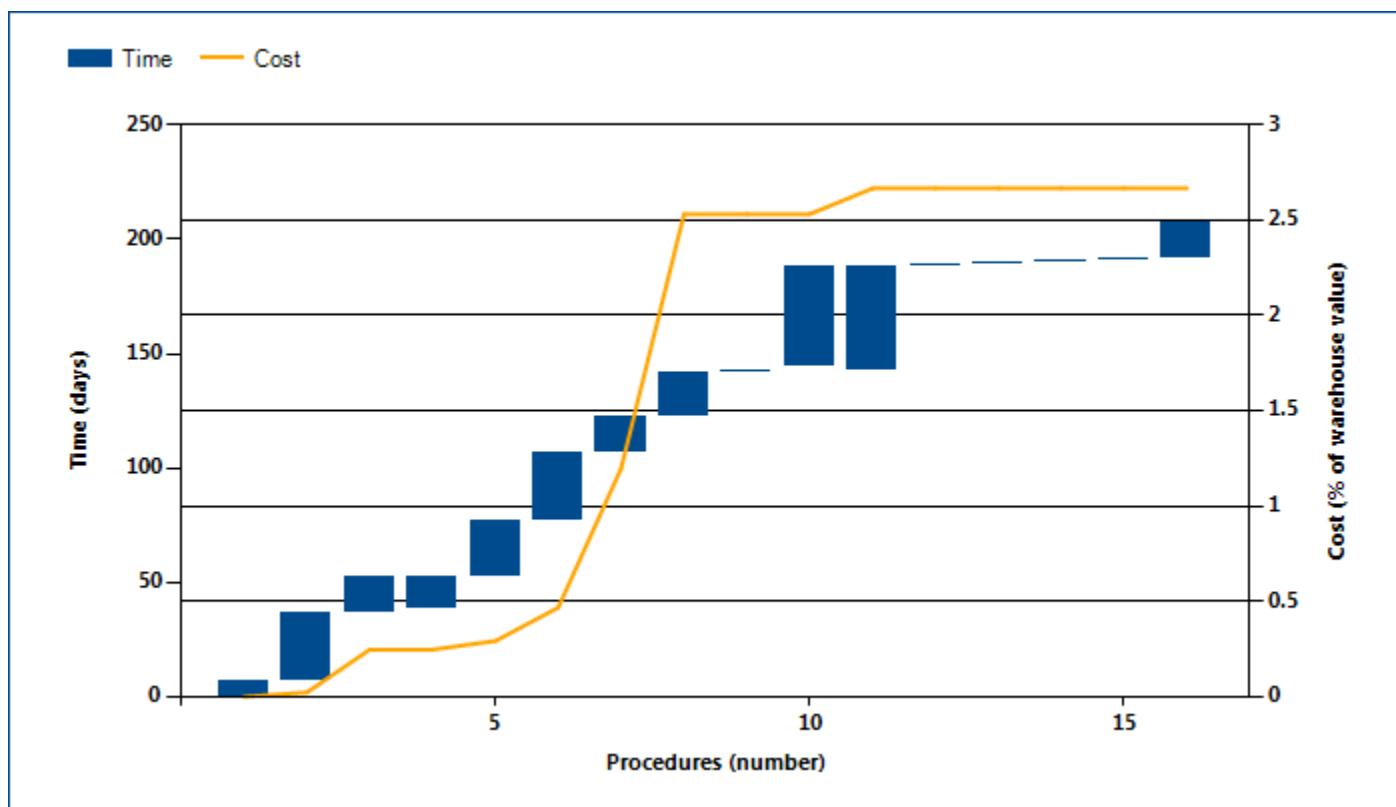
DEALING WITH CONSTRUCTION PERMITS

Where does the economy stand today?

What does it take to comply with the formalities to build a warehouse in Nicaragua? According to data collected by *Doing Business*, dealing with construction permits there requires 16.0 procedures, takes 207.0 days and costs 2.7% of the warehouse value (figure 3.1). Most indicator sets refer to a case scenario in the largest

business city of an economy, except for 11 economies for which the data are a population-weighted average of the 2 largest business cities. See the chapter on distance to frontier and ease of doing business ranking at the end of this profile for more details.

Figure 3.1 What it takes to comply with formalities to build a warehouse in Nicaragua -



Note: Time shown in the figure above may not reflect simultaneity of procedures. Online procedures account for 0.5 days in the total time calculation. For more information on the methodology of the dealing with construction permits indicators, see the *Doing Business* website (<http://www.doingbusiness.org>). For details on the procedures reflected here, see the summary at the end of this chapter.

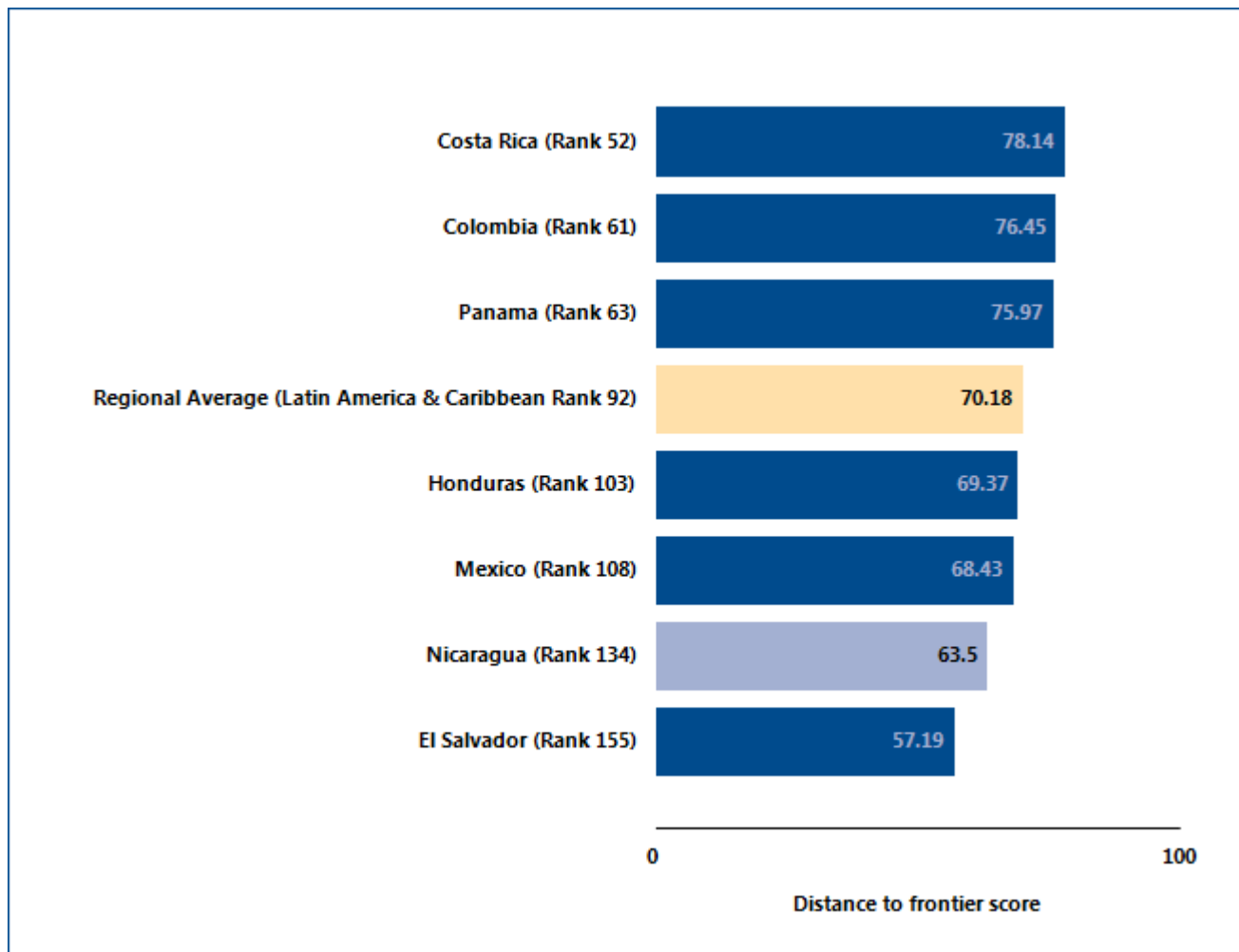
Source: *Doing Business* database.

DEALING WITH CONSTRUCTION PERMITS

Globally, Nicaragua stands at 134 in the ranking of 189 economies on the ease of dealing with construction permits (figure 3.2). The rankings for comparator economies and the regional average ranking provide

other useful information for assessing how easy it is for an entrepreneur in Nicaragua to legally build a warehouse.

Figure 3.2 How Nicaragua and comparator economies rank on the ease of dealing with construction permits



Source: Doing Business database.

DEALING WITH CONSTRUCTION PERMITS

What are the details?

The indicators reported here for Nicaragua are based on a set of specific procedures—the steps that a company must complete to legally build a warehouse—identified by *Doing Business* through information collected from experts in construction licensing, including architects, civil engineers, construction lawyers, construction firms, utility service providers and public officials who deal with building regulations. These procedures are those that apply to a company and structure matching the standard assumptions used by *Doing Business* in collecting the data (see the section in this chapter on what the indicators cover).

BUILDING A WAREHOUSE

Estimated cost of construction : **NIO 2,222,361**

City : **Managua**

The procedures, along with the associated time and cost, are summarized below.

Table 3.2 Summary of time, cost and procedures for dealing with construction permits in Nicaragua -

No.	Procedure	Time to complete	Cost to complete
1	<p>Request and obtain consultations with Municipality of Managua (Alcaldía de Managua - ALMA) about the urban plans</p> <p>It is common practice to have an initial consultation with the Technical Urban Planning Committee (Comité Técnico Urbanístico) to verify all conditions before submitting any document.</p> <p><i>Agency: Municipality of Managua (Alcaldía de Managua – ALMA)</i></p>	7 days	no charge
2	<p>Request and obtain the land use certificate (constancia de uso de suelo) from the Municipality of Managua</p> <p>After the certificate is received, a record number is created (to be used for the following procedures until the project is approved). The documents to be submitted at this stage are an application form, a copy of the location map, a site map, and the cadastral number of the property.</p> <p>If BuildCo does not agree with the decision, an appeal may be filed with the Technical Urban Planning Committee (Comité Técnico Urbanístico).</p> <p><i>Agency: Municipality of Managua (Alcaldía de Managua – ALMA)</i></p>	30 days	NIO 500
3	<p>Request feasibility analysis from ENACAL</p> <p>A feasibility analysis from ENACAL is required to determine whether the site can be connected to water and sewerage services. If no sewage system exists, an alternative would be a treatment system approved by the MARENA (Environmental Impact Assessment, Ministry of the Environment and Natural Resources).</p> <p>Measurement of pressures at each coupling point - NIO 2,000 Gauging sewage in each probably discharge point: NIO 3,000 Total = 5,000</p>	15 days	NIO 5,000

No.	Procedure	Time to complete	Cost to complete
	<p>The costs are based on Resolution No. CD-RT-028-2008 published in Official Gazette No. 212 of November 4, 2008 published in Official Gazette No. 212 of November 4, 2008</p> <p>The documents to be submitted are an application form, the land use certificate, a project description (physical modulation and activities), a plot plan on a scale of 1:10,000, the water demand and use statement, and specifications of the inflow rate and the sewage characteristics.</p> <p>The ENACAL approval certificate covers the project conceptualization and indicates that the project is compliant with the standards and regulations. The required documents are a project identification title page, topographic maps, an urban development plan, an existing infrastructure plan, design drawings, detail drawings, and a descriptive report.</p> <p><i>Agency: ENACAL</i></p>		
4	<p>* Request feasibility analysis from Union Fenosa</p> <p>A feasibility analysis from the Union FENOSA is required to determine whether the site can be connected to the electrical network. The following documents are needed: the (original) location map, a specification of the electrical capacity to be installed, and the estimated start date of construction work.</p> <p>Moreover, Union FENOSA provides a review, design approval, and authorization, and issues a decision stating that the proposed project conforms with the Manual of Norms of Construction of Distribution (Manual de Normas de Construcción de Distribución) of the Unión FENOSA, the electrical power supply company. The following documents are required:</p> <ul style="list-style-type: none"> • Design license • Electrical specifications • Stack-out sheet • List of materials • Project drawings • Photocopy of the electrical power and light contract • Photocopy of the feasibility certificate <p><i>Agency: Union Fenosa</i></p>	14 days	no charge
5	<p>Request and obtain preliminary design approval from the Municipality of Managua</p> <p>BuildCo must obtain an approval stating that the proposed preliminary designs conform to the Regulating Plan of the Municipality of Managua and to the land-use certificate.</p> <p>The required documents are the land-use certificate; a notarized deed</p>	25 days	NIO 1,000

No.	Procedure	Time to complete	Cost to complete
	<p>certifying ownership of the land; the feasibility analyses by the Nicaraguan Institute of Energy (INE) and the Nicaraguan Company of Water and Sewage (ENACAL); a local fault study endorsed by the Nicaraguan Institute of Territorial Studies INETER, if required by the land use certificate; and two sets of maps, each consisting of a location map on a scale of 1:10,000 (a site map on a scale of 1:10,000, 1:500, or 1:200 and a contour map); an architectural layout; exterior work drawings; and area frames.</p> <p><i>Agency: Municipality of Managua (Alcaldía de Managua – ALMA)</i></p>		
6	<p>Request and obtain project approval at the Municipality of Managua</p> <p>A project approval is a decision stating that the project conforms to the Regulating Plan of the Municipality of Managua. The fee for obtaining the approval is NIO 3.00 per sq. m., and payment can be made either in cash or in two equal installments. The required documents are three sets of plans and the approved preliminary designs.</p> <p>The following documents are required:</p> <ul style="list-style-type: none"> Letter of request for service Public deed duly registered Preliminary Design approved Two sets of plans Memory calculation of the drainage system Detailed Project Budget Detailed Project Programming Technical approval issued by ENACAL and UNION FENOSA <p><i>Agency: Municipality of Managua (Alcaldía de Managua – ALMA)</i></p>	30 days	NIO 3,902
7	<p>Request and obtain approval from Dirección General de Bomberos (DGB)</p> <p>Indoor electrical layout drawings must be reviewed and be found to conform to all fire protection standards. For construction projects with commercial and service purposes, the fee is US\$ 0.50 per sq. m. (15-05-13 La Gaceta-Diario Oficial)</p> <p>The required documents are electrical installation layouts, fire protection system plans, safety measures, or plans provided for the construction work. Because the national firefighting system (SINACOI) no longer exists, the institution in charge of this procedure is now Dirección General de Bomberos (DGB).</p> <p><i>Agency: Dirección General de Bomberos (DGB)</i></p>	15 days	USD 650

No.	Procedure	Time to complete	Cost to complete
8	<p>Request and obtain building permit from the Municipality of Managua</p> <p>The building permit authorizes the start of construction.</p> <p>The cost of a building permit includes a tax of 1.1% of the total market value of the construction. This tax must be paid in full at the start of construction work.</p> <p>Buildings are also subject to an inspection fee, as follows: -NIO 2.00 per sq. m. for areas from 101 to 200 sq. m. -NIO 3.00 per sq. m. for areas from 201 to 1,000 sq. m. -NIO 4.00 per sq. m. for areas from 1,001 sq m and above (in the case considered here, NIO 4.00 x 1,300.6 = NIO 5202.4).</p> <p>Therefore, 1.1%* warehouse value + 4 * sq m. = NIO 29,648.4</p> <p>The required documents are a project approval, an annual real estate tax (solvencia de bienes inmuebles), the registration number with ALMA (the business registration), a tax clearance certificate (solvencia municipal) for the project owner and builder, a builder's license granted by the Ministry of Transportation and Infrastructure (Ministerio de Transporte e Infraestructura, MTI), the builder's signature on the construction plans, bank guarantees, and official payment receipts. The building permit carries the same weight as a public deed.</p> <p>Inspections may occur during construction. However, these are rare due to a shortage of inspectors. Even if an inspection is carried out, the inspector would simply verify that the building permit is valid.</p> <p><i>Agency: Municipality of Managua (Alcaldía de Managua – ALMA), One-Stop Shop</i></p>	20 days	NIO 29,648
9	<p>Request fire inspection</p> <p>The cost of a fire and electricity inspection is included in the inspection fee, which is paid at the Dirección General de Bomberos (DGB). A site visit may be scheduled, but it is not a rigid procedure.</p> <p><i>Agency: Dirección General de Bomberos (DGB)</i></p>	1 day	no charge
10	<p>Receive fire inspection</p> <p><i>Agency: Dirección General de Bomberos (DGB)</i></p>	1 day	no charge
11	<p>* Request and connect to water and sewage services</p> <p>This cost covers the installation and can be higher or lower depending on a possible rupture of pipelines.</p>	45 days	NIO 3,000

No.	Procedure	Time to complete	Cost to complete
	<p>Agency: ENACAL (Empresa Nicaraguense de Acueductos y Alcantarillados), Municipality of Managua (Alcaldía de Managua – ALMA)</p>		
12	<p>Receive inspection from the Municipality of Managua</p> <p>The municipal inspection is a random inspection that may occur at least once during the 30-week construction period. Thus, no request is needed. An inspection report is drafted and provided to BuildCo. The construction work is not stopped during the inspection, and no costs are associated with this procedure.</p> <p>Agency: Municipality of Managua (Alcaldía de Managua – ALMA)</p>	1 day	no charge
13	<p>Receive inspection from the Ministry of Labor</p> <p>Inspection by the Ministry of Labor is a random inspection that may occur at least once during the 30-week construction period. Thus, no request is needed. An inspection report is drafted and provided to the company. The construction work is not stopped during the inspection, and no costs are associated with this procedure.</p> <p>Agency: Ministry of Labor</p>	1 day	no charge
14	<p>Receive inspection from the General Directorate of Hygiene and Occupational Safety of Ministry of Labor</p> <p>Inspection from the General Directorate of Hygiene and Occupational Safety of Ministry of Labor is a random inspection that may occur at least once during the 30-week construction period. Thus, no request is needed. An inspection report is drafted and provided to the company. The construction is not stopped during the inspection, and no costs are associated with this procedure.</p> <p>Agency: General Directorate of Hygiene and Occupational Safety of Ministry of Labor</p>	1 day	no charge
15	<p>Receive inspection from the National Social Security Institute</p> <p>Inspection by the National Social Security Institute is a random inspection that may occur at least once during the 30-week construction period. Thus, no request is needed. An inspection report is drafted and provided to the company. The construction work is not stopped during the inspection, and no costs are associated with this procedure.</p> <p>Agency: National Social Security Institute</p>	1 day	no charge

No.	Procedure	Time to complete	Cost to complete
16	Register the building with the Real Estate Appraisal Office <i>Agency: Real Estate Appraisal Office (Avalúo de Bienes Inmuebles), Municipality of Managua (Alcaldía de Managua – ALMA)</i>	15 days	no charge

* Takes place simultaneously with another procedure.

Note: Online procedures account for 0.5 days in the total time calculation.

Source: *Doing Business* database.

GETTING ELECTRICITY

Access to reliable and affordable electricity is vital for businesses. To counter weak electricity supply, many firms in developing economies have to rely on self-supply, often at a prohibitively high cost. Whether electricity is reliably available or not, the first step for a customer is always to gain access by obtaining a connection.

What do the indicators cover?

Doing Business records all procedures required for a local business to obtain a permanent electricity connection and supply for a standardized warehouse, as well as the time and cost to complete them. These procedures include applications and contracts with electricity utilities, clearances from other agencies and the external and final connection works. The ranking of economies on the ease of getting electricity is determined by sorting their distance to frontier scores for getting electricity. These scores are the simple average of the distance to frontier scores for each of the component indicators. To make the data comparable across economies, several assumptions are used.

The warehouse:

- Is owned by a local entrepreneur, located in the economy's largest business city, in an area where other warehouses are located. For the 11 economies with a population of more than 100 million, data for a second city have been added.
- Is not in a special economic zone where the connection would be eligible for subsidization or faster service.
- Is located in an area with no physical constraints (ie. property not near a railway).
- Is a new construction being connected to electricity for the first time.
- Is 2 stories, both above ground, with a total surface of about 1,300.6 square meters (14,000 square feet), is built on a plot of 929 square meters (10,000 square feet), is used for storage of refrigerated goods

The electricity connection:

- Is 150 meters long and is a 3-phase, 4-wire Y, 140-kilovolt-ampere (kVA) (subscribed capacity) connection.

WHAT THE GETTING ELECTRICITY INDICATORS MEASURE

Procedures to obtain an electricity connection (number)

- Submitting all relevant documents and obtaining all necessary clearances and permits
- Completing all required notifications and receiving all necessary inspections
- Obtaining external installation works and possibly purchasing material for these works
- Concluding any necessary supply contract and obtaining final supply

Time required to complete each procedure (calendar days)

- Is at least 1 calendar day
- Each procedure starts on a separate day
- Does not include time spent gathering information
- Reflects the time spent in practice, with little follow-up and no prior contact with officials

Cost required to complete each procedure (% of income per capita)

- Official costs only, no bribes
- Excludes value added tax
- Is to either the low-voltage or the medium-voltage distribution network and either overhead or underground, whichever is more common in the area where the warehouse is located. Included only negligible length in the customer's private domain.
- Requires crossing of a 10-meter road but all the works are carried out in a public land, so there is no crossing into other people's private property.
- Involves installing one electricity meter. The monthly electricity consumption will be 26880 kilowatt hour (kWh). The internal electrical wiring has been completed.

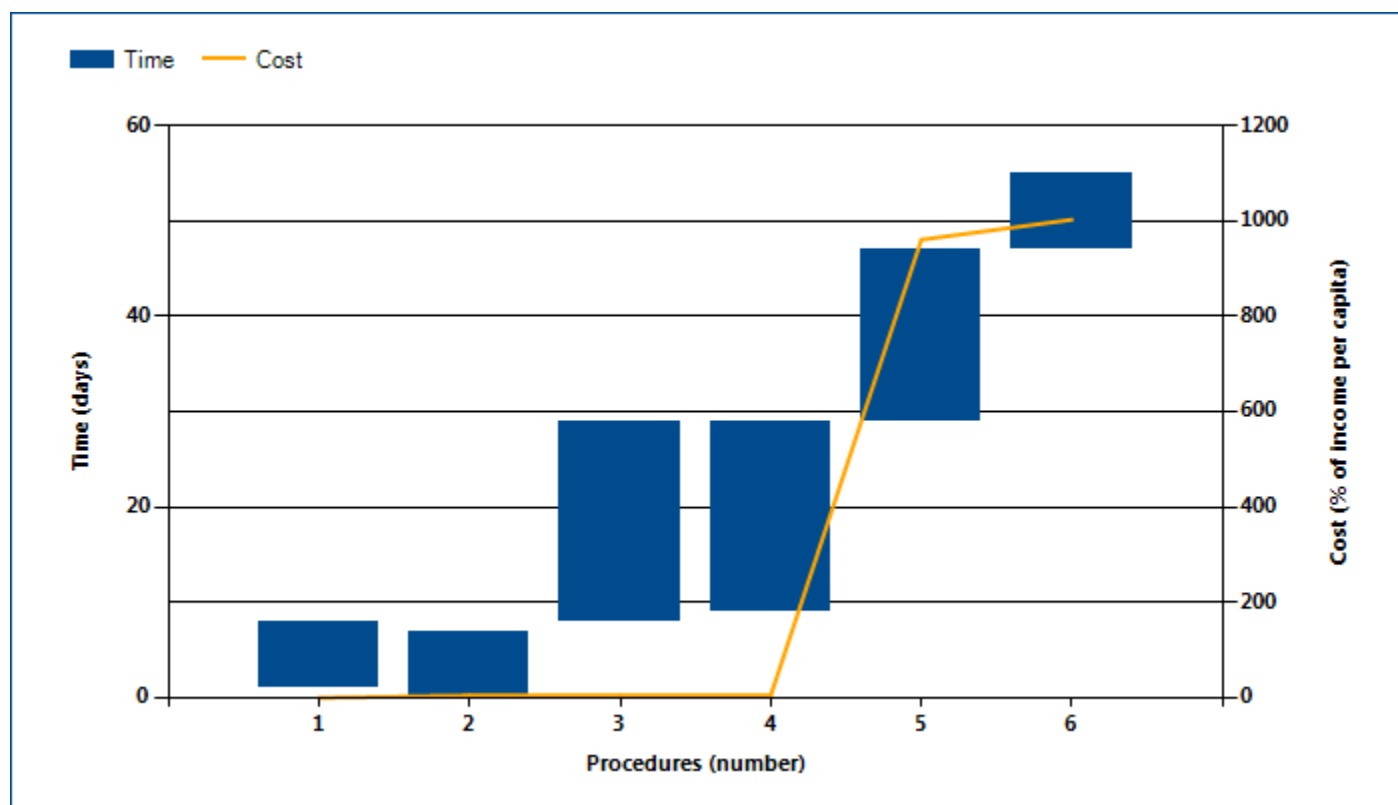
GETTING ELECTRICITY

Where does the economy stand today?

What does it take to obtain a new electricity connection in Nicaragua? According to data collected by *Doing Business*, getting electricity there requires 6.0 procedures, takes 55.0 days and costs 1003.4% of income per capita (figure 4.1).

Most indicator sets refer to a case scenario in the largest business city of an economy, except for 11 economies for which the data are a population-weighted average of the 2 largest business cities. See the chapter on distance to frontier and ease of doing business ranking at the end of this profile for more details.

Figure 4.1 What it takes to obtain an electricity connection in Nicaragua -



Note: Time shown in the figure above may not reflect simultaneity of procedures. For more information on the methodology of the getting electricity indicators, see the *Doing Business* website (<http://www.doingbusiness.org>). For details on the procedures reflected here, see the summary at the end of this chapter.

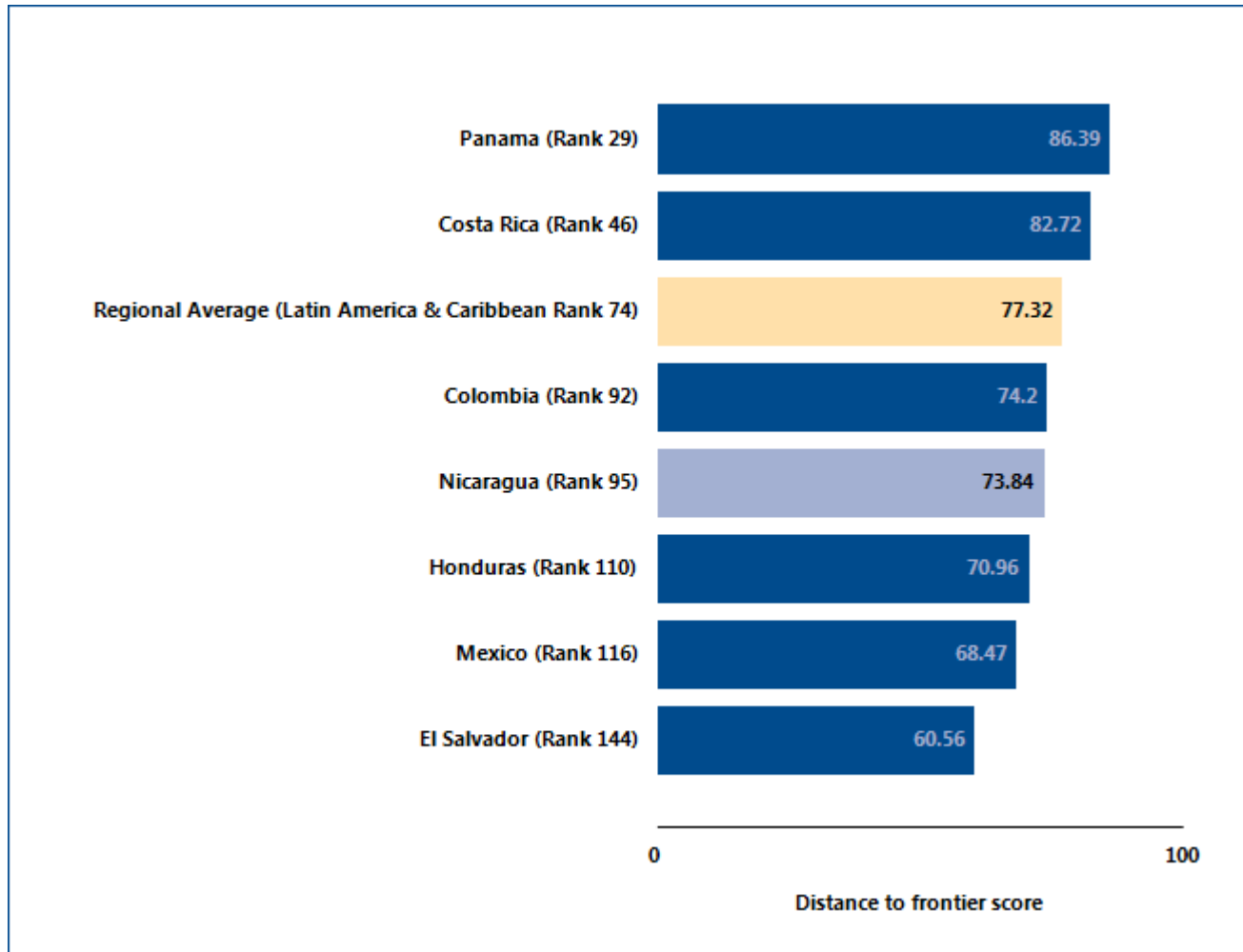
Source: *Doing Business* database.

GETTING ELECTRICITY

Globally, Nicaragua stands at 95 in the ranking of 189 economies on the ease of getting electricity (figure 4.2). The rankings for comparator economies and the regional

average ranking provide another perspective in assessing how easy it is for an entrepreneur in Nicaragua to connect a warehouse to electricity.

Figure 4.2 How Nicaragua and comparator economies rank on the ease of getting electricity



Source: Doing Business database.

GETTING ELECTRICITY

Obtaining an electricity connection is essential to enable a business to conduct its most basic operations. In many economies the connection process is complicated by the multiple laws and regulations involved—covering service quality, general safety, technical standards, procurement practices and internal wiring installations. In an effort to

ensure safety in the connection process while keeping connection costs reasonable, governments around the world have worked to consolidate requirements for obtaining an electricity connection. What reforms in getting electricity has *Doing Business* recorded in Nicaragua (table 4.1)?

Table 4.1 How has Nicaragua made getting electricity easier—or not?

By *Doing Business* report year from DB2010 to DB2015

DB year	Reform
DB2014	Nicaragua reduced the time required for getting electricity by increasing efficiency in granting approval of the connection design and by informing the customer in advance what the amount of the security deposit will be.

Source: *Doing Business* database.

GETTING ELECTRICITY

What are the details?

The indicators reported here for Nicaragua are based on a set of specific procedures—the steps that an entrepreneur must complete to get a warehouse connected to electricity by the local distribution utility—identified by *Doing Business*. Data are collected from the distribution utility, then completed and verified by electricity regulatory agencies and independent professionals such as electrical engineers, electrical contractors and construction companies. The electricity distribution utility surveyed is the one serving the area (or areas) in which warehouses are located. If there is a choice of distribution utilities, the one serving the largest number of customers is selected.

OBTAINING AN ELECTRICITY CONNECTION

Name of utility: DISNORTE - DISSUR

City: Managua

The procedures are those that apply to a warehouse and electricity connection matching the standard assumptions used by *Doing Business* in collecting the data (see the section in this chapter on what the indicators cover). The procedures, along with the associated time and cost, are summarized below.

Table 4.2 Summary of time, cost and procedures for getting electricity in Nicaragua -

No.	Procedure	Time to complete	Cost to complete
1	<p>The customer submits an informal application with DISNORTE-DISSUR to establish the feasibility of the project</p> <p>The customer submits a first informal application to DISNORTE-DISSUR indicating the required electricity load and the location of the business that is to be connected. The Planning Department of the utility will prepare a feasibility study based on its own plans for the primary distribution lines in Managua and the existing demand in the system. No inspection of the site is necessary if the connection point is within 150 meters.</p> <p><i>Agency: DISNORTE - DISSUR</i></p>	7 calendar days	NIO 0
2	<p>* The client obtains a compliance certificate regarding the internal wiring from the official or the voluntary Fire Department (Dirección General de Bomberos and Benemérito Cuerpo de Bomberos, respectively)</p> <p>The customer has to obtain a certification of the internal wiring installations from the Fire Department. The Fire Department (Dirección General de Bomberos) certifies that the internal wiring has been done in accordance with the relevant standards for buildings as specified by the ""Norma CIEN"" (Código de instalaciones Eléctricas de Nicaragua). This certification has to be obtained before applying for a new electricity connection with the utility.</p> <p>In order to prepare the certification of the internal wiring the Fire Department (Dirección General de Bomberos) will visit the site.</p>	7 calendar days	USD 86.25

No.	Procedure	Time to complete	Cost to complete
	<p>Agency: <i>Dirección General de Bomberos</i></p>		
3	<p>The customer submits in person the design and the service application at DISNORTE-DISSUR and awaits that the utility approves the design plans</p> <p>The customer submits the service application together with the designs in person. The following documents have to accompany the application:</p> <ul style="list-style-type: none"> • Name, address and telephone number of the applicant • Photocopy of national identity card or power of attorney • Photocopy of the property title or rental contract • Inspection certificate from the Fire Department indicating that the internal wiring installation complies with the norms established by the CIEN (Código de instalaciones Eléctricas de Nicaragua). • Photocopy of the social security number or business registration number of the customer (RUC - Registro único del contribuyente) • Photocopy of the company registration of the firm (used to assess which electricity tariff is applicable). <p>DISNORTE-DISSUR has a list of approved firms that will realize the design of the actual connection works. In order to be part of the list, firms have to be approved every year by the utility. In most cases the design is done by the same firm that also will later do the works. The utility will also approve the designs that have been prepared by the approved firm and work hand in hand with the executing firm.</p> <p>Agency: <i>DISNORTE - DISSUR</i></p>	21 calendar days	NIO 0
4	<p>* Dissnorte-Dissur inspects the site to validate the design of the works</p> <p>The utility inspects the site to approve the design</p> <p>Agency: <i>DISNORTE - DISSUR</i></p>	1 calendar day	NIO 0

No.	Procedure	Time to complete	Cost to complete
5	<p>The private firm hired by the customer to prepare the design for the connection works carries out the actual works'</p> <p>The works are done according to the relevant standards. They can be done either by a construction firm or an approved electrical design firm. The customer can decide who he wants to delegate the works to. The works are supervised by the technical department of the utility.</p> <p><i>Agency: Contratista Privado</i></p>	18 calendar days	USD 17,025
6	<p>The customer signs the supply contract and DISNORTE-DISSUR installs the meter and energizes the project</p> <p>Once the works are finalized, the meter and metering accessories are installed by the distribution utility and remain property of the utility. The meter is installed in a location that can be accessed from outside the premise of the customer for inspections and meter reading. Otherwise the customer has to given a written consent that the distribution utility can enter the premise.</p> <p>The customer has to deposit a security that is calculated on the basis of one month of the future consumption of the customer. The security deposit is returned with interest (average deposit rate in the country) after 18 months if the customer had no late payment in this period.</p> <p><i>Agency: DISNORTE - DISSUR</i></p>	8 calendar days	NIO 18,727.76

* Takes place simultaneously with another procedure.

Source: *Doing Business* database.

REGISTERING PROPERTY

Ensuring formal property rights is fundamental. Effective administration of land is part of that. If formal property transfer is too costly or complicated, formal titles might go informal again. And where property is informal or poorly administered, it has little chance of being accepted as collateral for loans—limiting access to finance.

What do the indicators cover?

Doing Business records the full sequence of procedures necessary for a business to purchase property from another business and transfer the property title to the buyer's name. The transaction is considered complete when it is opposable to third parties and when the buyer can use the property, use it as collateral for a bank loan or resell it. The ranking of economies on the ease of registering property is determined by sorting their distance to frontier scores for registering property. These scores are the simple average of the distance to frontier scores for each of the component indicators. To make the data comparable across economies, several assumptions about the parties to the transaction, the property and the procedures are used.

The parties (buyer and seller):

- Are limited liability companies, 100% domestically and privately owned and perform general commercial activities.
- Are located in the economy's largest business city².
- Have 50 employees each, all of whom are nationals.

The property (fully owned by the seller):

- Has a value of 50 times income per capita. The sale price equals the value.
- Is registered in the land registry or cadastral, or both, and is free of title disputes.
- Property will be transferred in its entirety.

WHAT THE REGISTERING PROPERTY INDICATORS MEASURE

Procedures to legally transfer title on immovable property (number)

Preregistration (for example, checking for liens, notarizing sales agreement, paying property transfer taxes)

Registration in the economy's largest business city²

Postregistration (for example, filing title with the municipality)

Time required to complete each procedure (calendar days)

Does not include time spent gathering information

Each procedure starts on a separate day. Procedures that can be fully completed online are recorded as ½ day.

Procedure considered completed once final document is received

No prior contact with officials

Cost required to complete each procedure (% of property value)

Official costs only, no bribes

No value added or capital gains taxes included

- Is located in a periurban commercial zone, and no rezoning is required.
- Has no mortgages attached, has been under the same ownership for the past 10 years.
- Consists of 557.4 square meters (6,000 square feet) of land and a 10-year-old, 2-story warehouse of 929 square meters (10,000 square feet). The warehouse is in good condition and complies with all safety standards, building codes and legal requirements. There is no heating system.

² For the 11 economies with a population of more than 100 million, data for a second city have been added.

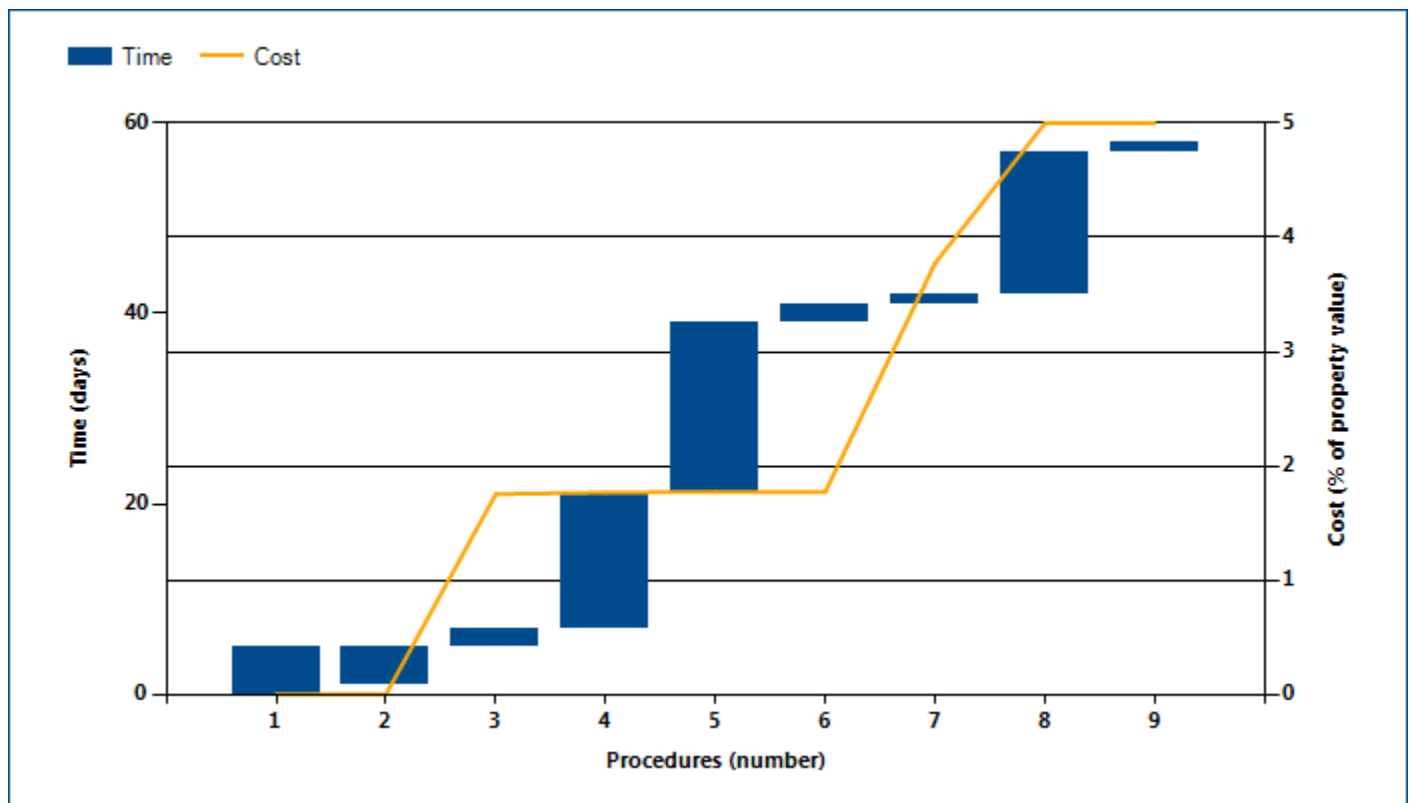
REGISTERING PROPERTY

Where does the economy stand today?

What does it take to complete a property transfer in Nicaragua? According to data collected by *Doing Business*, registering property there requires 9.0 procedures, takes 58.0 days and costs 5.0% of the property value (figure 5.1).

Most indicator sets refer to a case scenario in the largest business city of an economy, except for 11 economies for which the data are a population-weighted average of the 2 largest business cities. See the chapter on distance to frontier and ease of doing business ranking at the end of this profile for more details.

Figure 5.1 What it takes to register property in Nicaragua -



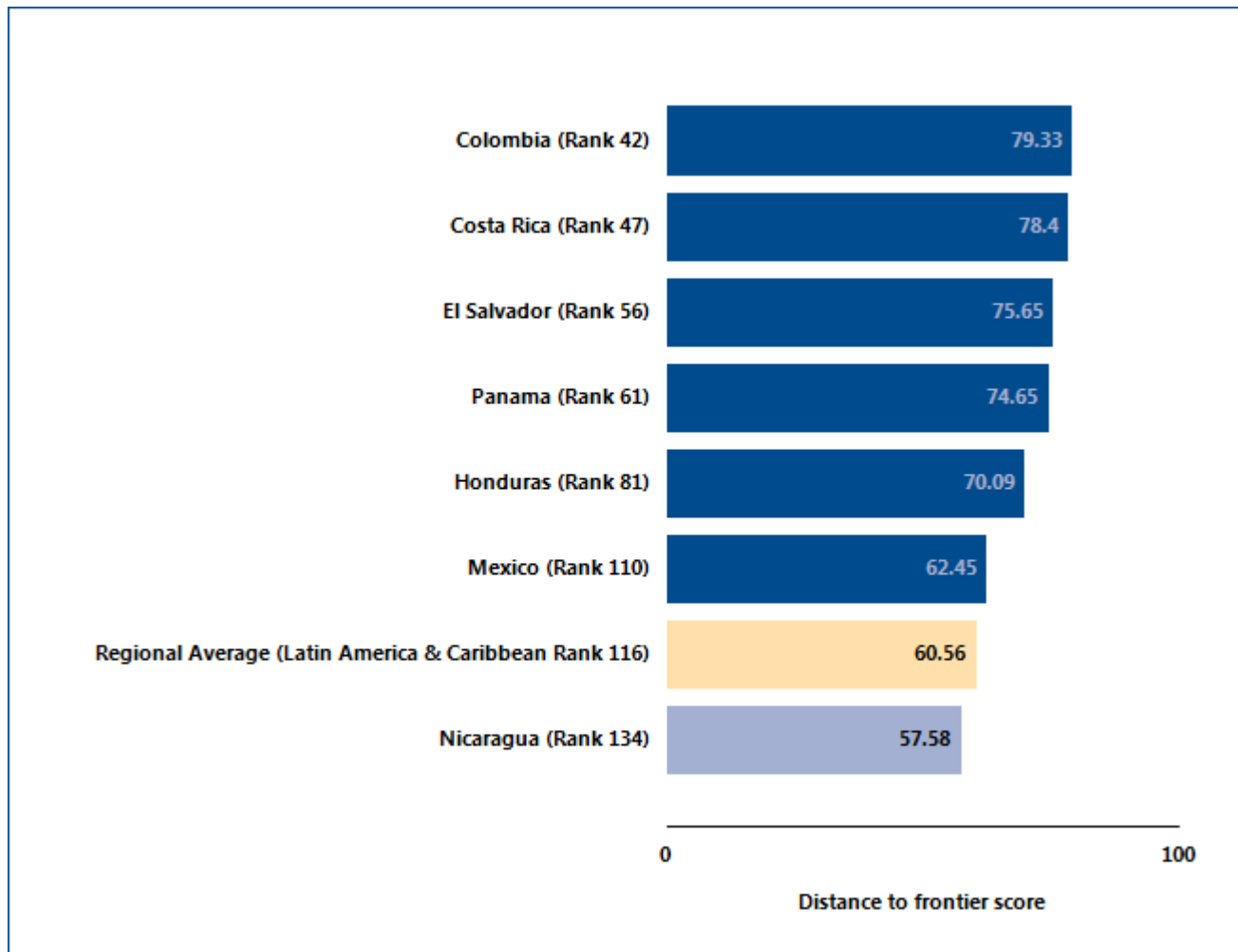
Note: Time shown in the figure above may not reflect simultaneity of procedures. Online procedures account for 0.5 days in the total time calculation. For more information on the methodology of the registering property indicators, see the *Doing Business* website (<http://www.doingbusiness.org>). For details on the procedures reflected here, see the summary at the end of this chapter. Source: *Doing Business* database.

REGISTERING PROPERTY

Globally, Nicaragua stands at 134 in the ranking of 189 economies on the ease of registering property (figure 5.2). The rankings for comparator economies and the

regional average ranking provide other useful information for assessing how easy it is for an entrepreneur in Nicaragua to transfer property.

Figure 5.2 How Nicaragua and comparator economies rank on the ease of registering property



Source: Doing Business database.

REGISTERING PROPERTY

Economies worldwide have been making it easier for entrepreneurs to register and transfer property—such as by computerizing land registries, introducing time limits for procedures and setting low fixed fees. Many have cut

the time required substantially—enabling buyers to use or mortgage their property earlier. What property registration reforms has *Doing Business* recorded in Nicaragua (table 5.1)?

Table 5.1 How has Nicaragua made registering property easier—or not?
By *Doing Business* report year from DB2010 to DB2015

DB year	Reform
DB2012	Nicaragua made transferring property more efficient by introducing a fast-track procedure for registration.

Note: For information on reforms in earlier years (back to DB2005), see the *Doing Business* reports for these years, available at <http://www.doingbusiness.org>.

Source: *Doing Business* database.

REGISTERING PROPERTY

What are the details?

The indicators reported here are based on a set of specific procedures—the steps that a buyer and seller must complete to transfer the property to the buyer’s name—identified by *Doing Business* through information collected from local property lawyers, notaries and property registries. These procedures are those that apply to a transaction matching the standard assumptions used by *Doing Business* in collecting the data (see the section in this chapter on what the indicators cover).

STANDARD PROPERTY TRANSFER	
Property value:	NIO 2,222,361
City:	Managua

The procedures, along with the associated time and cost, are summarized below.

Table 5.2 Summary of time, cost and procedures for registering property in Nicaragua

No.	Procedure	Time to complete	Cost to complete
1	<p>Obtain a non-encumbrance certificate ("Libertad de gravamen") from Land registry</p> <p>The non-encumbrance certificate (libertad de gravamen) is an official document that shows all the encumbrances that the real property currently has and the owners of the real property since its first annotation or since the time that the interested person wants to know. The certificate must be obtained by the seller before starting the transaction formally. The "certificado a manera de titulo" (cost of NIO 100) can also be obtained from the registry, if the original title has been lost. The "certificado de historia registral" (cost NIO 100 + NIO 50 for every additional past transaction) that list all previous transactions related to the property can also be obtained.</p> <p><i>Agency: Land registry (Registro Público de la Propiedad Inmueble y Mercantil)</i></p>	5 days (simultaneous with Procedure 2)	NIO 100
2	<p>* Obtain tax clearance from the Municipality (Solvencia Municipal)</p> <p>A tax clearance certificate (Municipal Solvency) must be obtained by the seller from the municipality. The timing of 1 day assumes that the seller is up-to-date with tax payments on the property, and that he pays a fee of NIO 20. If he were to wait till the next business day to obtain it, it would be free of charge.</p> <p><i>Agency: Municipality</i></p>	1 day (simultaneous with Procedure 1)	NIO 20

No.	Procedure	Time to complete	Cost to complete
3	<p>A notary prepares and signs the public deed</p> <p>A notary public prepares and notarizes the public deed of purchase and sell between seller and buyer. The preparation of the deed is an exclusive act of the notary. The notary will review all past transactions from the record book on the Land Registry with the documents obtained above, to verify the ownership of the property. In practice, the notaries estimate their fees for this type of contract based on a percent, which varies between 1.5 and 2% of the property value according to agreement between the parties and notary.</p> <p><i>Agency: Notary</i></p>	2 days	1.5 – 2.0% of property value (notary's fees)
4	<p>Obtain the Cadastre certificate at INETER</p> <p>INETER is the national cadastre and is in charge of surveying the land and keeping a database on the plots and boundaries. This certificate is necessary to obtain the cadastre valuation at the DGI</p> <p><i>Agency: INETER (National cadastre)</i></p>	2 weeks	NIO 300
5	<p>Obtain Cadastre valuation at the DGI</p> <p>Parties must obtain the Cadastre Certificate and request a valuation from an inspector. In practice, the Cadastre requires a special power granted to notaries or any other person when the interested parties cannot realize this Procedure. The parties can go to the Cadastre directly, in which case they do not need to present a special power. The Cadastre requests to see original property title (of the Seller). In case a special power is needed, the costs rise about C\$ 2,000 as the fees for the person who will go to the Cadastre, and C\$ 1,000 for the notary who will previously authorize and issue the special power.</p> <p><i>Agency: Cadastre</i></p>	14 – 21 days	Cadastral valuation constancy NIO 100
6	<p>Inspector visits property to assess value</p> <p>After the cadastral certificate is obtained, an inspector visits the property to assess the value. In practice, one picks up the inspector and drives him/her to the property. It will take the inspector about one week to write the report on the value.</p> <p><i>Agency: Tax agency (Catastro fiscal - Direccion General de Ingresos)</i></p>	2 to 3 days	NIO 20 (but must provide transportation to inspector)

No.	Procedure	Time to complete	Cost to complete
7	<p>Payment of Income/Transfer Tax</p> <p>Payment of Income/Transfer Tax at the Tax Administration Office, an agency of the Treasury Ministry. This percent is established depending on the Cadastre Value.</p> <p>The Cadastre value generally is not the same as the market price. For the payment of the transfer taxes, the fiscal authority takes as a base of calculation the highest value between the sale price in the public deed of purchase and Cadastral value.</p> <p>Fees of NIO 4 + 2 stamps of NIO 10 need to be paid to make the payment.</p> <p>The transfer tax rate of 1% was established by an injunction ("amparo") declaring the increase of the 2003 Ley de Queda Fiscal unconstitutional. An amendment to the Nicaraguan fiscal law entered into force on January 1st, 2010 (Law 712 published in the official Gazette No. 241 of December 21st 2009), changing the tax according to the following sliding scale, from 1% of the value of the property to the following percentages: 1% for properties with a value between US\$1.00 and US\$50,000.00, 2% for values between US\$50,000.01 and US\$100,000.00 and 3% for values above US\$100,000.01.</p> <p><i>Agency: Tax agency (Administracion de Rentas - Direccion General de Ingresos)</i></p>	1 day	<p>According to Article 87 of the new Tax, the property the transfer tax is calculated and paid as follows: 1% for properties with a value between USD1.00 and USD 50,000.00, 2% for values between USD 50,000.01 and USD 100,000.00 and 3% for values between USD 100,000.01 and USD 200,000.00 and 4% for values above USD 200,001. Fees of NIO 4 + 2 stamps of NIO 10 need to be paid to make the payment.</p>
8	<p>Apply for registration of the public deed at the Land Registry</p> <p>Parties file the public deed at the Land Registry for its proper registration. The amount is calculated based on 1% of the cadastral value, with a maximum fee of NIO 30,000. This payment is made directly in the branch of a commercial bank that is located inside the Land Registry Office. The notary applying for registration will charge C\$500 as fees. At submission, the request for transfer is recorded, signaling priority rights over the property. The registration of property transfers is very slow and can take longer than 90 days. When finalized, the Land registry will write in the original deed, the book and page where the transfer was recorded. This document is then returned to the notary with all the other certificates provided. The Land registry operates with paper documents. However, the sale deeds are scanned and almost all past records are digitalized in Managua. In the rest of the departments in the country, records are not always accessible digitally. Newer transactions (less than 1 year) are not always digitalized. Any person can access past deeds with computers at the Land registry at no cost. It is possible to track the status of the deed registration online through the website: www.registropublico.gob.ni/servicios/consultatramite.aspx.</p> <p><i>Agency: Real Estate Registry (Registro Público de la Propiedad Inmueble y Mercantil)</i></p>	15 days (expedited Procedure)	<p>1% of cadastral value (registration fee) + NIO 500 (Notary's fees) + 20% of the registration fee for the expedited Procedure</p>

No.	Procedure	Time to complete	Cost to complete
9	Apply for name change at Municipality The new owner needs to update the records at the municipal cadastre in order to be able to pay the real estate taxes. <i>Agency: Municipal cadastre</i>	1 day	no cost

* Takes place simultaneously with another procedure.

Note: Online procedures account for 0.5 days in the total time calculation.

Source: *Doing Business* database.

GETTING CREDIT

Two types of frameworks can facilitate access to credit and improve its allocation: credit information systems and borrowers and lenders in collateral and bankruptcy laws. Credit information systems enable lenders' rights to view a potential borrower's financial history (positive or negative)—valuable information to consider when assessing risk. And they permit borrowers to establish a good credit history that will allow easier access to credit. Sound collateral laws enable businesses to use their assets, especially movable property, as security to generate capital—while strong creditors' rights have been associated with higher ratios of private sector credit to GDP.

What do the indicators cover?

Doing Business assesses the sharing of credit information and the legal rights of borrowers and lenders with respect to secured transactions through 2 sets of indicators. The depth of credit information index measures rules and practices affecting the coverage, scope and accessibility of credit information available through a credit registry or a credit bureau. The strength of legal rights index measures whether certain features that facilitate lending exist within the applicable collateral and bankruptcy laws. *Doing Business* uses two case scenarios, Case A and Case B, to determine the scope of the secured transactions system, involving a secured borrower and a secured lender and examining legal restrictions on the use of movable collateral (for more details on each case, see the Data Notes section of the *Doing Business 2015* report). These scenarios assume that the borrower:

- Is a private limited liability company.
- Has its headquarters and only base of operations in the largest business city. For the 11 economies with a population of more than 100 million, data for a second city have been added.

WHAT THE GETTING CREDIT INDICATORS MEASURE

Strength of legal rights index (0–12)³

Rights of borrowers and lenders through collateral laws

Protection of secured creditors' rights through bankruptcy laws

Depth of credit information index (0–8)⁴

Scope and accessibility of credit information distributed by credit bureaus and credit registries

Credit bureau coverage (% of adults)

Number of individuals and firms listed in largest credit bureau as percentage of adult population

Credit registry coverage (% of adults)

Number of individuals and firms listed in credit registry as percentage of adult population

- Has up to 50 employees.
- Is 100% domestically owned, as is the lender.

The ranking of economies on the ease of getting credit is determined by sorting their distance to frontier scores for getting credit. These scores are the distance to frontier score for the strength of legal rights index and the depth of credit information index.

³ For the legal rights index, 2 new points are added in *Doing Business 2015* for new data collected to assess the overall legal framework for secured transactions and the functioning of the collateral registry.

⁴ For the credit information index, 2 new points are added in *Doing Business 2015* for new data collected on accessing borrowers' credit information online and availability of credit scores.

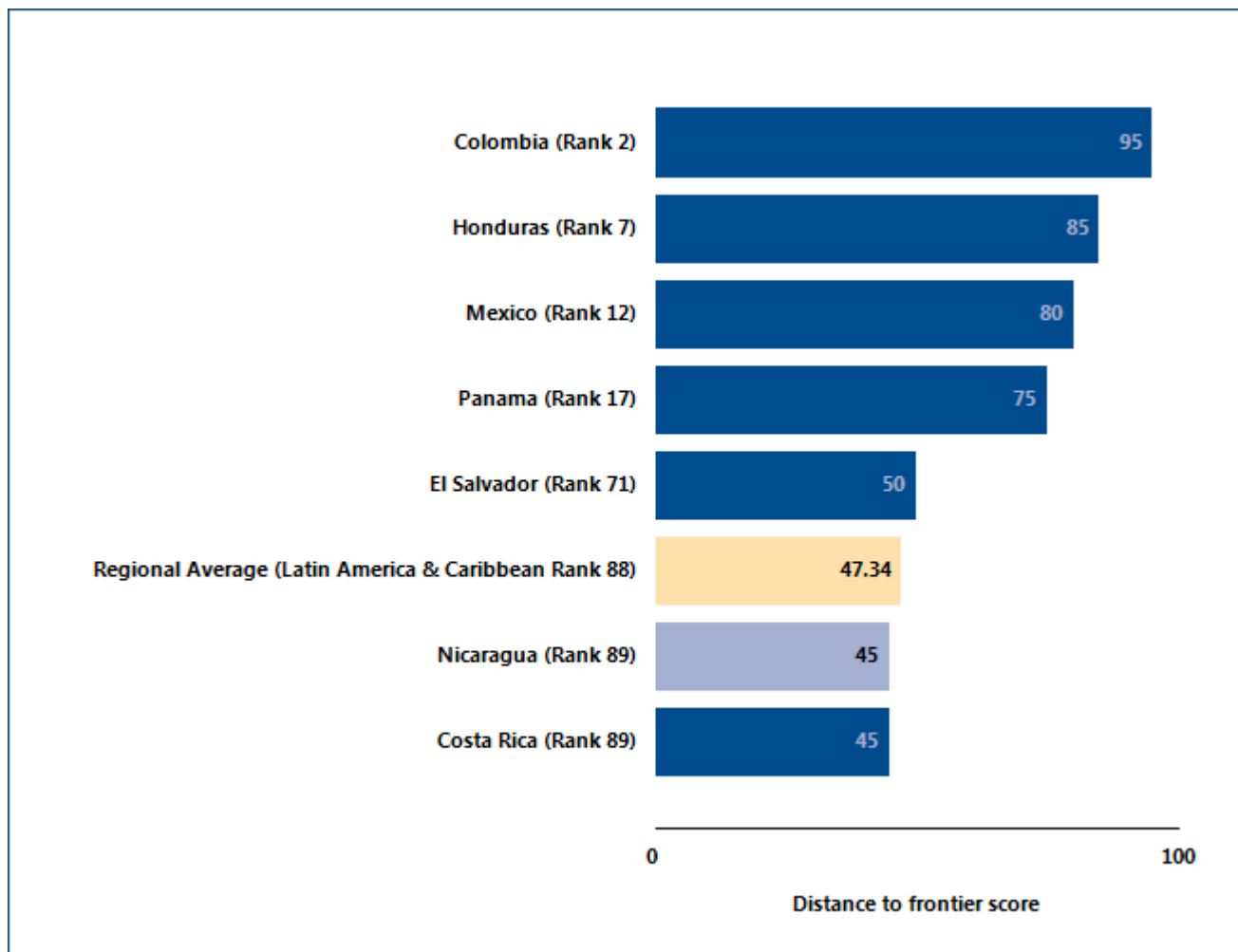
GETTING CREDIT

Where does the economy stand today?

How well do the credit information system and collateral and bankruptcy laws in Nicaragua facilitate access to credit? The economy has a score of 8 on the depth of credit information index and a score of 1 on the strength of legal rights index (see the summary of scoring at the end of this chapter for details). Higher scores indicate more credit information and stronger legal rights for borrowers and lenders.

Globally, Nicaragua stands at 89 in the ranking of 189 economies on the ease of getting credit (figure 6.1). The rankings for comparator economies and the regional average ranking provide other useful information for assessing how well regulations and institutions in Nicaragua support lending and borrowing.

Figure 6.1 How Nicaragua and comparator economies rank on the ease of getting credit



Source: Doing Business database.

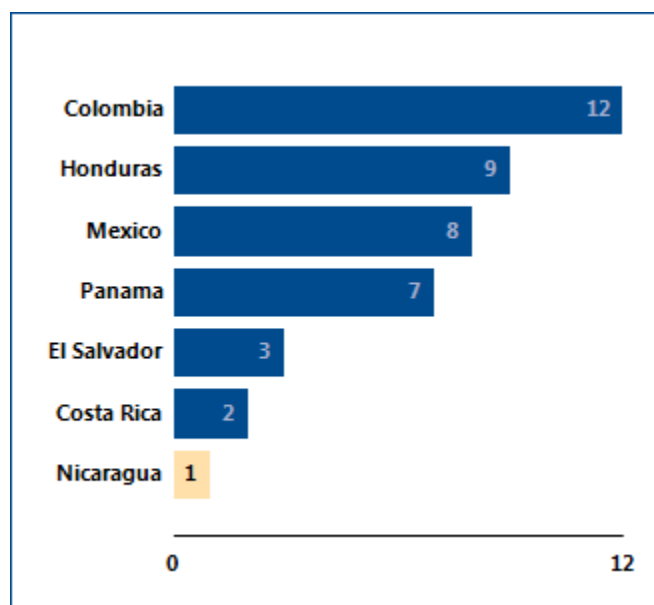
GETTING CREDIT

One way to put an economy’s score on the getting credit indicators into context is to see where the economy stands in the distribution of scores across economies. Figure 6.2 highlights the score on the strength of legal

rights index for Nicaragua and shows the scores for comparator economies as well as the regional average score. Figure 6.3 shows the same for the depth of credit information index.

Figure 6.2 How strong are legal rights for borrowers and lenders?

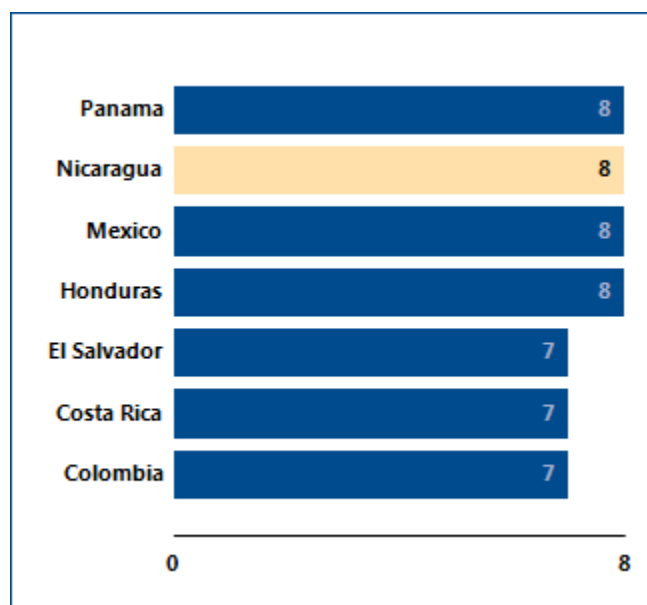
Economy scores on strength of legal rights index



Note: Higher scores indicate that collateral and bankruptcy laws are better designed to facilitate access to credit.
Source: Doing Business database.

Figure 6.3 How much credit information is shared—and how widely?

Economy scores on depth of credit information index



Note: Higher scores indicate the availability of more credit information, from either a credit registry or a credit bureau, to facilitate lending decisions. If the credit bureau or registry is not operational or covers less than 5% of the adult population, the total score on the depth of credit information index is 0.
Source: Doing Business database.

GETTING CREDIT

When economies strengthen the legal rights of lenders and borrowers under collateral and bankruptcy laws, and increase the scope, coverage and accessibility of credit

information, they can increase entrepreneurs' access to credit. What credit reforms has *Doing Business* recorded in Nicaragua (table 6.1)?

Table 6.1 How has Nicaragua made getting credit easier—or not?
By *Doing Business* report year from DB2010 to DB2015

DB year	Reform
DB2015	Nicaragua improved access to credit information by starting to provide credit scores to banks and financial institutions.

Note: For information on reforms in earlier years (back to DB2005), see the *Doing Business* reports for these years, available at <http://www.doingbusiness.org>.

Source: *Doing Business* database.

GETTING CREDIT

What are the details?

The getting credit indicators reported here for Nicaragua are based on detailed information collected in that economy. The data on credit information sharing are collected through a survey of a credit registry and/or credit bureau (if one exists). To construct the depth of credit information index, a score of 1 is assigned for each of 8 features of the credit registry or credit bureau (see summary of scoring below).

The data on the legal rights of borrowers and lenders are gathered through a survey of financial lawyers and verified through analysis of laws and regulations as well as public sources of information on collateral and bankruptcy laws. For the strength of legal rights index, a score of 1 is assigned for each of 10 aspects related to legal rights in collateral law and 2 aspects in bankruptcy law.

Strength of legal rights index (0–12)	Index score: 1
Does an integrated or unified legal framework for secured transactions that extends to the creation, publicity and enforcement of functional equivalents to security interests in movable assets exist in the economy?	No
Does the law allow businesses to grant a non possessory security right in a single category of movable assets, without requiring a specific description of collateral?	No
Does the law allow businesses to grant a non possessory security right in substantially all of its assets, without requiring a specific description of collateral?	No
May a security right extend to future or after-acquired assets, and may it extend automatically to the products, proceeds or replacements of the original assets?	No
Is a general description of debts and obligations permitted in collateral agreements; can all types of debts and obligations be secured between parties; and can the collateral agreement include a maximum amount for which the assets are encumbered?	No
Is a collateral registry in operation for both incorporated and non-incorporated entities, that is unified geographically and by asset type, with an electronic database indexed by debtor's name?	No
Does a notice-based collateral registry exist in which all functional equivalents can be registered?	No
Does a modern collateral registry exist in which registrations, amendments, cancellations and searches can be performed online by any interested third party?	No
Are secured creditors paid first (i.e. before tax claims and employee claims) when a debtor defaults outside an insolvency procedure?	Yes
Are secured creditors paid first (i.e. before tax claims and employee claims) when a business is liquidated?	No
Are secured creditors subject to an automatic stay on enforcement when a debtor enters a court-supervised reorganization procedure? Does the law protect secured creditors' rights by providing clear grounds for relief from the stay and/or sets a time limit for it?	No

Strength of legal rights index (0–12)	Index score: 1
Does the law allow parties to agree on out of court enforcement at the time a security interest is created? Does the law allow the secured creditor to sell the collateral through public auction and private tender, as well as, for the secured creditor to keep the asset in satisfaction of the debt?	No

Depth of credit information index (0–8)	Credit bureau	Credit registry	Index score: 8
Are data on both firms and individuals distributed?	Yes	Yes	1
Are both positive and negative credit data distributed?	Yes	Yes	1
Are data from retailers or utility companies - in addition to data from banks and financial institutions - distributed?	Yes	No	1
Are at least 2 years of historical data distributed? (Credit bureaus and registries that distribute more than 10 years of negative data or erase data on defaults as soon as they are repaid obtain a score of 0 for this component.)	Yes	No	1
Are data on loan amounts below 1% of income per capita distributed?	Yes	Yes	1
By law, do borrowers have the right to access their data in the credit bureau or credit registry?	Yes	Yes	1
Can banks and financial institutions access borrowers' credit information online (for example, through an online platform, a system-to-system connection or both)?	Yes	Yes	1
Are bureau or registry credit scores offered as a value-added service to help banks and financial institutions assess the creditworthiness of borrowers?	Yes	No	1

Note: Prior to *Doing Business 2015*, the depth of credit information index covered only the first 6 features listed above. An economy receives a score of 1 if there is a "yes" to either bureau or registry. If the credit bureau or registry is not operational or covers less than 5% of the adult population, the total score on the depth of credit information index is 0.

Coverage	Credit bureau (% of adults)	Credit registry (% of adults)
Number of firms	3,869	4,934
Number of individuals	1,542,002	612,773
Percent of total	40.7	16.2

Source: *Doing Business* database.

PROTECTING MINORITY INVESTORS

Protecting minority investors matters for the ability of companies to raise the capital they need to grow, innovate, diversify and compete. Effective regulations define related-party transactions precisely, promote clear and efficient disclosure requirements, require shareholder participation in major decisions of the company and set detailed standards of accountability for company insiders.

What do the indicators cover?

Doing Business measures the protection of minority investors from conflicts of interest through one set of indicators and shareholders' rights in corporate governance through another. The ranking of economies on the strength of minority investor protections is determined by sorting their distance to frontier scores for protecting minority investors. These scores are the simple average of the distance to frontier scores for the extent of conflict of interest regulation index and the extent of shareholder governance index. To make the data comparable across economies, a case study uses several assumptions about the business and the transaction.

The business (Buyer):

- Is a publicly traded corporation listed on the economy's most important stock exchange (or at least a large private company with multiple shareholders).
- Has a board of directors and a chief executive officer (CEO) who may legally act on behalf of Buyer where permitted, even if this is not specifically required by law.

The transaction involves the following details:

- Mr. James, a director and the majority shareholder of the company, proposes that the company purchase used trucks from another company he owns.
- The price is higher than the going price for used trucks, but the transaction goes forward.
- All required approvals are obtained, and all required disclosures made, though the transaction is prejudicial to Buyer.
- Shareholders sue the interested parties and the members of the board of directors.

WHAT THE PROTECTING MINORITY INVESTORS INDICATORS MEASURE

Extent of disclosure index (0–10)

Review and approval requirements for related-party transactions ; Disclosure requirements for related-party transactions

Extent of director liability index (0–10)

Ability of minority shareholders to sue and hold interested directors liable for prejudicial related-party transactions; Available legal remedies (damages, disgorgement of profits, fines, imprisonment, rescission of the transaction)

Ease of shareholder suits index (0–10)

Access to internal corporate documents; Evidence obtainable during trial and allocation of legal expenses

Extent of conflict of interest regulation index (0–10)

Sum of the extent of disclosure, extent of director liability and ease of shareholder indices, divided by 3

Extent of shareholder rights index (0-10.5)

Shareholders' rights and role in major corporate decisions

Strength of governance structure index (0-10.5)

Governance safeguards protecting shareholders from undue board control and entrenchment

Extent of corporate transparency index (0-9)

Corporate transparency on ownership stakes, compensation, audits and financial prospects

Extent of shareholder governance index (0–10)

Sum of the extent of shareholders rights, strength of governance structure and extent of corporate transparency indices, divided by 3

Strength of investor protection index (0–10)

Simple average of the extent of conflict of interest regulation and extent of shareholder governance indices

PROTECTING MINORITY INVESTORS

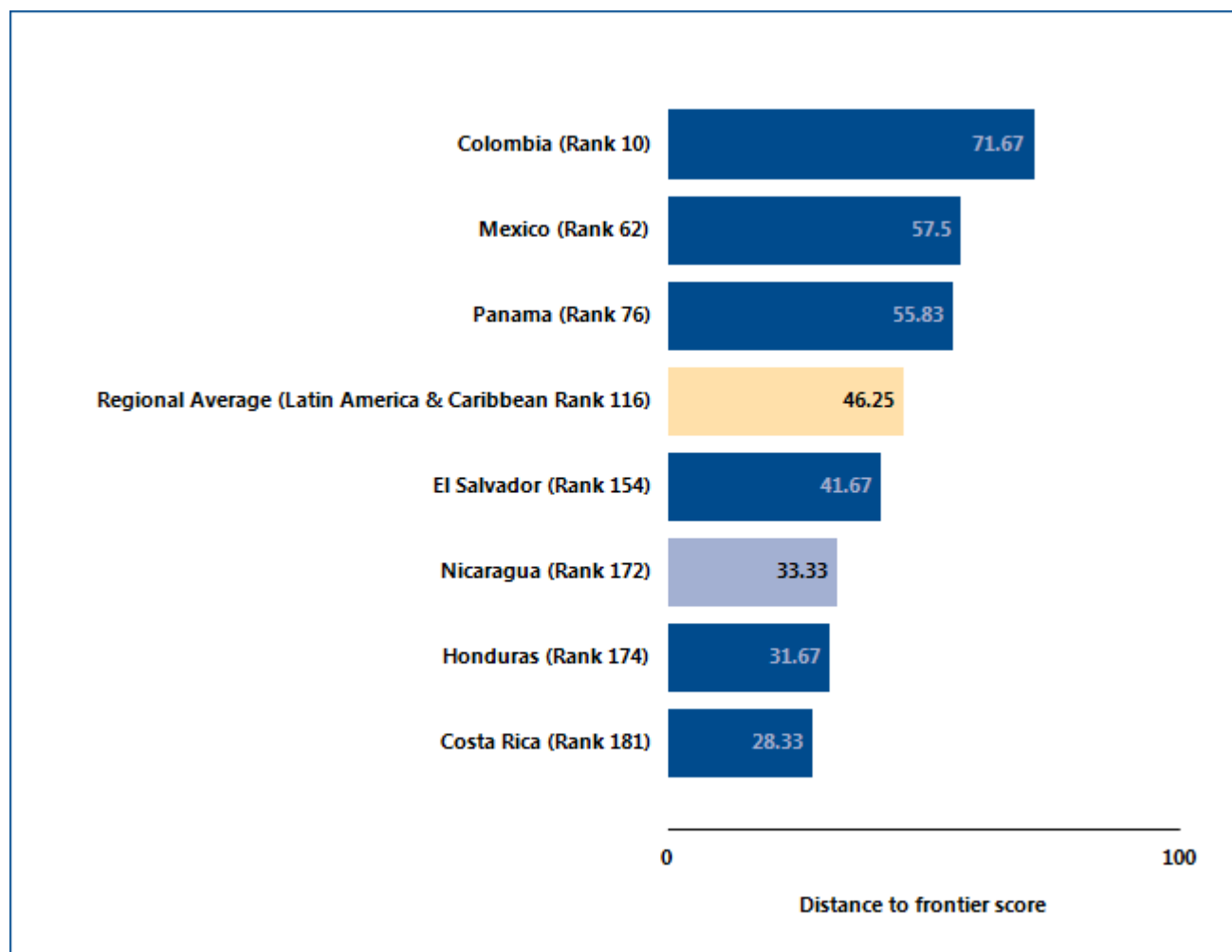
Where does the economy stand today?

How strong are minority investor protections against self-dealing in Nicaragua? The economy has a score of 33.3 on the strength of minority investor protection index, with a higher score indicating stronger protections.

Globally, Nicaragua stands at 172 in the ranking of 189 economies on the strength of minority investor

protection index (figure 7.1). While the indicator does not measure all aspects related to the protection of minority investors, a higher ranking does indicate that an economy's regulations offer stronger minority investor protections against self-dealing in the areas measured.

Figure 7.1 How Nicaragua and comparator economies perform on the strength of minority investor protection index



Source: Doing Business database.

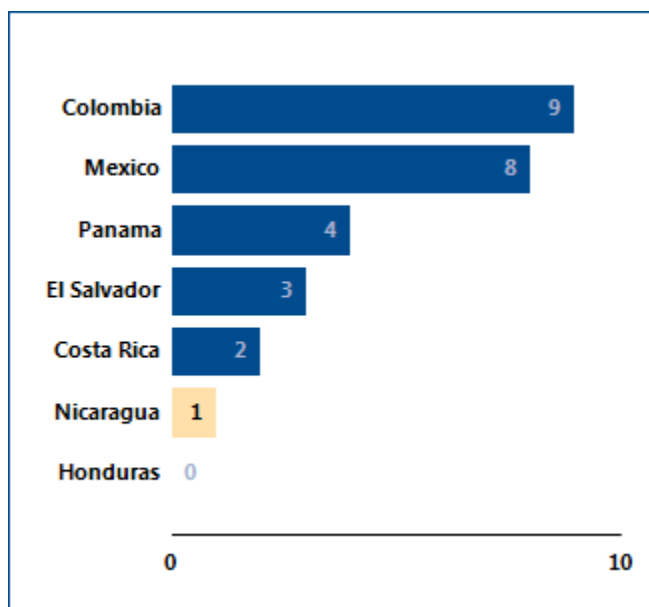
PROTECTING MINORITY INVESTORS

One way to put an economy's scores on the protecting minority investors indicators into context is to see where the economy stands in the distribution of scores across comparator economies. Figures 7.2 through 7.7 highlight the scores on the various minority investor protection

indices for Nicaragua in 2014. A summary of scoring for the protecting minority investors indicators at the end of this chapter provides details on how the indices were calculated.

Figure 7.2 How extensive are disclosure requirements?

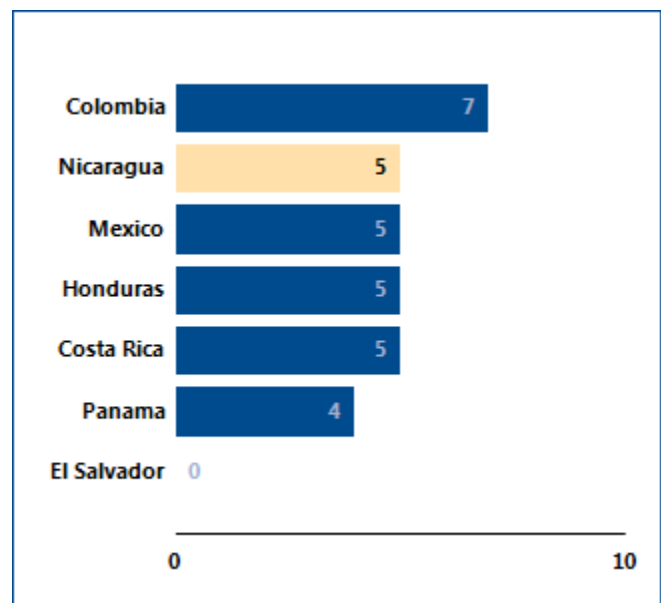
Extent of disclosure index (0-10)



Note: Higher scores indicate greater disclosure.
Source: Doing Business database.

Figure 7.3 How extensive is the liability regime for directors?

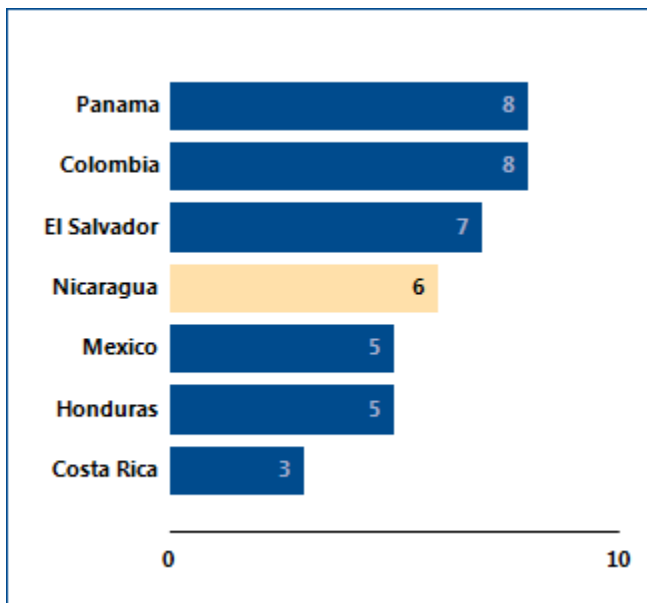
Extent of director liability index (0-10)



Note: Higher scores indicate greater liability of directors.
Source: Doing Business database.

PROTECTING MINORITY INVESTORS

Figure 7.4 How easy is accessing internal corporate documents?

Ease of shareholder suits index (0-10)

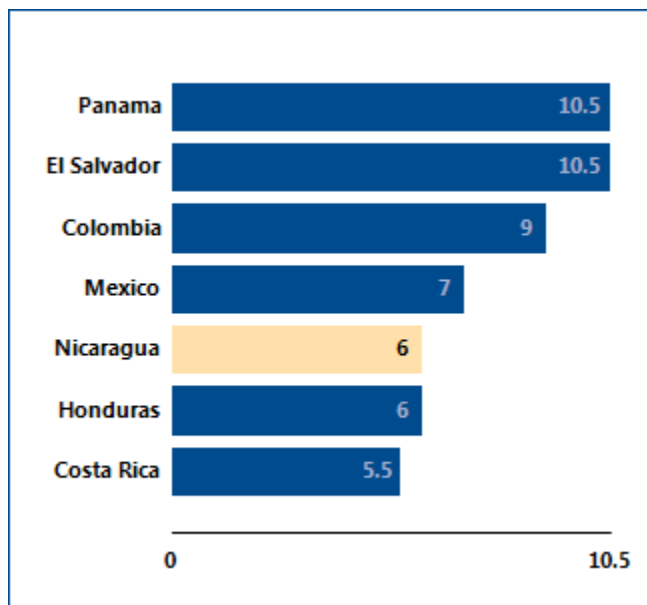
Note: Higher scores indicate greater minority shareholder access to evidence before and during trial.

Source: Doing Business database.

PROTECTING MINORITY INVESTORS

Figure 7.5 How extensive are shareholder rights?

Extent of shareholder rights index (0-10.5)

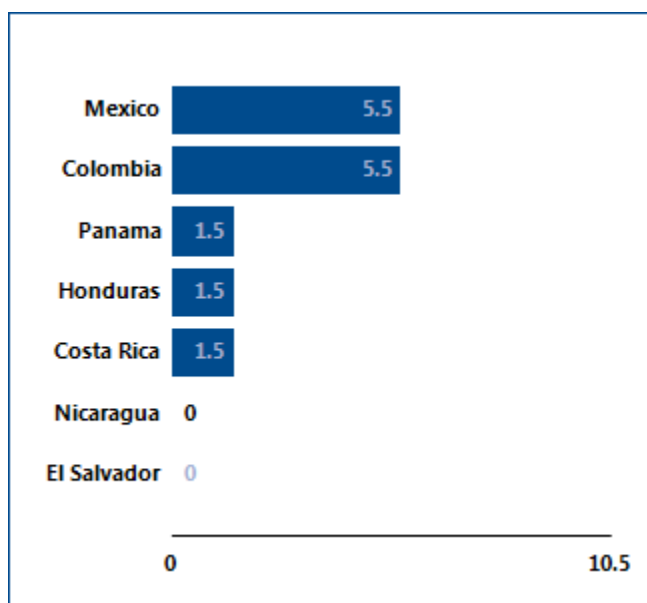


Note: The higher the score, the stronger the protections.

Source: Doing Business database.

Figure 7.6 How strong is the governance structure?

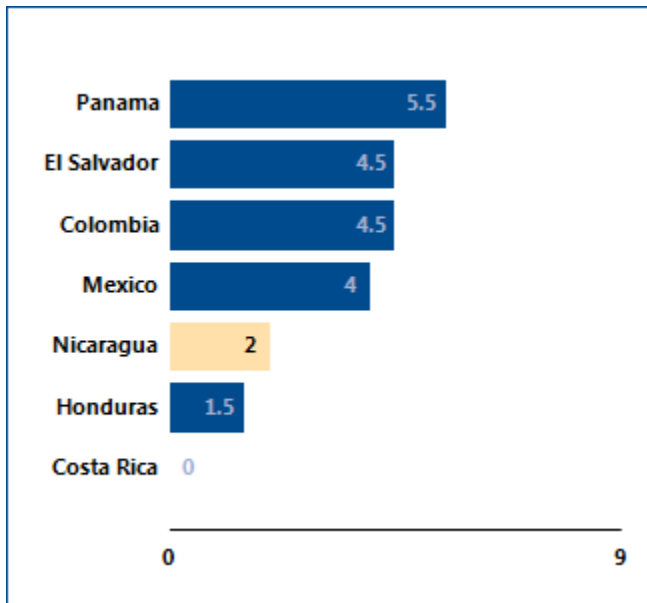
Strength of governance structure index (0-10.5)



Note: Higher scores indicate more stringent governance structure requirements.

Source: Doing Business database.

Figure 7.7 How extensive is corporate transparency?

Extent of corporate transparency index (0-9)

Note: Higher scores indicate greater transparency.
Source: Doing Business database.

PROTECTING MINORITY INVESTORS

What are the details?

The protecting minority investors indicators reported here for Nicaragua are based on detailed information collected through a survey of corporate and securities lawyers about securities regulations, company laws and court rules of evidence and procedure. To construct the six indicators on minority investor protection, scores are assigned to each based on a range of conditions relating

to disclosure, director liability, shareholder suits, shareholder rights, governance structure and corporate transparency in a standard case study (for more details, see the Data Notes section of the *Doing Business 2015* report). The summary below shows the details underlying the scores for Nicaragua.

Table 7.2 Summary of scoring for the protecting minority investors indicators in Nicaragua

	Answer	Score
Extent of disclosure index (0-10)		1.0
Which corporate body can provide legally sufficient approval for the Buyer-Seller transaction? (0-3)	Shareholders or board of directors including interested parties	1
Is disclosure by the interested director to the board of directors required? (0-2)	No disclosure obligation	0
Is disclosure of the transaction in published periodic filings (annual reports) required? (0-2)	No disclosure obligation	0
Is immediate disclosure of the transaction to the public and/or shareholders required? (0-2)	No disclosure obligation	0
Must an external body review the terms of the transaction before it takes place? (0-1)	No	0
Extent of director liability index (0-10)		5.0
Can shareholders sue directly or derivatively for the damage caused by the Buyer-Seller transaction to the company? (0-1)	Yes	1
Can shareholders hold the interested director liable for the damage caused by the transaction to the company? (0-2)	Liable if negligent	1
Can shareholders hold members of the approving body liable for the damage caused by the transaction to the company? (0-2)	Liable if negligent	1
Must the interested director pay damages for the harm caused to the company upon a successful claim by a shareholder plaintiff? (0-1)	Yes	1
Must the interested director repay profits made from the transaction upon a successful claim by a shareholder plaintiff? (0-1)	No	0
Can both fines and imprisonment be applied against the interested director? (0-1)	No	0
Can a court void the transaction upon a successful claim by a shareholder plaintiff? (0-2)	Voidable if negligently concluded	1
Ease of shareholder suits index (0-10)		6.0
Before filing suit, can shareholders owning 10% of the company's share capital inspect the transaction documents? (0-1)	Yes	1
Can the plaintiff obtain any documents from the defendant	Any relevant document	3

and witnesses during trial? (0-3)		
Can the plaintiff request categories of documents from the defendant without identifying specific ones? (0-1)	No	0
Can the plaintiff directly question the defendant and witnesses during trial? (0-2)	No	0
Is the level of proof required for civil suits lower than that of criminal cases? (0-1)	Yes	1
Can shareholder plaintiffs recover their legal expenses from the company? (0-2)	Yes if successful	1
Strength of minority investor protection index (0-10)		3.3
Extent of conflict of interest regulation index (0-10)		4.0
Extent of shareholder rights index (0-10.5)		6.0
Can shareholders amend company bylaws or statutes with a simple majority?	No	0
Can shareholders owning 10% of the company's share capital call for an extraordinary meeting of shareholders?	Yes	1.5
Can shareholders remove members of the board of directors before the end of their term.	Yes	1.5
Must a company obtain its shareholders' approval every time it issues new shares?	Yes	1.5
Are shareholders automatically granted subscription rights on new shares?	No	0
Must shareholders approve the election and dismissal of the external auditor?	No	0
Can shareholders freely trade shares prior to a major corporate action or meeting of shareholders?	Yes	1.5
Strength of governance structure index (0-10.5)		0.0
Is the CEO barred from also serving as chair of the board of directors?	Yes	1.5
Must the board of directors include independent board members?	No	0
Must a company have a separate audit committee?	No	0
Must changes to the voting rights of a series or class of shares be approved only by the holders of the affected shares?	No	0
Must a potential acquirer make a tender offer to all shareholders upon acquiring 50% of a company?	No	0
Is cross-shareholding between 2 independent companies limited to 10% of outstanding shares?	No	0
Is a subsidiary barred from acquiring shares issued by its parent company?	Yes	1.5
Extent of corporate transparency index (0-9)		2.0
Must ownership stakes representing 10% be disclosed?	No	0
Must information about board members' other directorships as well as basic information on their primary employment be disclosed?	No	0
Must the compensation of individual managers be disclosed?	No	0
Must financial statements contain explanatory notes on significant accounting policies, trends, risks, uncertainties and other factors influencing the reporting?	Yes for listed companies	1
Must annual financial statements be audited by an external	No	0

PAYING TAXES

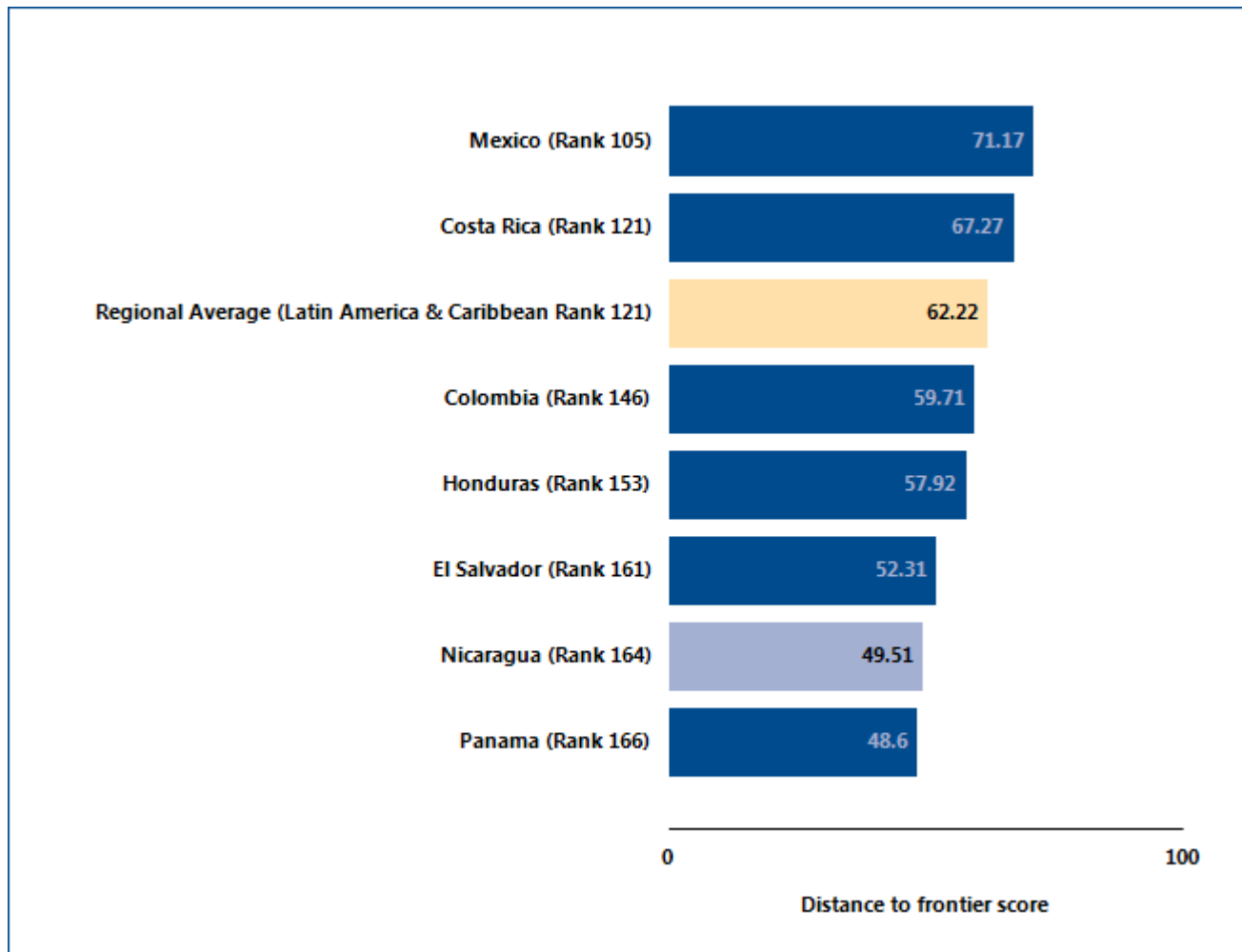
Where does the economy stand today?

What is the administrative burden of complying with taxes in Nicaragua—and how much do firms pay in taxes? On average, firms make 43.0 tax payments a year, spend 207.0 hours a year filing, preparing and paying taxes and pay total taxes amounting to 65.8% of profit (see the summary at the end of this chapter for details). Most indicator sets refer to a case scenario in the largest business city of an economy, except for 11 economies for which the data are a population-weighted average of the

2 largest business cities. See the chapter on distance to frontier and ease of doing business ranking at the end of this profile for more details.

Globally, Nicaragua stands at 164 in the ranking of 189 economies on the ease of paying taxes (figure 8.1). The rankings for comparator economies and the regional average ranking provide other useful information for assessing the tax compliance burden for businesses in Nicaragua.

Figure 8.1 How Nicaragua and comparator economies rank on the ease of paying taxes



Source: Doing Business database.

PAYING TAXES

Economies around the world have made paying taxes faster and easier for businesses—such as by consolidating filings, reducing the frequency of payments or offering electronic filing and payment. Many have lowered tax rates. Changes have brought

concrete results. Some economies simplifying tax payment and reducing rates have seen tax revenue rise. What tax reforms has *Doing Business* recorded in Nicaragua (table 8.1)?

Table 8.1 How has Nicaragua made paying taxes easier—or not?
By *Doing Business* report year from DB2010 to DB2015

DB year	Reform
DB2011	Nicaragua increased taxes on firms by raising social security contribution rates and introducing a 10% withholding tax on the gross interest accrued from deposits. It also improved electronic payment of taxes through bank transfer.
DB2012	Nicaragua made paying taxes easier for companies by promoting electronic filing and payment of the major taxes, an option now used by the majority of taxpayers.

Note: For information on reforms in earlier years (back to DB2006), see the *Doing Business* reports for these years, available at <http://www.doingbusiness.org>.

Source: *Doing Business* database.

PAYING TAXES

What are the details?

The indicators reported here for Nicaragua are based on the taxes and contributions that would be paid by a standardized case study company used by *Doing Business* in collecting the data (see the section in this chapter on what the indicators cover). Tax practitioners are asked to review a set of financial statements as well as a standardized list of assumptions and transactions that the company completed during its 2nd year of operation. Respondents are asked how much taxes and mandatory contributions the business must pay and how these taxes are filed and paid.

LOCATION OF STANDARDIZED COMPANY

City: Managua

The taxes and contributions paid are listed in the summary below, along with the associated number of payments, time and tax rate.

Table 8.2 Summary of tax rates and administration

Tax or mandatory contribution	Payments (number)	Notes on payments	Time (hours)	Statutory tax rate	Tax base	Total tax rate (% of profit)	Notes on total tax rate
Corporate income tax	1	online filing	67	30%	taxable income	22.5	
Employer paid - Social security contributions	12		76	16%	gross salaries	18	
Turnover tax	12		0	1%	sales (purchase cost)	17.7	
Minimum tax	1	Online	0	1%	assessed total asset value	4.7	included in other taxes
Dividend tax	1		0	10%	distributed profits	2.6	
Employer paid - Training tax	12		0	2%	gross salaries	2.3	
Capital Gains tax on property sale	1		0	30%	land value	1.5	
Real estate tax	1		0	1%	property value	1.2	
Employee paid - Social security contributions	0	paid jointly	0	6.25%	gross salaries	0	withheld

Tax or mandatory contribution	Payments (number)	Notes on payments	Time (hours)	Statutory tax rate	Tax base	Total tax rate (% of profit)	Notes on total tax rate
Value added tax (VAT)	1	online filing	64	15%	value added	0	not included
Fuel tax	1		0	0.6985%	fuel consumption	0	small amount
Totals	43.0		207.0			65.8	

Source: Doing Business database.

TRADING ACROSS BORDERS

In today's globalized world, making trade between economies easier is increasingly important for business. Excessive document requirements, burdensome customs procedures, inefficient port operations and inadequate infrastructure all lead to extra costs and delays for exporters and importers, stifling trade potential. Research shows that exporters in developing countries gain more from a 10% drop in their trading costs than from a similar reduction in the tariffs applied to their products in global markets.

What do the indicators cover?

Doing Business measures the time and cost (excluding tariffs and the time and cost for sea transport) associated with exporting and importing a standard shipment of goods by sea transport, and the number of documents necessary to complete the transaction. The indicators cover predefined stages such as documentation requirements and procedures at customs and other regulatory agencies as well as at the port. They also cover trade logistics, including the time and cost of inland transport to the largest business city. The ranking of economies on the ease of trading across borders is determined by sorting their distance to frontier scores for trading across borders. These scores are the simple average of the distance to frontier scores for each of the component indicators. To make the data comparable across economies, *Doing Business* uses several assumptions about the business and the traded goods.

The business:

- Is located in the economy's largest business city. For the 11 economies with a population of more than 100 million, data for a second city have been added.
- Is a private, limited liability company, domestically owned and does not operate with special export or import privileges.
- Conducts export and import activities, but does not have any special accreditation such as an authorized economic operator status.

WHAT THE TRADING ACROSS BORDERS INDICATORS MEASURE

Documents required to export and import (number)

- Bank documents
- Customs clearance documents
- Port and terminal handling documents
- Transport documents

Time required to export and import (days)

- Obtaining, filling out and submitting all the documents
- Inland transport and handling
- Customs clearance and inspections
- Port and terminal handling
- Does not include sea transport time

Cost required to export and import (US\$ per container)

- All documentation
- Inland transport and handling
- Customs clearance and inspections
- Port and terminal handling
- Official costs only, no bribes

The traded product:

- Is not hazardous nor includes military items.
- Does not require refrigeration or any other special environment.
- Do not require any special phytosanitary or environmental safety standards other than accepted international standards.
- Is one of the economy's leading export or import products.
- Is transported in a dry-cargo, 20-foot full container load.

TRADING ACROSS BORDERS

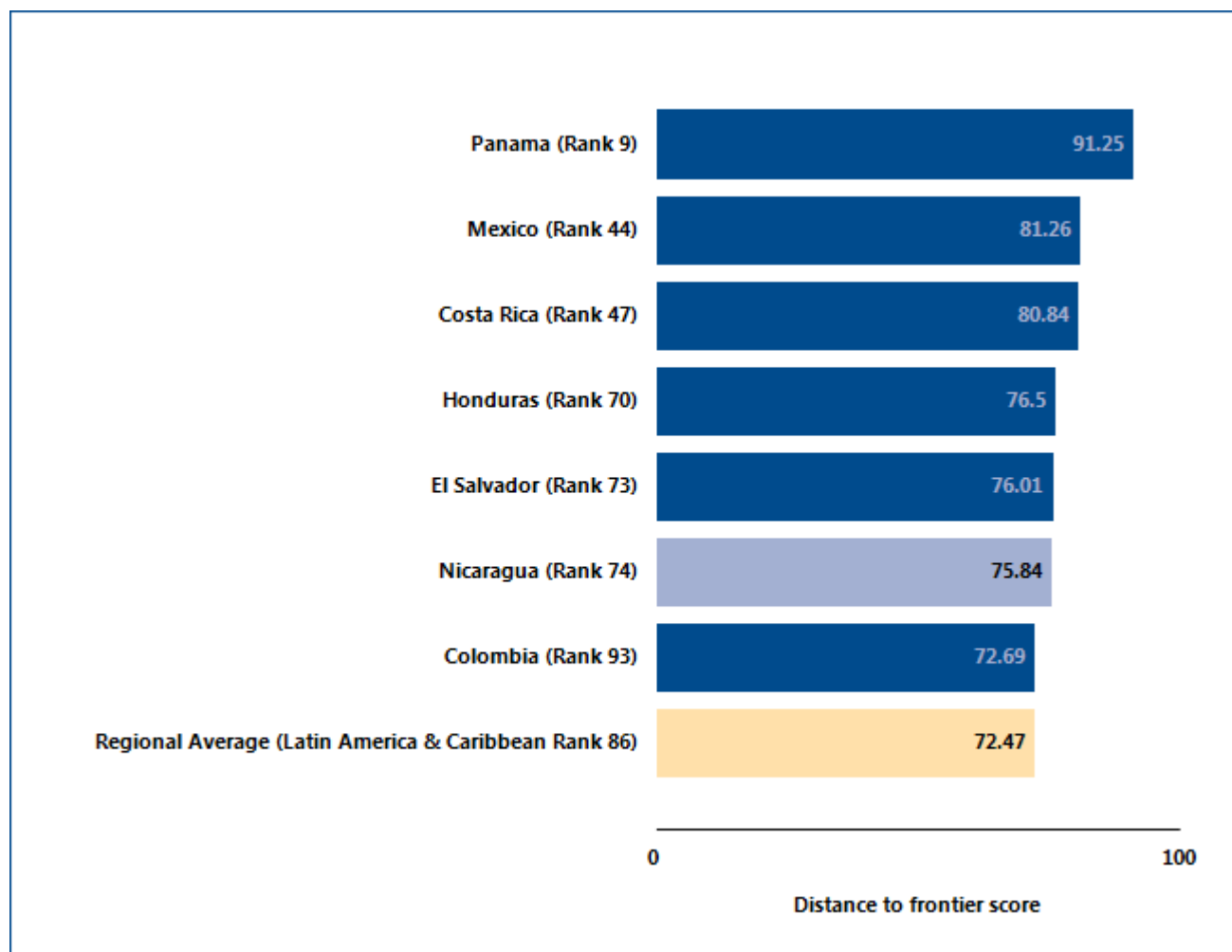
Where does the economy stand today?

What does it take to export or import in Nicaragua? According to data collected by *Doing Business*, exporting a standard container of goods requires 5 documents, takes 21.0 days and costs \$1140.0. Importing the same container of goods requires 5 documents, takes 20.0 days and costs \$1245.0 (see the summary of four predefined stages and documents at the end of this chapter for details). Most indicator sets refer to a case scenario in the largest business city of an economy, except for 11 economies for which the data are a

population-weighted average of the 2 largest business cities. See the chapter on distance to frontier and ease of doing business ranking at the end of this profile for more details.

Globally, Nicaragua stands at 74 in the ranking of 189 economies on the ease of trading across borders (figure 9.1). The rankings for comparator economies and the regional average ranking provide other useful information for assessing how easy it is for a business in Nicaragua to export and import goods.

Figure 9.1 How Nicaragua and comparator economies rank on the ease of trading across borders



Source: *Doing Business* database.

TRADING ACROSS BORDERS

In economies around the world, trading across borders as measured by *Doing Business* has become faster and easier over the years. Governments have introduced tools to facilitate trade—including single windows, risk-based inspections and electronic data interchange

systems. These changes help improve the trading environment and boost firms' international competitiveness. What trade reforms has *Doing Business* recorded in Nicaragua (table 9.1)?

Table 9.1 How has Nicaragua made trading across borders easier—or not?
By *Doing Business* report year from DB2010 to DB2015

DB year	Reform
DB2011	Nicaragua expedited trade by migrating to a new electronic data interchange system for customs, setting up a physical one-stop shop for exports and investing in new equipment at the port of Corinto.

Note: For information on reforms in earlier years (back to DB2006), see the *Doing Business* reports for these years, available at <http://www.doingbusiness.org>.

Source: *Doing Business* database.

TRADING ACROSS BORDERS

What are the details?

The indicators reported here for Nicaragua are based on a set of specific predefined stages for trading a standard shipment of goods by ocean transport (see the section in this chapter on what the indicators cover). Information on the required documents and the time and cost to complete export and import is collected from local freight forwarders, shipping lines, customs brokers, port officials and banks.

LOCATION OF STANDARDIZED COMPANY

Port Name: Puerto Corinto (Pacífico)

City: Managua

The predefined stages, and the associated time and cost, for exporting and importing a standard shipment of goods are listed in the summary below, along with the required documents.

Table 9.2 Summary of predefined stages and documents for trading across borders in Nicaragua

Stages to export	Time (days)	Cost (US\$)
Customs clearance and inspections	3	110
Documents preparation	10	310
Inland transportation and handling	5	600
Ports and terminal handling	3	120
Totals	21	1,140

Stages to import	Time (days)	Cost (US\$)
Customs clearance and inspections	4	200
Documents preparation	11	325
Inland transportation and handling	2	600
Ports and terminal handling	3	120
Totals	20	1,245

Documents to export

Bill of lading
Certificate of origin
Commercial invoice
Customs export declaration (FUE)
Quality Certificate

Documents to import

Bill of lading
Commercial invoice
Customs import declaration
Fiscal Solvency
Packing list

Source: *Doing Business* database.

ENFORCING CONTRACTS

Effective commercial dispute resolution has many benefits. Courts are essential for entrepreneurs because they interpret the rules of the market and protect economic rights. Efficient and transparent courts encourage new business relationships because businesses know they can rely on the courts if a new customer fails to pay. Speedy trials are essential for small enterprises, which may lack the resources to stay in business while awaiting the outcome of a long court dispute.

What do the indicators cover?

Doing Business measures the efficiency of the judicial system in resolving a commercial dispute before local courts. Following the step-by-step evolution of a standardized case study, it collects data relating to the time, cost and procedural complexity of resolving a commercial lawsuit. The ranking on the ease of enforcing contracts is the simple average of the percentile rankings on its component indicators: procedures, time and cost.

The dispute in the case study involves the breach of a sales contract between 2 domestic businesses. The case study assumes that the court hears an expert on the quality of the goods in dispute. This distinguishes the case from simple debt enforcement. To make the data comparable across economies, *Doing Business* uses several assumptions about the case:

- The seller and buyer are located in the economy's largest business city. For the 11 economies with a population of more than 100 million, data for a second city have been added.
- The buyer orders custom-made goods, then fails to pay.
- The seller sues the buyer before a competent court.
- The value of the claim is 200% of the income per capita or the equivalent in local currency of USD 5,000, whichever is greater.

WHAT THE ENFORCING CONTRACTS

INDICATORS MEASURE

Procedures to enforce a contract through the courts (number)

- Steps to file and serve the case
- Steps for trial and judgment
- Steps to enforce the judgment

Time required to complete procedures (calendar days)

- Time to file and serve the case
- Time for trial and obtaining judgment
- Time to enforce the judgment

Cost required to complete procedures (% of claim)

- Average attorney fees
- Court costs
- Enforcement costs

- The seller requests a pretrial attachment to secure the claim.
- The dispute on the quality of the goods requires an expert opinion.
- The judge decides in favor of the seller; there is no appeal.
- The seller enforces the judgment through a public sale of the buyer's movable assets.

ENFORCING CONTRACTS

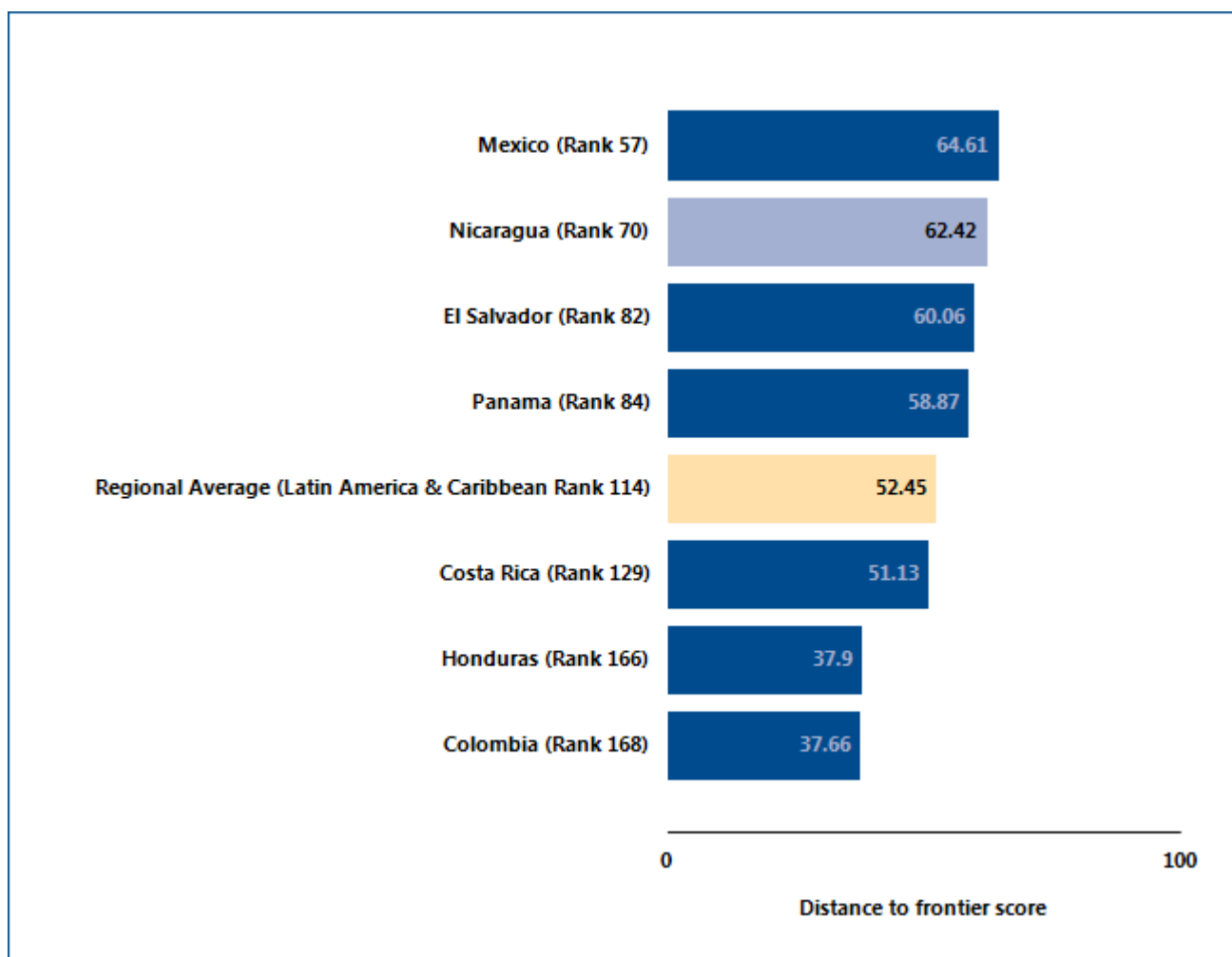
Where does the economy stand today?

How efficient is the process of resolving a commercial dispute through the courts in Nicaragua? According to data collected by *Doing Business*, contract enforcement takes 519.0 days, costs 26.8% of the value of the claim and requires 37.0 procedures (see the summary at the end of this chapter for details). Most indicator sets refer to a case scenario in the largest business city of an economy, except for 11 economies for which the data are a population-weighted average of the 2 largest

business cities. See the chapter on distance to frontier and ease of doing business ranking at the end of this profile for more details.

Globally, Nicaragua stands at 70 in the ranking of 189 economies on the ease of enforcing contracts (figure 10.1). The rankings for comparator economies and the regional average ranking provide other useful benchmarks for assessing the efficiency of contract enforcement in Nicaragua.

Figure 10.1 How Nicaragua and comparator economies rank on the ease of enforcing contracts



Source: *Doing Business* database.

ENFORCING CONTRACTS

Economies in all regions have improved contract enforcement in recent years. A judiciary can be improved in different ways. Higher-income economies tend to look for ways to enhance efficiency by introducing new technology. Lower-income economies often work on

reducing backlogs by introducing periodic reviews to clear inactive cases from the docket and by making procedures faster. What reforms making it easier (or more difficult) to enforce contracts has *Doing Business* recorded in Nicaragua (table 10.1)?

Table 10.1 How has Nicaragua made enforcing contracts easier—or not?

By *Doing Business* report year from DB2010 to DB2015

DB year	Reform
DB2012	Nicaragua raised the monetary threshold for commercial claims that can be brought to the Managua local civil court, leaving lower-value claims in the local courts, where proceedings are simpler and faster.

Note: For information on reforms in earlier years (back to DB2005), see the *Doing Business* reports for these years, available at <http://www.doingbusiness.org>.

Source: *Doing Business* database.

ENFORCING CONTRACTS

What are the details?

The indicators reported here for Nicaragua are based on a set of specific procedural steps required to resolve a standardized commercial dispute through the courts (see the section in this chapter on what the indicators cover). These procedures, and the time and cost of completing them, are identified through study of the codes of civil procedure and other court regulations, as well as through questionnaires completed by local litigation lawyers (and, in a quarter of the economies covered by *Doing Business*, by judges as well).

COURT NAME	
Claim value:	NIO 121,584
Court name:	Managua District Civil Court
City:	Managua

Table 10.2 Summary of time, cost and procedures for enforcing a contract in Nicaragua

Indicator	Nicaragua	Latin America & Caribbean average
Time (days)	519	737
Filing and service	89	
Trial and judgment	230	
Enforcement of judgment	200	
Cost (% of claim)	26.8	30.6
Attorney cost (% of claim)	16.3	
Court cost (% of claim)	5.5	
Enforcement Cost (% of claim)	5.0	
Procedures (number)	37	40
Number of procedures (without bonus points)	37	
Total number of procedures (including bonus points)	37	

No.	Procedures
	Filing and service:
1	A third person formally notifies Defendant: A third person formally notifies Defendant. A person other than the Plaintiff or his lawyer, such as a notary public, formally notifies Defendant of Plaintiff's request for payment.
2	Plaintiff hires a lawyer: Plaintiff hires a lawyer.
*	Plaintiff files a summons and complaint: Plaintiff files a summons and complaint with the court (orally or in writing).
*	Plaintiff pays court fees: Plaintiff pays court fees (e.g. court duties, stamp duties, or any other type of court fees). Answer 'yes' even if Plaintiff recovers these costs.
3	Registration of court case: Registration of court case by the court administration (this can include assigning a reference number to the case).
*	Assignment of court case to a judge: Assignment of court case to a judge (through a random procedure, automated system, ruling of an administrative judge, court officer, etc).
*	Judge admits summons and complaint: Judge admits summons and complaint (after verifying the formal requirements).
4	Delivery of summons and complaint to person authorized to perform service of process on Defendant: The judge or a court officer delivers the summons to a summoning office, officer, or authorized person (including Plaintiff), for service of process on Defendant.
5	Attempt at physical delivery: An attempt to physically deliver summons and complaint to Defendant is made.
6	Second attempt at physical delivery: If a first attempt is not ordinarily successful, a second attempt to physically deliver the summons and complaint to Defendant is required by law or standard practice. (Check 'yes' only if a first attempt at physical delivery is not ordinarily successful)
7	Application for substituted service: Because physical delivery is NOT successful, Plaintiff has recourse to substituted service. Substituted service can include, but is not limited to, service by publication in newspapers or affixing of a notice in court or on public bulletin boards. Only ch
8	Court order regarding substituted service: Judge in a court order sets out acceptable means for substituted service in a particular case.
9	Substituted service: Substituted service is completed by publication in newspapers, by affixing a notice in court or on public bulletin boards, etc.
*	Application for pre-judgment attachment: Plaintiff submits an application in writing for the attachment of Defendant's property prior to judgment.
*	Decision on pre-judgment attachment: Judge decides whether to grant Plaintiff's request for pre-judgment attachment of Defendant's property and notifies Plaintiff and Defendant of the decision.

No.	Procedures
10	Pre-judgment attachment order: Defendant's property is attached prior to judgment. Attachment order either involves physical attachment, or is achieved by freezing, registering, marking, or otherwise separating and restricting Defendant's movement of specific moveable assets.
	Trial and judgment:
*	Defendant files preliminary objections.: Defendant presents preliminary objections to the court. (Preliminary exemptions differ from answers on the merits. Examples of preliminary motions are motions to dismiss on the basis of the statute of limitations or jurisdictional objections, etc.) Checke
*	Plaintiff's answer to preliminary motions: Plaintiff responds to preliminary motions raised by Defendant. Checked as 'yes' if preliminary motions are commonly raised (step 30) and if Plaintiff responds to them immediately.
11	Judge's resolution on preliminary objections: Judge decides on preliminary objections separately from the merits of the case. Checked as 'yes' if preliminary objections are commonly made (step 30) and if judge resolves the question before rendering his decision.
12	Defendant files an answer to Plaintiff's claim: Defendant files a written pleading which includes his answer or defense on the merits of the case (see assumption 4).
*	Court appointment of independent expert: Judge appoints, either at the parties' request or at his own initiative, an independent expert to decide whether the quality of the goods Plaintiff delivered to Defendant is adequate. (see assumption 5-b).
13	Notification of court-appointment of independent expert: The court notifies both parties that the court is appointing an independent expert (see assumption 5-b).
*	Delivery of expert report by court-appointed expert: The independent expert, appointed by the court, delivers his or her expert report to the court (see assumption 5-b).
*	Setting of date for mediation hearing: The judge sets a date for a mediation hearing, sometimes also called a 'pre-trial conference,' and notifies the parties of the hearing date.
14	Mediation hearing: The judge, during this informal meeting with the parties, encourages them to settle the case (acting as mediator). The case cannot be settled, the judge may draft a pre-trial conference report, after which the case may be allocated to another judge for tr
*	List of (expert) witnesses: The parties file a list of (expert) witnesses with the court (see assumption 5-a).
15	Summoning of (expert) witnesses: The court summons (expert) witnesses to appear in court for the oral hearing or trial (see assumption 5-a).
16	Oral hearing (prevalent in civil law): The parties argue the merits of the case at an oral hearing before the judge. Witnesses and a court-appointed independent expert may be heard and questioned at the oral hearing.
17	Judgment date: The judge sets a date for delivery of the judgment.
18	Writing of judgment: The judge produces a written copy of the judgment.
19	Registration of judgment: The court office registers the judgment after receiving a written copy of the judgment.

No.	Procedures
20	Court notification of availability of the written judgment: The court notifies the parties that the written judgment is available at the courthouse.
21	Defendant is formally notified of the judgment: Plaintiff or court formally notifies the Defendant of the judgment. The appeal period starts to run from the day the Defendant is formally notified of the judgment.
22	Appeal period: By law Defendant has the opportunity to appeal the judgment during a specified period. Defendant decides not to appeal. Seller decides to start enforcing the judgment when the appeal period ends (see assumption 8).
23	Order for reimbursement by Defendant of Plaintiff's court fees: The judgment orders Defendant to reimburse Plaintiff for the court fees Plaintiff has advanced, because Defendant has lost the case.
	Enforcement of judgment:
*	Plaintiff hires a lawyer: Plaintiff hires a lawyer to enforce the judgment or continues to be represented by a lawyer during the enforcement of judgment phase.
24	Plaintiff advances enforcement fees: Plaintiff pays the fees related to the enforcement of the judgment.
*	Plaintiff's request for physical enforcement: As Plaintiff commonly fears that Defendant might physically resist the taking into custody of its previously attached movable assets, Plaintiff requests the judge or the police authorities to obtain police assistance during the physical enforcement of the
25	Judge's order for physical enforcement: Judge orders the police to assist with the physical enforcement of the attachment of Defendant's movable assets. Check as "yes" only if the pretrial order of attachment for Defendant's moveable assets does not ordinarily involve physical seizure of the as
26	Identification of Defendant's assets by court official or Defendant for purposes of enforcement: The judge, a court enforcement officer, a private bailiff or the Defendant himself identifies Defendant's movable assets for the purposes of enforcing the judgment through a sale of Defendant's assets.
27	Plaintiff identifies Defendant's assets for attachment: Plaintiff identifies Defendant's assets for attachment.
28	Attachment: Defendant's movable goods are attached (physically or by registering, marking or separating assets).
29	Report on execution of attachment: A court enforcement officer or private bailiff delivers a report on the attachment of Defendant's movable goods to the judge.
30	Valuation or appraisal of attached movable goods: The court or court-appointed valuation expert evaluates the attached goods.
31	Enforcement disputes before court: The enforcement of the judgment is delayed because Defendant opposes aspects of the enforcement process before the judge.
32	Call for public auction: Judge calls a public auction by, for example, advertising or publication in the newspapers.
33	Sale through public auction: The Defendant's movable property is sold at public auction.
34	Judge's decision on bids: Judge determines the adequacy of the bids presented at public auction.

No.	Procedures
35	Distribution of proceeds: The proceeds of the public auction are distributed to Plaintiff (and, where applicable, to other creditors, according to the rules of priority).
36	Reimbursement of Plaintiff's enforcement fees: Defendant reimburses Plaintiff's enforcement fees which Plaintiff had advanced previously.
37	Payment: Court orders that the proceeds of the public auction or the direct sale be delivered to Plaintiff.

* Not counted in the total number of procedures.

Source: *Doing Business* database.

RESOLVING INSOLVENCY

A robust bankruptcy system functions as a filter, ensuring the survival of economically efficient companies and reallocating the resources of inefficient ones. Fast and cheap insolvency proceedings result in the speedy return of businesses to normal operation and increase returns to creditors. By improving the expectations of creditors and debtors about the outcome of insolvency proceedings, well-functioning insolvency systems can facilitate access to finance, save more viable businesses and thereby improve growth and sustainability in the economy overall.

What do the indicators cover?

Doing Business studies the time, cost and outcome of insolvency proceedings involving domestic legal entities. These variables are used to calculate the recovery rate, which is recorded as cents on the dollar recouped by secured creditors through reorganization, liquidation or debt enforcement (foreclosure) proceedings. To determine the present value of the amount recovered by creditors, *Doing Business* uses the lending rates from the International Monetary Fund, supplemented with data from central banks and the Economist Intelligence Unit.

In addition, *Doing Business* evaluates the adequacy and integrity of the existing legal framework applicable to liquidation and reorganization proceedings through the strength of insolvency framework index. The index tests whether economies adopted internationally accepted good practices in four areas: commencement of proceedings, management of debtor's assets, reorganization proceedings and creditor participation.

The ranking of the Resolving Insolvency indicator is based on the recovery rate and the total score of the strength of insolvency framework index. The Resolving Insolvency indicator does not measure insolvency proceedings of individuals and financial institutions. The data are derived from survey responses by local insolvency practitioners and verified through a study of laws and regulations as well as public information on bankruptcy systems.

WHAT THE RESOLVING INSOLVENCY INDICATORS MEASURE

Time required to recover debt (years)

Measured in calendar years

Appeals and requests for extension are included

Cost required to recover debt (% of debtor's estate)

Measured as percentage of estate value

Court fees

Fees of insolvency administrators

Lawyers' fees

Assessors' and auctioneers' fees

Other related fees

Outcome

Whether business continues operating as a going concern or business assets are sold piecemeal

Recovery rate for creditors

Measures the cents on the dollar recovered by secured creditors

Outcome for the business (survival or not) determines the maximum value that can be recovered

Official costs of the insolvency proceedings are deducted

Depreciation of furniture is taken into account

Present value of debt recovered

Strength of insolvency framework index (0-16)

Sum of the scores of four component indices:

Commencement of proceedings index (0-3)

Management of debtor's assets index (0-6)

Reorganization proceedings index (0-3)

Creditor participation index (0-4)

RESOLVING INSOLVENCY

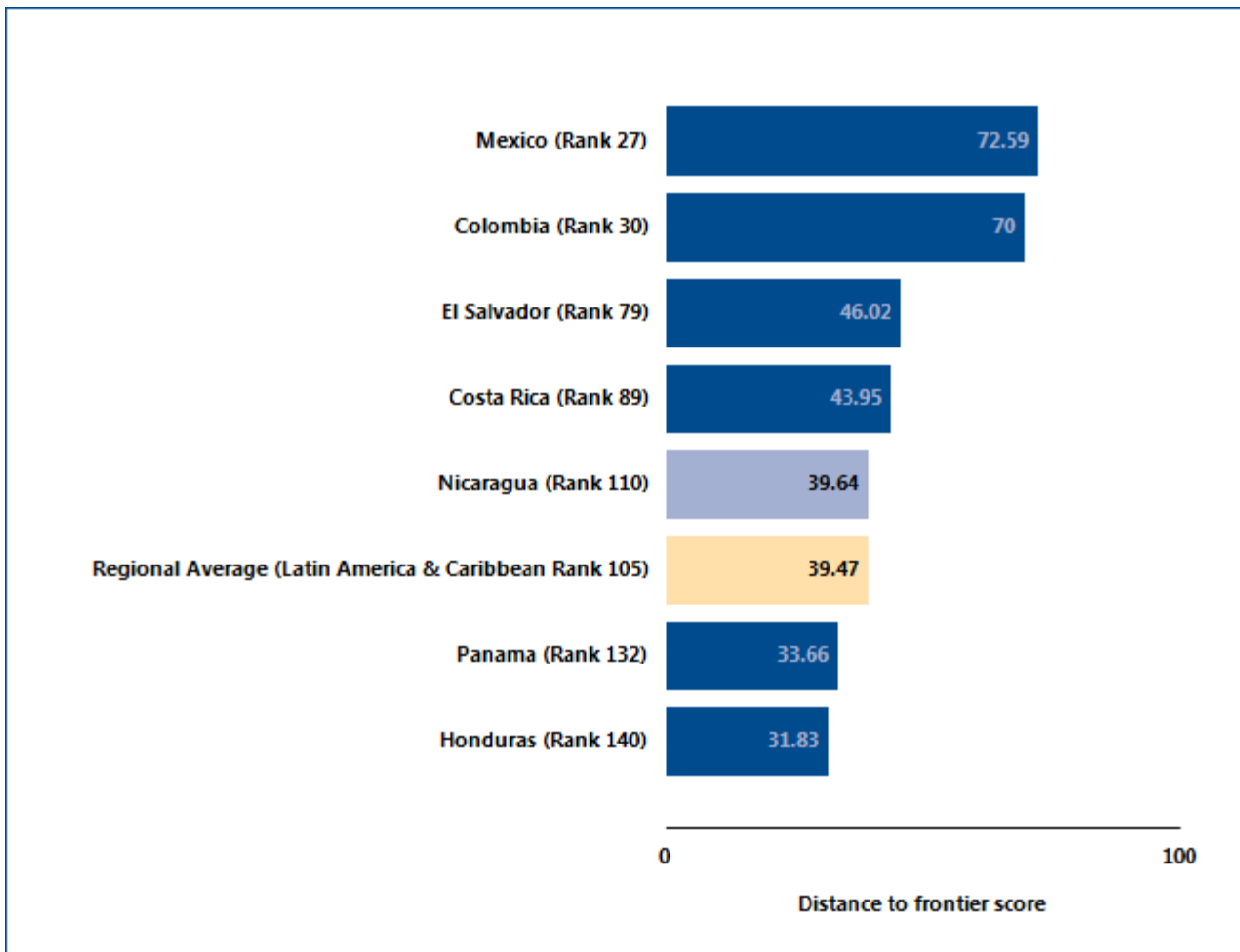
Where does the economy stand today?

Combination of quality regulations and efficient practice characterize the top-performing economies. How efficient are insolvency proceedings in Nicaragua? According to data collected by *Doing Business*, resolving insolvency takes 2.2 years on average and costs 14.5% of the debtor's estate, with the most likely outcome being that the company will be sold as piecemeal sale. The average recovery rate is 33.0 cents on the dollar. Most indicator sets refer to a case scenario in the largest business city of an economy, except for 11 economies for which the data are a population-weighted average of the 2 largest business cities. See the chapter on distance to frontier and ease of doing business ranking at the end of this profile for more details.

According to data collected by *Doing Business*, Nicaragua scores 2.0 out of 3 points on the commencement of proceedings index, 2.0 out of 6 points on the management of debtor's assets index, 0.0 out of 3 points on the reorganization proceedings index, and 3.0 out of 4 points on the creditor participation index. Nicaragua's total score on the strength of insolvency framework index is 7.0 out of 16.

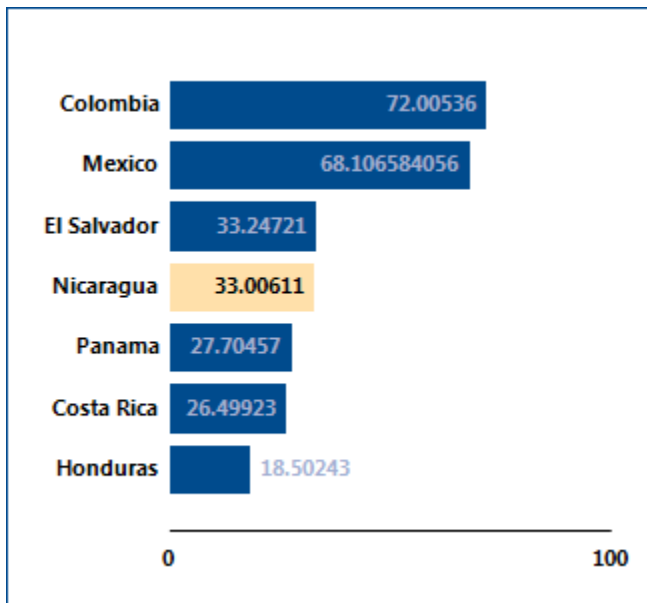
Globally, Nicaragua stands at 110 in the ranking of 189 economies on the ease of resolving insolvency (figure 11.1). The rankings for comparator economies and the regional average ranking provide other useful benchmarks for assessing the efficiency of insolvency proceedings in Nicaragua.

Figure 11.1 How Nicaragua and comparator economies rank on the ease of resolving insolvency



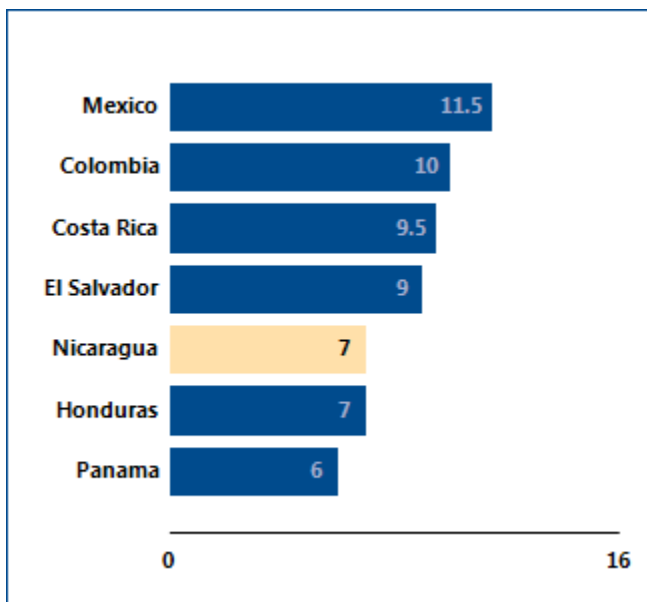
Source: Doing Business database.

Figure 11.2 Recovery Rate (0-100) - Nicaragua



Source: Doing Business database.

Figure 11.3 Strength of insolvency framework index (0-16) - Nicaragua



Source: Doing Business database.

LABOR MARKET REGULATION

Doing Business measures flexibility in the regulation of employment, specifically as it affects the hiring and redundancy of workers and the rigidity of working hours. This year, for the first time, the indicators measuring flexibility in labor market regulations focus on those affecting the food retail industry, using a standardized case study of a cashier in a supermarket. Also new is that *Doing Business* collects data on regulations applying to employees hired through temporary-work agencies as well as on those applying to permanent employees or employees hired on fixed-term contracts. The indicators also cover additional areas of labor market regulation, including social protection schemes and benefits as well as labor disputes.

Over the period from 2007 to 2011 improvements were made to align the methodology for the labor market regulation indicators (formerly the employing workers indicators) with the letter and spirit of the International Labour Organization (ILO) conventions. Only 6 of the 188 ILO conventions cover areas measured by *Doing Business*: employee termination, weekend work, holiday with pay, night work, protection against unemployment and medical care and sickness benefits. The *Doing Business* methodology is fully consistent with these 6 conventions. The ILO conventions covering areas related to the labor market regulation indicators do not include the ILO core labor standards—8 conventions covering the right to collective bargaining, the elimination of forced labor, the abolition of child labor and equitable treatment in employment practices.

Between 2009 and 2011 the World Bank Group worked with a consultative group—including labor lawyers, employer and employee representatives, and experts from the ILO, the Organisation for Economic Co-operation and Development (OECD), civil society and the private sector—to review the methodology for the labor market regulation indicators and explore future areas of research.

A full report with the conclusions of the consultative group is available at:
<http://www.doingbusiness.org/methodology/employing-workers>.

Doing Business 2015 presents the data for the labor market regulation indicators in an annex. The report does not present rankings of economies on these indicators nor include the topic in the aggregate distance to frontier score or ranking on the ease of doing business. Detailed data collected on labor market regulations are available on the *Doing Business* website (<http://www.doingbusiness.org>). The data on labor market regulations are based on a detailed survey of employment regulations that is completed by local lawyers and public officials. Employment laws and regulations as well as secondary sources are reviewed to ensure accuracy. To make the data comparable across economies, several assumptions about the worker and the business are used.

The worker:

- Is a cashier in a supermarket or a grocery store
- Is a full-time employee
- Is not a member of the labor union, unless membership is mandatory

The business:

- Is a limited liability company (or the equivalent in the economy) with 60 employees.
- Operates a supermarket or grocery store in the economy's largest business city. For 11 economies the data are also collected for the second largest business city.
- Is subject to collective bargaining agreements if such agreements cover more than 50% of the food retail sector and they apply even to firms that are not party to them.
- Abides by every law and regulation but does not grant workers more benefits than those mandated by law, regulation or (if applicable) collective bargaining agreements.

LABOR MARKET REGULATION

What are the details?

The data reported here for Nicaragua are based on a detailed survey of labor market regulation that is completed by local lawyers and public officials.

Employment laws and regulations as well as secondary sources are reviewed to ensure accuracy.

Difficulty of hiring index

Difficulty of hiring covers 4 areas: (i) whether fixed-term contracts are prohibited for permanent tasks; (ii) the maximum cumulative duration of fixed-term contracts; (iii) the minimum wage for a cashier, age 19, with 1 year of work experience; and (iv) the ratio of the minimum

wage to the average value added per worker. The average value added per worker is the ratio of an economy's GNI per capita to the working-age population as a percentage of the total population.

Difficulty of hiring index	Data
Fixed-term contracts prohibited for permanent tasks?	No
Maximum length of a single fixed-term contract (months)	No limit
Maximum length of fixed-term contracts, including renewals (months)	No limit
Minimum wage applicable to the worker assumed in the case study (US\$/month)	200.12
Ratio of minimum wage to value added per worker	0.84

Source: *Doing Business* database.

LABOR MARKET REGULATION

Rigidity of hours index

Rigidity of hours covers 7 areas: (i) whether the workweek can extend to 50 hours or more (including overtime) for 2 months in a year to respond to a seasonal increase in workload; (ii) the maximum number of days allowed in the workweek; (iii) the premium for night work (as a percentage of hourly pay); (iv) the premium for work on a weekly rest day (as a percentage of hourly pay); (v) whether there are restrictions on night work; (vi) whether there are restrictions on weekly holiday work; and (vii) the average paid annual leave for workers with 1 year of tenure, 5 years of tenure and 10 years of tenure.

Rigidity of hours index	Data
50-hour workweek allowed for 2 months a year in case of a seasonal increase in workload?	Yes
Maximum working days per week	6.0
Premium for night work (% of hourly pay)	0%
Premium for work on weekly rest day (% of hourly pay)	100%
Major restrictions on night work?	Yes
Major restrictions on weekly holiday?	Yes
Paid annual leave for a worker with 1 year of tenure (in working days)	30.0
Paid annual leave for a worker with 5 years of tenure (in working days)	30.0
Paid annual leave for a worker with 10 years of tenure (in working days)	30.0
Paid annual leave (average for workers with 1, 5 and 10 years of tenure, in working days)	30.0

Source: *Doing Business* database.

LABOR MARKET REGULATION

Difficulty of redundancy index

Difficulty of redundancy index looks at 9 questions: (i) what the length is in months of the maximum probationary period; (ii) whether redundancy is disallowed as a basis for terminating workers; (iii) whether the employer needs to notify a third party (such as a government agency) to terminate 1 redundant worker; (iv) whether the employer needs to notify a third party to terminate a group of 9 redundant workers; (v)

whether the employer needs approval from a third party to terminate 1 redundant worker; (vi) whether the employer needs approval from a third party to terminate a group of 9 redundant workers; (vii) whether the law requires the employer to reassign or retrain a worker before making the worker redundant; (viii) whether priority rules apply for redundancies; and (ix) whether priority rules apply for reemployment.

Difficulty of redundancy index	Data
Maximum length of probationary period (months)	1.0
Dismissal due to redundancy allowed by law?	Yes
Third-party notification if 1 worker is dismissed?	No
Third-party approval if 1 worker is dismissed?	No
Third-party notification if 9 workers are dismissed?	No
Third-party approval if 9 workers are dismissed?	No
Retraining or reassignment obligation before redundancy?	No
Priority rules for redundancies?	No
Priority rules for reemployment?	No

Source: *Doing Business* database.

LABOR MARKET REGULATION

Redundancy cost

Redundancy cost measures the cost of advance notice requirements, severance payments and penalties due when terminating a redundant worker, expressed in weeks of salary. The average value of notice

requirements and severance payments applicable to a worker with 1 year of tenure, a worker with 5 years and a worker with 10 years is considered. One month is recorded as 4 and 1/3 weeks.

Redundancy cost indicator (in salary weeks)	Data
Notice period for redundancy dismissal for a worker with 1 year of tenure	0.0
Notice period for redundancy dismissal for a worker with 5 years of tenure	0.0
Notice period for redundancy dismissal for a worker with 10 years of tenure	0.0
Notice period for redundancy dismissal (average for workers with 1, 5 and 10 years of tenure)	0.0
Severance pay for redundancy dismissal for a worker with 1 year of tenure	4.3
Severance pay for redundancy dismissal for a worker with 5 years of tenure	18.8
Severance pay for redundancy dismissal for a worker with 10 years of tenure	21.7
Severance pay for redundancy dismissal (average for workers with 1, 5 and 10 years of tenure)	14.9

Source: *Doing Business* database.

Social protection schemes and benefits & Labor disputes

Doing Business collects data on the existence of unemployment protection schemes as well as data on whether employers are legally required to provide health insurance for employees with permanent contracts.

Doing Business also assesses the mechanisms available to resolve labor disputes. More specifically, it collects data on what courts would be competent to hear labor disputes and whether the competent court is specialized in resolving labor disputes.

Social protection schemes and benefits & Labor disputes indicator	Data
Availability of unemployment protection scheme?	No
Health insurance existing for permanent employees?	Yes
Availability of courts or court sections specializing in labor disputes?	Yes

Source: *Doing Business* database.

DISTANCE TO FRONTIER AND EASE OF DOING BUSINESS RANKING

This year's report presents results for 2 aggregate measures: the distance to frontier score and the ease of doing business ranking, which for the first time this year is based on the distance to frontier score. The ease of doing business ranking compares economies with one another; the distance to frontier score benchmarks economies with respect to regulatory best practice, showing the absolute distance to the best performance on each *Doing Business* indicator. When compared across years, the distance to frontier score shows how much the regulatory environment for local entrepreneurs in an economy has changed over time in absolute terms, while the ease of doing business ranking can show only how much the regulatory environment has changed relative to that in other economies.

Distance to Frontier

The distance to frontier score captures the gap between an economy's performance and a measure of best practice across the entire sample of 31 indicators for 10 *Doing Business* topics (the labor market regulation indicators are excluded). For starting a business, for example, Canada and New Zealand have the smallest number of procedures required (1), and New Zealand the shortest time to fulfill them (0.5 days). Slovenia has the lowest cost (0.0), and Australia, Colombia and 110 other economies have no paid-in minimum capital requirement (table 15.1 in the *Doing Business 2015* report).

Calculation of the distance to frontier score

Calculating the distance to frontier score for each economy involves 2 main steps. First, individual component indicators are normalized to a common unit where each of the 31 component indicators y (except for the total tax rate) is rescaled using the linear transformation $(\text{worst} - y)/(\text{worst} - \text{frontier})$. In this formulation the frontier represents the best performance on the indicator across all economies since 2005 or the third year after data for the indicator were collected for the first time. For legal indicators such as those on getting credit or protecting minority investors, the frontier is set at the highest possible value. For the total tax rate, consistent with the use of a threshold in calculating the rankings on this indicator, the frontier is

defined as the total tax rate at the 15th percentile of the overall distribution for all years included in the analysis. For the time to pay taxes the frontier is defined as the lowest time recorded among all economies that levy the 3 major taxes: profit tax, labor taxes and mandatory contributions, and value added tax (VAT) or sales tax. In addition, the cost to export and cost to import for each year are divided by the GDP deflator, to take the general price level into account when benchmarking these absolute-cost indicators across economies with different inflation trends. The base year for the deflator is 2013 for all economies.

In the same formulation, to mitigate the effects of extreme outliers in the distributions of the rescaled data for most component indicators (very few economies need 700 days to complete the procedures to start a business, but many need 9 days), the worst performance is calculated after the removal of outliers. The definition of outliers is based on the distribution for each component indicator. To simplify the process, 2 rules were defined: the 95th percentile is used for the indicators with the most dispersed distributions (including time, cost, minimum capital and number of payments to pay taxes), and the 99th percentile is used for number of procedures and number of documents to trade. No outlier was removed for component indicators bound by definition or construction, including legal index scores (such as the depth of credit information index, extent of conflict of interest regulation index and strength of insolvency framework index) and the recovery rate (figure 15.1 in the *Doing Business 2015* report).

Second, for each economy the scores obtained for individual indicators are aggregated through simple averaging into one distance to frontier score, first for each topic and then across all 10 topics: starting a business, dealing with construction permits, getting electricity, registering property, getting credit, protecting minority investors, paying taxes, trading across borders, enforcing contracts and resolving insolvency. More complex aggregation methods—such as principal components and unobserved components—yield a ranking nearly identical to the simple average used by *Doing Business*⁶. Thus *Doing Business* uses the simplest

⁶ See Djankov, Manraj and others (2005). Principal components and unobserved components methods yield a ranking nearly identical to

method: weighting all topics equally and, within each topic, giving equal weight to each of the topic components⁷.

An economy's distance to frontier score is indicated on a scale from 0 to 100, where 0 represents the worst performance and 100 the frontier. All distance to frontier calculations are based on a maximum of 5 decimals. However, indicator ranking calculations and the ease of doing business ranking calculations are based on 2 decimals. The difference between an economy's distance to frontier score in any previous year and its score in 2014 illustrates the extent to which the economy has closed the gap to the regulatory frontier over time. And in any given year the score measures how far an economy is from the best performance at that time.

Treatment of the total tax rate

This year, for the first time, the total tax rate component of the paying taxes indicator set enters the distance to frontier calculation in a different way than any other indicator. The distance to frontier score obtained for the total tax rate is transformed in a nonlinear fashion before it enters the distance to frontier score for paying taxes. As a result of the nonlinear transformation, an increase in the total tax rate has a smaller impact on the distance to frontier score for the total tax rate—and therefore on the distance to frontier score for paying taxes—for economies with a below-average total tax rate than it would have in the calculation done in previous years (line B is smaller than line A in figure 15.2 of the *Doing Business 2015* report). And for economies with an extreme total tax rate (a rate that is very high relative to the average), an increase has a greater impact on both these distance to frontier scores than before (line D is bigger than line C in figure 15.2 of the *Doing Business 2015* report).

The nonlinear transformation is not based on any economic theory of an "optimal tax rate" that minimizes distortions or maximizes efficiency in an economy's

that from the simple average method because both these methods assign roughly equal weights to the topics, since the pairwise correlations among indicators do not differ much. An alternative to the simple average method is to give different weights to the topics, depending on which are considered of more or less importance in the context of a specific economy.

⁷ For getting credit, indicators are weighted proportionally, according to their contribution to the total score, with a weight of 60% assigned to the strength of legal rights index and 40% to the depth of credit information index. Indicators for all other topics are assigned equal weights

overall tax system. Instead, it is mainly empirical in nature. The nonlinear transformation along with the threshold reduces the bias in the indicator toward economies that do not need to levy significant taxes on companies like the *Doing Business* standardized case study company because they raise public revenue in other ways—for example, through taxes on foreign companies, through taxes on sectors other than manufacturing or from natural resources (all of which are outside the scope of the methodology). In addition, it acknowledges the need of economies to collect taxes from firms.

Calculation of scores for economies with 2 cities covered

For each of the 11 economies for which a second city was added in this year's report, the distance to frontier score is calculated as the population-weighted average of the distance to frontier scores for the 2 cities covered (table 12.1). This is done for the aggregate score, the scores for each topic and the scores for all the component indicators for each topic.

Table 12.1 Weights used in calculating the distance to frontier scores for economies with 2 cities covered

Economy	City	Weight (%)
Bangladesh	Dhaka	78
	Chittagong	22
Brazil	São Paulo	61
	Rio de Janeiro	39
China	Shanghai	55
	Beijing	45
India	Mumbai	47
	Delhi	53
Indonesia	Jakarta	78
	Surabaya	22
Japan	Tokyo	65
	Osaka	35
Mexico	Mexico City	83
	Monterrey	17
Nigeria	Lagos	77
	Kano	23
Pakistan	Karachi	65
	Lahore	35
Russian Federation	Moscow	70
	St. Petersburg	30
United States	New York	60
	Los Angeles	40

Source: United Nations, Department of Economic and Social Affairs, Population Division, World Urbanization Prospects, 2014 Revision. <http://esa.un.org/unpd/wup/CD-ROM/Default.aspx>.

Economies that improved the most across 3 or more *Doing Business* topics in 2013/14

Doing Business 2015 uses a simple method to calculate which economies improved the ease of doing business the most. First, it selects the economies that in 2013/14 implemented regulatory reforms making it easier to do business in 3 or more of the 10 topics included in this year's aggregate distance to frontier score. Twenty-one economies meet this criterion: Azerbaijan; Benin; the Democratic Republic of Congo; Côte d'Ivoire; the Czech Republic; Greece; India; Ireland; Kazakhstan; Lithuania; the former Yugoslav Republic of Macedonia; Poland; Senegal; the Seychelles; Spain; Switzerland; Taiwan, China; Tajikistan; Togo; Trinidad and Tobago; and the United Arab Emirates. Second, *Doing Business* sorts these economies on the increase in their distance to frontier score from the previous year using comparable data.

Selecting the economies that implemented regulatory reforms in at least 3 topics and had the biggest improvements in their distance to frontier scores is intended to highlight economies with ongoing, broad-based reform programs. The improvement in the distance to frontier score is used to identify the top improvers because this allows a focus on the absolute improvement—in contrast with the relative improvement shown by a change in rankings—that economies have made in their regulatory environment for business.

Ease of *Doing Business* ranking

The ease of doing business ranking ranges from 1 to 189. The ranking of economies is determined by sorting the aggregate distance to frontier scores, rounded to 2 decimals.

RESOURCES ON THE *DOING BUSINESS* WEBSITE

Current features

News on the *Doing Business* project
<http://www.doingbusiness.org>

Rankings

How economies rank—from 1 to 189
<http://www.doingbusiness.org/rankings>

Data

All the data for 189 economies—topic rankings, indicator values, lists of regulatory procedures and details underlying indicators
<http://www.doingbusiness.org/data>

Reports

Access to *Doing Business* reports as well as subnational and regional reports, reform case studies and customized economy and regional profiles
<http://www.doingbusiness.org/reports>

Methodology

The methodologies and research papers underlying *Doing Business*
<http://www.doingbusiness.org/methodology>

Research

Abstracts of papers on *Doing Business* topics and related policy issues
<http://www.doingbusiness.org/research>

***Doing Business* reforms**

Short summaries of DB2015 business regulation reforms, lists of reforms since DB2008 and a ranking simulation tool
<http://www.doingbusiness.org/reforms>

Historical data

Customized data sets since DB2004
<http://www.doingbusiness.org/custom-query>

Law library

Online collection of business laws and regulations relating to business
<http://www.doingbusiness.org/law-library>

Contributors

More than 10,700 specialists in 189 economies who participate in *Doing Business*
<http://www.doingbusiness.org/contributors/doing-business>

Entrepreneurship data

Data on business density (number of newly registered companies per 1,000 working-age people) for 139 economies
<http://www.doingbusiness.org/data/exploretopics/entrepreneurship>

Distance to frontier

Data benchmarking 189 economies to the frontier in regulatory practice
<http://www.doingbusiness.org/data/distance-to-frontier>

Information on good practices

Showing where the many good practices identified by *Doing Business* have been adopted
<http://www.doingbusiness.org/data/good-practice>

***Doing Business* iPhone App**

Doing Business at a Glance—presenting the full report, rankings and highlights for each topic for the iPhone, iPad and iPod touch
<http://www.doingbusiness.org/specialfeatures/iphone>



www.doingbusiness.org

ISBN 978-1-4648-0351-2



SKU 210351